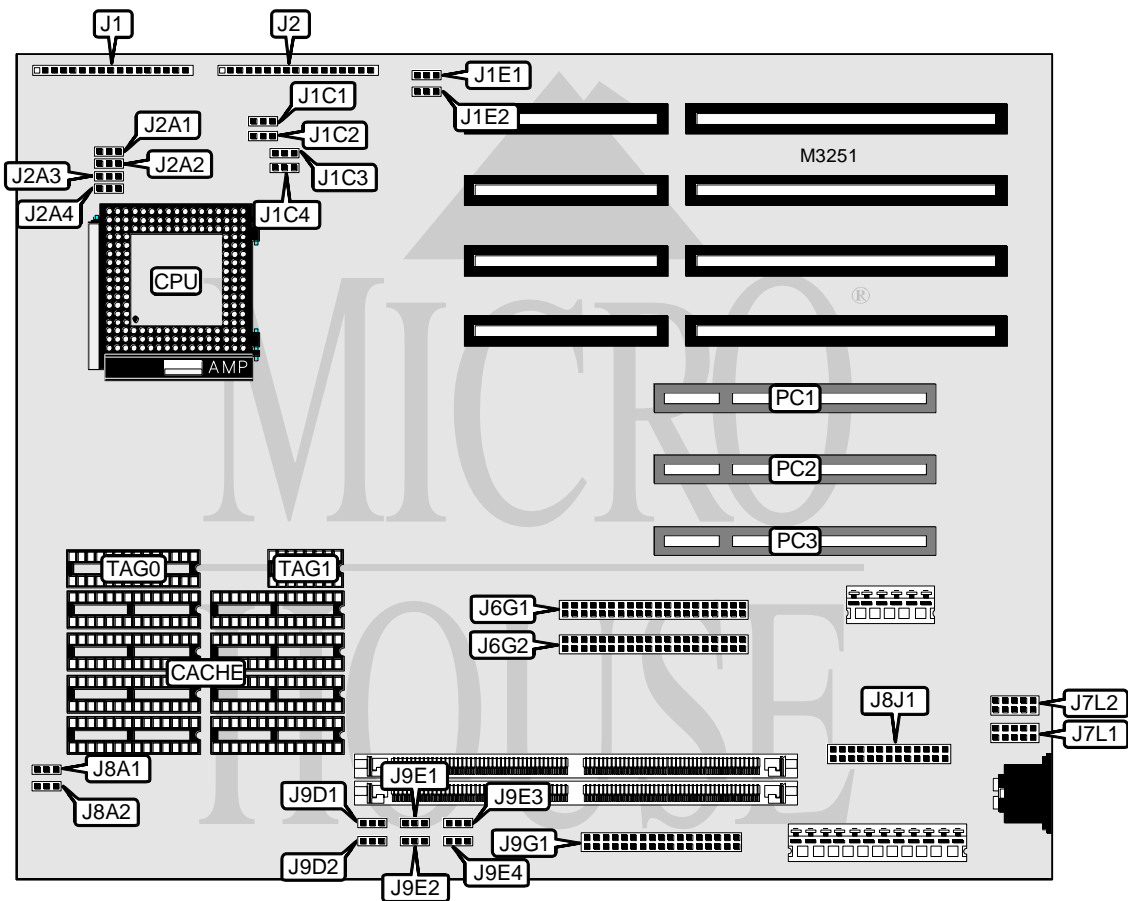


IPC CORPORATION, LTD.

IPC VALUEMAGIC (MB486PCI#10)

Processor	80486SX/80486SX2/80486DX2/80486DX4
Processor Speed	33/50(internal)/66(internal)/100(internal)MHz
Chip Set	Intel
Max. Onboard DRAM	64MB
Cache	128/256KB
BIOS	AMI
Dimensions	330mm x 218mm
I/O Options	32-bit PCI slots (3), floppy drive interface, IDE interfaces (2), parallel port, serial ports (2)
NPU Options	None



CONNECTIONS			
Purpose	Location	Purpose	Location
Reset switch	J1 pins 1 & 2	IDE interface	J6G1
Power LED & keylock	J1 pins 4 - 8	IDE interface	J6G2
IDE interface LED	J1 pins 10 - 13	Serial port 1	J7L1
Turbo LED	J1 pins 16 & 17	Serial port 2	J7L2
Chassis fan power	J2 pins 6 - 8	Parallel port	J8J1
Speaker	J2 pins 10 - 13	Floppy drive interface	J9G1
Turbo switch	J2 pins 16 & 17	32-bit PCI slots	PC1 - PC3

Continued on next page. . .

IPC CORPORATION, LTD.
IPC VALUEMAGIC (MB486PCI#10)

... continued from previous page

USER CONFIGURABLE SETTINGS		
Function	Jumper	Position
í Factory configured - do not alter	J1C1	N/A
í Password enabled	J9D1	Pins 1 & 2 closed
Password disabled	J9D1	Pins 2 & 3 closed
í Monitor type select color	J9D2	Pins 1 & 2 closed
Monitor type select monochrome	J9D2	Pins 2 & 3 closed
í CMOS memory normal operation	J9E1	Pins 1 & 2 closed
CMOS memory clear	J9E1	Pins 2 & 3 closed
í Setup access enabled	J9E2	Pins 1 & 2 closed
Setup access disabled	J9E2	Pins 2 & 3 closed
í Flash BIOS write protect enabled	J9E3	Pins 1 & 2 closed
Flash BIOS write protect disabled	J9E3	Pins 2 & 3 closed
í Normal boot enabled	J9E4	Pins 1 & 2 closed
Recovery boot enabled	J9E4	Pins 2 & 3 closed

DRAM CONFIGURATION		
Size	Bank 0	Bank 1
1MB	(1) 256K x 36	None
1MB	None	(1) 256K x 36
2MB	(1) 256K x 36	(1) 256K x 36
2MB	None	(1) 512K x 36
2MB	(1) 512K x 36	None
3MB	(1) 512K x 36	(1) 256K x 36
3MB	(1) 256K x 36	(1) 512K x 36
4MB	(1) 512K x 36	(1) 512K x 36
4MB	(1) 1M x 36	None
4MB	None	(1) 1M x 36
5MB	(1) 256K x 36	(1) 1M x 36
5MB	(1) 1M x 36	(1) 256K x 36
6MB	(1) 1M x 36	(1) 512K x 36
6MB	(1) 512K x 36	(1) 1M x 36
8MB	(1) 1M x 36	(1) 1M x 36
8MB	(1) 2M x 36	None
8MB	None	(1) 2M x 36
9MB	(1) 2M x 36	(1) 256K x 36
9MB	(1) 256K x 36	(1) 2M x 36
10MB	(1) 2M x 36	(1) 512K x 36
10MB	(1) 512K x 36	(1) 2M x 36
12MB	(1) 2M x 36	(1) 1M x 36
12MB	(1) 1M x 36	(1) 2M x 36
16MB	(1) 2M x 36	(1) 2M x 36
16MB	(1) 4M x 36	None
16MB	None	(1) 4M x 36
17MB	(1) 4M x 36	(1) 256K x 36

Continued on next page. . .

IPC CORPORATION, LTD.
IPC VALUEMAGIC (MB486PCI#10)

... continued from previous page

DRAM CONFIGURATION (CON'T)		
Size	Bank 0	Bank 1
17MB	(1) 256K x 36	(1) 4M x 36
18MB	(1) 4M x 36	(1) 512K x 36
18MB	(1) 512K x 36	(1) 4M x 36
20MB	(1) 1M x 36	(1) 4M x 36
20MB	(1) 4M x 36	(1) 1M x 36
24MB	(1) 4M x 36	(1) 2M x 36
24MB	(1) 2M x 36	(1) 4M x 36
32MB	(1) 4M x 36	(1) 4M x 36
32MB	(1) 8M x 36	None
33MB	(1) 256K x 36	(1) 8M x 36
33MB	(1) 8M x 36	(1) 256K x 36
34MB	(1) 512K x 36	(1) 8M x 36
34MB	(1) 8M x 36	(1) 512K x 36
36MB	(1) 8M x 36	(1) 1M x 36
36MB	(1) 1M x 36	(1) 8M x 36
40MB	(1) 8M x 36	(1) 2M x 36
40MB	(1) 2M x 36	(1) 8M x 36
48MB	(1) 8M x 36	(1) 4M x 36
48MB	(1) 4M x 36	(1) 8M x 36
64MB	(1) 8M x 36	(1) 8M x 36

Note: The orientation of Banks 0 & 1 are unidentified.

CACHE CONFIGURATION				
Size	Bank 0	Bank 1	TAG0	TAG1
128KB	(4) 32K x 8	None	(1) 32K x 8	(1) 16K x 1
256KB	(4) 32K x 8	(4) 32K x 8	(1) 32K x 8	(1) 16K x 1

Note: The orientation of Banks 0 & 1 are unidentified.

CACHE JUMPER CONFIGURATION		
Size	J8A1	J8A2
128KB	Pins 2 & 3 closed	Pins 2 & 3 closed
256KB	Pins 1 & 2 closed	Pins 1 & 2 closed

CPU TYPE CONFIGURATION					
Type	J1E1	J1E2	J1C2	J1C3	J1C4
80486SX-33	1 & 2	1 & 2	1 & 2	1 & 2	2 & 3
80486SX2-50	2 & 3	2 & 3	1 & 2	1 & 2	2 & 3
80486DX2-50	2 & 3	2 & 3	1 & 2	1 & 2	1 & 2
80486DX2-66	1 & 2	1 & 2	1 & 2	1 & 2	1 & 2
80486DX4-100	1 & 2	1 & 2	1 & 2	1 & 2	1 & 2

Note: Pins designated should be in the closed position.

Continued on next page. . .

IPC CORPORATION, LTD.
IPC VALUEMAGIC (MB486PCI#10)

... continued from previous page

CPU VOLTAGE CONFIGURATION				
Voltage	J2A1	J2A2	J2A3	J2A4
3.3v	Pins 1 & 2 closed	Pins 1 & 2 closed	Pins 1 & 2 closed	Pins 1 & 2 closed
í 5v	Pins 2 & 3 closed	Pins 2 & 3 closed	Pins 2 & 3 closed	Pins 2 & 3 closed

MISCELLANEOUS TECHNICAL NOTE
The location of pin 1 is unidentified.