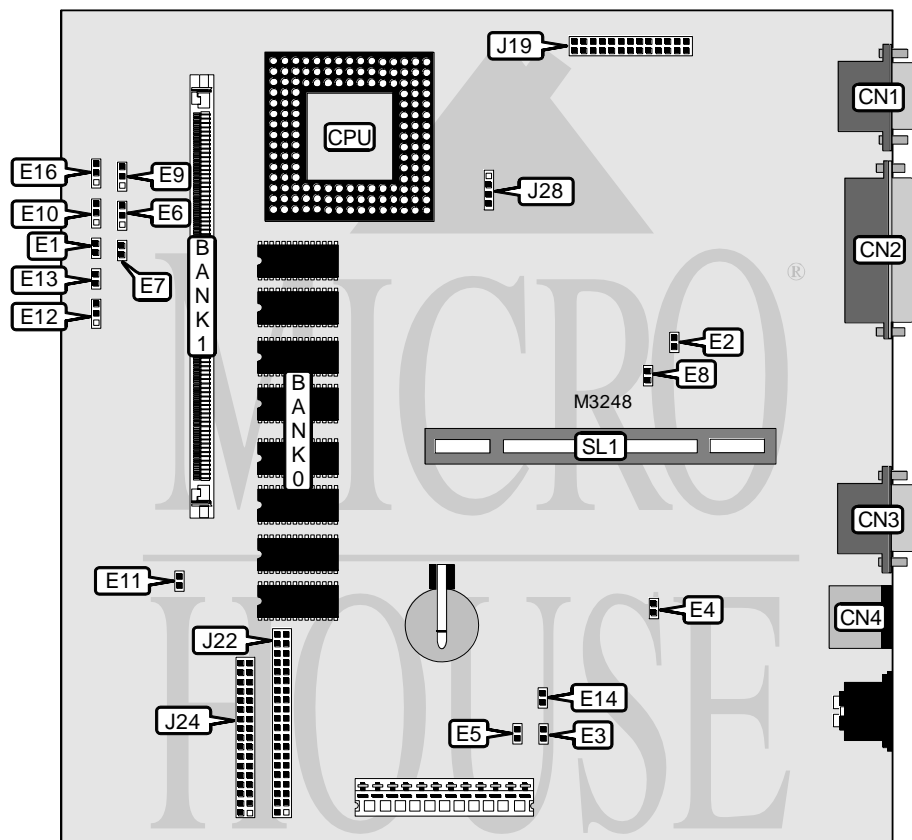


AST RESEARCH, INC.

ADVANTAGE! 610/611 486

(202716-101, 102, 202802-101)

Processor	80486SX/80487SX/ODP486/ODPR486/80486DX/CX486DX2/80486DX2/P24T/ CX5X86
Processor Speed	25/33/50(internal)/66(internal)/100(internal)MHz
Chip Set	Unidentified
Max. Onboard DRAM	20MB
Cache	None
BIOS	AST
Dimensions	220mm x 220mm
I/O Options	Floppy drive interface, IDE interface, parallel port, PS/2 mouse port, serial port, 8514 video pass through connector, VGA port, riser slot
NPU Options	None



CONNECTIONS			
Purpose	Location	Purpose	Location
VGA port	CN1	IDE interface LED	E13
Parallel port	CN2	8514 video pass through connector	J19
Serial port	CN3	IDE interface	J22
PS/2 mouse port	CN4	Floppy drive interface	J24
Reset switch	E11	Chassis fan power	J28
Power LED	E12	Riser slot	SL1

Continued on next page. . .

AST RESEARCH, INC.
 ADVANTAGE! 610/611 486
 (202716-101, 102, 202802-101)

... continued from previous page

USER CONFIGURABLE SETTINGS		
Function	Jumper	Position
í Factory configured - do not alter	E1	Open
í Factory configured - do not alter	E2	Open
í On board video enabled	E3	Closed
Auto-sense add in video	E3	Open
í Monitor type select color	E4	Open
Monitor type select monochrome	E4	Closed
í Password enabled	E5	Open
Password disabled	E5	Closed
í Factory configured - do not alter	E8	Open
í Flash BIOS normal operation	E14	Open
Flash BIOS force update at boot	E14	Closed
í Factory configured - do not alter	E16	Open

DRAM CONFIGURATION		
Size	Bank 0	Bank 1
4MB	4MB	None
5MB	4MB	(1) 256K x 32
8MB	4MB	(1) 4M x 32
20MB	4MB	(1) 4M x 32

Note: Bank 0 is factory installed and is not configurable.

CPU TYPE CONFIGURATION				
Type	E6	E7	E9	E10
80486SX	Pins 1 & 2 closed	Open	Pins 2 & 3 closed	Pins 1 & 2 closed
80478SX	Pins 1 & 2 closed	Closed	Pins 1 & 2 closed	Pins 2 & 3 closed
ODP486	Pins 1 & 2 closed	Closed	Pins 1 & 2 closed	Pins 2 & 3 closed
ODPR486	Pins 1 & 2 closed	Closed	Pins 2 & 3 closed	Pins 2 & 3 closed
80486DX	Pins 1 & 2 closed	Closed	Pins 2 & 3 closed	Pins 2 & 3 closed
80486DX2	Pins 1 & 2 closed	Closed	Pins 2 & 3 closed	Pins 2 & 3 closed
P24T	Pins 2 & 3 closed	Closed	Pins 1 & 2 closed	Pins 2 & 3 closed