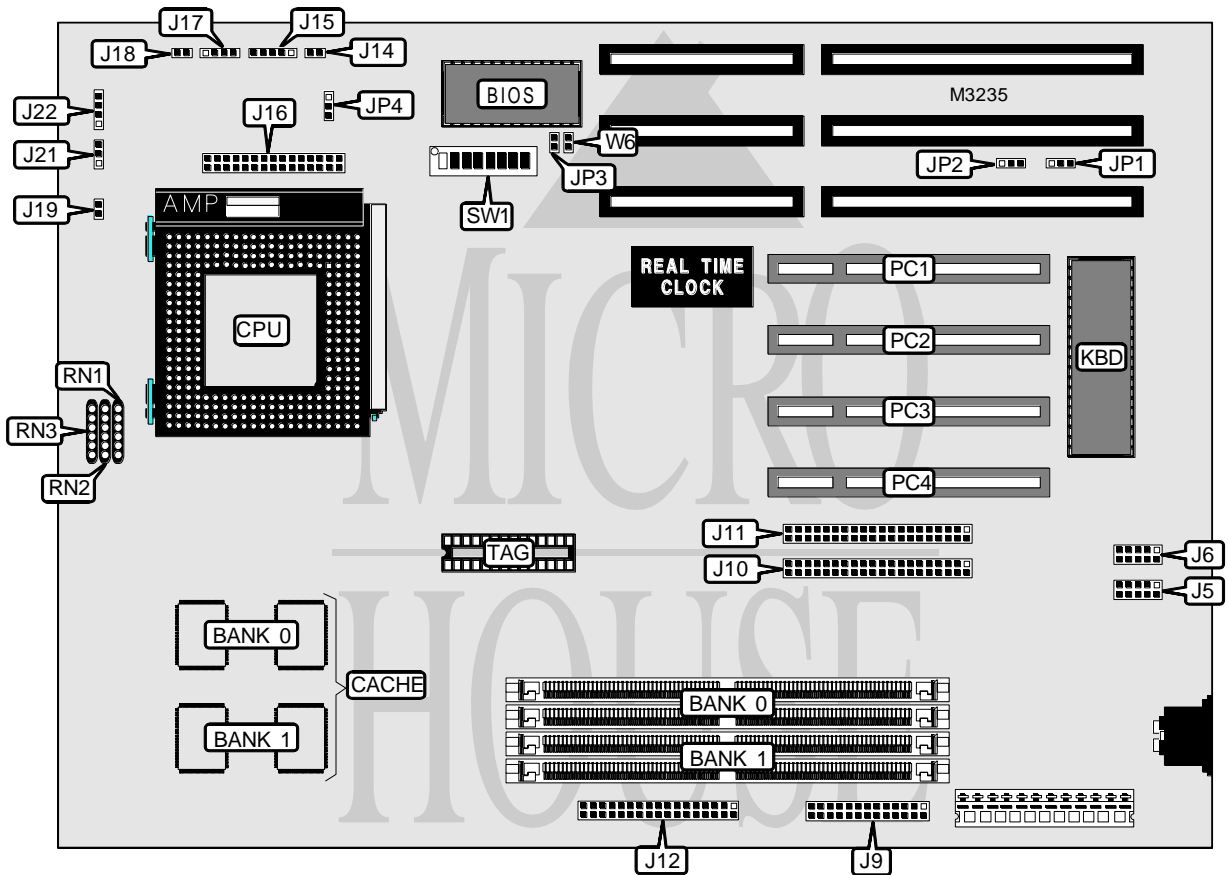


TMC RESEARCH CORPORATION PCI54ITS (VER. 2.0)

Processor	Pentium
Processor Speed	75/90/100/120/133/150/166/180/200MHz
Chip Set	Intel
Max. Onboard DRAM	128MB
Cache	256/512KB
BIOS	Unidentified
Dimensions	330mm x 218mm
I/O Options	32-bit PCI slots (4), floppy drive interface, green PC connector, IDE interfaces (2), parallel port, serial ports (2), VRM connector
NPU Options	None



CONNECTIONS			
Purpose	Location	Purpose	Location
Serial port 1	J5	VRM connector	J16
Serial port 2	J6	IDE interface LED	J17
Parallel port	J9	Turbo LED	J18
IDE interface 1	J10	Green PC connector	J19
IDE interface 2	J11	Chassis fan power	J21
Floppy drive interface	J12	Speaker	J22
Reset switch	J14	32-bit PCI slots	PC1 - PC4
Power LED & keylock	J15		

Continued on next page...

TMC RESEARCH CORPORATION

PCI54ITS (VER. 2.0)

... continued from previous page

USER CONFIGURABLE SETTINGS		
Function	Jumper/Switch	Position
Flash BIOS voltage select 12v	JP4	Pins 1 & 2 closed
Flash BIOS voltage select 5v	JP4	Pins 2 & 3 closed
í Factory configured - do not alter	RN1	N/A
í Factory configured - do not alter	RN2	N/A
í Factory configured - do not alter	RN3	N/A
Password normal operation	SW1/3	Off
Password clear	SW1/3	On
CMOS memory normal operation	SW1/4	Off
CMOS memory clear	SW1/4	On
BIOS access enabled	SW1/5	Off
BIOS access disabled	SW1/5	On
í Factory configured - do not alter	W6	N/A

DRAM CONFIGURATION		
Size	Bank 0	Bank 1
8MB	(2) 1M x 36	None
16MB	(2) 2M x 36	None
16MB	(2) 1M x 36	(2) 1M x 36
32MB	(2) 4M x 36	None
32MB	(2) 2M x 36	(2) 2M x 36
40MB	(2) 4M x 36	(2) 1M x 36
48MB	(2) 2M x 36	(2) 4M x 36
64MB	(2) 8M x 36	None
64MB	(2) 4M x 36	(2) 4M x 36
72MB	(2) 1M x 36	(2) 8M x 36
80MB	(2) 2M x 36	(2) 8M x 36
96MB	(2) 4M x 36	(2) 8M x 36
128MB	(2) 8M x 36	(2) 8M x 36

Note: Board accepts EDO memory.

CACHE CONFIGURATION			
Size	Bank 0	Bank 1	TAG
256KB	(2) 32K x 32	None	(1) 32K x 8
512KB	(2) 32K x 32	(2) 32K x 32	(1) 32K x 8

CPU SPEED CONFIGURATION					
Speed	JP3	SW1/1	SW1/6	SW1/7	SW1/8
75MHz	Open	On	Off	Off	Off
90MHz	Open	On	Off	On	Off
100MHz	Open	On	Off	On	On
120MHz	Open	On	On	On	Off
133MHz	Open	On	On	On	On
150MHz	Closed	On	On	On	Off
166MHz	Closed	On	On	On	On
180MHz	Closed	On	Off	On	Off
200MHz	Closed	On	Off	On	On

Continued on next page. . .

TMC RESEARCH CORPORATION

PCI54ITS (VER. 2.0)

... continued from previous page

CPU VOLTAGE CONFIGURATION		
Voltage	SW1/2	
Normal	On	
High	Off	

DMA CONFIGURATION		
DMA	JP1	JP2
DMA 1	Pins 1 & 2 closed	Pins 1 & 2 closed
DMA 3	Pins 2 & 3 closed	Pins 2 & 3 closed