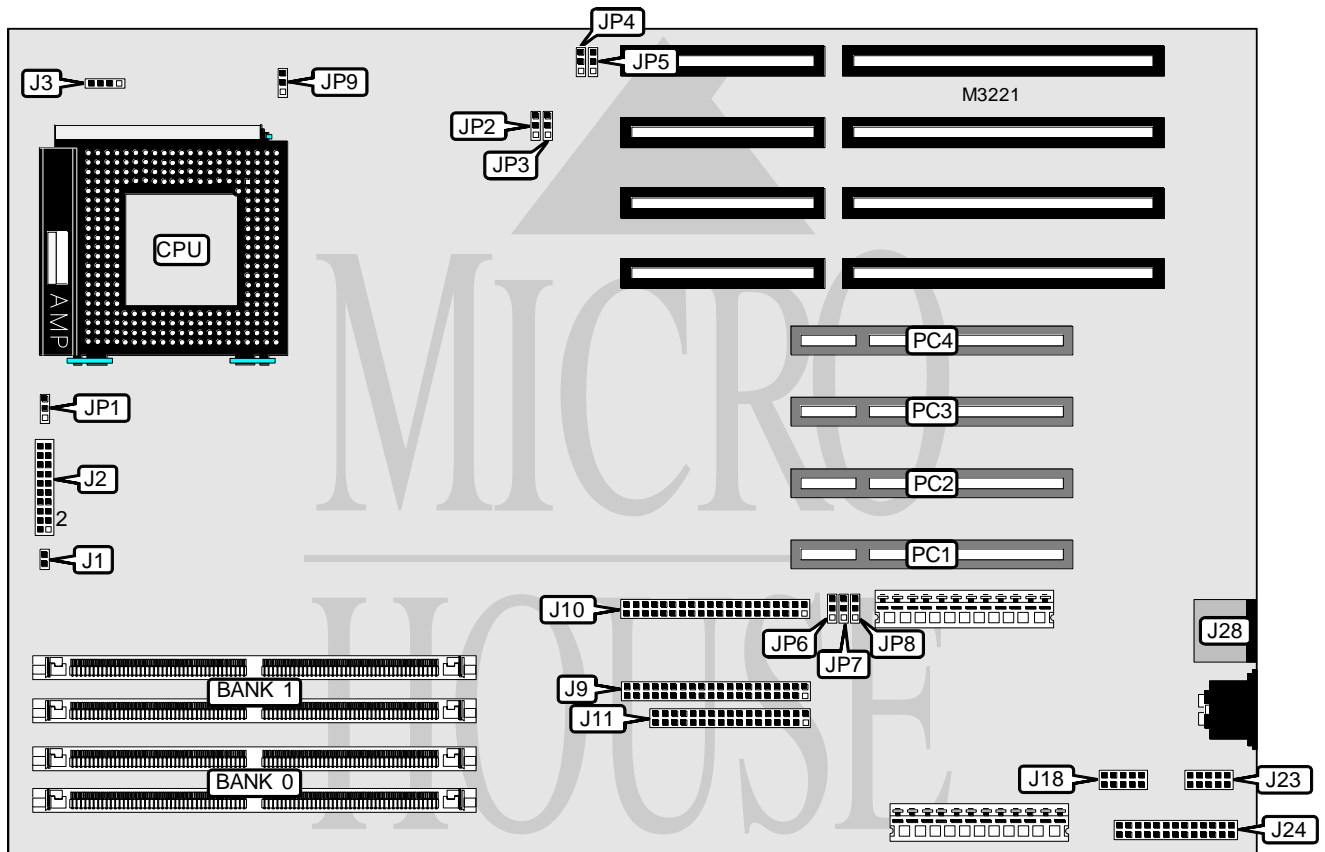


# COMPUTREND SYSTEMS, INC. PREMIO TRITON

<b>Processor</b>	Pentium
<b>Processor Speed</b>	75/90/100/120/133/150/166MHz
<b>Chip Set</b>	Intel
<b>Max. Onboard DRAM</b>	128MB
<b>Cache</b>	256KB
<b>BIOS</b>	Award
<b>Dimensions</b>	330mm x 218mm
<b>I/O Options</b>	32-bit PCI slots (4), floppy drive interface, IDE interfaces (2), parallel port, PS/2 mouse port, serial ports (2)
<b>NPU Options</b>	None



CONNECTIONS			
Purpose	Location	Purpose	Location
IDE interface LED	J1	IDE interface 1	J10
Power LED & keylock	J2 pins 1 - 5	Floppy drive interface	J11
Speaker	J2 pins 7 - 10	Serial port 1	J18
Turbo LED	J2 pins 12 & 13	Serial port 2	J23
Turbo switch	J2 pins 15 - 17	Parallel port	J24
Reset switch	J2 pins 19 & 20	PS/2 mouse port	J28
Chassis fan power	J3	32-bit PCI slots	PC1 - PC4
IDE interface 2	J9		

Continued on next page. . .

# COMPUTREND SYSTEMS, INC.

## PREMIO TRITON

... continued from previous page

USER CONFIGURABLE SETTINGS		
Function	Jumper	Position
í Password enabled	JP2	Pins 2 & 3 closed
Password disabled	JP2	Pins 1 & 2 closed
í Factory configured - do not alter	JP3	N/A
í Factory configured - do not alter	JP6	N/A
í CMOS memory normal operation	JP7	Pins 2 & 3 closed
CMOS memory clear	JP7	Pins 1 & 2 closed
í Flash BIOS normal operation	JP8	Pins 2 & 3 closed
Flash BIOS force update at boot	JP8	Pins 1 & 2 closed

DRAM CONFIGURATION		
Size	Bank 0	Bank 1
4MB	(2) 512K x 36	NONE
4MB	NONE	(2) 512K x 36
8MB	(2) 512K x 36	(2) 512K x 36
8MB	(2) 1M x 36	NONE
8MB	NONE	(2) 1M x 36
12MB	(2) 512K x 36	(2) 1M x 36
12MB	(2) 1M x 36	(2) 512K x 36
16MB	(2) 1M x 36	(2) 1M x 36
16MB	(2) 2M x 36	NONE
16MB	NONE	(2) 2M x 36
20MB	(2) 2M x 36	(2) 512K x 36
20MB	(2) 512K x 36	(2) 2M x 36
24MB	(2) 2M x 36	(2) 1M x 36
24MB	(2) 1M x 36	(2) 2M x 36
32MB	(2) 4M x 36	NONE
32MB	NONE	(2) 4M x 36
32MB	(2) 2M x 36	(2) 2M x 36
36MB	(2) 4M x 36	(2) 512K x 36
36MB	(2) 512K x 36	(2) 4M x 36
40MB	(2) 4M x 36	(2) 1M x 36
40MB	(2) 1M x 36	(2) 4M x 36
48MB	(2) 4M x 36	(2) 2M x 36
48MB	(2) 2M x 36	(2) 4M x 36
64MB	NONE	(2) 8M x 36
64MB	(2) 8M x 36	NONE
64MB	(2) 4M x 36	(2) 4M x 36
68MB	(2) 8M x 36	(2) 512K x 36
68MB	(2) 512K x 36	(2) 8M x 36
72MB	(2) 8M x 36	(2) 1M x 36
72MB	(2) 1M x 36	(2) 8M x 36

Continued on next page...

# COMPUTREND SYSTEMS, INC.

## PREMIO TRITON

... continued from previous page

DRAM CONFIGURATION (CON'T)		
Size	Bank 0	Bank 1
80MB	(2) 8M x 36	(2) 2M x 36
80MB	(2) 2M x 36	(2) 8M x 36
96MB	(2) 8M x 36	(2) 4M x 36
96MB	(2) 4M x 36	(2) 8M x 36
128MB	(2) 8M x 36	(2) 8M x 36

CACHE CONFIGURATION
256KB cache is factory installed and is not configurable. The location is unidentified.

CPU SPEED CONFIGURATION				
Speed	JP1	JP4	JP5	JP9
75MHz	Pins 2 & 3 closed	Pins 1 & 2 closed	Pins 1 & 2 closed	Pins 2 & 3 closed
90MHz	Pins 2 & 3 closed	Pins 2 & 3 closed	Pins 1 & 2 closed	Pins 2 & 3 closed
100MHz	Pins 2 & 3 closed	Pins 1 & 2 closed	Pins 2 & 3 closed	Pins 2 & 3 closed
120MHz	Pins 1 & 2 closed	Pins 2 & 3 closed	Pins 1 & 2 closed	Pins 2 & 3 closed
133MHz	Pins 1 & 2 closed	Pins 1 & 2 closed	Pins 2 & 3 closed	Pins 2 & 3 closed
150MHz	Pins 1 & 2 closed	Pins 2 & 3 closed	Pins 1 & 2 closed	Pins 1 & 2 closed
166MHz	Pins 1 & 2 closed	Pins 1 & 2 closed	Pins 2 & 3 closed	Pins 1 & 2 closed