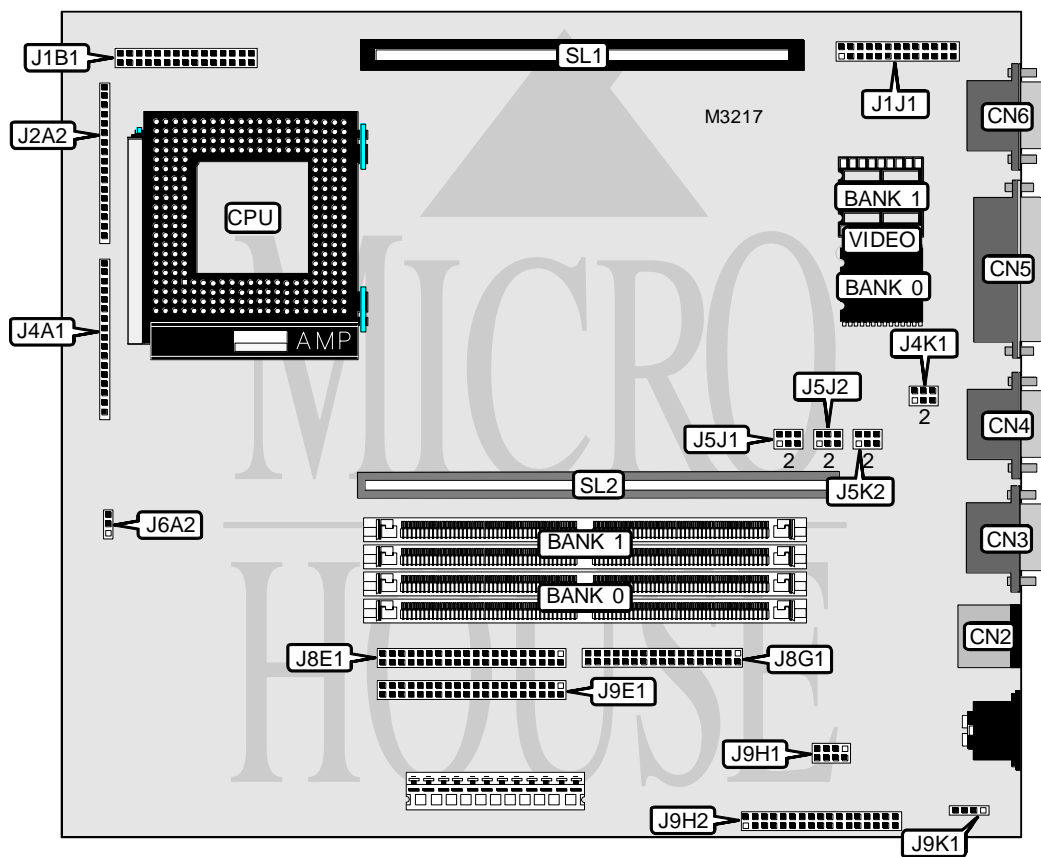


AST RESEARCH, INC. ADVANTAGE! 612 (221475-F01)

Processor	Pentium
Processor Speed	75/90/100/120/133/150/166MHz
Chip Set	Unidentified
Max. Onboard DRAM	128MB
Cache	256KB
BIOS	Unidentified
Dimensions	254mm x 218mm
I/O Options	Floppy drive interface, IDE interfaces (2), parallel port, PS/2 mouse port, serial ports (2), 8514 video pass through connector, VGA port, VRM connector, cache slot, riser slot, midi/sound port connector, wave table connector
NPU Options	None



CONNECTIONS			
Purpose	Location	Purpose	Location
PS/2 mouse port	CN2	Front panel connector	J4A1
Serial port	CN3	IDE interface 2	J8E1
Serial port	CN4	Floppy drive interface	J8G1
Parallel port	CN5	IDE interface 1	J9E1
VGA port	CN6	Wavetable connector	J9H1
VRM connector	J1B1	MIDI/sound port connector	J9H2
8514 video pass through connector	J1J1	Cache slot	SL1
Front panel connector	J2A2	Riser slot	SL2

Continued on next page. . .

AST RESEARCH, INC.

ADVANTAGE! 612 (221475-F01)

... continued from previous page

USER CONFIGURABLE SETTINGS		
Function	Jumper	Position
í Bus speed select 1/4 clock speed	J4K1	pins 2 & 3 closed
Bus speed select 1/3 clock speed	J4K1	pins 1 & 2 closed
í Setup access enabled	J4K1	pins 4 & 5 closed
Setup access disabled	J4K1	pins 5 & 6 closed
í CMOS memory normal operation	J5K2	pins 1 & 2 closed
CMOS memory clear	J5K2	pins 2 & 3 closed
í Password enabled	J5K2	pins 4 & 5 closed
Password disabled	J5K2	pins 5 & 6 closed
í Factory configured - do not alter	J9K1	N/A

DRAM CONFIGURATION		
Size	Bank 0	Bank 1
8MB	(2) 1M x 32	NONE
10MB	(2) 1M x 32	(2) 256K x 32
16MB	(2) 1M x 32	(2) 1M x 32
16MB	(2) 2M x 32	NONE
24MB	(2) 2M x 32	(2) 1M x 32
32MB	(2) 2M x 32	(2) 2M x 32
32MB	(2) 4M x 32	NONE
34MB	(2) 4M x 32	(2) 256K x 32
40MB	(2) 4M x 32	(2) 1M x 32
48MB	(2) 4M x 32	(2) 2M x 32
64MB	(2) 4M x 32	(2) 4M x 32
64MB	(2) 8M x 32	NONE
66MB	(2) 8M x 32	(2) 256K x 32
72MB	(2) 8M x 32	(2) 1M x 32
80MB	(2) 8M x 32	(2) 2M x 32
96MB	(2) 8M x 32	(2) 4M x 32
128MB	(2) 8M x 32	(2) 8M x 32

CACHE CONFIGURATION	
Size	SL1
256KB	Installed

CPU SPEED CONFIGURATION		
Speed	J5J1	J5J2
75MHz	pins 1 & 2, 4 & 5 closed	pins 1 & 2, 4 & 5 closed
90MHz	pins 1 & 2, 5 & 6 closed	pins 1 & 2, 4 & 5 closed
100MHz	pins 2 & 3, 4 & 5 closed	pins 1 & 2, 4 & 5 closed
120MHz	pins 1 & 2, 5 & 6 closed	pins 2 & 3, 4 & 5 closed
133MHz	pins 2 & 3, 4 & 5 closed	pins 2 & 3, 4 & 5 closed
150MHz	pins 1 & 2, 5 & 6 closed	pins 2 & 3, 5 & 6 closed
166MHz	pins 2 & 3, 4 & 5 closed	pins 2 & 3, 5 & 6 closed

Continued on next page. . .

AST RESEARCH, INC.
 ADVANTAGE! 612 (221475-F01)

... continued from previous page

CPU VOLTAGE CONFIGURATION	
Voltage	J6A2
3.3v	pins 1 & 2 closed
3.6v	pins 2 & 3 closed

VIDEO MEMORY CONFIGURATION		
Size	Bank 0	Bank 1
1MB	(2) 256K x 16	NONE
2MB	(2) 256K x 16	(2) 256K x 16