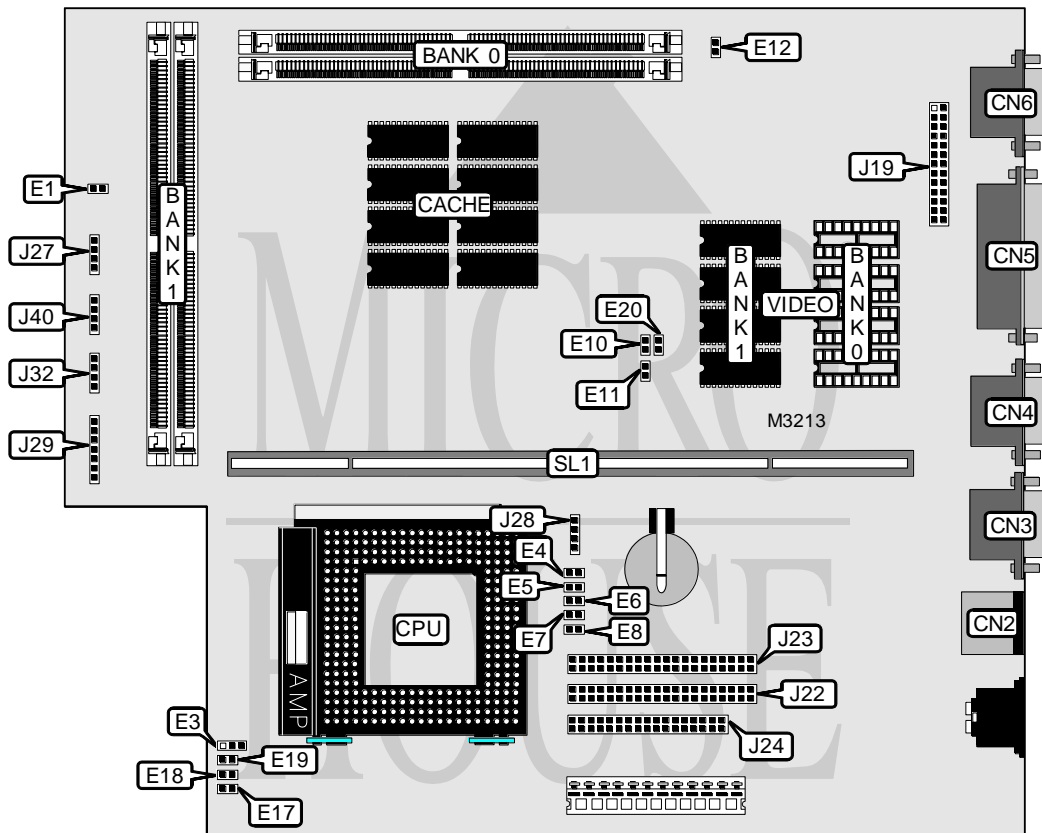


AST RESEARCH, INC.

BRAVO LC (KING P) P/100 (202762-103)

Processor	Pentium
Processor Speed	60/75/80/90/100/120/133/150/166MHz
Chip Set	Unidentified
Max. Onboard DRAM	128MB
Cache	256KB
BIOS	Unidentified
Dimensions	254mm x 218mm
I/O Options	Floppy drive interface, IDE interfaces (2), parallel port, PS/2 mouse port, serial ports (2), 8514 video pass through connector, VGA port, riser slot
NPU Options	None



CONNECTIONS			
Purpose	Location	Purpose	Location
PS/2 mouse port	CN2	Floppy drive interface	J24
Serial port	CN3	Speaker	J27
Serial port	CN4	Chassis fan power	J28
Parallel port	CN5	Control console LED	J29
VGA port	CN6	Chassis fan power	J32
8514 video pass through connector	J19	IDE interface LED	J40
IDE interface 1	J22	Riser slot	SL1
IDE interface 2	J23		

Continued on next page. . .

AST RESEARCH, INC.

BRAVO LC (KING P) P/100 (202762-103)

... continued from previous page

USER CONFIGURABLE SETTINGS		
Function	Jumper	Position
í Speaker select internal	E1	Closed
Speaker select external	E1	Open
í Flash BIOS normal operation	E4	Closed
Flash BIOS force update at boot	E4	Open
í Password enabled	E5	Closed
Password disabled	E5	Open
í Setup access enabled	E7	Closed
Setup access disabled	E7	Open
í Factory configured - do not alter	E12	Open
í Factory configured - do not alter	E13	Closed
í Factory configured - do not alter	E14	Open
í Factory configured - do not alter	E17	Open
í Factory configured - do not alter	E19	Open

Note: The location of jumpers E13, E14 are unidentified.

DRAM CONFIGURATION		
Size	Bank 0	Bank 1
8MB	(2) 1M x 32	NONE
10MB	(2) 1M x 32	(2) 256K x 32
16MB	(2) 1M x 32	(2) 1M x 32
16MB	(2) 2M x 32	NONE
24MB	(2) 2M x 32	(2) 1M x 32
32MB	(2) 2M x 32	(2) 2M x 32
32MB	(2) 4M x 32	NONE
34MB	(2) 4M x 32	(2) 256K x 32
40MB	(2) 4M x 32	(2) 1M x 32
48MB	(2) 4M x 32	(2) 2M x 32
64MB	(2) 4M x 32	(2) 4M x 32
64MB	(2) 8M x 32	NONE
66MB	(2) 8M x 32	(2) 256K x 32
72MB	(2) 8M x 32	(2) 1M x 32
80MB	(2) 8M x 32	(2) 2M x 32
96MB	(2) 8M x 32	(2) 4M x 32
128MB	(2) 8M x 32	(2) 8M x 32

CACHE CONFIGURATION
Note: 256KB cache is factory installed and is not configurable.

Continued on next page. . .

AST RESEARCH, INC.

BRAVO LC (KING P) P/100 (202762-103)

... continued from previous page

CPU SPEED CONFIGURATION				
Internal speed	External speed	E3	E6	E8
60MHz	40MHz	pins 2 & 3 closed	Closed	Closed
75MHz	50MHz	pins 2 & 3 closed	Closed	Closed
80MHz	40MHz	pins 1 & 2 closed	Open	Closed
90MHz	60MHz	pins 2 & 3 closed	Closed	Closed
100MHz	50MHz	pins 1 & 2 closed	Open	Closed
100MHz	66MHz	pins 2 & 3 closed	Closed	Closed
120MHz	60MHz	pins 1 & 2 closed	Open	Closed
133MHz	66MHz	pins 1 & 2 closed	Open	Closed
150MHz	60MHz	pins 1 & 2 closed	Closed	Open
166MHz	66MHz	pins 1 & 2 closed	Closed	Open

CPU SPEED CONFIGURATION (CON'T)					
Internal speed	External speed	E10	E11	E18	E20
60MHz	40MHz	Open	Closed	Open	Open
75MHz	50MHz	Open	Open	Open	Closed
80MHz	40MHz	Open	Closed	Open	Open
90MHz	60MHz	Closed	Open	Open	Closed
100MHz	50MHz	Open	Open	Open	Closed
100MHz	66MHz	Closed	Closed	Open	Closed
120MHz	60MHz	Closed	Open	Open	Closed
133MHz	66MHz	Closed	Closed	Open	Closed
150MHz	60MHz	Closed	Open	Closed	Closed
166MHz	66MHz	Closed	Closed	Closed	Closed

CPU VOLTAGE CONFIGURATION	
Voltage	E2
3.3v - 3.4v	Closed
3.4v - 3.6v	Open

Note: This jumper may not be present on all boards. The location is unidentified.

VIDEO MEMORY CONFIGURATION		
Size	Bank 0	Bank 1
1MB	(4) 256K x 8	NONE
2MB	(4) 256K x 8	(4) 256K x 8

SPEAKER CONFIGURATION		
Setting	E15	E16
í Output to speaker	pins 1 & 2 closed	pins 1 & 2 closed
Output to line	pins 2 & 3 closed	pins 2 & 3 closed

Note: The location of the above jumpers is unidentified.