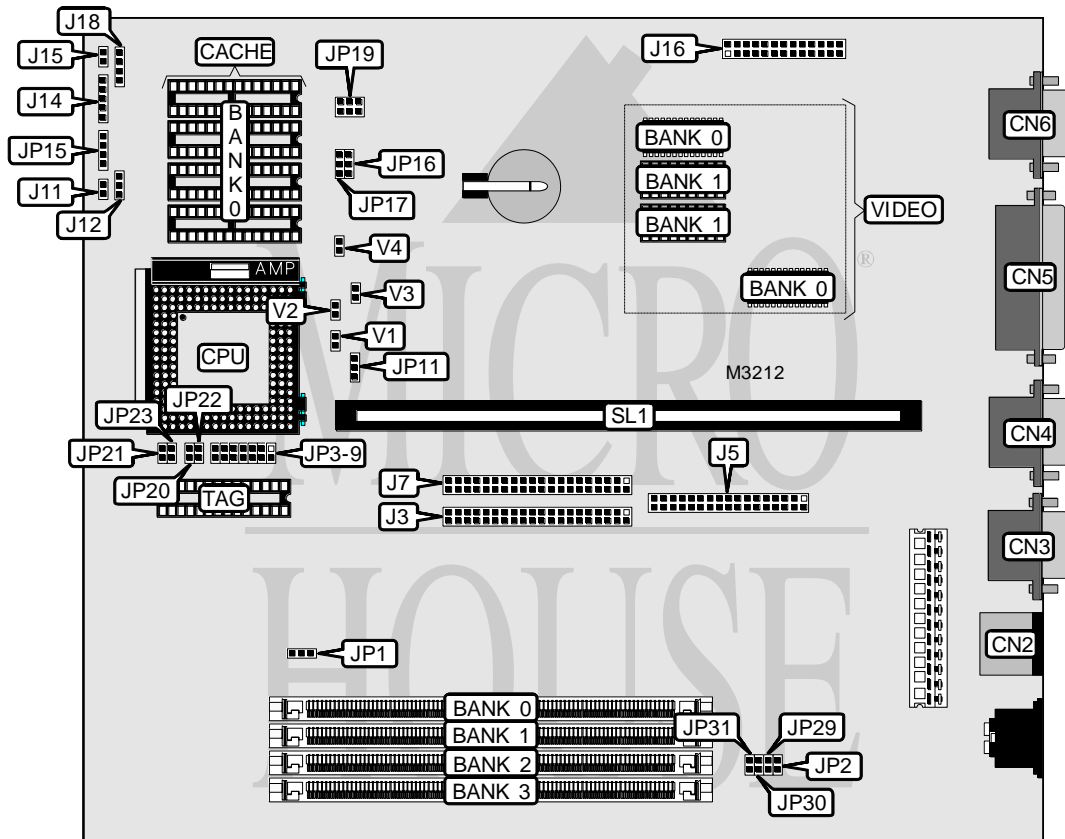


AST RESEARCH, INC. BRAVO LC (KING P) P/75 (202766-101)

Processor	CX487SX/80486SX/CX486DX/80486DX/CX486DX2/80486DX2/80486DX4/ Pentium Overdrive/CX5X86
Processor Speed	20/25/33/50(internal)/66(internal)/75(internal)/100(internal)MHz
Chip Set	Unidentified
Max. Onboard DRAM	128MB
Cache	128/256KB
BIOS	Unidentified
Dimensions	254mm x 218mm
I/O Options	Floppy drive interface, green PC connector, IDE interfaces (2), parallel port, PS/2 mouse port, serial ports (2), 8514 video pass through connector, VGA port, riser slot
NPU Options	None



Continued on next page. . .

AST RESEARCH, INC.

BRAVO LC (KING P) P/75 (202766-101)

... continued from previous page

CONNECTIONS			
Purpose	Location	Purpose	Location
PS/2 mouse port	CN2	Turbo LED (not used)	J10
Serial port	CN3	Turbo switch (not used)	J12 pins 2 & 3
Serial port	CN4	Control console power LED	J14
Parallel port	CN5	Reset switch (not used)	J15
VGA port	CN6	8514 video pass through connector	J16
IDE interface 1	J3	Speaker	J18 pins 1 & 2
Floppy drive interface	J5	Control console hard drive LED	JP15
IDE interface 2	J7	Riser slot	SL1
Green PC connector (not used)	J9		

Note: The locations of J9 & J10 are unidentified.

USER CONFIGURABLE SETTINGS		
Function	Jumper	Position
í Factory configured - do not alter	J11	N/A
í Password enabled	JP2	Closed
Password disabled	JP2	Open
í On board video enabled	JP29	Closed
On board video disabled	JP29	Open
í Monitor type select color	JP30	Closed
Monitor type select monochrome	JP30	Open
í Flash BIOS normal operation	JP31	Closed
Flash BIOS force update at boot	JP31	Open

DRAM CONFIGURATION				
Size	Bank 0	Bank 1	Bank 2	Bank 3
4MB	(1) 1M x 32	NONE	NONE	NONE
8MB	(1) 2M x 32	NONE	NONE	NONE
8MB	(1) 1M x 32	(1) 1M x 32	NONE	NONE
9MB	(1) 1M x 32	(1) 1M x 32	(1) 256K x 32	NONE
10MB	(1) 1M x 32	(1) 1M x 32	(1) 256K x 32	(1) 256K x 32
12MB	(1) 1M x 32	(1) 1M x 32	(1) 1M x 32	NONE
16MB	(1) 1M x 32	(1) 1M x 32	(1) 1M x 32	(1) 1M x 32
16MB	(1) 4M x 32	NONE	NONE	NONE
17MB	(1) 2M x 32	(1) 2M x 32	(1) 256K x 32	NONE
18MB	(1) 2M x 32	(1) 2M x 32	(1) 256K x 32	(1) 256K x 32
20MB	(1) 2M x 32	(1) 2M x 32	(1) 1M x 32	NONE
24MB	(1) 2M x 32	(1) 2M x 32	(1) 1M x 32	(1) 1M x 32
24MB	(1) 2M x 32	(1) 2M x 32	(1) 2M x 32	NONE
32MB	(1) 2M x 32	(1) 2M x 32	(1) 2M x 32	(1) 2M x 32
32MB	(1) 8M x 32	NONE	NONE	NONE
32MB	(1) 4M x 32	(1) 4M x 32	NONE	NONE
33MB	(1) 4M x 32	(1) 4M x 32	(1) 256K x 32	NONE
34MB	(1) 4M x 32	(1) 4M x 32	(1) 256K x 32	(1) 256K x 32

Continued on next page...

AST RESEARCH, INC.

BRAVO LC (KING P) P/75 (202766-101)

... continued from previous page

DRAM CONFIGURATION (CON'T)				
Size	Bank 0	Bank 1	Bank 2	Bank 3
36MB	(1) 4M x 32	(1) 4M x 32	(1) 1M x 32	NONE
40MB	(1) 4M x 32	(1) 4M x 32	(1) 1M x 32	(1) 1M x 32
40MB	(1) 4M x 32	(1) 4M x 32	(1) 2M x 32	NONE
48MB	(1) 4M x 32	(1) 4M x 32	(1) 2M x 32	(1) 2M x 32
48MB	(1) 4M x 32	(1) 4M x 32	(1) 4M x 32	NONE
64MB	(1) 4M x 32	(1) 4M x 32	(1) 4M x 32	(1) 4M x 32
64MB	(1) 8M x 32	(1) 8M x 32	NONE	NONE
66MB	(1) 8M x 32	(1) 8M x 32	(1) 256K x 32	(1) 256K x 32
68MB	(1) 8M x 32	(1) 8M x 32	(1) 1M x 32	NONE
72MB	(1) 8M x 32	(1) 8M x 32	(1) 1M x 32	(1) 1M x 32
72MB	(1) 8M x 32	(1) 8M x 32	(1) 2M x 32	NONE
80MB	(1) 8M x 32	(1) 8M x 32	(1) 2M x 32	(1) 2M x 32
80MB	(1) 8M x 32	(1) 8M x 32	(1) 4M x 32	NONE
96MB	(1) 8M x 32	(1) 8M x 32	(1) 4M x 32	(1) 4M x 32
96MB	(1) 8M x 32	(1) 8M x 32	(1) 8M x 32	NONE
128MB	(1) 8M x 32	(1) 8M x 32	(1) 8M x 32	(1) 8M x 32

CACHE CONFIGURATION		
Size	Bank 0	TAG
128KB	(4) 32K x 8	(1) 8K x 8
256KB	(4) 64K x 8	(1) 32K x 8

CACHE JUMPER CONFIGURATION		
Size	JP16	JP17
128KB	pins 1 & 2 closed	pins 1 & 2 closed
256KB	pins 2 & 3 closed	pins 1 & 2 closed

CPU TYPE CONFIGURATION					
Type	JP3	JP4	JP5	JP6	JP7
Cyrix 486	Closed	Open	Open	Open	Open
Intel 486	Open	Closed	Closed	Closed	Open
Cyrix 5x86	Open	Closed	Closed	Closed	Open

CPU TYPE CONFIGURATION (CON'T)						
Type	JP8	JP9	JP20	JP21	JP22	JP23
Cyrix 486	Open	Closed	Closed	Open	Closed	Open
Intel 486	Closed	Open	Open	Open	Open	Open
Cyrix 5x86	Closed	Open	Open	Open	Open	Open

CPU TYPE CONFIGURATION	
Type	JP11
SX	pins 2 & 3 closed
DX	pins 1 & 2 closed

Continued on next page. . .

AST RESEARCH, INC.
BRAVO LC (KING P) P/75 (202766-101)

... continued from previous page

CPU SPEED CONFIGURATION		
Speed	JP1	JP19
20MHz	pins 1 & 2 closed	pins 1 & 2 closed
25MHz	pins 1 & 2 closed	pins 3 & 4 closed
33MHz	pins 1 & 2 closed	pins 5 & 6 closed
50iMHz	pins 1 & 2 closed	pins 3 & 4 closed
66iMHz	pins 1 & 2 closed	pins 5 & 6 closed
75iMHz	pins 1 & 2 closed	pins 3 & 4 closed
100iMHz	pins 1 & 2 closed	pins 5 & 6 closed

CPU VOLTAGE CONFIGURATION				
Voltage	V1	V2	V3	V4
3.45v	Open	Open	Open	Open
5v	Closed	Closed	Closed	Closed

VIDEO MEMORY CONFIGURATION		
Size	Bank 0	Bank 1
1MB	(2) 512K x 8	NONE
2MB	(2) 512K x 8	(2) 512K x 8

MISCELLANEOUS TECHNICAL NOTE
Note: The location of pin 1 on the jumpers is unidentified.