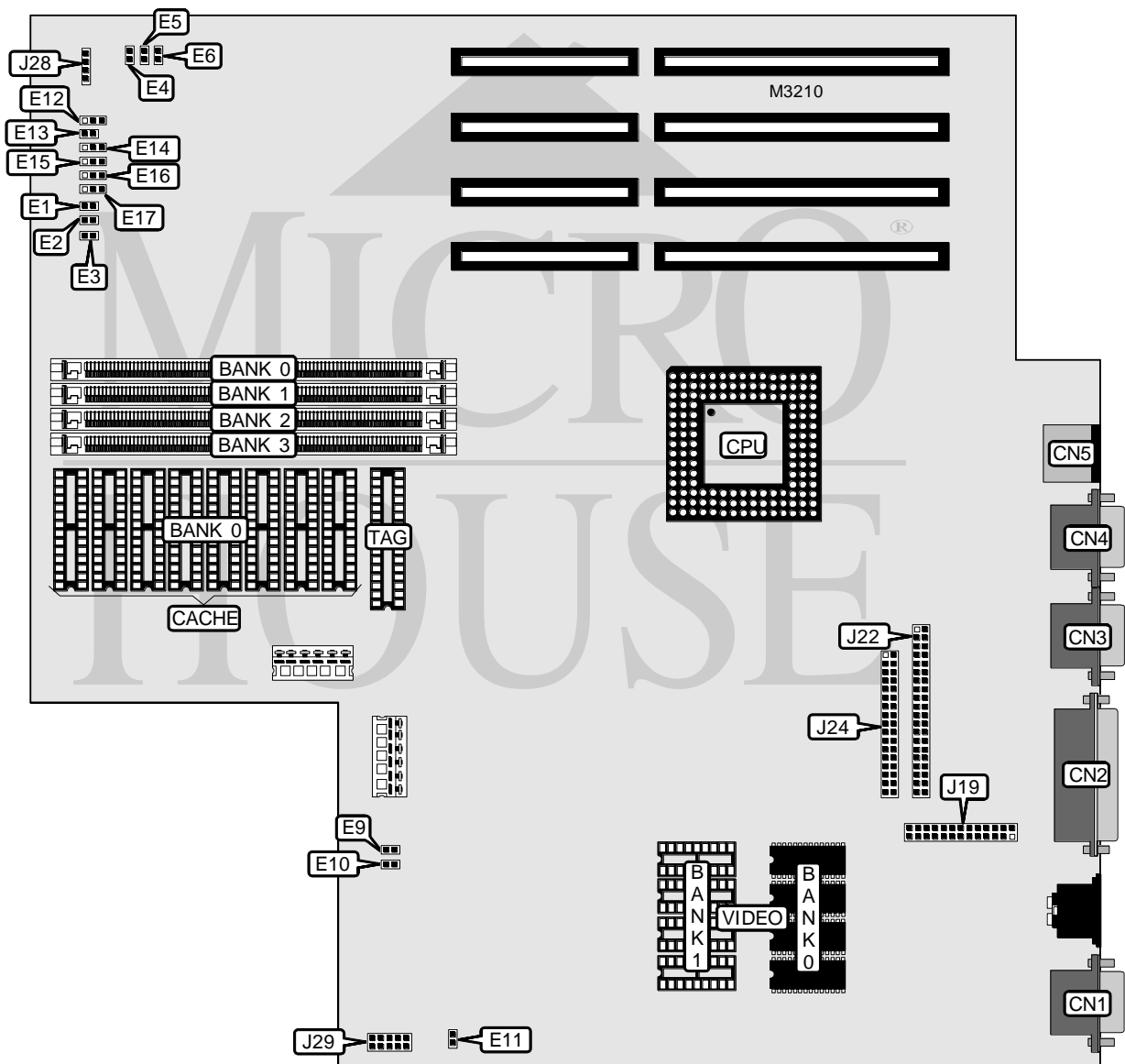


## AST RESEARCH, INC.

## ADVANTAGE! PRO 486 (202560-000, 102)

<b>Processor</b>	80486SX/80487SX/ODP486SX/80486DX/80486DX2/Pentium Overdrive
<b>Processor Speed</b>	25/33/50(internal)/66(internal)MHz
<b>Chip Set</b>	Unidentified
<b>Max. Onboard DRAM</b>	64MB
<b>Cache</b>	64/256KB
<b>BIOS</b>	Unidentified
<b>Dimensions</b>	355mm x 305mm
<b>I/O Options</b>	Floppy drive interface, IDE interface, parallel port, PS/2 mouse port, serial ports (2), 8514 video pass through connector, VGA port
<b>NPU Options</b>	None



Continued on next page. . .

# AST RESEARCH, INC.

## ADVANTAGE! PRO 486 (202560-000, 102)

... continued from previous page

CONNECTIONS			
Purpose	Location	Purpose	Location
VGA port	CN1	IDE interface	J22
Parallel port	CN2	Floppy drive interface	J24
Serial port	CN3	Speaker	J27
Serial port	CN4	Chassis fan power	J28
PS/2 mouse port	CN5	Front panel connector	J29
8514 video pass through connector	J19		
Note: The location of J27 is unidentified.			

USER CONFIGURABLE SETTINGS		
Function	Jumper	Position
í Monitor type select color	E4	Closed
Monitor type select monochrome	E4	Open
í On board video enabled	E5	Closed
On board video disabled	E5	Open
í Password enabled	E6	Open
Password disabled	E6	Closed
í Parallel port IRQ select IRQ7	E12	pins 1 & 2 closed
Parallel port IRQ select IRQ5	E12	pins 2 & 3 closed

DRAM CONFIGURATION				
Size	Bank 0	Bank 1	Bank 2	Bank 3
1MB	(1) 256K x 32	NONE	NONE	NONE
2MB	(1) 256K x 32	(1) 256K x 32	NONE	NONE
3MB	(1) 256K x 32	(1) 256K x 32	(1) 256K x 32	NONE
4MB	(1) 1M x 32	NONE	NONE	NONE
4MB	(1) 256K x 32	(1) 256K x 32	(1) 256K x 32	(1) 256K x 32
5MB	(1) 1M x 32	(1) 256K x 32	NONE	NONE
6MB	(1) 1M x 32	(1) 256K x 32	(1) 256K x 32	NONE
7MB	(1) 1M x 32	(1) 256K x 32	(1) 256K x 32	(1) 256K x 32
8MB	(1) 1M x 32	(1) 1M x 32	NONE	NONE
9MB	(1) 1M x 32	(1) 1M x 32	(1) 256K x 32	NONE
10MB	(1) 1M x 32	(1) 1M x 32	(1) 256K x 32	(1) 256K x 32
12MB	(1) 1M x 32	(1) 1M x 32	(1) 1M x 32	NONE
13MB	(1) 1M x 32	(1) 1M x 32	(1) 1M x 32	(1) 256K x 32
16MB	(1) 4M x 32	NONE	NONE	NONE
16MB	(1) 1M x 32	(1) 1M x 32	(1) 1M x 32	(1) 1M x 32
17MB	(1) 4M x 32	(1) 256K x 32	NONE	NONE
18MB	(1) 4M x 32	(1) 256K x 32	(1) 256K x 32	NONE
19MB	(1) 4M x 32	(1) 256K x 32	(1) 256K x 32	(1) 256K x 32
20MB	(1) 4M x 32	(1) 1M x 32	NONE	NONE
21MB	(1) 4M x 32	(1) 1M x 32	(1) 256K x 32	NONE

Continued on next page. . .

AST RESEARCH, INC.

ADVANTAGE! PRO 486 (202560-000, 102)

... continued from previous page

DRAM CONFIGURATION (CON'T)				
Size	Bank 0	Bank 1	Bank 2	Bank 3
22MB	(1) 4M x 32	(1) 1M x 32	(1) 256K x 32	(1) 256K x 32
24MB	(1) 4M x 32	(1) 1M x 32	(1) 1M x 32	NONE
25MB	(1) 4M x 32	(1) 1M x 32	(1) 1M x 32	(1) 256K x 32
28MB	(1) 4M x 32	(1) 1M x 32	(1) 1M x 32	(1) 1M x 32
32MB	(1) 4M x 32	(1) 4M x 32	NONE	NONE
33MB	(1) 4M x 32	(1) 4M x 32	(1) 256K x 32	NONE
34MB	(1) 4M x 32	(1) 4M x 32	(1) 256K x 32	(1) 256K x 32
36MB	(1) 4M x 32	(1) 4M x 32	(1) 1M x 32	NONE
37MB	(1) 4M x 32	(1) 4M x 32	(1) 1M x 32	(1) 256K x 32
40MB	(1) 4M x 32	(1) 4M x 32	(1) 1M x 32	(1) 1M x 32
48MB	(1) 4M x 32	(1) 4M x 32	(1) 4M x 32	NONE
49MB	(1) 4M x 32	(1) 4M x 32	(1) 4M x 32	(1) 256K x 32
52MB	(1) 4M x 32	(1) 4M x 32	(1) 4M x 32	(1) 1M x 32
64MB	(1) 4M x 32	(1) 4M x 32	(1) 4M x 32	(1) 4M x 32

CACHE CONFIGURATION		
Size	Bank 0	TAG
64KB	(8) 8K x 8	(1) 8K x 9
256KB	(8) 32K x 8	(1) 32K x 9

CACHE JUMPER CONFIGURATION			
Size	E1	E2	E3
None	Open	Open	Open
64KB	Open	Open	Open
256KB	Closed	Closed	Closed

CPU TYPE CONFIGURATION						
Type	E11	E13	E14	E15	E16	E17
80486SX(PQFP)	Open	Open	1 & 2	1 & 2	1 & 2	1 & 2
80486SX(PGA)	Closed	Open	1 & 2	1 & 2	1 & 2	1 & 2
80487SX	Closed	Closed	1 & 2	1 & 2	2 & 3	1 & 2
ODP486SX	Closed	Closed	1 & 2	1 & 2	2 & 3	1 & 2
80486DX	Closed	Closed	2 & 3	1 & 2	2 & 3	1 & 2
80486DX2	Closed	Closed	2 & 3	1 & 2	2 & 3	1 & 2
P24T	Closed	Closed	2 & 3	2 & 3	2 & 3	Open

Note: Pins designated should be in the closed position. The location of the PQFP is unidentified.

CPU SPEED CONFIGURATION		
Speed	E9	E10
25MHz	Closed	Closed
33MHz	Open	Closed
50iMHz	Closed	Closed
66iMHz	Open	Closed

Continued on next page...

---

AST RESEARCH, INC.  
ADVANTAGE! PRO 486 (202560-000, 102)

... continued from previous page

VIDEO MEMORY CONFIGURATION		
Size	Bank 0	Bank 1
512KB	(4) 256K x 4	NONE
1MB	(4) 256K x 4	(4) 256K x 4