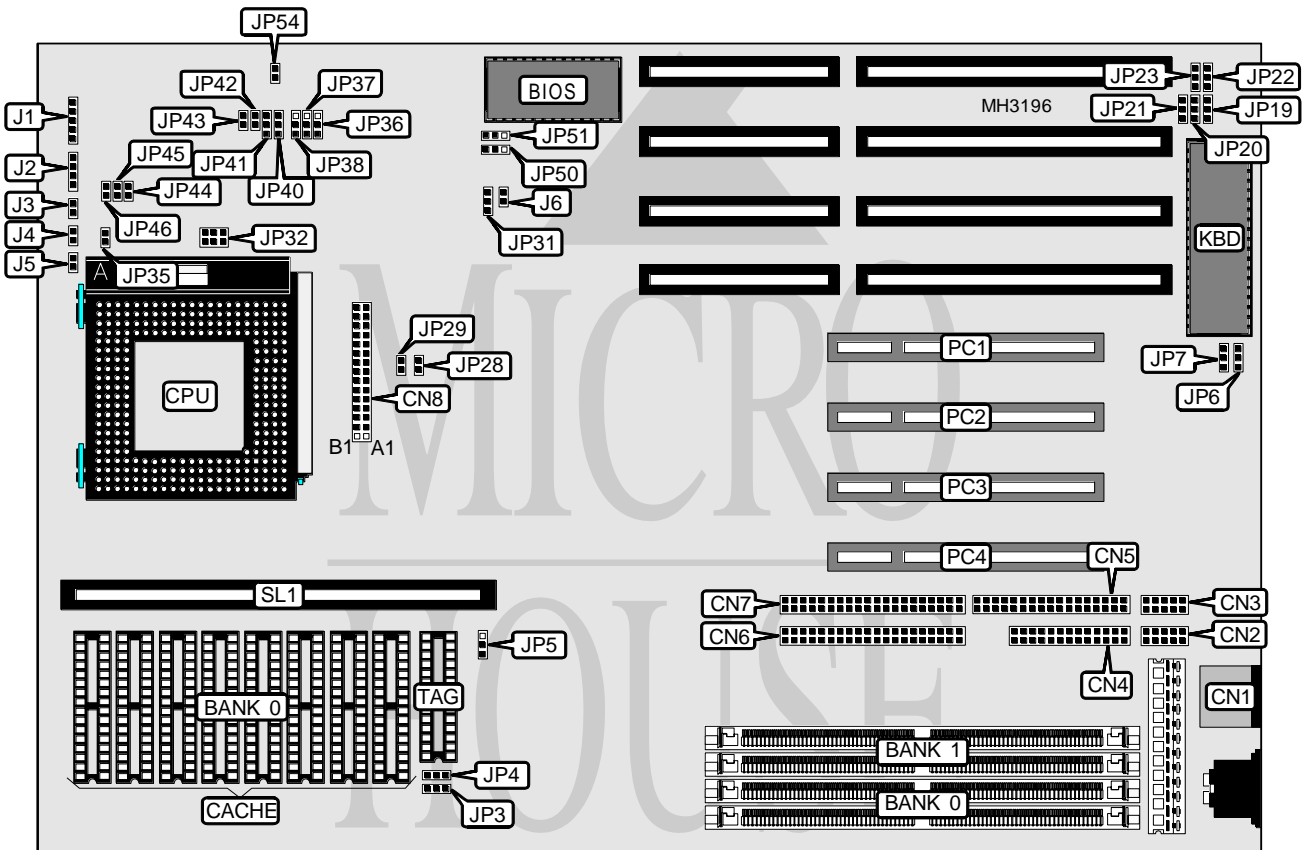


# M TECHNOLOGY, INC. R525 PENTIUM PCI

<b>Processor</b>	Pentium
<b>Processor Speed</b>	75/90/100/120/133/150MHz
<b>Chip Set</b>	Intel
<b>Max. Onboard DRAM</b>	128MB
<b>Cache</b>	256/512KB
<b>BIOS</b>	Award
<b>Dimensions</b>	330mm x 218mm
<b>I/O Options</b>	32-bit PCI slots (4), floppy drive interface, green PC connector, IDE interfaces (2), parallel port, PS/2 mouse port, serial ports (2), VRM connector, cache slot
<b>NPU Options</b>	None



CONNECTIONS			
Purpose	Location	Purpose	Location
PS/2 mouse port	CN1	Speaker	J2
Serial port 1	CN2	Turbo switch	J3
Serial port 2	CN3	Turbo LED	J4
Parallel port	CN4	Reset switch	J5
Floppy drive interface	CN5	Green PC connector	J6
IDE interface 1	CN6	IDE interface LED	JP35
IDE interface 2	CN7	32-bit PCI slots	PC1 - PC4
VRM connector	CN8	Cache slot	SL1
Power LED & keylock	J1		

Continued on next page. . .

# M TECHNOLOGY, INC.

## R525 PENTIUM PCI

... continued from previous page

USER CONFIGURABLE SETTINGS		
Function	Jumper	Position
í Factory configured - do not alter	JP8	N/A
í Factory configured - do not alter	JP9	N/A
í Factory configured - do not alter	JP10	N/A
í Factory configured - do not alter	JP11	N/A
Pipeline disabled	JP42	Open
Pipeline enabled	JP42	Closed
í Cache type select write back	JP43	Open
Cache type select write through	JP43	Closed
í Factory configured - do not alter	JP48	N/A
í Factory configured - do not alter	JP49	N/A
í CMOS memory normal operation	JP54	Open
CMOS memory clear	JP54	Closed

Note: The location of the factory configured jumpers are unidentified.

DRAM CONFIGURATION		
Size	Bank 0	Bank 1
8MB	(2) 1M x 36	NONE
8MB	(2) 512K x 36	(2) 512K x 36
10MB	(2) 1M x 36	(2) 256K x 36
10MB	(2) 256K x 36	(2) 1M x 36
12MB	(2) 1M x 36	(2) 512K x 36
12MB	(2) 512K x 36	(2) 1M x 36
16MB	(2) 2M x 36	NONE
16MB	(2) 1M x 36	(2) 1M x 36
18MB	(2) 2M x 36	(2) 256K x 36
18MB	(2) 256K x 36	(2) 2M x 36
20MB	(2) 2M x 36	(2) 512K x 36
20MB	(2) 512K x 36	(2) 2M x 36
24MB	(2) 2M x 36	(2) 1M x 36
24MB	(2) 1M x 36	(2) 2M x 36
32MB	(2) 4M x 36	NONE
32MB	(2) 2M x 36	(2) 2M x 36
34MB	(2) 4M x 36	(2) 256K x 36
34MB	(2) 256K x 36	(2) 4M x 36
36MB	(2) 4M x 36	(2) 512K x 36
36MB	(2) 512K x 36	(2) 4M x 36
40MB	(2) 4M x 36	(2) 1M x 36
40MB	(2) 1M x 36	(2) 4M x 36
48MB	(2) 4M x 36	(2) 2M x 36
48MB	(2) 2M x 36	(2) 4M x 36
64MB	(2) 8M x 36	NONE
64MB	(2) 4M x 36	(2) 4M x 36
66MB	(2) 8M x 36	(2) 256K x 36

Continued on next page...

# M TECHNOLOGY, INC.

## R525 PENTIUM PCI

... continued from previous page

DRAM CONFIGURATION (CON'T)		
Size	Bank 0	Bank 1
66MB	(2) 256K x 36	(2) 8M x 36
68MB	(2) 8M x 36	(2) 512K x 36
68MB	(2) 512K x 36	(2) 8M x 36
72MB	(2) 8M x 36	(2) 1M x 36
72MB	(2) 1M x 36	(2) 8M x 36
80MB	(2) 8M x 36	(2) 2M x 36
80MB	(2) 2M x 36	(2) 8M x 36
96MB	(2) 8M x 36	(2) 4M x 36
96MB	(2) 4M x 36	(2) 8M x 36
128MB	(2) 8M x 36	(2) 8M x 36

CACHE CONFIGURATION			
Size	Bank 0	TAG	SL1
256KB (A)	(8) 32K x 8	(1) 8K/16K/32K x 8	Not installed
256KB (B)	NONE	NONE	Installed
512KB (A)	(8) 64K x 8	(1) 16K/32K x 8	Not installed
512KB (B)	NONE	NONE	Installed

CACHE JUMPER CONFIGURATION			
Size	JP5	JP36	JP37
256KB	pins 2 & 3 closed	pins 2 & 3 closed	pins 1 & 2 closed
512KB	pins 1 & 2 closed	pins 1 & 2 closed	pins 2 & 3 closed

Note: These settings are only valid if standard cache is installed.

CACHE CONFIGURATION	
Type	JP38
Standard cache	pins 1 & 2 closed
Pipeline burst cache	pins 2 & 3 closed

CACHE VOLTAGE CONFIGURATION		
Voltage	JP3	JP4
Mixed voltage	pins 1 & 2 closed	pins 1 & 2 closed
3.3v	pins 2 & 3 closed	pins 2 & 3 closed

CPU TYPE CONFIGURATION		
Type	CN8	JP32
P54CX	pins A6 & A7, B6 & B7 closed	Open
P55C 2.5v	Open	pins 1 & 2, 3 & 4, 5 & 6 closed
P55C 2.5v on VRM	VRM installed	Open
P55CT	VRM installed	Open

Continued on next page. . .

# M TECHNOLOGY, INC.

## R525 PENTIUM PCI

... continued from previous page

CPU SPEED CONFIGURATION					
Speed	JP28	JP29	JP31	JP40	JP41
75MHz	Open	Open	1 & 2	1 & 2	1 & 2
90MHz	Open	Closed	2 & 3	1 & 2	1 & 2
100MHz	Closed	Closed	2 & 3	1 & 2	1 & 2
120MHz	Open	Closed	2 & 3	1 & 2	2 & 3
133MHz	Closed	Closed	2 & 3	1 & 2	2 & 3
150MHz	Open	Closed	2 & 3	2 & 3	2 & 3

Note: Pins designated should be in the closed position.

CPU VOLTAGE CONFIGURATION			
Voltage	JP44	JP45	JP46
3.3v	Closed	Open	Open
3.45v - 3.6v	Open	Closed	Open

DMA CONFIGURATION		
DMA	JP6	JP7
DMA 1	pins 2 & 3 closed	pins 2 & 3 closed
DMA 3	pins 1 & 2 closed	pins 1 & 2 closed

PS/2 MOUSE CONFIGURATION					
Setting	JP19	JP20	JP21	JP22	JP23
Disabled	2 & 3	2 & 3	2 & 3	2 & 3	2 & 3
Enabled	1 & 2	1 & 2	1 & 2	1 & 2	1 & 2

Note: Pins designated should be in the closed position.

FLASH BIOS CONFIGURATION		
Setting	JP50	JP51
Normal mode	pins 2 & 3 closed	pins 2 & 3 closed
Programming mode	pins 1 & 2 closed	pins 1 & 2 closed

MISCELLANEOUS TECHNICAL NOTE
Note: The location of some pin 1's are unidentified.