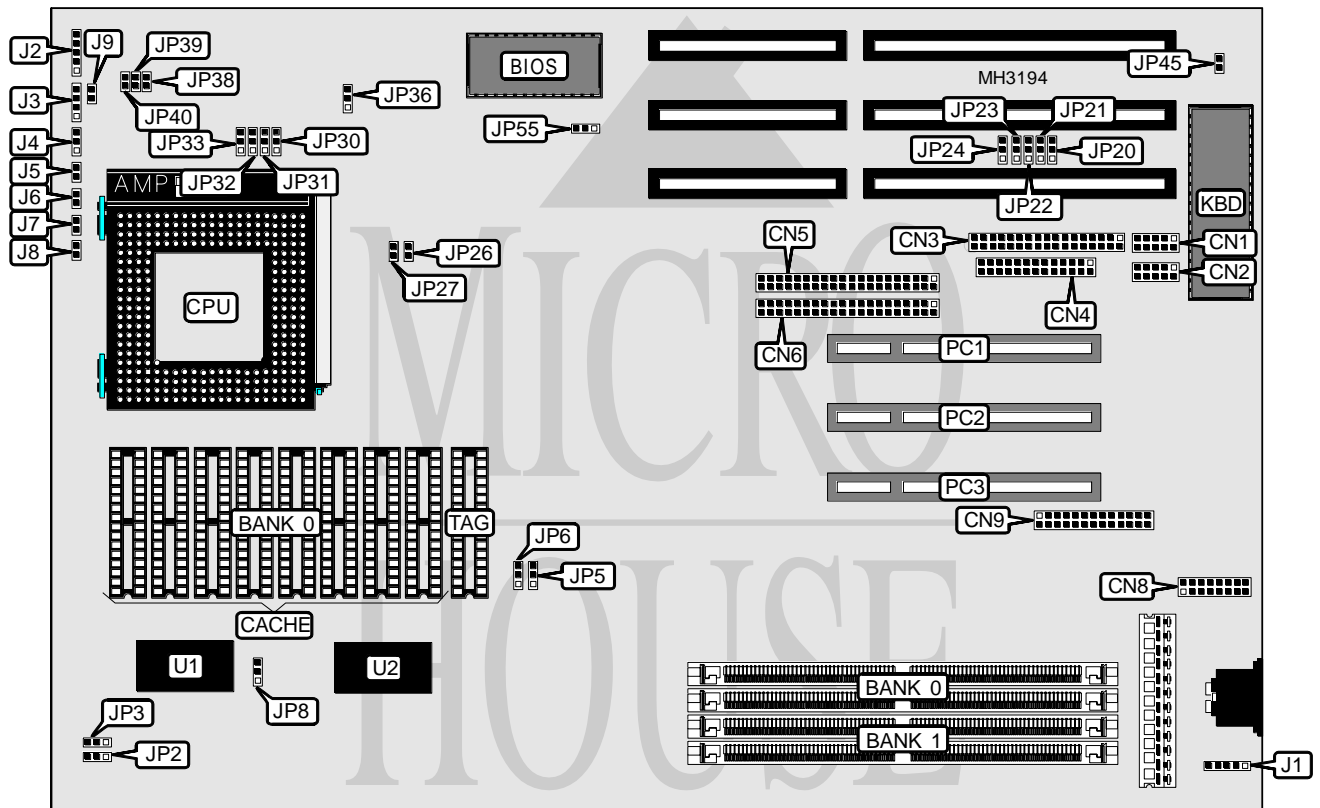


M TECHNOLOGY, INC. R527 PENTIUM PCI/ISA

Processor	CX 6X86/Pentium
Processor Speed	75/90/100/120/133/150/166MHz
Chip Set	SIS
Max. Onboard DRAM	512MB
Cache	256/512/1024KB
BIOS	Award
Dimensions	280mm x 220mm
I/O Options	32-bit PCI slots (3), floppy drive interface, green PC connector, IDE interfaces (2), parallel port, PS/2 mouse interface, serial ports (2), VGA feature connector, VGA interface
NPU Options	None



CONNECTIONS			
Purpose	Location	Purpose	Location
Serial port 2	CN1	Power LED & keylock	J2
Serial port 1	CN2	Speaker	J3
Floppy drive interface	CN3	Turbo switch	J4
Parallel port	CN4	Turbo LED	J5
IDE interface 2	CN5	Reset switch	J6
IDE interface 1	CN6	IDE interface LED 2	J7
VGA interface	CN8	IDE interface LED 1	J9
VGA feature connector	CN9	Green PC connector	J8
PS/2 mouse interface	J1	32-bit PCI slots	PC1 - PC3

Continued on next page. . .

M TECHNOLOGY, INC.

R527 PENTIUM PCI/ISA

... continued from previous page

USER CONFIGURABLE SETTINGS		
Function	Jumper	Position
í Pipeline enabled (only if burst cache is installed)	JP32	pins 1 & 2 closed
Pipeline disabled	JP32	pins 2 & 3 closed
í Cache type select write back	JP33	pins 1 & 2 closed
Cache type select write through	JP33	pins 2 & 3 closed
í CMOS memory normal operation	JP36	pins 1 & 2 closed
CMOS memory clear	JP36	pins 2 & 3 closed
Monitor type select CGA	JP45	Closed
Monitor type select EGA/VGA/monochrome	JP45	Open
í Flash BIOS mode select normal operation	JP55	pins 2 & 3 closed
Flash BIOS mode select programming mode	JP55	pins 1 & 2 closed

DRAM CONFIGURATION 1		
Size	Bank 0	Bank 1
1MB	NONE	(1) 256K x 36
1MB	(1) 256K x 36	NONE
2MB	NONE	(1) 512K x 36
2MB	(1) 512K x 36	NONE
4MB	NONE	(1) 1M x 36
4MB	(1) 1M x 36	NONE
8MB	NONE	(1) 2M x 36
8MB	(1) 2M x 36	NONE
16MB	NONE	(1) 4M x 36
16MB	(1) 4M x 36	NONE
32MB	NONE	(1) 8M x 36
32MB	(1) 8M x 36	NONE
64MB	NONE	(1) 16M x 36
64MB	(1) 16M x 36	NONE
128MB	NONE	(1) 32M x 36
128MB	(1) 32M x 36	NONE

DRAM CONFIGURATION 2		
Size	Banks 0 & 1	Banks 2 & 3
8MB	(2) 1M x 36	NONE
10MB	(2) 1M x 36	(2) 256K x 36
12MB	(2) 1M x 36	(2) 512K x 36
16MB	(2) 2M x 36	NONE
16MB	(2) 1M x 36	(2) 1M x 36
24MB	(2) 2M x 36	(2) 1M x 36
24MB	(2) 1M x 36	(2) 2M x 36
32MB	(2) 4M x 36	NONE
32MB	(2) 2M x 36	(2) 2M x 36
40MB	(2) 4M x 36	(2) 1M x 36
40MB	(2) 1M x 36	(2) 4M x 36
48MB	(2) 4M x 36	(2) 2M x 36

Continued on next page...

M TECHNOLOGY, INC.

R527 PENTIUM PCI/ISA

... continued from previous page

DRAM CONFIGURATION 2 (CON'T)		
Size	Banks 0 & 1	Banks 2 & 3
48MB	(2) 2M x 36	(2) 4M x 36
64MB	(2) 8M x 36	NONE
64MB	(2) 4M x 36	(2) 4M x 36
68MB	(2) 8M x 36	(2) 512K x 36
72MB	(2) 8M x 36	(2) 1M x 36
72MB	(2) 1M x 36	(2) 8M x 36
80MB	(2) 8M x 36	(2) 2M x 36
80MB	(2) 2M x 36	(2) 8M x 36
96MB	(2) 8M x 36	(2) 4M x 36
96MB	(2) 4M x 36	(2) 8M x 36
128MB	(2) 8M x 36	(2) 8M x 36
136MB	(2) 16M x 36	(2) 1M x 36
144MB	(2) 16M x 36	(2) 2M x 36
160MB	(2) 16M x 36	(2) 4M x 36
192MB	(2) 16M x 36	(2) 8M x 36
256MB	(2) 16M x 36	(2) 16M x 36
264MB	(2) 32M x 36	(2) 1M x 36
272MB	(2) 32M x 36	(2) 2M x 36
288MB	(2) 32M x 36	(2) 4M x 36
320MB	(2) 32M x 36	(2) 8M x 36
384MB	(2) 16M x 36	(2) 32M x 36
384MB	(2) 32M x 36	(2) 16M x 36
512MB	(2) 32M x 36	(2) 32M x 36

CACHE CONFIGURATION			
Size	Bank 0	TAG	U1 & U2
256KB (A)	(8) 32K x 8	(1) 8K/16K/32K x 8	NONE
256KB (B)	NONE	(1) 8K/16K/32K x 8	(2) 32K x 32
512KB	(8) 64K x 8	(1) 16K/32K x 8	NONE
1MB	(8) 128K x 8	(1) 32K x 8	NONE

Note: Board can be installed with either standard or burst cache. Both types cannot be present.

CACHE JUMPER CONFIGURATION		
Size	JP5	JP6
256KB (A)	pins 1 & 2 closed	pins 1 & 2 closed
256KB (B)	pins 1 & 2 closed	pins 1 & 2 closed
512KB	pins 2 & 3 closed	pins 1 & 2 closed
1MB	pins 2 & 3 closed	pins 2 & 3 closed

CACHE VOLTAGE CONFIGURATION		
Voltage	JP2	JP3
3.3v/5v mixed	pins 1 & 2 closed	pins 1 & 2 closed
3.3v	pins 2 & 3 closed	pins 2 & 3 closed

Continued on next page...

M TECHNOLOGY, INC.

R527 PENTIUM PCI/ISA

... continued from previous page

CPU TYPE CONFIGURATION	
Type	JP8
Cyrix	pins 1 & 2 closed
Intel	pins 2 & 3 closed
Note: This setting only valid if burst cache is installed.	

CPU SPEED CONFIGURATION					
Speed	Clock speed	JP26	JP27	JP30	JP31
75MHz	50MHz	Closed	Closed	1 & 2	1 & 2
90MHz	60MHz	Closed	Open	1 & 2	1 & 2
100MHz	66MHz	Open	Closed	1 & 2	1 & 2
120MHz	60MHz	Closed	Open	2 & 3	1 & 2
133MHz	66MHz	Open	Closed	2 & 3	1 & 2
150MHz	50MHz	Closed	Closed	1 & 2	2 & 3
150MHz	60MHz	Closed	Open	2 & 3	2 & 3
166MHz	66MHz	Open	Closed	2 & 3	2 & 3
Note: Pins designated should be in the closed position.					

CPU VOLTAGE CONFIGURATION			
Voltage	JP38	JP39	JP40
3.3v	Closed	Open	Open
3.45v - 3.6v	Open	Closed	Open

PS/2 MOUSE CONFIGURATION					
Setting	JP20	JP21	JP22	JP23	JP24
í Enabled	1 & 2	1 & 2	1 & 2	1 & 2	1 & 2
Disabled	2 & 3	2 & 3	2 & 3	2 & 3	2 & 3
Note: Pins designated should be in the closed position.					