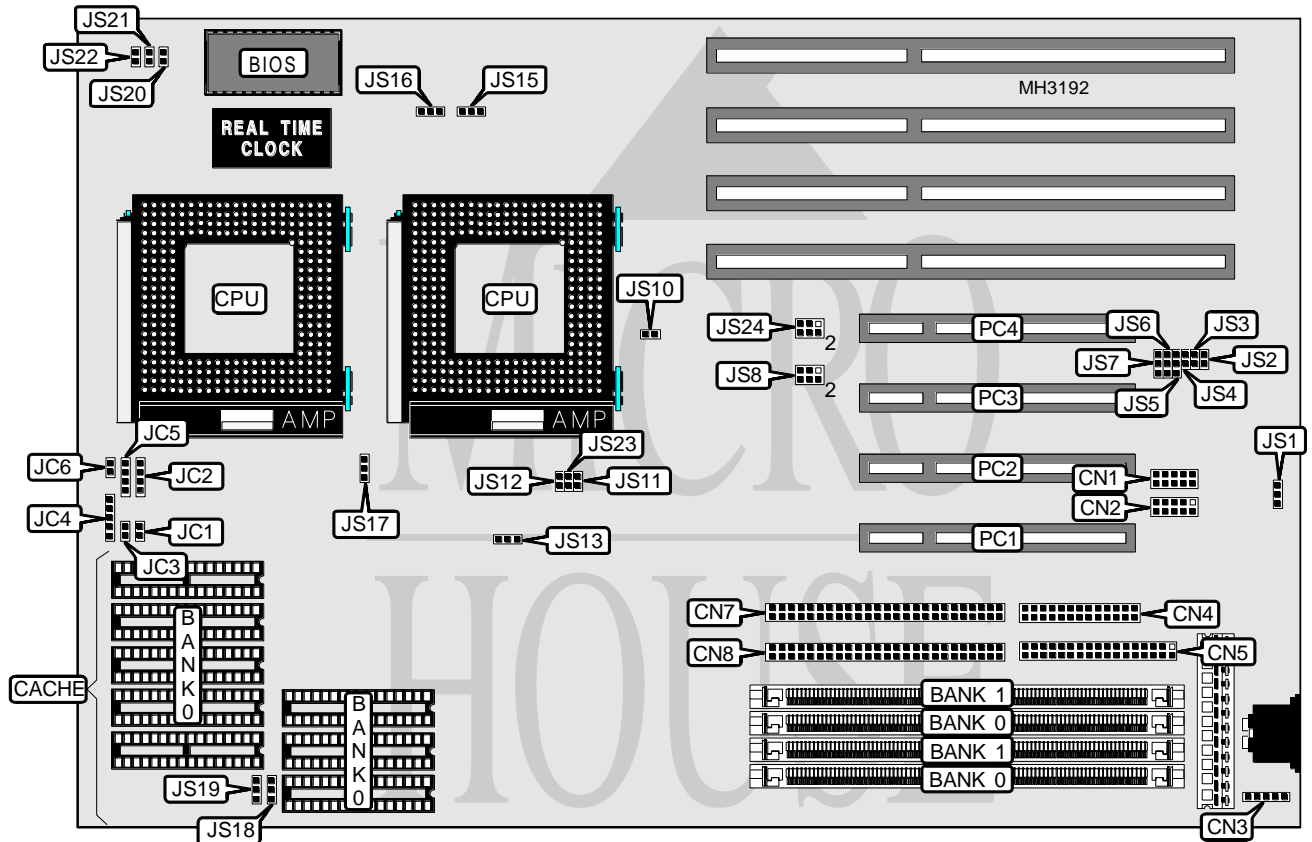


ADVANCED INTEGRATION RESEARCH, INC.

54CDP REV. 2.21

Processor	Pentium
Processor Speed	75/90/100/120/133/150/166MHz
Chip Set	Intel
Max. Onboard DRAM	512MB
Cache	256/512KB
BIOS	AMI
Dimensions	331mm x 221mm
I/O Options	32-bit PCI slots (4), floppy drive interface, SCSI connectors (2), parallel port, PS/2 mouse interface, serial ports (2)
NPU Options	None



CONNECTIONS			
Purpose	Location	Purpose	Location
Serial port 2	CN1	Turbo LED	JC1
Serial port 1	CN2	Speaker	JC2
PS/2 mouse interface	CN3	Turbo switch	JC3
Parallel port	CN4	Power LED & keylock	JC4
Floppy drive interface	CN5	SCSI interface LED	JC5
SCSI-2 interface	CN7	Reset switch	JC6
Wide SCSI-2 interface	CN8	32-bit PCI slots	PC1 - PC4

Continued on next page. . .

ADVANCED INTEGRATION RESEARCH, INC.

54CDP REV. 2.21

... continued from previous page

USER CONFIGURABLE SETTINGS		
Function	Jumper	Position
í CMOS memory normal operation	JS2	Open
CMOS memory clear	JS2	Closed
í Parallel port IRQ select IRQ7	JS5	pins 1 & 2 closed
Parallel port IRQ select IRQ5	JS5	pins 2 & 3 closed
í Flash BIOS mode select programming mode	JS15	pins 1 & 2 closed
Flash BIOS mode select normal mode	JS15	pins 2 & 3 closed
í Factory configured - do not alter	JS16	N/A

DRAM CONFIGURATION		
Size	Bank 0	Bank 1
2MB	(2) 256K x 36	NONE
4MB	(2) 256K x 36	(2) 256K x 36
4MB	(2) 512K x 36	NONE
6MB	(2) 256K x 36	(2) 512K x 36
8MB	(2) 512K x 36	(2) 512K x 36
8MB	(2) 1M x 36	NONE
10MB	(2) 256K x 36	(2) 1M x 36
12MB	(2) 512K x 36	(2) 1M x 36
16MB	(2) 1M x 36	(2) 1M x 36
16MB	(2) 2M x 36	NONE
18MB	(2) 256K x 36	(2) 2M x 36
20MB	(2) 512K x 36	(2) 2M x 36
24MB	(2) 1M x 36	(2) 2M x 36
32MB	(2) 2M x 36	(2) 2M x 36
32MB	(2) 4M x 36	NONE
34MB	(2) 256K x 36	(2) 4M x 36
36MB	(2) 512K x 36	(2) 4M x 36
40MB	(2) 1M x 36	(2) 4M x 36
48MB	(2) 2M x 36	(2) 4M x 36
64MB	(2) 4M x 36	(2) 4M x 36
64MB	(2) 8M x 36	NONE
66MB	(2) 256K x 36	(2) 8M x 36
68MB	(2) 512K x 36	(2) 8M x 36
72MB	(2) 1M x 36	(2) 8M x 36
80MB	(2) 2M x 36	(2) 8M x 36
96MB	(2) 4M x 36	(2) 8M x 36
128MB	(2) 8M x 36	(2) 8M x 36
128MB	(2) 16M x 36	NONE
192MB	(2) 16M x 36	(2) 8M x 36
256MB	(2) 16M x 36	(2) 16M x 36
256MB	(2) 32M x 36	NONE
512MB	(2) 32M x 36	(2) 32M x 36

Continued on next page...

ADVANCED INTEGRATION RESEARCH, INC.
54CDP REV. 2.21

... continued from previous page

CACHE CONFIGURATION	
Size	Bank 0
256KB	(8) 32K x 8
512KB	(8) 64K x 8

CACHE JUMPER CONFIGURATION	
Size	JS13
256KB	pins 1 & 2 closed
512KB	pins 2 & 3 closed

CACHE VOLTAGE CONFIGURATION		
Voltage	JS18	JS19
3.3v	pins 1 & 2 closed	pins 1 & 2 closed
3.3v/5v mixed	pins 2 & 3 closed	pins 2 & 3 closed

CPU CONFIGURATION	
Setting	JS12
í Single CPU installed	Closed
Dual CPU's installed	Open

CPU SPEED CONFIGURATION					
Speed	JS11	JS20	JS21	JS22	JS23
75MHz	Open	Open	Open	Closed	Open
90MHz	Open	Open	Closed	Open	Open
100MHz	Open	Closed	Closed	Open	Open
120MHz	Closed	Open	Closed	Open	Open
133MHz	Closed	Closed	Closed	Open	Open
150MHz	Closed	Open	Closed	Open	Closed
166MHz	Closed	Closed	Closed	Open	Closed

CPU VOLTAGE CONFIGURATION	
Voltage	JS17
í 3.37v	pins 2 & 3 closed
3.53v	pins 1 & 2 closed

ECP MODE CONFIGURATION			
DMA	JS4	JS6	JS7
í Normal mode	Open	Open	Open
DMA 1	Closed	pins 1 & 2 closed	pins 1 & 2 closed
DMA 3	Closed	pins 2 & 3 closed	pins 2 & 3 closed

Continued on next page. . .

ADVANCED INTEGRATION RESEARCH, INC.
54CDP REV. 2.21

... continued from previous page

FLOPPY DRIVE CONFIGURATION		
Mode	JS1	JS3
í Normal floppy mode	Open	Open
Enhanced floppy mode	pins 2 & 3 closed	Closed

SCSI BUS CONFIGURATION	
Type	JS10
í 8-bit ultra fast SCSI	Open
8-bit/16-bit ultra fast-wide SCSI	Closed
16-bit ultra fast-wide SCSI	Closed

PCI SCSI CONFIGURATION	
Setting	JS24
Shared with PCI slot #1	pins 1 & 3, 2 & 4 closed
Shared with PCI slot #4	pins 3 & 5, 4 & 6 closed

PCI SCSI IRQ CONFIGURATION	
IRQ	JS8
í IRQ0	pins 1 & 3 closed
IRQ1	pins 3 & 5 closed
IRQ2	pins 2 & 4 closed
IRQ3	pins 4 & 6 closed

MISCELLANEOUS TECHNICAL NOTE
Note: The location of some of the pin 1's are unidentified.