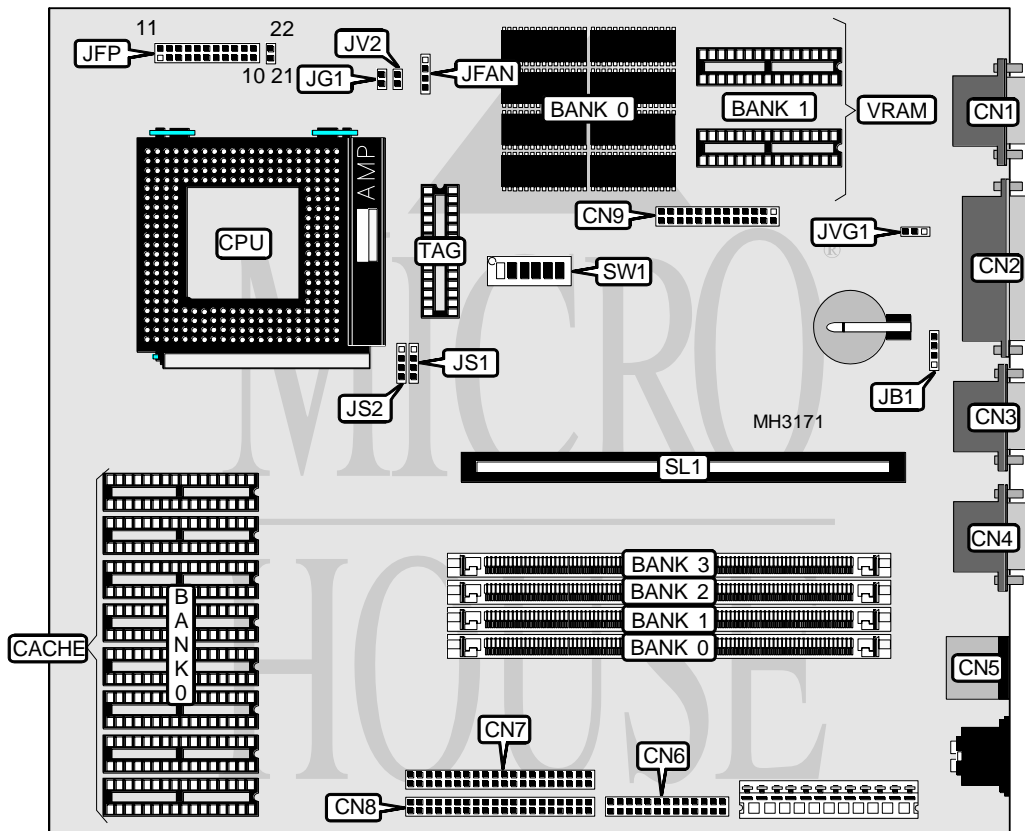


MICRO-STAR INTERNATIONAL CO., LTD.

MS - 5 1 1 6

Processor	CX M1/Pentium
Processor Speed	75/80/90/100/120/133MHz
Chip Set	SIS
Max. Onboard DRAM	512MB
Cache	256/512/1024KB
BIOS	AMI
Dimensions	260mm x 220mm
I/O Options	Floppy drive interface, green PC connector, IDE interfaces (2), parallel port, PS/2 mouse port, serial ports (2), VGA feature connector, VGA port, riser slot
NPU Options	None



CONNECTIONS			
Purpose	Location	Purpose	Location
VGA port	CN1	Chassis fan power	JFAN
Parallel port	CN2	Power LED & keylock	JFP pins 1 - 5
Serial port 2	CN3	Speaker	JFP pins 6 - 10
Serial port 1	CN4	Turbo LED	JFP pins 12 & 13
PS/2 mouse port	CN5	Turbo switch	JFP pins 15 - 17
Floppy drive interface	CN6	Reset switch	JFP pins 19 & 20
IDE interface 2	CN7	IDE interface LED	JFP pins 21 & 22
IDE interface 1	CN8	Green PC connector	JG1
VGA feature connector	CN9	Riser slot	SL1
External battery	JB1		

Continued on next page. . .

MICRO-STAR INTERNATIONAL CO., LTD.

MS - 5116

... continued from previous page

USER CONFIGURABLE SETTINGS		
Function	Jumper	Position
On board VGA enabled	JVG1	pins 1 & 2 closed
On board VGA disabled	JVG1	pins 2 & 3 closed

DRAM CONFIGURATION				
Size	Bank 0	Bank 1	Bank 2	Bank 3
4MB	(1) 1M x 36	NONE	NONE	NONE
4MB	NONE	NONE	(1) 1M x 36	NONE
8MB	(1) 2M x 36	NONE	NONE	NONE
8MB	NONE	NONE	(1) 2M x 36	NONE
8MB	(1) 1M x 36	(1) 1M x 36	NONE	NONE
8MB	NONE	NONE	(1) 1M x 36	(1) 1M x 36
16MB	(1) 4M x 36	NONE	NONE	NONE
16MB	NONE	NONE	(1) 4M x 36	NONE
16MB	(1) 2M x 36	(1) 2M x 36	NONE	NONE
16MB	NONE	NONE	(1) 2M x 36	(1) 2M x 36
16MB	(1) 1M x 36	(1) 1M x 36	(1) 1M x 36	(1) 1M x 36
24MB	(1) 1M x 36	(1) 1M x 36	(1) 2M x 36	(1) 2M x 36
24MB	(1) 2M x 36	(1) 2M x 36	(1) 1M x 36	(1) 1M x 36
32MB	(1) 8M x 36	NONE	NONE	NONE
32MB	NONE	NONE	(1) 8M x 36	NONE
32MB	(1) 4M x 36	(1) 4M x 36	NONE	NONE
32MB	NONE	NONE	(1) 4M x 36	(1) 4M x 36
32MB	(1) 2M x 36	(1) 2M x 36	(1) 2M x 36	(1) 2M x 36
40MB	(1) 1M x 36	(1) 1M x 36	(1) 4M x 36	(1) 4M x 36
40MB	(1) 4M x 36	(1) 4M x 36	(1) 1M x 36	(1) 1M x 36
48MB	(1) 4M x 36	(1) 4M x 36	(1) 2M x 36	(1) 2M x 36
48MB	(1) 2M x 36	(1) 2M x 36	(1) 4M x 36	(1) 4M x 36
64MB	(1) 16M x 36	NONE	NONE	NONE
64MB	NONE	NONE	(1) 16M x 36	NONE
64MB	(1) 8M x 36	(1) 8M x 36	NONE	NONE
64MB	NONE	NONE	(1) 8M x 36	(1) 8M x 36
64MB	(1) 4M x 36	(1) 4M x 36	(1) 4M x 36	(1) 4M x 36
72MB	(1) 1M x 36	(1) 1M x 36	(1) 8M x 36	(1) 8M x 36
72MB	(1) 8M x 36	(1) 8M x 36	(1) 1M x 36	(1) 1M x 36
80MB	(1) 2M x 36	(1) 2M x 36	(1) 8M x 36	(1) 8M x 36
80MB	(1) 8M x 36	(1) 8M x 36	(1) 2M x 36	(1) 2M x 36
96MB	(1) 4M x 36	(1) 4M x 36	(1) 8M x 36	(1) 8M x 36
96MB	(1) 8M x 36	(1) 8M x 36	(1) 4M x 36	(1) 4M x 36
128MB	(1) 32M x 36	NONE	NONE	NONE
128MB	NONE	NONE	(1) 32M x 36	NONE
128MB	(1) 16M x 36	(1) 16M x 36	NONE	NONE
128MB	NONE	NONE	(1) 16M x 36	(1) 16M x 36
128MB	(1) 8M x 36	(1) 8M x 36	(1) 8M x 36	(1) 8M x 36

Continued on next page. . .

MICRO-STAR INTERNATIONAL CO., LTD.

MS - 5116

... continued from previous page

DRAM CONFIGURATION (CON'T)				
Size	Bank 0	Bank 1	Bank 2	Bank 3
136MB	(1) 1M x 36	(1) 1M x 36	(1) 16M x 36	(1) 16M x 36
136MB	(1) 16M x 36	(1) 16M x 36	(1) 1M x 36	(1) 1M x 36
144MB	(1) 16M x 36	(1) 16M x 36	(1) 2M x 36	(1) 2M x 36
144MB	(1) 2M x 36	(1) 2M x 36	(1) 16M x 36	(1) 16M x 36
160MB	(1) 4M x 36	(1) 4M x 36	(1) 16M x 36	(1) 16M x 36
160MB	(1) 16M x 36	(1) 16M x 36	(1) 4M x 36	(1) 4M x 36
192MB	(1) 16M x 36	(1) 16M x 36	(1) 8M x 36	(1) 8M x 36
192MB	(1) 8M x 36	(1) 8M x 36	(1) 16M x 36	(1) 16M x 36
256MB	(1) 32M x 36	(1) 32M x 36	NONE	NONE
256MB	NONE	NONE	(1) 32M x 36	(1) 32M x 36
256MB	(1) 16M x 36	(1) 16M x 36	(1) 16M x 36	(1) 16M x 36
264MB	(1) 1M x 36	(1) 1M x 36	(1) 32M x 36	(1) 32M x 36
264MB	(1) 32M x 36	(1) 32M x 36	(1) 1M x 36	(1) 1M x 36
272MB	(1) 2M x 36	(1) 2M x 36	(1) 32M x 36	(1) 32M x 36
272MB	(1) 32M x 36	(1) 32M x 36	(1) 2M x 36	(1) 2M x 36
288MB	(1) 4M x 36	(1) 4M x 36	(1) 32M x 36	(1) 32M x 36
288MB	(1) 32M x 36	(1) 32M x 36	(1) 4M x 36	(1) 4M x 36
320MB	(1) 8M x 36	(1) 8M x 36	(1) 32M x 36	(1) 32M x 36
320MB	(1) 32M x 36	(1) 32M x 36	(1) 8M x 36	(1) 8M x 36
384MB	(1) 16M x 36	(1) 16M x 36	(1) 32M x 36	(1) 32M x 36
384MB	(1) 32M x 36	(1) 32M x 36	(1) 16M x 36	(1) 16M x 36
512MB	(1) 32M x 36	(1) 32M x 36	(1) 32M x 36	(1) 32M x 36

Note: This board will accept EDO memory.

CACHE CONFIGURATION			
Size	Bank 0	Bank 1	TAG
256KB	(4) 32K x 8	(4) 32K x 8	(1) 8K or (1) 16K x 8
512KB (A)	(4) 64K x 8	(4) 64K x 8	(1) 16K x 8
512KB (B)	(4) 64K x 8	(4) 64K x 8	(1) 16K x 8
1MB	(4) 128K x 8	(4) 128K x 8	(1) 32K x 8

CACHE JUMPER CONFIGURATION		
Size	JS1	JS2
256KB	pins 2 & 3 closed	pins 1 & 2 closed
512KB (A)	pins 3 & 4 closed	pins 3 & 4 closed
512KB (B)	pins 2 & 3 closed	pins 2 & 3 closed
1MB	pins 1 & 2 closed	pins 2 & 3 closed

Note: 512KB (A) uses 128AK TAG chip and 512KB (B) uses 129AK TAG chip.

Continued on next page...

MICRO-STAR INTERNATIONAL CO., LTD.
MS - 5 1 1 6

... continued from previous page

CPU SPEED CONFIGURATION						
Speed	SW1/1	SW1/2	SW1/3	SW1/4	SW1/5	SW1/6
75MHz	Off	Off	Off	Off	Off	On
80MHz*	Off	Off	Off	Off	On	Off
90MHz	Off	Off	Off	On	Off	On
100MHz	Off	Off	Off	On	On	On
120MHz	Off	On	Off	On	Off	On
120MHz*	On	Off	Off	Off	On	Off
133MHz	Off	On	Off	On	On	On

Note: Speeds marked with an * are reserved for future CX M1 CPUs.

CPU VOLTAGE CONFIGURATION	
Voltage	JV2
3.38v	Closed
3.52v	Open

VRAM CONFIGURATION		
Size	Bank 0	Bank 1
1MB	(8) 256K x 4	NONE
1MB	(2) 256K x 16 (U33,U34)	NONE
2MB	(8) 256K x 4	(2) 256K x 16

Note: U33 & U34 are not shown on this board. If they are present they will be located where Bank 0 is positioned.