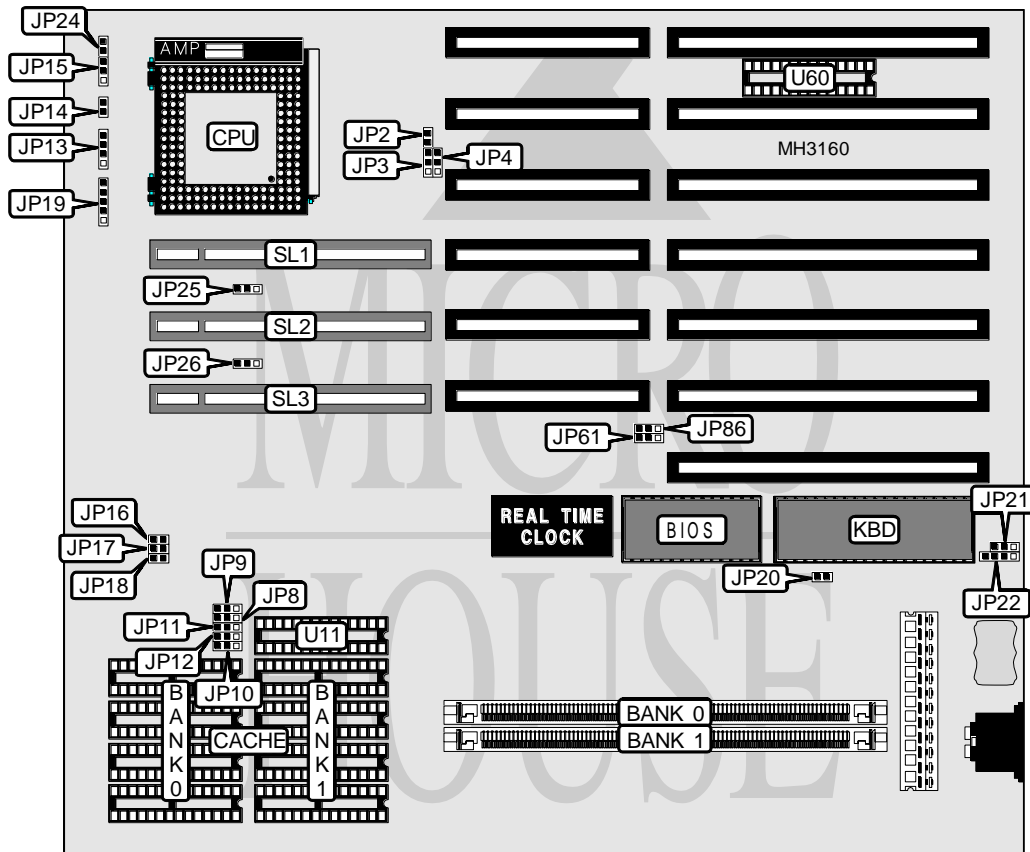


UNIDENTIFIED S 4 8 6 V

Processor	80486SX/80487SX/80486DX/80486DX2
Processor Speed	20/25/33/40/50(internal)/50/66(internal)/80(internal)MHz
Chip Set	SIS
Max. Onboard DRAM	32MB
Cache	64/128/256KB
BIOS	Unidentified
Dimensions	254mm x 218mm
I/O Options	32-bit VESA local bus slots (3)
NPU Options	None



CONNECTIONS			
Purpose	Location	Purpose	Location
Speaker	JP13	External battery	JP22
Turbo LED	JP14	Reset switch	JP24
Turbo switch	JP15	32-bit VESA local bus slots	SL1 - SL3
Power LED & keylock	JP19		

Continued on next page...

UNIDENTIFIED

S486V

... continued from previous page

USER CONFIGURABLE SETTINGS		
Function	Jumper	Position
Monitor type select color	JP20	Closed
Monitor type select monochrome	JP20	Open
í CMOS memory normal operation	JP21	pins 1 & 2 closed
CMOS memory clear	JP21	pins 2 & 3 closed

DRAM CONFIGURATION		
Size	Bank 0	Bank 1
1MB	(1) 256K x 36	NONE
2MB	(1) 256K x 36	(1) 256K x 36
2MB	(1) 512K x 36	NONE
4MB	(1) 512K x 36	(1) 512K x 36
4MB	(1) 1M x 36	NONE
6MB	(1) 512K x 36	(1) 1M x 36
8MB	(1) 1M x 36	(1) 1M x 36
8MB	(1) 2M x 36	NONE
16MB	(1) 2M x 36	(1) 2M x 36
16MB	(1) 4M x 36	NONE
18MB	(1) 512K x 36	(1) 4M x 36
20MB	(1) 1M x 36	(1) 4M x 36
32MB	(1) 4M x 36	(1) 4M x 36

CACHE CONFIGURATION				
Size	Bank 0	Bank 1	TAG (U11)	TAG (U60)
64KB	(4) 8K x 8	(4) 8K x 8	(1) 8K x 8	(1) 8K x 8
128KB	(4) 32K x 8	NONE	(1) 32K x 8	(1) 8K x 8
256KB	(4) 32K x 8	(4) 32K x 8	(1) 32K x 8	(1) 32K x 8

CACHE JUMPER CONFIGURATION							
Size	JP8	JP9	JP10	JP11	JP12	JP61	JP86
64KB	2 & 3	2 & 3	2 & 3	2 & 3	2 & 3	2 & 3	2 & 3
128KB	2 & 3	1 & 2	1 & 2	1 & 2	2 & 3	1 & 2	2 & 3
256KB	1 & 2	1 & 2	2 & 3	Open	1 & 2	1 & 2	1 & 2

Note: Pins designated should be in the closed position.

CPU TYPE CONFIGURATION			
Type	JP2	JP3	JP4
80486SX	Open	pins 2 & 3 closed	Open
80487SX	Closed	pins 1 & 2 closed	pins 2 & 3 closed
80486DX	Closed	pins 1 & 2 closed	pins 1 & 2 closed
80486DX2	Closed	pins 1 & 2 closed	pins 1 & 2 closed

Continued on next page...

UNIDENTIFIED

S486V

... continued from previous page

CPU SPEED CONFIGURATION			
Speed	JP16	JP17	JP18
20MHz	Open	Open	Open
25MHz	Closed	Open	Open
33MHz	Closed	Closed	Closed
40MHz	Closed	Closed	Open
50MHz	Open	Open	Closed
50iMHz	Closed	Open	Open
66iMHz	Closed	Open	Closed
80iMHz	Open	Closed	Closed

VL BUS SPEED CONFIGURATION		
CPU speed	JP25	JP26
<= 33MHz	pins 1 & 2 closed	pins 1 & 2 closed
> 33MHz	pins 2 & 3 closed	pins 2 & 3 closed