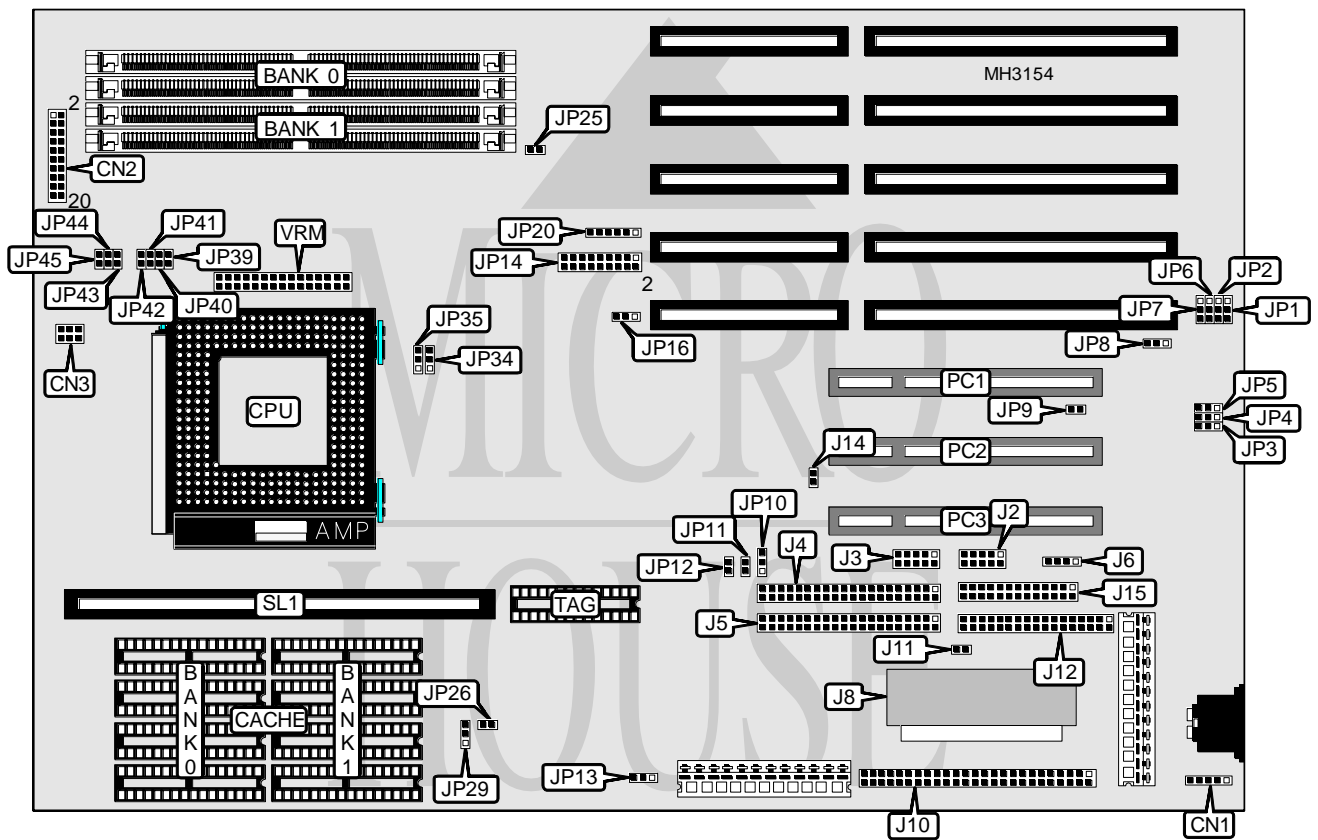


QUICK TECHNOLOGY, INC.

P54TS/P54TSW/P54TSW2

Processor	Pentium
Processor Speed	75/90/100/120/133/150/166/180/200MHz
Chip Set	Intel
Max. Onboard DRAM	128MB
Cache	256/512KB
BIOS	Award
Dimensions	330mm x 220mm
I/O Options	32-bit PCI slots (3), floppy drive interface, green PC connector, IDE interfaces (2), wide SCSI-2 connector, fast SCSI-2 connector, parallel port, PS/2 mouse interface, serial ports (2), VRM connector, cache slot
NPU Options	None



Continued on next page...

QUICK TECHNOLOGY, INC.

P54TS/P54TSW/P54TSW2

... continued from previous page

CONNECTIONS			
Purpose	Location	Purpose	Location
PS/2 mouse interface	CN1	IDE interface 2	J5
Speaker	CN2 pins 1 - 4	Wide SCSI-2 interface	J8
Power LED & keylock	CN2 pins 6 - 10	Fast SCSI-2 interface	J10
Reset switch	CN2 pins 11 & 12	SCSI-2 interface LED	J11
Turbo switch	CN2 pins 13 & 14	Floppy drive interface	J12
Green PC connector	CN2 pins 16 & 17	IDE interface LED	J14
Turbo LED	CN2 pins 18 & 19	Parallel port	J15
Chassis fan power	CN3	32-bit PCI slots	PC1 - PC3
Serial port 1	J2	Cache slot	SL1
Serial port 2	J3	VRM connector	VRM
IDE interface 1	J4		

Note: J8 is not on the P54Ts board.

USER CONFIGURABLE SETTINGS		
Function	Jumper	Position
Factory configured - do not alter	J6	N/A
í Factory configured - do not alter	JP1	pins 2 & 3 closed
í Factory configured - do not alter	JP2	pins 1 & 2 closed
í Printer EPP mode IRCHRDY signal enabled	JP5	pins 1 & 2 closed
Printer EPP mode IRCHRDY signal disabled	JP5	pins 2 & 3 closed
í Factory configured - do not alter	JP6	N/A
í Factory configured - do not alter	JP7	N/A
í Parallel port IRQ select IRQ7	JP8	pins 1 & 2 closed
Parallel port IRQ select IRQ5	JP8	pins 2 & 3 closed
í Enhanced multi I/O enabled	JP9	Open
Enhanced multi I/O disabled	JP9	Closed
í SCSI chip enabled	JP10	pins 1 & 2 closed
SCSI chip disabled	JP10	pins 2 & 3 closed
Primary IDE IRQ14 enabled	JP11	pins 1 & 2 closed
Primary IDE IRQ14 disabled	JP11	pins 2 & 3 closed
Secondary IDE IRQ15 enabled	JP12	pins 1 & 2 closed
Secondary IDE IRQ15 disabled	JP12	pins 2 & 3 closed
í SCSI terminator control select controlled by BIOS	JP13	pins 2 & 3 closed
SCSI terminator control select always on	JP13	pins 1 & 2 closed
SCSI terminator control select always off	JP13	Open
BIOS type select EPROM	JP20	pins 2 & 3, 4 & 5 closed
BIOS type select 5v flash	JP20	pins 2 & 3, 5 & 6 closed
BIOS type select 12V flash	JP20	pins 1 & 2, 5 & 6 closed
í Factory configured - do not alter	JP25	N/A
í SCSI-2 enabled	JP26	Open
Wide SCSI-2 enabled	JP26	Closed

Continued on next page. . .

QUICK TECHNOLOGY, INC.
P54TS/P54TSW/P54TSW2

... continued from previous page

DRAM CONFIGURATION		
Size	Bank 0	Bank 1
2MB	(2) 256K x 36	NONE
4MB	(2) 512K x 36	NONE
4MB	(2) 256K x 36	(2) 256K x 36
6MB	(2) 512K x 36	(2) 256K x 36
6MB	(2) 256K x 36	(2) 512K x 36
8MB	(2) 1M x 36	NONE
8MB	(2) 512K x 36	(2) 512K x 36
10MB	(2) 1M x 36	(2) 256K x 36
10MB	(2) 256K x 36	(2) 1M x 36
12MB	(2) 1M x 36	(2) 512K x 36
12MB	(2) 512K x 36	(2) 1M x 36
16MB	(2) 2M x 36	NONE
16MB	(2) 1M x 36	(2) 1M x 36
18MB	(2) 2M x 36	(2) 256K x 36
18MB	(2) 256K x 36	(2) 2M x 36
20MB	(2) 2M x 36	(2) 512K x 36
20MB	(2) 512K x 36	(2) 2M x 36
24MB	(2) 2M x 36	(2) 1M x 36
24MB	(2) 1M x 36	(2) 2M x 36
32MB	(2) 4M x 36	NONE
32MB	(2) 2M x 36	(2) 2M x 36
34MB	(2) 4M x 36	(2) 256K x 36
34MB	(2) 256K x 36	(2) 4M x 36
36MB	(2) 4M x 36	(2) 512K x 36
36MB	(2) 512K x 36	(2) 4M x 36
40MB	(2) 4M x 36	(2) 1M x 36
40MB	(2) 1M x 36	(2) 4M x 36
48MB	(2) 4M x 36	(2) 2M x 36
48MB	(2) 2M x 36	(2) 4M x 36
64MB	(2) 8M x 36	NONE
64MB	(2) 4M x 36	(2) 4M x 36
66MB	(2) 8M x 36	(2) 256K x 36
66MB	(2) 256K x 36	(2) 8M x 36
68MB	(2) 8M x 36	(2) 512K x 36
68MB	(2) 512K x 36	(2) 8M x 36
72MB	(2) 8M x 36	(2) 1M x 36
72MB	(2) 1M x 36	(2) 8M x 36
80MB	(2) 8M x 36	(2) 2M x 36
80MB	(2) 2M x 36	(2) 8M x 36
96MB	(2) 8M x 36	(2) 4M x 36
96MB	(2) 4M x 36	(2) 8M x 36
128MB	(2) 8M x 36	(2) 8M x 36

Continued on next page...

QUICK TECHNOLOGY, INC.

P54TS/P54TSW/P54TSW2

... continued from previous page

CACHE CONFIGURATION				
Size	Bank 0	Bank 1	TAG	SL1
256KB (A)	(4) 32K x 8	(4) 32K x 8	(1) 8K x 8	Not installed
256KB (B)	NONE	NONE	NONE	Installed
512KB (A)	(4) 64K x 8	(4) 64K x 8	(1) 16K x 8	Not installed
512KB (B)	NONE	NONE	NONE	Installed

Note: If SL1 is used, chips must be removed from Banks 0 & 1 and TAG.

CACHE JUMPER CONFIGURATION	
Size	JP29
256KB	pins 1 & 2 closed
512KB	pins 2 & 3 closed

CACHE TYPE CONFIGURATION		
Type	JP34	JP35
Asynchronous	pins 1 & 2 closed	pins 2 & 3 closed
Burst	pins 2 & 3 closed	pins 1 & 2 closed
Pipeline burst	pins 1 & 2 closed	pins 1 & 2 closed

CPU TYPE CONFIGURATION	
Type	JP16
P54C/CS/CT	pins 1 & 2 closed
P55C/CT	pins 2 & 3 closed

CPU SPEED CONFIGURATION	
Speed	JP14
75MHz	pins 1 & 2 closed
90MHz	pins 3 & 4 closed
100MHz	pins 5 & 6 closed
120MHz	pins 7 & 8 closed
133MHz	pins 9 & 10 closed
150MHz	pins 11 & 12 closed
166MHz	pins 13 & 14 closed
180MHz	pins 15 & 16 closed
200MHz	pins 17 & 18 closed

CPU VOLTAGE CONFIGURATION			
Voltage	JP43	JP44	JP45
3.4v	Open	Open	Closed
3.5v	Open	Closed	Open
3.6v	Closed	Open	Open

Continued on next page. . .

QUICK TECHNOLOGY, INC.
P54TS/P54TSW/P54TSW2

... continued from previous page

VRM CONFIGURATION				
Setting	JP39	JP40	JP41	JP42
VRM not installed	Closed	Closed	Closed	Closed
VRM installed	Open	Open	Open	Open

DMA CONFIGURATION		
DMA	JP3	JP4
DMA 1	pins 1 & 2 closed	pins 1 & 2 closed
DMA 3	pins 2 & 3 closed	pins 2 & 3 closed