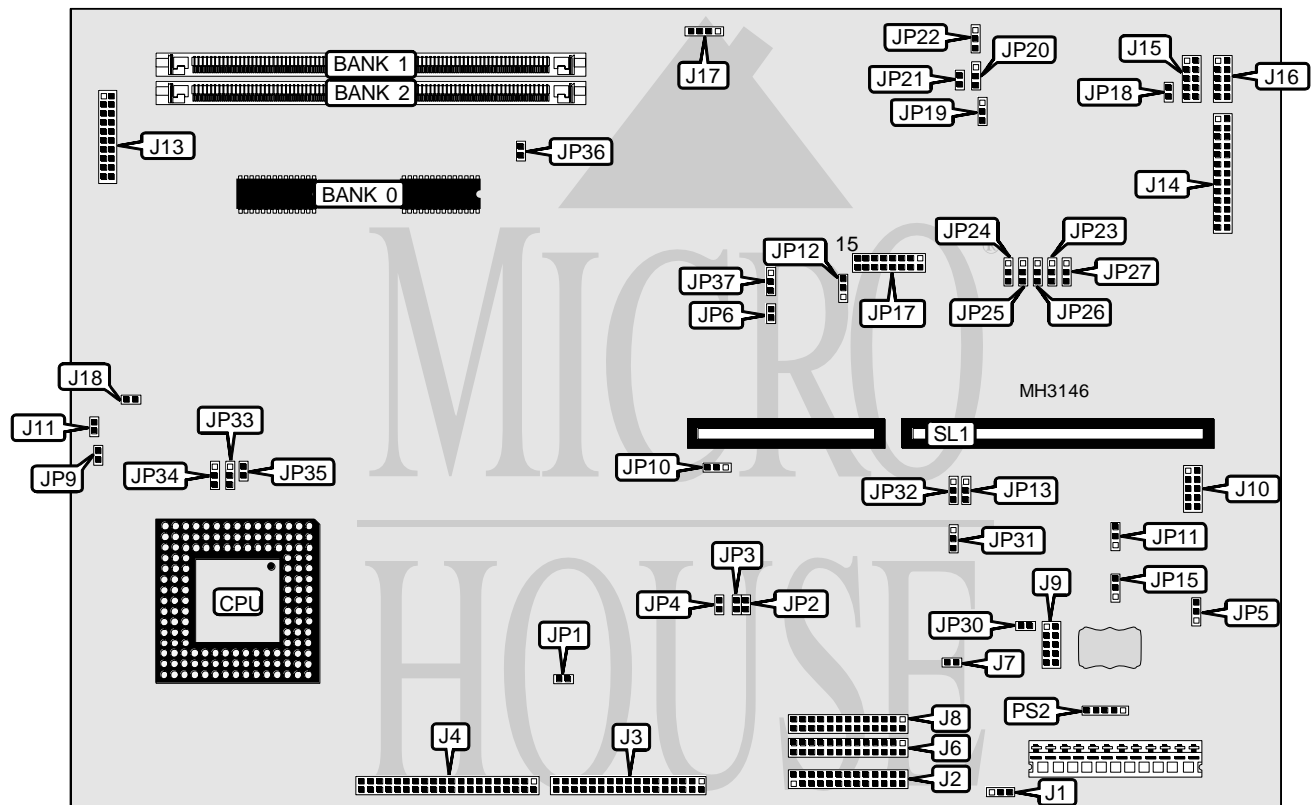


# IPC CORPORATION, LTD.

## IPC MBPOSIIIS

<b>Processor</b>	80486SX/80487SX/80486DX/80486DX2
<b>Processor Speed</b>	25/33/50(internal)/66(internal)MHz
<b>Chip Set</b>	Acer
<b>Max. Onboard DRAM</b>	33MB
<b>Cache</b>	None
<b>BIOS</b>	Unidentified
<b>Dimensions</b>	330mm x 218mm
<b>I/O Options</b>	32-bit external memory card, 32-bit system memory card, 32-bit VESA local bus slots (2), 32-bit PCI slots (2), bus mouse port, floppy drive interface, game port, green PC connector, IDE interface, IDE interfaces (2), SCSI connector, parallel port, PS/2 mouse port, serial ports (2), serial port, VGA feature connector, VGA port, VRM connector, cache slot
<b>NPU Options</b>	None



Continued on next page. . .

# IPC CORPORATION, LTD.

## IPC MB POSI IIS

... continued from previous page

CONNECTIONS			
Purpose	Location	Purpose	Location
Numeric display power connector	J1	Speaker	J11
Serial port 2/external floppy	J2	Keyboard controller interface	J13
Floppy drive interface	J3	Parallel port	J14
IDE interface	J4	Serial port 1	J15
Numeric display port connector	J5	Scanner port	J16
Internal numeric display connector	J6	External keyboard connector	J17
External numeric display connector	J8	Reset switch	JP9
Printer power output connector	J9	Printer power input connector	PS2
Drawer port connector	J10	Riser slot	SL1

Note: The location of J5 is unidentified.

USER CONFIGURABLE SETTINGS		
Function	Jumper	Position
í Floppy drive set as B drive	J7	Open
Floppy drive set as A drive	J7	Closed
í Buzzer enabled	J18	Closed
Buzzer disabled	J18	Open
Monitor type select monochrome	JP1	Open
Monitor type select color/EGA/VGA	JP1	Closed
í 5v to external floppy drive disabled	JP2	Open
5v to external floppy drive enabled	JP2	Closed
í 12v to external floppy drive disabled	JP3	Open
12v to external floppy drive enabled	JP3	Closed
í Factory configured - do not alter	JP4	N/A
í Drawer port voltage select 12v	JP5	pins 1 & 2 closed
Drawer port voltage select 25v	JP5	pins 2 & 3 closed
í IDE interface enabled	JP6	Closed
IDE interface disabled	JP6	Open
í Reset disabled	JP9	Open
Reset enabled	JP9	Closed
CMOS memory clear BQ3287 AMT	JP10	pins 1 & 2 closed
CMOS memory clear BQ3287 MT	JP10	pins 2 & 3 closed
í Keylock level 1 control floppy access disabled	JP12	pins 2 & 3 closed
Keylock level 1 control floppy access enabled	JP12	pins 1 & 2 closed
í Parallel port IRQ select IRQ7	JP13	pins 2 & 3 closed
Parallel port IRQ select IRQ5	JP13	pins 1 & 2 closed
í 12v to scanner port disabled	JP18	Open
12v to scanner port enabled	JP18	Closed
í Keylock level 1 control NVR write access disabled	JP19	pins 1 & 2 closed
Keylock level 1 control NVR write access enabled	JP19	pins 2 & 3 closed
í Non volatile RAM type select 128KB	JP21	Open
Non volatile RAM type select 8/32KB	JP21	Closed
í Factory configured - do not alter	JP30	N/A

Continued on next page. . .

# IPC CORPORATION, LTD.

## IPC MB POSI IIS

... continued from previous page

USER CONFIGURABLE SETTINGS (CON'T)		
Function	Jumper	Position
í Factory configured - do not alter	JP1	Unidentified
í Factory configured - do not alter	JP2	Unidentified
í Factory configured - do not alter	JP31	pins 2 & 3 closed
í Factory configured - do not alter	JP32	N/A
í Factory configured - do not alter	JP36	Closed
í Floppy drive interface enabled	JP37	pins 1 & 2 closed
Floppy drive interface disabled	JP37	pins 2 & 3 closed

Note: Jumpers JP1 and JP2 are used for DMA channel selection. Settings are unidentified.

DRAM CONFIGURATION			
Size	Bank 0	Bank 1	Bank 2
1MB	(2) 256KB	NONE	NONE
2MB	(2) 256KB	(1) 256K x 36	NONE
3MB	(2) 256KB	(1) 256K x 36	(1) 256K x 36
5MB	(2) 256KB	(1) 1M x 36	NONE
9MB	(2) 256KB	(1) 1M x 36	(1) 1M x 36
17MB	(2) 256KB	(1) 4M x 36	NONE
33MB	(2) 256KB	(1) 4M x 36	(1) 4M x 36

Note: Banks 0 is factory installed and is not configurable.

CPU TYPE CONFIGURATION			
Type	JP33	JP34	JP35
80486SX	pins 2 & 3 closed	Open	Open
80487SX	pins 1 & 2 closed	pins 1 & 2 closed	Closed
80486DX	pins 1 & 2 closed	pins 2 & 3 closed	Closed
80486DX2	pins 1 & 2 closed	pins 2 & 3 closed	Closed

KEYLOCK LEVEL 1 OR 5 TO CONTROL NVR READ ACCESS CONFIGURATION		
Setting	JP20	JP22
í Disabled	pins 1 & 2 closed	pins 1 & 2 closed
Enabled	pins 2 & 3 closed	pins 2 & 3 closed

I/O ADDRESS CONFIGURATION	
Address	JP17
í 100H	pins 1 & 2 closed
110H	pins 3 & 4 closed
120H	pins 5 & 6 closed
130H	pins 7 & 8 closed
140H	pins 9 & 10 closed
150H	pins 11 & 12 closed
160H	pins 13 & 14 closed
170H	pins 15 & 16 closed

Continued on next page. . .

IPC CORPORATION, LTD.  
IPC MB POSI IIS

... continued from previous page

PARALLEL PORT CONFIGURATION		
LPT	JP23	JP25
í LPT2	pins 1 & 2 closed	pins 1 & 2 closed
LPT1	pins 1 & 2 closed	pins 2 & 3 closed
LPT3	pins 2 & 3 closed	pins 1 & 2 closed
Disabled	pins 2 & 3 closed	pins 2 & 3 closed

SERIAL PORT CONFIGURATION			
UART 1	UART 2	JP11	JP15
í COM1	COM2	pins 1 & 2 closed	pins 2 & 3 closed
COM1	COM4	pins 1 & 2 closed	pins 1 & 2 closed
COM3	COM4	pins 2 & 3 closed	pins 2 & 3 closed
COM2	COM3	pins 2 & 3 closed	pins 1 & 2 closed

UART CONFIGURATION				
UART 1	UART 2	JP24	JP26	JP27
Enabled	Enabled	pins 1 & 2 closed	pins 1 & 2 closed	pins 1 & 2 closed
Enabled	Disabled	pins 2 & 3 closed	pins 1 & 2 closed	pins 1 & 2 closed
UART 2	UART 1	pins 1 & 2 closed	pins 1 & 2 closed	pins 2 & 3 closed
Disabled	UART 1	pins 1 & 2 closed	pins 2 & 3 closed	pins 2 & 3 closed
Disabled	Enabled	pins 1 & 2 closed	pins 2 & 3 closed	pins 1 & 2 closed
UART 2	Disabled	pins 2 & 3 closed	pins 1 & 2 closed	pins 2 & 3 closed
Disabled	Disabled	pins 2 & 3 closed	pins 2 & 3 closed	N/A