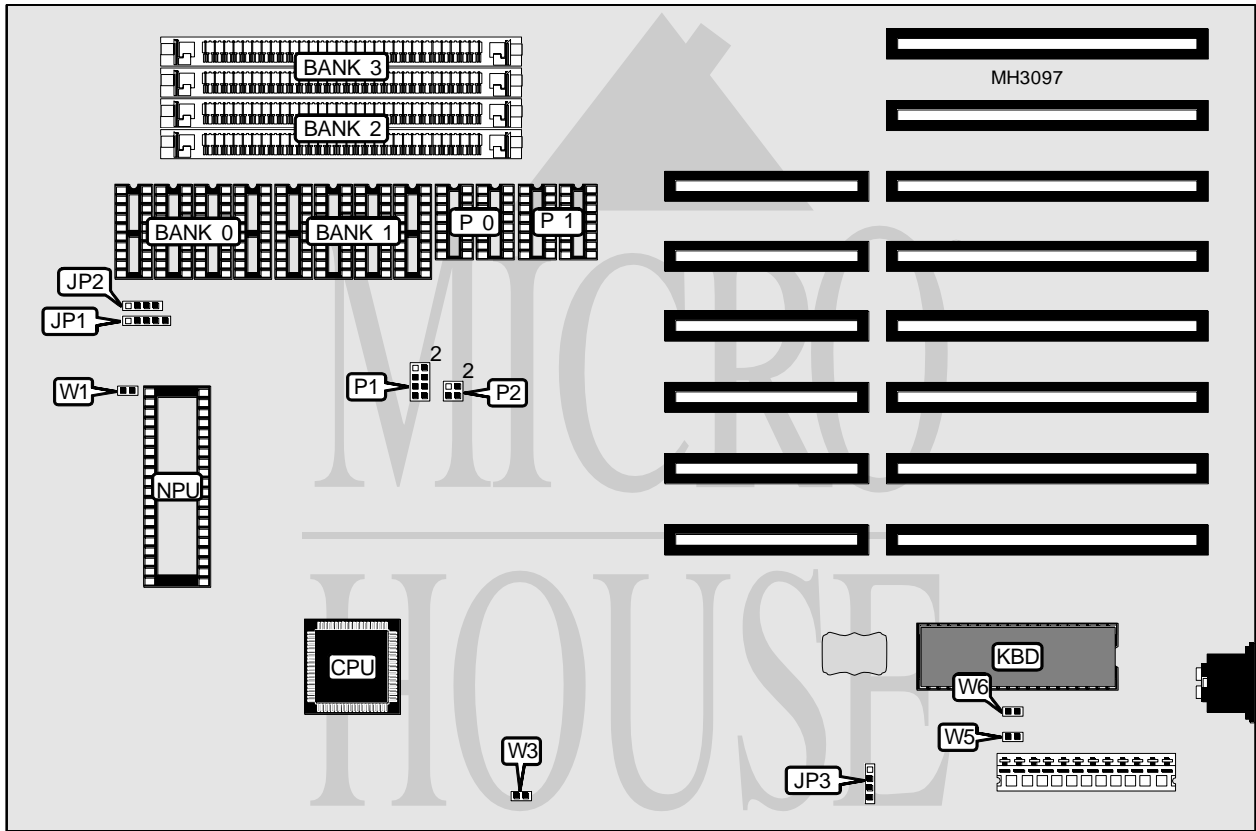


# DTK COMPUTER, INC.

## GRAFIKA 2A/TECH-1636

<b>Processor</b>	80286
<b>Processor Speed</b>	16MHz
<b>Chip Set</b>	C & T
<b>Max. Onboard DRAM</b>	5MB
<b>Cache</b>	None
<b>BIOS</b>	DTK
<b>Dimensions</b>	330mm x 218mm
<b>I/O Options</b>	None
<b>NPU Options</b>	80287



CONNECTIONS			
Purpose	Location	Purpose	Location
Power LED & keylock	JP1	Turbo switch	W1
Speaker	JP2	Reset switch	W3
External battery	JP3	Turbo LED	W5

Continued on next page. . .

DTK COMPUTER, INC.  
GRAFIKA 2A/TECH-1636

... continued from previous page

USER CONFIGURABLE SETTINGS		
Function	Jumper	Position
Monitor type select monochrome	W6	Open
Monitor type select color	W6	Closed

DRAM CONFIGURATION						
Size	Bank 0	P 0	Bank 1	P 1	Bank 2	Bank 3
512KB	(4) 44256	(2) 41256	NONE	NONE	NONE	NONE
1MB	(4) 44256	(2) 41256	(4) 44256	(2) 41256	NONE	NONE
1.5MB	(4) 44256	(2) 41256	(4) 44256	(2) 41256	(2) 256K x 9	NONE
2MB (A)	(4) 44256	(2) 41256	(4) 44256	(2) 41256	(2) 256K x 9	(2) 256K x 9
2MB (B)	NONE	NONE	NONE	NONE	(2) 1M x 9	NONE
2.5MB	(4) 44256	(2) 41256	NONE	NONE	(2) 1M x 9	NONE
3MB	(4) 44256	(2) 41256	(4) 44256	(2) 41256	(2) 1M x 9	NONE
4MB	NONE	NONE	NONE	NONE	(2) 1M x 9	(2) 1M x 9
5MB	(4) 44256	(2) 41256	(4) 44256	(2) 41256	(2) 1M x 9	(2) 1M x 9

DRAM JUMPER CONFIGURATION		
Size	P1	P2
512KB	pins 1 & 2, 3 & 4, 5 & 6, 7 & 8 closed	Open
1MB	pins 1 & 2, 3 & 4, 5 & 6, 7 & 8 closed	Open
1.5MB	pins 1 & 2, 3 & 4, 5 & 6, 7 & 8 closed	Open
2MB (A)	pins 1 & 2, 3 & 4, 5 & 6, 7 & 8 closed	Open
2MB (B)	Open	pins 1 & 2, 3 & 4 closed
2.5MB	pins 1 & 2, 3 & 4, 5 & 6, 7 & 8 closed	Open
3MB	pins 1 & 2, 3 & 4, 5 & 6, 7 & 8 closed	Open
4MB	Open	pins 1 & 2, 3 & 4 closed
5MB	pins 1 & 2, 3 & 4, 5 & 6, 7 & 8 closed	Open