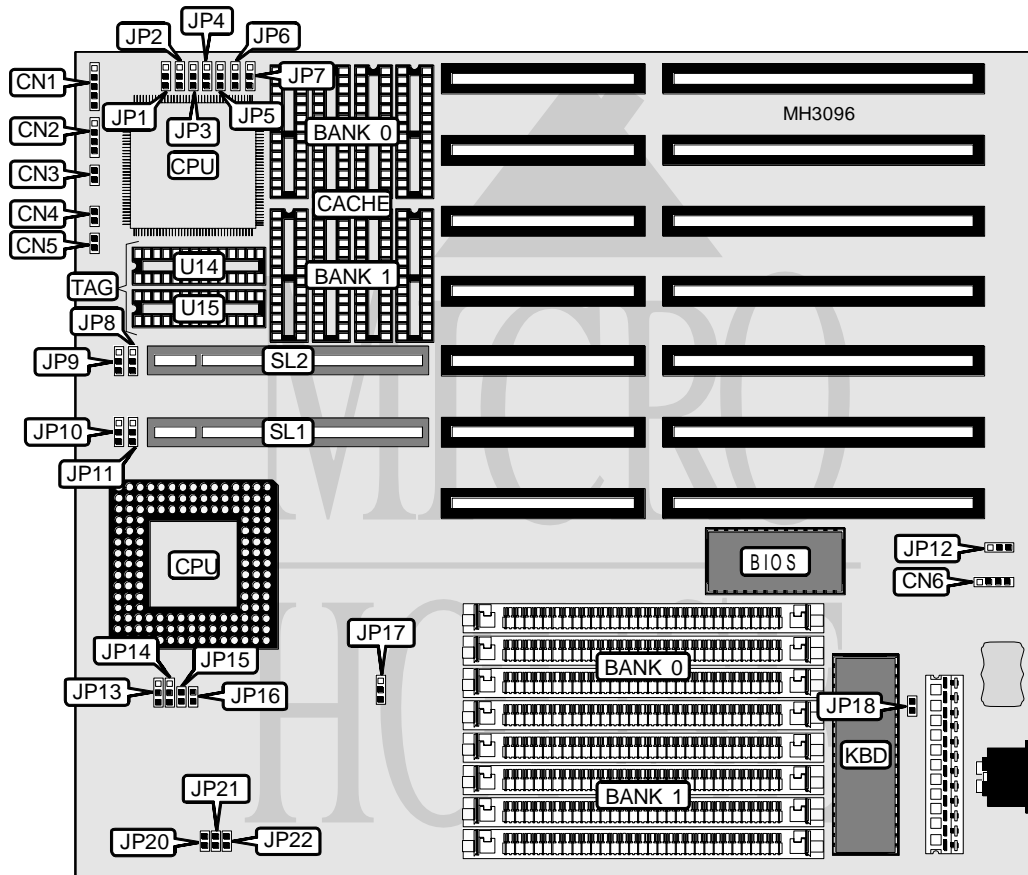


DTK COMPUTER, INC. GRAFKA 4 V 2

Processor	80486SX/80487SX/80486DX/80486DX2/Pentium Overdrive
Processor Speed	20/25/33/40/50(internal)/50/66(internal)MHz
Chip Set	SIS
Max. Onboard DRAM	32MB
Cache	64/128/256KB
BIOS	AMI/Award/DTK
Dimensions	260mm x 220mm
I/O Options	32-bit VESA local bus slots (2)
NPU Options	None



CONNECTIONS			
Purpose	Location	Purpose	Location
Power LED & keylock	CN1	Reset switch	CN5
Speaker	CN2	External battery	CN6
Turbo switch	CN3	32-bit VESA local bus slots	SL1 & SL2
Turbo LED	CN4		

Continued on next page. . .

DTK COMPUTER, INC.

GRAFKA 4V2

... continued from previous page

USER CONFIGURABLE SETTINGS		
Function	Jumper	Position
í Battery type select external	JP12	pins 1 & 2 closed
Battery type select internal	JP12	pins 2 & 3 closed
í CPU type select PGA	JP16	Closed
CPU type select PQFP	JP16	Open
í A20 chip supported	JP17	pins 1 & 2 closed
8042 chip supported	JP17	pins 2 & 3 closed
í Monitor type select monochrome	JP18	Closed
Monitor type select color	JP18	Open

DRAM CONFIGURATION		
Size	Bank 0	Bank 1
1MB	(4) 256K x 9	NONE
2MB	(4) 256K x 9	(4) 256K x 9
2MB	(4) 512K x 9	NONE
4MB	(4) 1M x 9	NONE
4MB	(4) 512K x 9	(4) 512K x 9
6MB	(4) 512K x 9	(4) 1M x 9
8MB	(4) 1M x 9	(4) 1M x 9
8MB	(4) 2M x 9	NONE
16MB	(4) 4M x 9	NONE
16MB	(4) 2M x 9	(4) 2M x 9
18MB	(4) 512K x 9	(4) 4M x 9
20MB	(4) 1M x 9	(4) 4M x 9
32MB	(4) 4M x 9	(4) 4M x 9

CACHE CONFIGURATION				
Size	Bank 0	Bank 1	TAG (U14)	TAG (U15)
64KB	(4) 8K x 8	(4) 8K x 8	(1) 8K x 8	(1) 8K x 8
128KB	(4) 32K x 8	NONE	(1) 8K x 8	(1) 8K x 8
256KB	(4) 32K x 8	(4) 32K x 8	(1) 16K or (1) 32K x 8	(1) 16K or (1) 32K x 8

CACHE JUMPER CONFIGURATION							
Size	JP1	JP2	JP3	JP4	JP5	JP6	JP7
64KB	1 & 2	1 & 2	1 & 2	1 & 2	2 & 3	Open	1 & 2
128KB	2 & 3	1 & 2	2 & 3	1 & 2	1 & 2	1 & 2	2 & 3
256KB	2 & 3	2 & 3	2 & 3	2 & 3	2 & 3	2 & 3	2 & 3

Note: Pins designated should be in the closed position.

Continued on next page...

DTK COMPUTER, INC.

GRAFIKA 4V2

... continued from previous page

CPU TYPE CONFIGURATION			
Type	JP13	JP14	JP15
80486SX	Open	pins 2 & 3 closed	Open
80487SX	pins 2 & 3 closed	pins 1 & 2 closed	Closed
80486DX	pins 1 & 2 closed	pins 1 & 2 closed	Closed
80486DX2	pins 1 & 2 closed	pins 1 & 2 closed	Closed
Pentium Overdrive	pins 2 & 3 closed	pins 1 & 2 closed	Closed

CPU SPEED CONFIGURATION			
Speed	JP20	JP21	JP22
20MHz	Open	Open	Open
25MHz	Open	Open	Closed
33MHz	Closed	Closed	Closed
40MHz	Open	Closed	Closed
50MHz	Open	Open	Closed
50MHz	Closed	Open	Open
66MHz	Closed	Closed	Closed

VESA WAIT STATE CONFIGURATION		
Wait states	JP9	JP11
0 wait states	pins 1 & 2 closed	pins 1 & 2 closed
1 wait state	pins 2 & 3 closed	pins 2 & 3 closed

VL BUS SPEED CONFIGURATION		
CPU speed	JP8	JP10
≤ 33MHz	pins 1 & 2 closed	pins 1 & 2 closed
> 33MHz	pins 2 & 3 closed	pins 2 & 3 closed