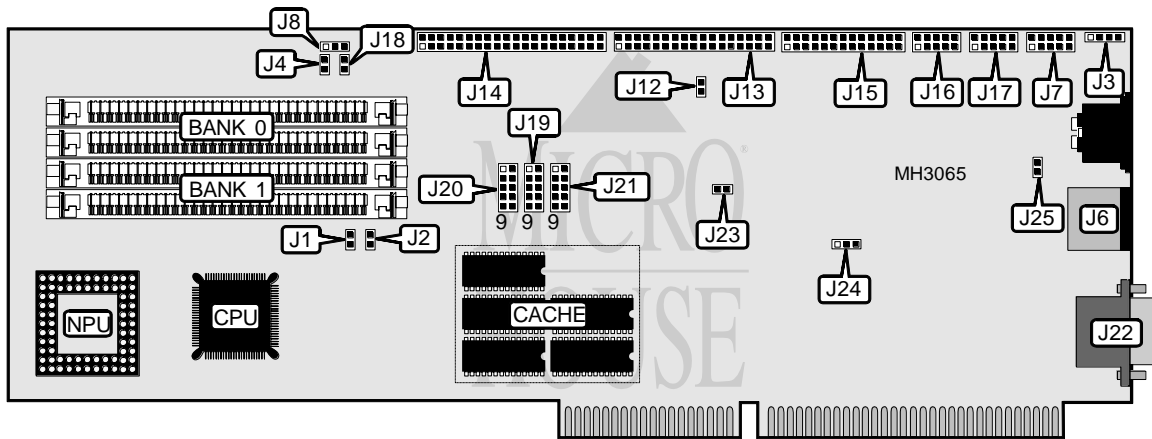


I-BUS

LB486SLC

Processor	CX486SLC
Processor Speed	33MHz
Chip Set	OPTI
Max. Onboard DRAM	16MB
Cache	128KB
BIOS	Unidentified
Dimensions	300mm x 89mm
I/O Options	Floppy drive interface, IDE interface, parallel port, PS/2 mouse port, serial ports (2), VGA port
NPU Options	80387SX



CONNECTIONS			
Purpose	Location	Purpose	Location
Speaker	J3	Parallel port	J15
Reset switch	J4	Serial port 1	J16
PS/2 mouse port	J6	Serial port 2	J17
Auxiliary keyboard connector	J7	IDE interface LED	J18
Floppy drive interface	J13	VGA port	J22
IDE interface	J14		

Continued on next page. . .

I-BUS

LB486SLC

... continued from previous page

USER CONFIGURABLE SETTINGS		
Function	Jumper	Position
í Factory configured - do not alter	J1	Closed
í Factory configured - do not alter	J2	Closed
í Battery type select internal	J8	pins 2 & 3 closed
CMOS memory clear	J8	pins 1 & 2 closed
IDE IRQ14 enabled	J12	Closed
IDE IRQ14 disabled	J12	Open
VGA IRQ9 enabled	J23	Closed
VGA IRQ9 disabled	J23	Open
On board video disabled	J24	pins 1 & 2 closed
On board video enabled	J24	pins 2 & 3 closed
Password enabled	J25	Closed
Password disabled	J25	Open

DRAM CONFIGURATION		
Size	Bank 0	Bank 1
512KB	(2) 256K x 9	NONE
1MB	(2) 256K x 9	(2) 256K x 9
2MB	(2) 1M x 9	NONE
4MB	(2) 1M x 9	(2) 1M x 9
8MB	(2) 4M x 9	NONE
16MB	(2) 4M x 9	(2) 4M x 9

CACHE CONFIGURATION

Note: 128KB cache is factory installed and is not configurable.

PARALLEL PORT IRQ CONFIGURATION	
IRQ	J21
IRQ3	pins 3 & 4 closed
IRQ4	pins 5 & 6 closed
IRQ5	pins 7 & 8 closed
IRQ7	pins 9 & 10 closed
IRQ12	pins 1 & 2 closed

SERIAL PORT 1 IRQ CONFIGURATION	
IRQ	J20
IRQ3	pins 3 & 4 closed
IRQ4	pins 5 & 6 closed
IRQ5	pins 7 & 8 closed
IRQ7	pins 9 & 10 closed
IRQ12	pins 1 & 2 closed

Continued on next page...

I-BUS

LB486SLC

... continued from previous page

SERIAL PORT 2 IRQ CONFIGURATION	
IRQ	J19
IRQ3	pins 3 & 4 closed
IRQ4	pins 5 & 6 closed
IRQ5	pins 7 & 8 closed
IRQ7	pins 9 & 10 closed
IRQ12	pins 1 & 2 closed