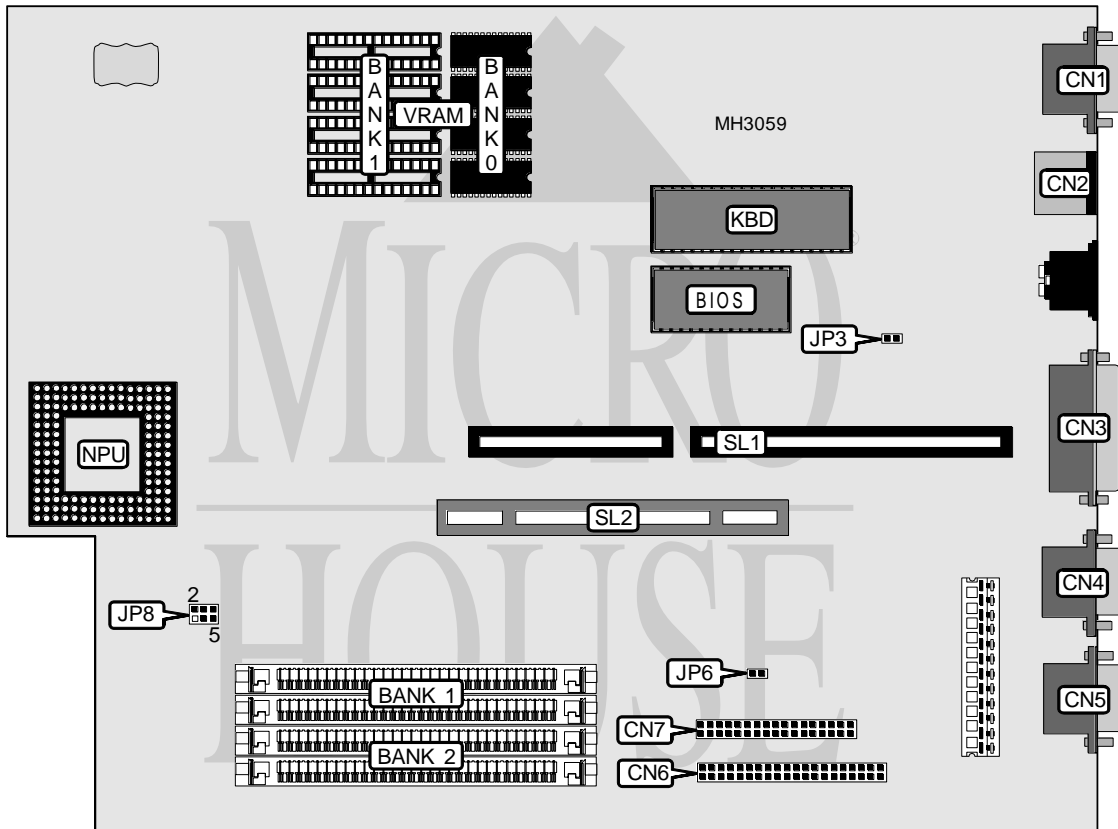


ADVANCED LOGIC RESEARCH, INC.

FLYER SD+

Processor	80486SX/80486DX (depends on CPU card installed)
Processor Speed	25/33MHz
Chip Set	Unidentified
Max. Onboard DRAM	16MB
Cache	256KB (on external cache card)
BIOS	Unidentified
Dimensions	330mm x 218mm
I/O Options	Floppy drive interface, IDE interface, parallel port, PS/2 mouse port, serial ports (2), VGA port, CPU/cache slot
NPU Options	4167



CONNECTIONS			
Purpose	Location	Purpose	Location
VGA port	CN1	IDE interface	CN6
PS/2 mouse port	CN2	Floppy drive interface	CN7
Parallel port	CN3	Riser slot	SL1
Serial port 1	CN4	CPU\cache slot	SL2
Serial port 2	CN5		
Note: The location of pin 1 is unidentified.			

Continued on next page. . .

ADVANCED LOGIC RESEARCH, INC.

FLYER SD+

... continued from previous page

USER CONFIGURABLE SETTINGS		
Function	Jumper	Position
í On board mouse enabled	JP3	Open
On board mouse disabled	JP3	Closed
í On board VGA enabled	JP6	Closed
On board VGA disabled	JP6	Open

DRAM CONFIGURATION			
Size	Bank 0	Bank 1	Bank 2
2MB	2MB	NONE	NONE
4MB	2MB	(2) 1M x 9	NONE
6MB	2MB	(2) 1M x 9	(2) 1M x 9
10MB	2MB	(2) 4M x 9	
12MB	2MB	(2) 1M x 9	(2) 4M x 9
16MB	2MB	(2) 4M x 9	(2) 4M x 9

Note: The location of Bank 0 is unidentified. Bank 0 is factory installed and is not configurable. If 16MB is installed, Bank 0 is automatically disabled.

DRAM JUMPER CONFIGURATION	
Size	JP8
2MB - 12MB	pins 1 & 3, 2 & 4 closed
16MB only	pins 3 & 5, 4 & 6 closed

CACHE CONFIGURATION
Note: 256KB cache is located on the CPU/cache card.

VRAM CONFIGURATION		
Size	Bank 0	Bank 1
512KB	(4) 256K x 16	NONE
1MB	(4) 256K x 16	(4) 256K x 16

Note: Bank 0 is factory installed and is not configurable.