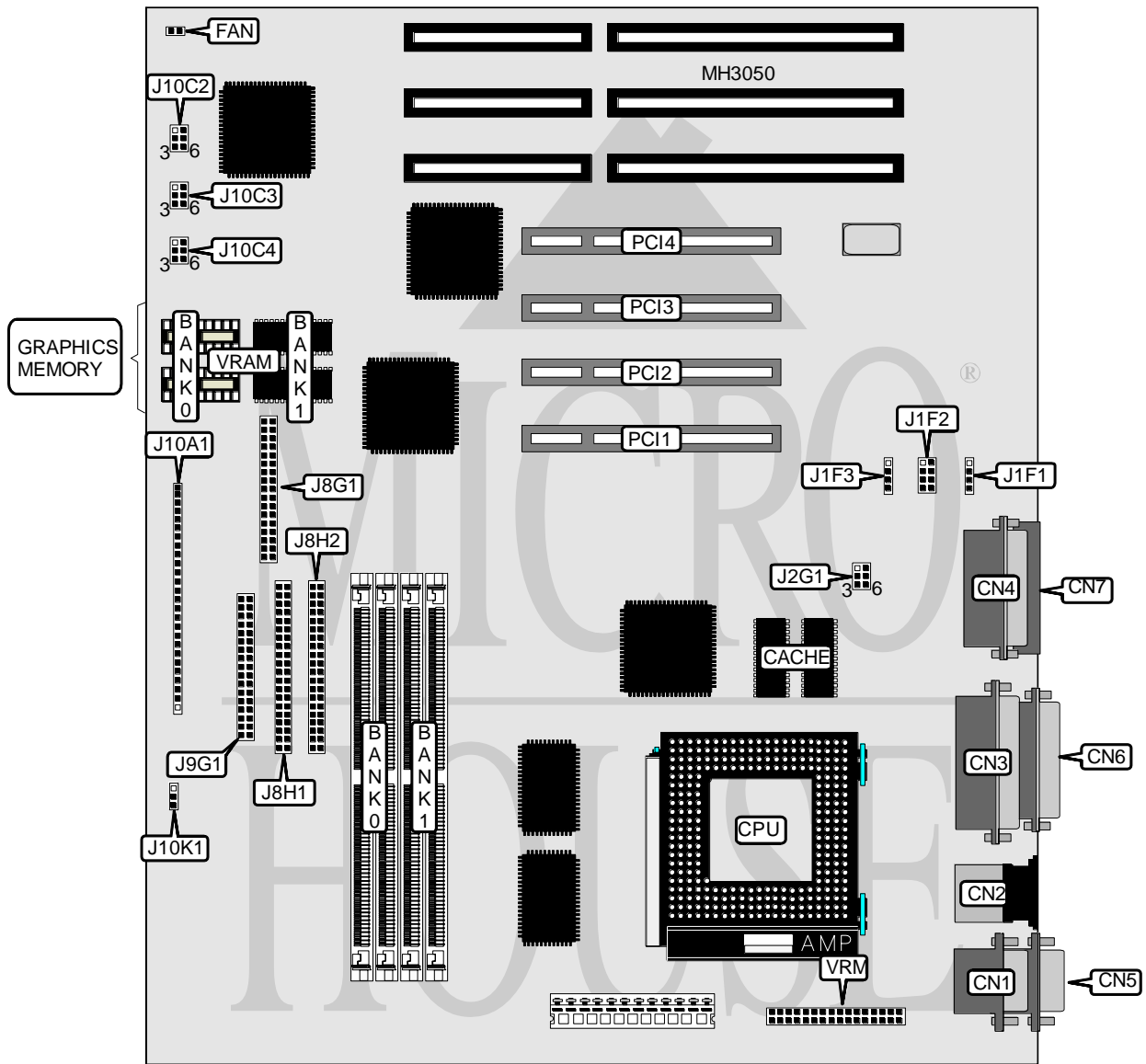


INTEL CORPORATION ADVANCED/ATX

Processor	Pentium
Processor Speed	75/90/100/120/150/166MHz
Chip Set	Intel
Max. Onboard DRAM	128MB
Cache	256/512KB
BIOS	AMI
Dimensions	220mm x 305mm
I/O Options	Parallel port, serial ports (2), game port, VGA port, VGA feature connector, 32-bit PCI slots (4), floppy drive interface, IDE interfaces (2), IR connector, VRM connector
NPU Options	None



Continued on next page. . .

INTEL CORPORATION ADVANCED/ATX

... continued from previous page

CONNECTIONS			
Purpose	Location	Purpose	Location
Serial port 1	CN1	IDE interface	J8H1
PS/2 mouse port	CN2	IDE interface	J8H2
Parallel port	CN3	Floppy drive interface	J9G1
Game port	CN4	Power LED	J10A1 (pins 1 & 2)
Serial port 2	CN5	Green PC connector	J10A1 (pins 3 & 4)
VGA port	CN6	IR connector	J10A1 (pins 6 - 10)
Audio port	CN7	IDE interface LED	J10A1 (pins 12 - 15)
Chassis fan power	FAN	Green PC LED	J10A1 (pins 17 - 19)
CD-ROM connector	J1F1	Reset switch	J10A1 (pins 21 & 22)
Wave table upgrade	J1F2	Speaker	J10A1 (pins 23 - 26)
Audio connector	J1F3	32-bit PCI slots	PCI1 - PCI4
Video feature connector	J8G1	Voltage regulator module	VRM

USER CONFIGURABLE SETTINGS		
Function	Jumper	Position
í CMOS memory normal operation	J10C3	pins 2 & 3 closed
CMOS memory clear	J10C3	pins 1 & 2 closed
Password memory clear	J10C3	pins 4 & 5 closed
í CMOS access enabled	J10C4	pins 5 & 6 closed
CMOS access disabled	J10C4	pins 4 & 5 closed

DRAM CONFIGURATION		
Size	Bank 0	Bank 1
8MB	(2) 1M x 32	NONE
16MB	(2) 1M x 32	(2) 1M x 32
16MB	(2) 2M x 32	NONE
24MB	(2) 1M x 32	(2) 2M x 32
24MB	(2) 2M x 32	(2) 1M x 32
32MB	(2) 2M x 32	(2) 2M x 32
32MB	(2) 4M x 32	NONE
40MB	(2) 1M x 32	(2) 4M x 32
40MB	(2) 4M x 32	(2) 1M x 32
48MB	(2) 2M x 32	(2) 4M x 32
48MB	(2) 4M x 32	(2) 2M x 32
64MB	(2) 4M x 32	(2) 4M x 32
64MB	(2) 8M x 32	NONE
72MB	(2) 1M x 32	(2) 8M x 32
72MB	(2) 8M x 32	(2) 1M x 32
80MB	(2) 2M x 32	(2) 8M x 32
80MB	(2) 8M x 32	(2) 2M x 32
96MB	(2) 4M x 32	(2) 8M x 32
96MB	(2) 8M x 32	(2) 4M x 32
128MB	(2) 8M x 32	(2) 8M x 32

Note: The exact location of Bank 0 and Bank 1 are unidentified.

Continued on next page...

INTEL CORPORATION ADVANCED/ATX

... continued from previous page

CACHE CONFIGURATION	
Size	Bank 0
256KB	(2) 32k X 32

CPU SPEED CONFIGURATION		
Speed	J2G1	J10C4
75MHz	pins 1 & 2, 5 & 6 closed	pins 1 & 2 or 2 & 3 closed
90MHz	pins 1 & 2, 4 & 5 closed	pins 1 & 2 or 2 & 3 closed
100MHz	pins 2 & 3, 5 & 6 closed	pins 1 & 2 or 2 & 3 closed
120Mhz	pins 1 & 2, 4 & 5 closed	pins 1 & 2 or 2 & 3 closed
133Mhz	pins 2 & 3, 5 & 6 closed	pins 1 & 2 or 2 & 3 closed
150Mhz	pins 1 & 2, 4 & 5 closed	pins 1 & 2 or 2 & 3 closed
160Mhz	pins 2 & 3, 5 & 6 closed	pins 1 & 2 or 2 & 3 closed

CPU SPEED RATIO CONFIGURATION	
Setting	J10C2
1.5 x	pins 2 & 3, 4 & 5 closed
2 x	pins 1 & 2, 4 & 5 closed
2.5 x	pins 1 & 2, 5 & 6 closed

CPU VOLTAGE CONFIGURATION	
Voltage	J10K1
3.135 - 3.36v	pins 2 & 3 closed
3.46 - 3.63v	pins 1 & 2 closed

GRAPHIC MEMORY CONFIGURATION		
Size	BANK 0	BANK 1
1MB	(2) 256K x 16	NONE
2MB	(2) 256K x 16	(2) 256K x 16