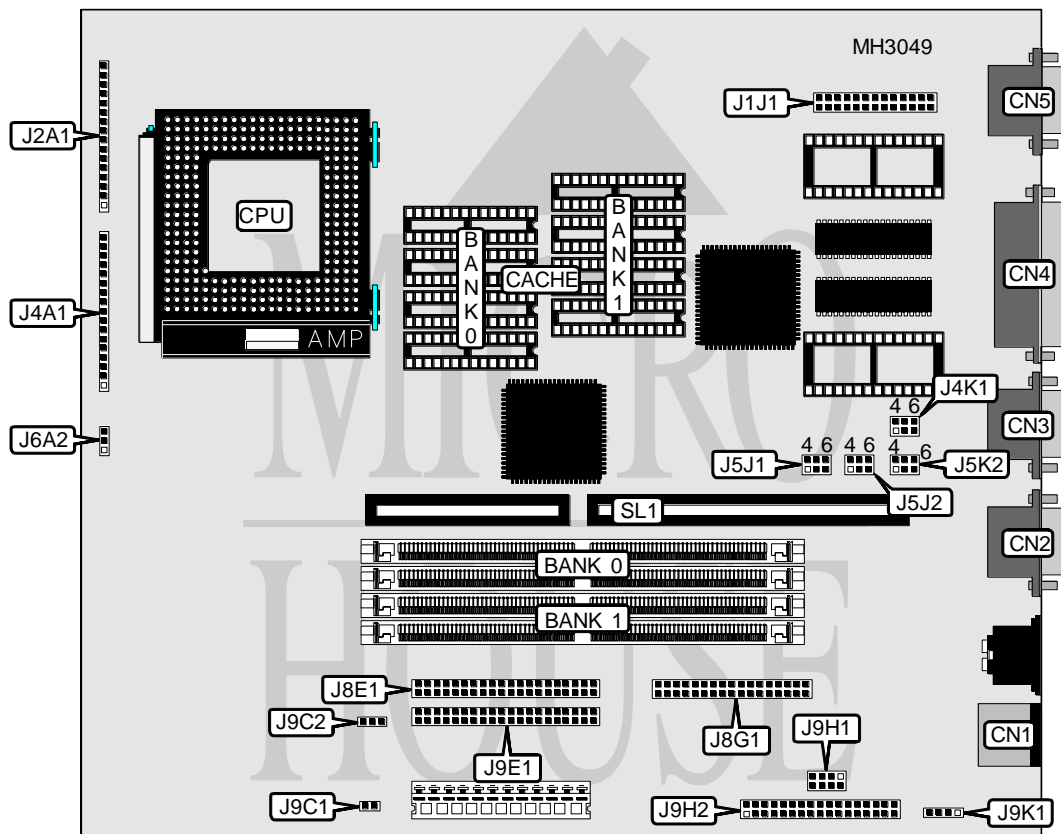


INTEL CORPORATION ADVANCED/MA (MONACO)

Processor	Pentium
Processor Speed	75/90/100/120/133/166MHz
Chip Set	Unidentified
Max. Onboard DRAM	128MB
Cache	256KB
BIOS	Intel
Dimensions	254mm x 218mm
I/O Options	PS/2 mouse port, parallel port, serial ports (2), VGA port, VGA feature connector, IDE interface, Wave table connector, Audio I/O connector, CD ROM connector, Green PC connector, floppy drive interface, Riser slot
NPU Options	None



Continued on next page. . .

INTEL ADVANCED/MA (MONACO)

... continued from previous page

CONNECTIONS			
Purpose	Location	Purpose	Location
PS/2 mouse port	CN1	Chassis fan power	J4A1 (pins 10 - 12)
Serial port 1	CN2	Speaker	J4A1 (pins 16 & 17)
Serial port 2	CN3	IDE interface (secondary)	J8E1
Parallel port	CN4	Floppy drive interface	J8G1
VGA port	CN5	Green PC connector	J9C1
VGA feature connector	J1J1	Power supply control	J9C2
Turbo LED	J2A1 (pins 1 & 2)	IDE interface (primary)	J9E1
IDE interface LED	J2A1 (pins 4 - 7)	Wave table connector	J9H1
Power LED & keylock	J2A1 (pins 9 - 13)	Audio I/O connector	J9H2
Reset switch	J2A1 (pins 15 & 16)	CD-ROM connector	J9K1
Green PC connector	J4A1(pins 1 & 2)	Riser slot	SL1
Green PC LED	J4A1 (pins 4 - 8)		

USER CONFIGURABLE SETTINGS		
Function	Jumper	Position
í CMOS setup access enabled	J4K1	pins 4 & 5 closed
CMOS setup access disabled	J4K1	pins 5 & 6 closed
í ISA clock speed override select 1/3 PCI clock	J4K1	pins 1 & 2 closed
ISA clock speed override select 1/2 PCI clock	J4K1	pins 2 & 3 closed
í Password Enabled	J5K2	pins 4 & 5 closed
Password Disabled/Clear	J5K2	pins 5 & 6 closed
í CMOS memory normal operation	J5K2	pins 1 & 2 closed
CMOS memory clear	J5K2	pins 2 & 3 closed

DRAM CONFIGURATION		
Size	Bank 0	Bank 1
8MB	(2) 1M x 32	NONE
16MB	(2) 1M x 32	(2) 1M x 32
16MB	(2) 2M x 32	NONE
24MB	(2) 1M x 32	(2) 2M x 32
24MB	(2) 2M x 32	(2) 1M x 32
32MB	(2) 2M x 32	(2) 2M x 32
32MB	(2) 4M x 32	NONE
40MB	(2) 1M x 32	(2) 4M x 32
40MB	(2) 4M x 32	(2) 1M x 32
48MB	(2) 2M x 32	(2) 4M x 32
48MB	(2) 4M x 32	(2) 2M x 32
64MB	(2) 4M x 32	(2) 4M x 32
64MB	(2) 8M x 32	NONE
72MB	(2) 1M x 32	(2) 8M x 32
72MB	(2) 8M x 32	(2) 1M x 32
80MB	(2) 2M x 32	(2) 8M x 32
80MB	(2) 8M x 32	(2) 2M x 32

Continued on next page. . .

INTEL ADVANCED/MA (MONACO)

... continued from previous page

DRAM CONFIGURATION (CON'T)		
Size	Bank 0	Bank 1
96MB	(2) 4M x 32	(2) 8M x 32
96MB	(2) 8M x 32	(2) 4M x 32
128MB	(2) 8M x 32	(2) 8M x 32
Note: EDO DRAM supported.		

CACHE CONFIGURATION		
Size	Bank 0	Bank 1
256KB	(4) 32K x 8	(4) 32K x 8

CPU SPEED CONFIGURATION		
Speed	J5J1 pins 1 - 3	J5J1 pins 4 - 6
75MHz	pins 1 & 2 closed	pins 4 & 5 closed
90Mhz	pins 1 & 2 closed	pins 5 & 6 closed
100MHz	pins 2 & 3 closed	pins 4 & 5 closed
120MHz	pins 1 & 2 closed	pins 5 & 6 closed
133MHz	pins 2 & 3 closed	pins 4 & 5 closed

CPU VOLTAGE CONFIGURATION		
Voltage	J6A2	
3.3 v	pins 1 & 2 closed	
5 v	pins 2 & 3 closed	

CPU CLOCK RATIO CONFIGURATION		
Ratio	J5J2 pins 1 - 3	J5J2 pins 4 - 6
2	pins 2 & 3 closed	pins 4 & 5 closed
3/2	pins 1 & 2 closed	pins 4 & 5 closed