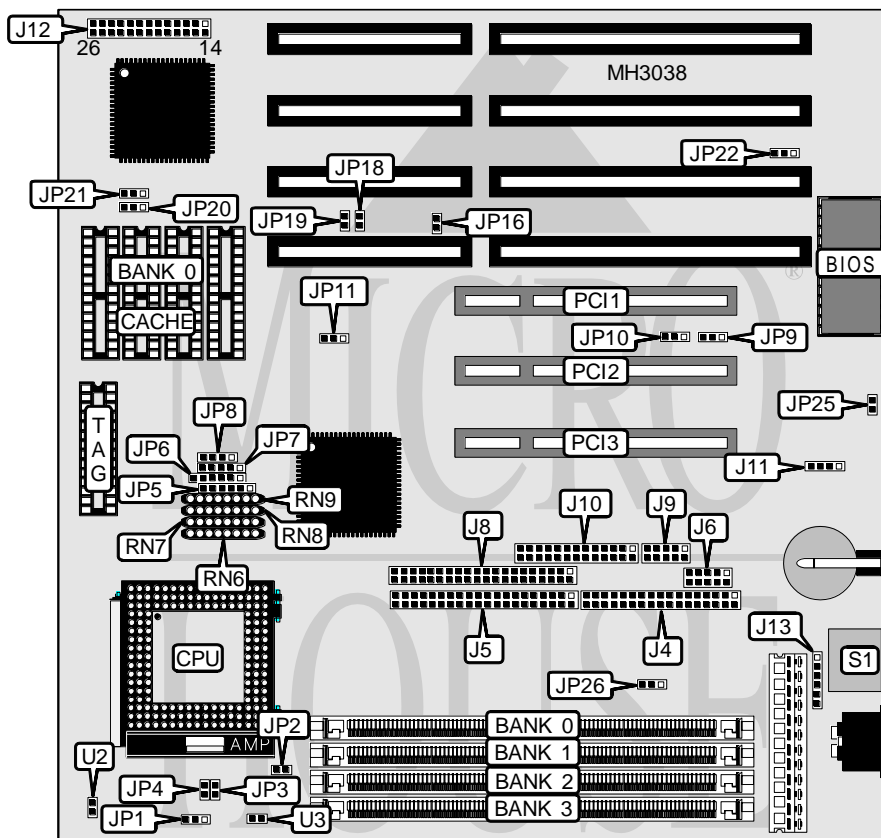


BIOSTAR MICROTECH INTERNATIONAL CORPORATION

MB - 8433AEP

Processor	80486SX/CX486M7/CX486DX/AM486DX/AM486DX PLUS/UMC U5/80486DX/ CX486DX2/AM486DX2/AM486DX2 PLUS/80486DX2/AM486DX4/80486DX4/ SL Pentium Overdrive/Cyrix M1
Processor Speed	25/33/40/66(internal)/75(internal)/80(internal)/100(internal)/120(internal)MHz
Chip Set	AMD
Max. Onboard DRAM	64MB
Cache	128/256/512KB
BIOS	AMI
Dimensions	220mm x 210mm
I/O Options	PS/2 mouse port, parallel port, serial ports (2), 32-bit PCI slots (3), floppy drive interface, IDE interfaces (2)
NPU Options	None



CONNECTIONS			
Purpose	Location	Purpose	Location
Floppy drive interface	J4	Turbo LED	J12 (pins 10 & 11)
IDE interface (primary)	J5	Reset switch	J12 (pins 12 & 13)
Serial port 2	J6	Green PC connector	J12 (pins 17 - 19)
IDE interface (secondary)	J8	IDE interface LED	J12 (pins 20 - 22)
Serial port 1	J9	Turbo switch	J12 (pins 23 & 24)
Parallel port	J10	Chassis fan power	JP2
External battery	J11	32-bit PCI slots	PCI1 - PCI3
Speaker	J12 (pins 1 - 4)	PS/2 mouse port	S1
Power LED & keylock	J12 (pins 5 - 9)		

BIOSTAR MICROTECH INTERNATIONAL CORPORATION

MB - 8433AEP

... continued from previous page

USER CONFIGURABLE SETTINGS		
Function	Jumper	Position
í CMOS memory normal operation	J11	pins 2 & 3 closed
CMOS memory clear	J11	pins 3 & 4 closed
í Factory configured - do not alter	J13	N/A
Flash BIOS voltage select 5v	JP22	pins 2 & 3 closed
Flash BIOS voltage select 12v	JP22	pins 1 & 2 closed
Flash BIOS EPROM	JP22	Open
í Internal battery enabled	JP25	Closed
Internal battery disabled	JP25	Open
í Power good signal detect from power supply	JP26	pins 1 & 2 closed
Power good signal detect from board	JP26	pins 2 & 3 closed
í Factory configured - do not alter	U2	N/A
í Factory configured - do not alter	U3	N/A

DRAM CONFIGURATION				
Size	Bank 0	Bank 1	Bank 2	Bank 3
2MB	(1) 1M x 36	(1) 1M x 36	NONE	NONE
2MB	NONE	NONE	(1) 1M x 36	(1) 1M x 36
2MB	(1) 2M x 36	NONE	NONE	NONE
4MB	(1) 2M x 36	(1) 2M x 36	NONE	NONE
4MB	NONE	NONE	(1) 2M x 36	(1) 2M x 36
4MB	(1) 1M x 36	(1) 1M x 36	(1) 1M x 36	(1) 1M x 36
4MB	(1) 4M x 36	NONE	NONE	NONE
6MB	(1) 2M x 36	(1) 4M x 36	NONE	NONE
6MB	NONE	NONE	(1) 2M x 36	(1) 4M x 36
8MB	(1) 4M x 36	(1) 4M x 36	NONE	NONE
8MB	NONE	NONE	(1) 4M x 36	(1) 4M x 36
8MB	(1) 8M x 36	NONE	NONE	NONE
10MB	(1) 2M x 36	(1) 8M x 36	NONE	NONE
10MB	NONE	NONE	(1) 2M x 36	(1) 8M x 36
12MB	(1) 4M x 36	(1) 8M x 36	NONE	NONE
12MB	NONE	NONE	(1) 4M x 36	(1) 8M x 36
16MB	(1) 4M x 36	(1) 4M x 36	(1) 4M x 36	(1) 4M x 36
16MB	(1) 8M x 36	(1) 8M x 36	NONE	NONE
16MB	NONE	NONE	(1) 8M x 36	(1) 8M x 36
16MB	(1) 16M x 36	NONE	NONE	NONE
18MB	(1) 2M x 36	(1) 16M x 36	NONE	NONE
18MB	NONE	NONE	(1) 2M x 36	(1) 16M x 36
20MB	(1) 4M x 36	(1) 16M x 36	NONE	NONE
20MB	NONE	NONE	(1) 4M x 36	(1) 16M x 36
24MB	(1) 8M x 36	(1) 16M x 36	NONE	NONE
24MB	NONE	NONE	(1) 8M x 36	(1) 16M x 36
32MB	(1) 32M x 36	NONE	NONE	NONE
33MB	(1) 1M x 36	(1) 32M x 36	NONE	NONE
33MB	NONE	NONE	(1) 1M x 36	(1) 32M x 36
34MB	(1) 2M x 36	(1) 32M x 36	NONE	NONE

Continued on next page. . .

BIOSTAR MICROTECH INTERNATIONAL CORPORATION

MB - 8433AEP

... continued from previous page

DRAM CONFIGURATION (CON'T)				
Size	Bank 0	Bank 1	Bank 2	Bank 3
34MB	NONE	NONE	(1) 2M x 36	(1) 32M x 36
36MB	(1) 4M x 36	(1) 32M x 36	NONE	NONE
36MB	NONE	NONE	(1) 4M x 36	(1) 32M x 36
40MB	(1) 8M x 36	(1) 32M x 36	NONE	NONE
40MB	NONE	NONE	(1) 8M x 36	(1) 32M x 36
48MB	(1) 16M x 36	(1) 32M x 36	NONE	NONE
48MB	NONE	NONE	(1) 16M x 36	(1) 32M x 36
64MB	(1) 32M x 36	(1) 32M x 36	NONE	NONE
64MB	NONE	NONE	(1) 32M x 36	(1) 32M x 36

CACHE CONFIGURATION		
Size	Bank 0	TAG
128KB	(4) 32K x 8	(1) 8K x 8
256KB (A)	(4) 64K x 8	(1) 16K x 8
256KB (B)	(4) 64K x 8	(1) 32K x 8
512KB	(4) 64K x 8	(1) 32K x 8

CACHE JUMPER CONFIGURATION		
Size	JP20	JP21
128KB	pins 1 & 2 closed	Open
256KB (A)	Open	pins 1 & 2 closed
256KB (B)	pins 1 & 2 closed	pins 2 & 3 closed
512KB	pins 2 & 3 closed	pins 2 & 3 closed

CPU TYPE CONFIGURATION				
Type	JP5	JP6	JP7	JP8
80486SX	5 & 6	Open	2 & 3, 4 & 5	Open
CX486DX	1 & 2, 4 & 5	Open	1 & 2, 4 & 5	1 & 2
AM486DX	1 & 2, 4 & 5	Open	2 & 3, 4 & 5	Open
AM486DX PLUS WB	1 & 2, 4 & 5	Open	1 & 2	Open
AM486DX PLUS WT	1 & 2, 4 & 5	5 & 6	1 & 2, 4 & 5	Open
U5	Open	Open	4 & 5	Open
80486DX	1 & 2, 4 & 5	Open	2 & 3, 4 & 5	Open
CX486DX2	1 & 2, 4 & 5	1 & 2	1 & 2, 4 & 5	1 & 2, 3 & 4
AM486DX2	1 & 2, 4 & 5	4 & 5	2 & 3, 4 & 5	Open
AM486DX2 PLUS WB	1 & 2, 4 & 5	3 & 4	1 & 2	Open
AM486DX2 PLUS WT	1 & 2, 4 & 5	3 & 4, 5 & 6	1 & 2, 4 & 5	Open
80486DX2	1 & 2, 4 & 5	4 & 5	2 & 3, 4 & 5	Open
CX486DX4	1 & 2, 4 & 5	Open	1 & 2, 4 & 5	1 & 2
AM486DX4	1 & 2, 4 & 5	Open	2 & 3, 4 & 5	Open
AM486DX4 PLUS WB	1 & 2, 4 & 5	Open	1 & 2	Open
AM486DX4 PLUS WT	1 & 2, 4 & 5	5 & 6	1 & 2, 4 & 5	Open
80486DX4	1 & 2, 4 & 5	Open	1 & 2, 4 & 5	Open

Continued on next page. . .

BIOSTAR MICROTECH INTERNATIONAL CORPORATION

MB - 8433AEP

... continued from previous page

CPU TYPE CONFIGURATION (CON'T)				
Type	JP5	JP6	JP7	JP8
P24D	1 & 2, 4 & 5	Open	1 & 2	Open
M1	1 & 2, 4 & 5	Open	1 & 2, 4 & 5	Open

Note: Pins designated should be in the closed position.

CPU TYPE CONFIGURATION (CON'T)				
Type	RN6	RN7	RN8	RN9
80486SX	Not installed	Installed	Not installed	Installed
CX486DX	Not installed	Not installed	Installed	Not installed
AM486DX	Not installed	Installed	Not installed	Installed
AM486DX PLUS WB	Not installed	Installed	Not installed	Installed
AM486DX PLUS WT	Not installed	Installed	Not installed	1 - 4 installed only
U5	Installed	Not installed	Not installed	Not installed
80486DX	Not installed	Installed	Not installed	Installed
CX486DX2	Not installed	Not installed	Installed	Not installed
AM486DX2	Not installed	Installed	Not installed	Installed
AM486DX2 PLUS WB	Not installed	Installed	Not installed	Installed
AM486DX2 PLUS WT	Not installed	Installed	Not installed	1 - 4 installed only
80486DX2	Not installed	Installed	Not installed	Installed
CX486DX4	Not installed	Not installed	Installed	Not installed
AM486DX4	Not installed	Installed	Not installed	Installed
AM486DX4 PLUS WB	Not installed	Installed	Not installed	Installed
AM486DX4 PLUS WT	Not installed	Installed	Not installed	1 - 4 installed only
80486DX4	Not installed	Installed	Not installed	Installed
P24D	Not installed	Installed	Not installed	Installed
M1	Not installed	Installed	Not installed	1 - 4 installed only

Note: Pins designated should be in the closed position.

CPU SPEED CONFIGURATION				
Speed	JP11	JP16	JP18	JP19
25MHz	pins 1 & 2 closed	Open	Open	Open
33MHz	pins 1 & 2 closed	Open	Closed	Closed
40MHz	pins 2 & 3 closed	Closed	Open	Closed
66iMHz	pins 1 & 2 closed	Open	Closed	Closed
75iMHz	pins 1 & 2 closed	Open	Open	Open
80iMHz	pins 2 & 3 closed	Closed	Open	Closed
100iMHz	pins 1 & 2 closed	Open	Closed	Closed
120iMHz	pins 2 & 3 closed	Closed	Open	Closed

CPU VOLTAGE CONFIGURATION			
Voltage	JP1	JP3	JP4
3.45v	pins 2 & 3 closed	Open	Open
4v	pins 1 & 2 closed	Open	Open
5v	pins 2 & 3 closed	Closed	Closed

Continued on next page...

BIOSTAR MICROTECH INTERNATIONAL CORPORATION

MB - 8433AEP

... continued from previous page

DMA CONFIGURATION		
DMA	JP9	JP10
DMA 1	pins 1 & 2 closed	pins 2 & 3 closed
DMA 3	pins 2 & 3 closed	pins 1 & 2 closed