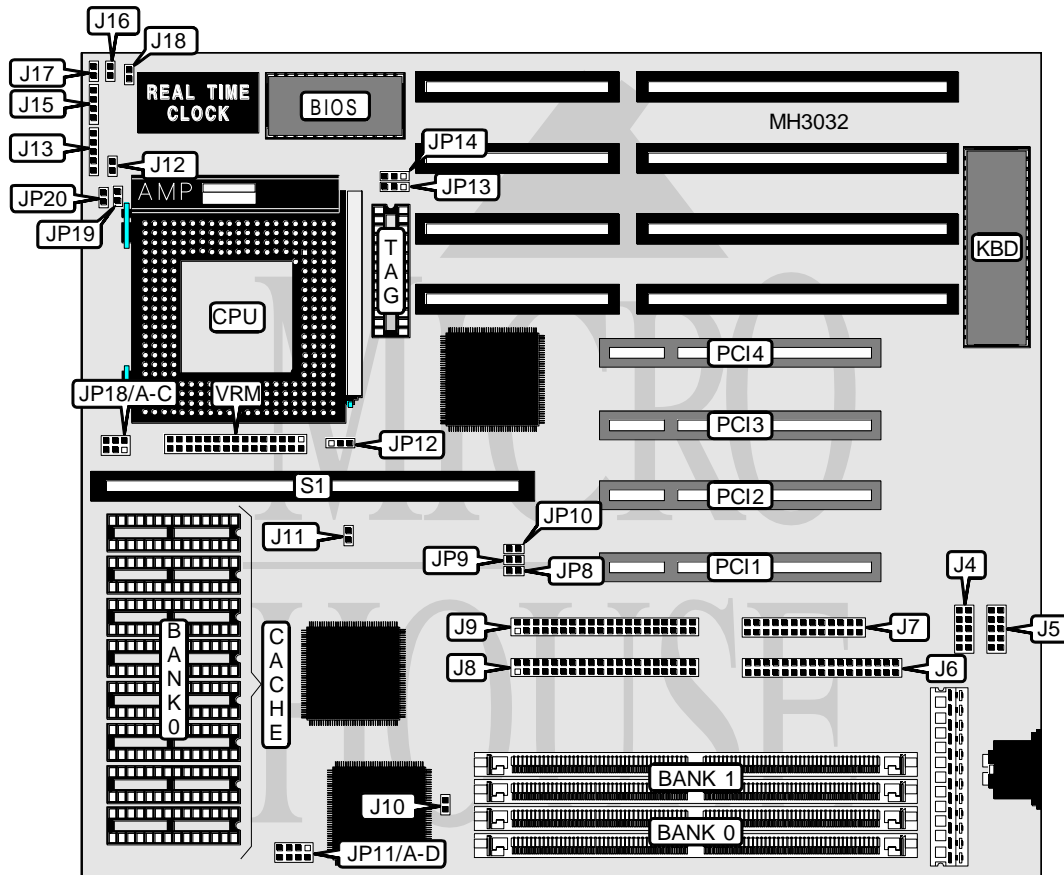


# CHAINTECH COMPUTER COMPANY, LTD.

## 586SEM

<b>Processor</b>	Pentium
<b>Processor Speed</b>	75/90/100/120/133/150MHz
<b>Chip Set</b>	SIS
<b>Max. Onboard DRAM</b>	128MB
<b>Cache</b>	256/512/1024KB
<b>BIOS</b>	Award
<b>Dimensions</b>	275mm x 220mm
<b>I/O Options</b>	Parallel port, serial ports (2), 32-bit PCI slots (4), green PC connector, floppy drive interface, IDE interfaces (2), cache slot, VRM module
<b>NPU Options</b>	None



CONNECTIONS			
Purpose	Location	Purpose	Location
Serial port 1	J4	Power LED & keylock	J13
Serial port 2	J5	Speaker	J15
Floppy drive interface	J6	Reset switch	J16
Parallel port	J7	Turbo LED	J17
IDE interface 1	J8	IDE interface LED	J18
IDE interface 2	J9	32-bit PCI slots	PCI1 - PCI4
Green PC LED	J10	Cache slot	S1
Green PC connector	J11	VRM module	VRM
Turbo switch	J12		

Continued on next page. . .

**CHAINTECH COMPUTER COMPANY,LTD.**  
**5 8 6 S E M**

... continued from previous page

USER CONFIGURABLE SETTINGS		
Function	Jumper	Position
í Turbo switch connector select high speed	J12	Open
Turbo switch connector select low speed	J12	Closed
í PCI system clock ½	JP8	Open
PCI system clock 33MHz and 50MHz	JP8	Closed
í Cache type select Asynchronous	JP12	pins 1 & 2 closed
Cache type select Pipeline-Burst	JP12	pins 2 & 3 closed
í Factory configured - do not alter	VRM	pins 6 & 7, 21 & 22 closed

DRAM CONFIGURATION		
Size	Bank 0	Bank 1
2MB	(2) 256K x 36	NONE
2MB	NONE	(2) 256K x 36
4MB	(2) 256K x 36	(2) 256K x 36
4MB	(2) 512K x 36	NONE
4MB	NONE	(2) 512K x 36
6MB	(2) 256K x 36	(2) 512K x 36
6MB	(2) 512K x 36	(2) 256K x 36
8MB	(2) 1M x 36	NONE
8MB	NONE	(2) 1M x 36
8MB	(2) 512K x 36	(2) 512K x 36
10MB	(2) 256K x 36	(2) 1M x 36
10MB	(2) 1M x 36	(2) 256K x 36
12MB	(2) 1M x 36	(2) 512K x 36
12MB	(2) 512K x 36	(2) 1M x 36
16MB	(2) 1M x 36	(2) 1M x 36
16MB	(2) 2M x 36	NONE
16MB	NONE	(2) 2M x 36
18MB	(2) 256K x 36	(2) 2M x 36
18MB	(2) 2M x 36	(2) 256K x 36
20MB	(2) 512K x 36	(2) 2M x 36
20MB	(2) 2M x 36	(2) 512K x 36
24MB	(2) 1M x 36	(2) 2M x 36
24MB	(2) 2M x 36	(2) 1M x 36
32MB	(2) 4M x 36	NONE
34MB	(2) 4M x 36	(2) 256K x 36
32MB	NONE	(2) 4M x 36
32MB	(2) 2M x 36	(2) 2M x 36
34MB	(2) 256K x 36	(2) 4M x 36
36MB	(2) 4M x 36	(2) 512K x 36
36MB	(2) 512K x 36	(2) 4M x 36
40MB	(2) 1M x 36	(2) 4M x 36
40MB	(2) 4M x 36	(2) 1M x 36
48MB	(2) 4M x 36	(2) 2M x 36
48MB	(2) 2M x 36	(2) 4M x 36

Continued on next page. . .

# CHAINTECH COMPUTER COMPANY,LTD.

## 586SEM

... continued from previous page

DRAM CONFIGURATION (CON'T)		
Size	Bank 0	Bank 1
64MB	(2) 4M x 36	(2) 4M x 36
64MB	(2) 8M x 36	NONE
64MB	NONE	(2) 8M x 36
66MB	(2) 256K x 36	(2) 8M x 36
66MB	(2) 8M x 36	(2) 256K x 36
68MB	(2) 512K x 36	(2) 8M x 36
68MB	(2) 8M x 36	(2) 512K x 36
72MB	(2) 1M x 36	(2) 8M x 36
72MB	(2) 8M x 36	(2) 1M x 36
80MB	(2) 2M x 36	(2) 8M x 36
80MB	(2) 8M x 36	(2) 2M x 36
96MB	(2) 4M x 36	(2) 8M x 36
96MB	(2) 8M x 36	(2) 4M x 36
128MB	(2) 8M x 36	(2) 8M x 36

CACHE CONFIGURATION		
Size	Bank 0	TAG
256KB	(8) 32K x 8	(1) 8K x 8
512KB	(8) 64K x 8	(1) 32K x 8
1MB	(8) 128K x 8	(1) 32K x 8

CACHE JUMPER CONFIGURATION		
Size	JP13	JP14
256KB	pins 1 & 2 closed	pins 1 & 2 closed
512KB	pins 1 & 2 closed	pins 2 & 3 closed
1MB	pins 2 & 3 closed	pins 2 & 3 closed

CPU SPEED CONFIGURATION		
Speed	JP9	JP10
75MHz	Closed	Closed
90MHz	Closed	Open
100MHz	Open	Closed
120MHz	Closed	Open
133MHz	Open	Closed
150MHz	Closed	Open

CPU VOLTAGE CONFIGURATION			
Type	JP18/A	JP18/B	JP18/C
3.3v	Closed	Open	Open
3.4v	Open	Closed	Open
3.5v	Open	Open	Closed

Continued on next page. . .

**CHAINTECH COMPUTER COMPANY,LTD.**  
**5 8 6 S E M***... continued from previous page*

SYSTEM CLOCK CONFIGURATION		
Setting	JP19	JP20
1.5x	Open	Open
2x	Closed	Open
2.5x	Closed	Closed
3x	Open	Closed

CACHE VOLTAGE CONFIGURATION				
Setting	JP11/A	JP11/B	JP11/C	JP11/D
Mix	Closed	Closed	Open	Open
3.3 v	Open	Open	Closed	Closed