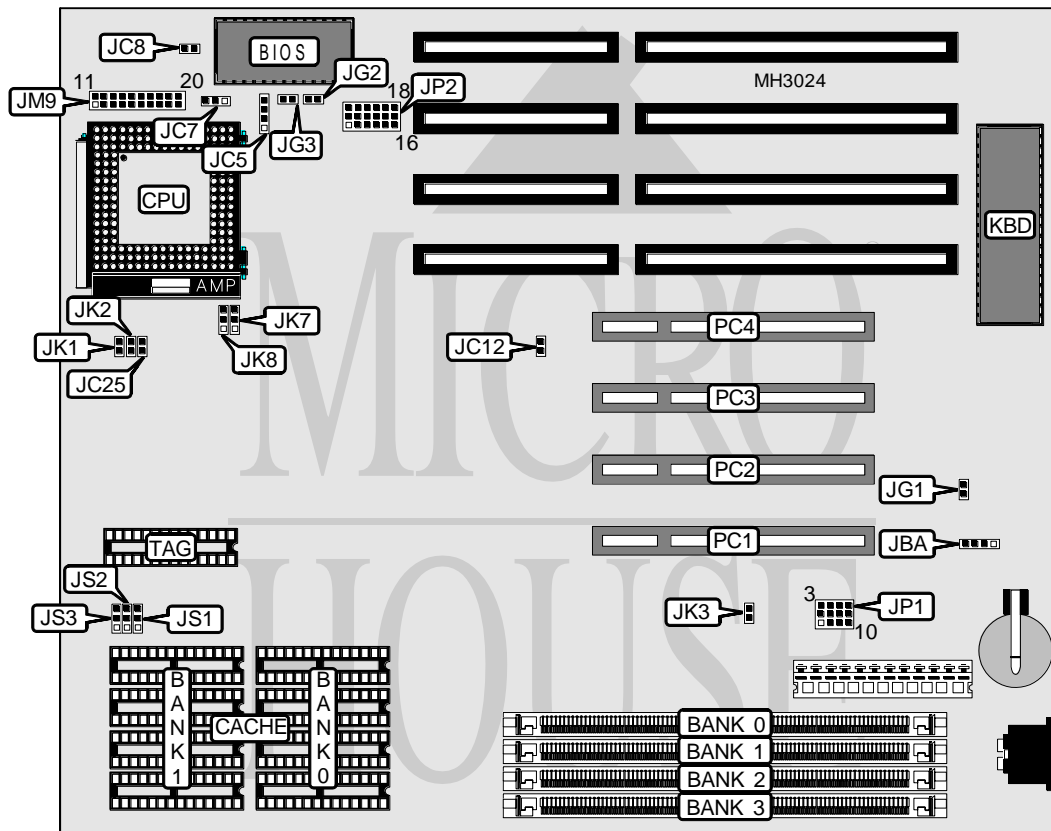


# MICRO-STAR INTERNATIONAL CO., LTD.

## MS - 4135

<b>Processor</b>	AM486SX/80486SX/CX486M7/AM486DX/80486DX/AM486DX2/80486DX2/ 80486DX4/Pentium Overdrive
<b>Processor Speed</b>	25/33/40/50(internal)/66(internal)/75(internal)/100(internal)MHz
<b>Chip Set</b>	Contaq
<b>Max. Onboard DRAM</b>	64MB
<b>Cache</b>	128/256KB
<b>BIOS</b>	AMI/Award
<b>Dimensions</b>	270mm x 220mm
<b>I/O Options</b>	32-bit PCI slots (4), green PC connector
<b>NPU Options</b>	None



CONNECTIONS			
Purpose	Location	Purpose	Location
External battery	JBA	Speaker	JM9 pins 7 - 10
Green PC connector (monitor)	JG1	Turbo LED	JM9 pins 12 & 13
Green PC connector	JG2	Turbo switch	JM9 pins 15 - 17
Green PC LED	JG3	Reset switch	JM9 pins 19 & 20
Power LED & keylock	JM9 pins 1 - 5	32-bit PCI slots	PC1 - PC4

Continued on next page. . .

## MICRO-STAR INTERNATIONAL CO., LTD.

## MS - 4135

... continued from previous page

USER CONFIGURABLE SETTINGS		
Function	Jumper	Position
í Battery type select internal	JBA	pins 2 & 3 closed
Battery type select external	JBA	Closed
CX486M7 3.3v not installed	JC8	Open
CX486M7 3.3v installed	JC8	Closed
í Factory configured - do not alter	JK8	pins 1 & 2 closed

DRAM CONFIGURATION				
Size	Bank 0	Bank 1	Bank 2	Bank 3
1MB	(1) 256K x 36	NONE	NONE	NONE
2MB	(1) 256K x 36	(1) 256K x 36	NONE	NONE
2MB	(1) 512K x 36	NONE	NONE	NONE
3MB	(1) 256K x 36	(1) 256K x 36	(1) 256K x 36	NONE
4MB	(1) 256K x 36	(1) 256K x 36	(1) 256K x 36	(1) 256K x 36
4MB	(1) 1M x 36	NONE	NONE	NONE
4MB	(1) 512K x 36	NONE	(1) 512K x 36	NONE
5MB	(1) 256K x 36	(1) 1M x 36	NONE	NONE
6MB	(1) 1M x 36	(1) 256K x 36	(1) 256K x 36	NONE
7MB	(1) 1M x 36	(1) 256K x 36	(1) 256K x 36	(1) 256K x 36
8MB	(1) 1M x 36	(1) 1M x 36	NONE	NONE
8MB	(1) 2M x 36	NONE	NONE	NONE
9MB	(1) 256K x 36	(1) 1M x 36	(1) 1M x 36	NONE
10MB	(1) 2M x 36	NONE	(1) 512K x 36	NONE
10MB	(1) 512K x 36	NONE	(1) 2M x 36	NONE
10MB	(1) 2M x 36	NONE	(1) 512K x 36	NONE
12MB	(1) 1M x 36	(1) 1M x 36	(1) 1M x 36	NONE
13MB	(1) 256K x 36	(1) 1M x 36	(1) 1M x 36	(1) 1M x 36
16MB	(1) 1M x 36	(1) 1M x 36	(1) 1M x 36	(1) 1M x 36
16MB	(1) 4M x 36	NONE	NONE	NONE
16MB	(1) 2M x 36	NONE	(1) 2M x 36	NONE
16MB	(1) 2M x 36	NONE	(1) 2M x 36	NONE
17MB	(1) 256K x 36	(1) 4M x 36	NONE	NONE
17MB	(1) 4M x 36	(1) 256K x 36	NONE	NONE
18MB	(1) 4M x 36	(1) 256K x 36	(1) 256K x 36	NONE
19MB	(1) 4M x 36	(1) 256K x 36	(1) 256K x 36	(1) 256K x 36
20MB	(1) 1M x 36	(1) 4M x 36	NONE	NONE
20MB	(1) 4M x 36	(1) 1M x 36	NONE	NONE
24MB	(1) 4M x 36	(1) 1M x 36	(1) 1M x 36	NONE
28MB	(1) 4M x 36	(1) 1M x 36	(1) 1M x 36	(1) 1M x 36
32MB	(1) 4M x 36	(1) 4M x 36	NONE	NONE
32MB	(1) 8M x 36	NONE	NONE	NONE
33MB	(1) 256K x 36	(1) 4M x 36	(1) 4M x 36	NONE
34MB	(1) 8M x 36	NONE	(1) 512K x 36	NONE
34MB	(1) 512K x 36	NONE	(1) 8M x 36	NONE
34MB	(1) 8M x 36	NONE	(1) 512K x 36	NONE
36MB	(1) 1M x 36	(1) 4M x 36	(1) 4M x 36	NONE

Continued on next page. . .

## MICRO-STAR INTERNATIONAL CO., LTD.

## MS - 4135

... continued from previous page

DRAM CONFIGURATION (CON'T)				
Size	Bank 0	Bank 1	Bank 2	Bank 3
40MB	(1) 8M x 36	NONE	(1) 2M x 36	NONE
40MB	(1) 2M x 36	NONE	(1) 8M x 36	NONE
40MB	(1) 2M x 36	NONE	(1) 8M x 36	NONE
40MB	(1) 8M x 36	NONE	(1) 2M x 36	NONE
48MB	(1) 4M x 36	(1) 4M x 36	(1) 4M x 36	NONE
49MB	(1) 256K x 36	(1) 4M x 36	(1) 4M x 36	(1) 4M x 36
52MB	(1) 1M x 36	(1) 4M x 36	(1) 4M x 36	(1) 4M x 36
64MB	(1) 4M x 36	(1) 4M x 36	(1) 4M x 36	(1) 4M x 36
64MB	(1) 8M x 36	NONE	(1) 8M x 36	NONE
64MB	(1) 8M x 36	NONE	(1) 8M x 36	NONE

CACHE CONFIGURATION			
Size	Bank 0	Bank 1	TAG
128KB	(4) 32K x 8	NONE	(1) 8K x 8
256KB (A)	(4) 32K x 8	(4) 32K x 8	(1) 32K x 8
256KB (B)	(4) 64K x 8	NONE	(1) 32K x 8

CACHE JUMPER CONFIGURATION			
Size	JS1	JS2	JS3
128KB	pins 1 & 2 closed	pins 1 & 2 closed	pins 1 & 2 closed
256KB (A)	pins 2 & 3 closed	pins 1 & 2 closed	pins 2 & 3 closed
256KB (B)	pins 2 & 3 closed	pins 1 & 2 closed	pins 1 & 2 closed

CPU TYPE CONFIGURATION			
Type	JC5	JC7	JC25
80486SX	pins 2 & 3 closed	Open	Closed
AM486SX	pins 2 & 3 closed	Open	Closed
AM486DX	pins 1 & 2, 3 & 4 closed	pins 2 & 3 closed	Closed
80486DX	pins 1 & 2, 3 & 4 closed	pins 2 & 3 closed	Closed
AM486DX2	pins 1 & 2, 3 & 4 closed	pins 2 & 3 closed	Closed
80486DX2	pins 1 & 2, 3 & 4 closed	pins 2 & 3 closed	Closed
80486DX4	pins 1 & 2, 3 & 4 closed	pins 2 & 3 closed	Open
Pentium Overdrive	pins 1 & 2, 3 & 4 closed	pins 1 & 2 closed	Closed

CPU SPEED CONFIGURATION					
Speed	JC12	JK1	JK2	JK3	JK7
25MHz	Open	Open	Open	Closed	1 & 2
33MHz	Open	Closed	Closed	Open	1 & 2
40MHz	Closed	Open	Closed	Open	2 & 3
50iMHz	Open	Open	Open	Closed	1 & 2
66iMHz	Open	Closed	Closed	Open	1 & 2
75iMHz	Open	Open	Open	Closed	1 & 2
100iMHz	Open	Closed	Closed	Open	1 & 2

Note: Pins designated should be in the closed position.

Continued on next page. . .

MICRO-STAR INTERNATIONAL CO., LTD.  
MS - 4 1 3 5

... continued from previous page

PCI IRQ CONFIGURATION (SLOT 1)			
Card type/slot #	INT/IRQ	JP1	JP2
NCR slot 2	IRQ11/INTA	pins 10 & 11 closed	pins 7 & 8 closed
Adaptec slot 2	IRQ11/INTA	pins 10 & 11 closed	pins 7 & 8 closed
Bus Logic SCSI slot 2	IRQ11/INTA	pins 10 & 11 closed	pins 7 & 8 closed
SCSI slot 1	IRQ9/INTB	pins 8 & 9, 10 & 11 closed	pins 2 & 3, 7 & 8 closed
SCSI slot 4	IRQ9/INTC	pins 5 & 6, 10 & 11 closed	pins 2 & 3, 7 & 8 closed
SCSI slot 1	IRQ9/INTA	pins 1 & 2, 11 & 12 closed	pins 1 & 2, 8 & 9 closed
Edge Trigger slot 1	IRQ14/INTD	pins 2 & 3 closed	pins 16 & 17 closed
Level Trigger slot 1	IRQ14/INTD	pins 2 & 3 closed	pins 17 & 18 closed