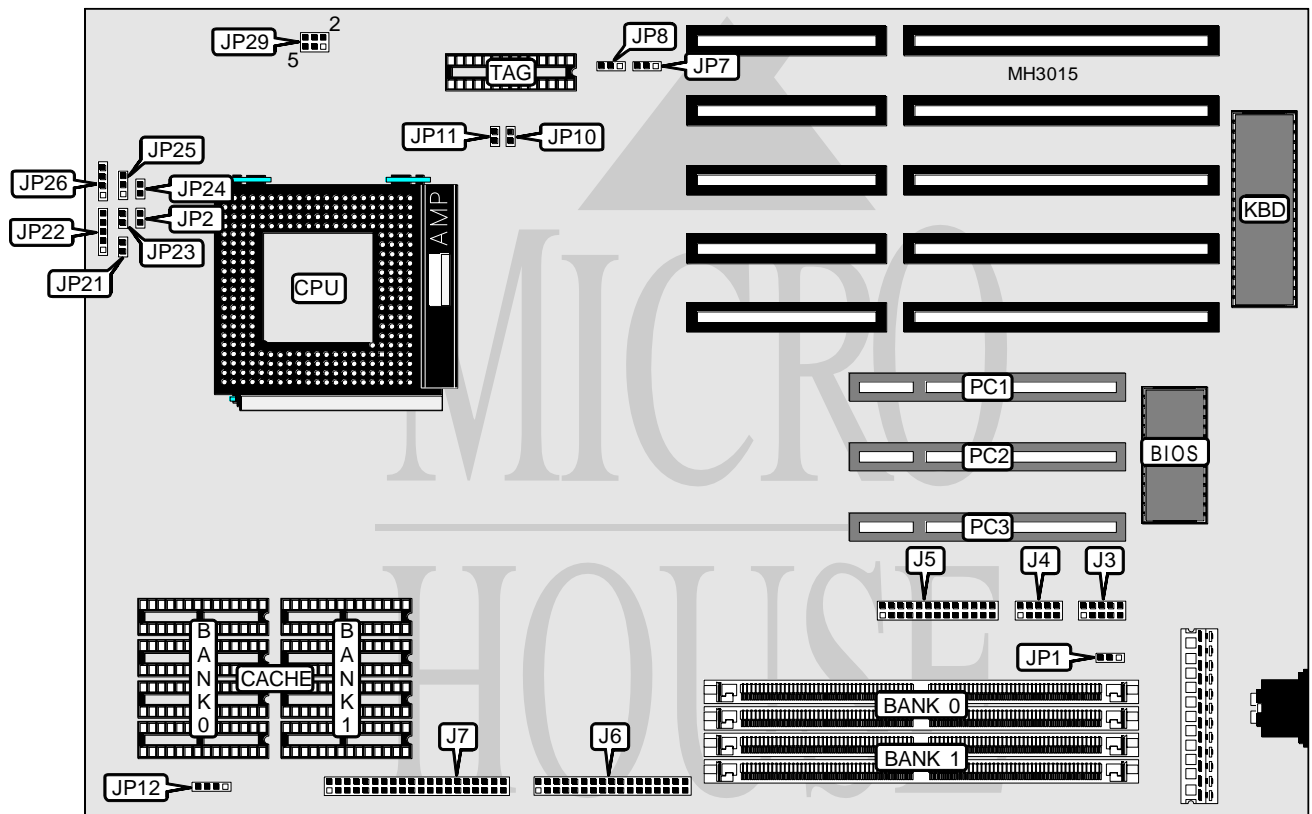


# CHAINTECH COMPUTER COMPANY, LTD.

## 586SLM.3

<b>Processor</b>	Pentium
<b>Processor Speed</b>	75/90/100/120MHz
<b>Chip Set</b>	SIS
<b>Max. Onboard DRAM</b>	128MB
<b>Cache</b>	256/512/1024KB
<b>BIOS</b>	Award
<b>Dimensions</b>	330mm x 220mm
<b>I/O Options</b>	32-bit PCI slots (3), floppy drive interface, green PC connector, IDE interface, parallel port, serial ports (2)
<b>NPU Options</b>	None



CONNECTIONS			
Purpose	Location	Purpose	Location
Serial port 2	J3	Power LED & keylock	JP22
Serial port 1	J4	Turbo LED	JP23
Parallel port	J5	Reset switch	JP24
Floppy drive interface	J6	Turbo switch	JP25
IDE interface	J7	Speaker	JP26
Green PC connector	JP2	32-bit PCI slots	PC1 - PC3
IDE interface LED	JP12		

Continued on next page. . .

**CHAINTECH COMPUTER COMPANY, LTD.**  
**586SLM.3**

... continued from previous page

DRAM CONFIGURATION		
Size	Bank 0	Bank 1
2MB	(2) 256K x 36	NONE
4MB	(2) 256K x 36	(2) 256K x 36
4MB	(2) 512K x 36	NONE
8MB	(2) 512K x 36	(2) 512K x 36
8MB	(2) 1M x 36	NONE
12MB	(2) 512K x 36	(2) 1M x 36
16MB	(2) 1M x 36	(2) 1M x 36
16MB	(2) 2M x 36	NONE
20MB	(2) 512K x 36	(2) 2M x 36
24MB	(2) 2M x 36	(2) 1M x 36
32MB	(2) 2M x 36	(2) 2M x 36
32MB	(2) 4M x 36	NONE
36MB	(2) 512K x 36	(2) 4M x 36
40MB	(2) 1M x 36	(2) 4M x 36
48MB	(2) 2M x 36	(2) 4M x 36
64MB	(2) 4M x 36	(2) 4M x 36
64MB	(2) 8M x 36	NONE
80MB	(2) 2M x 36	(2) 8M x 36
96MB	(2) 8M x 36	(2) 4M x 36
128MB	(2) 8M x 36	(2) 8M x 36

DRAM JUMPER CONFIGURATION	
Type	JP1
Single side in Bank 0	pins 1 & 2 closed
Double side in Bank 0	pins 2 & 3 closed

CACHE CONFIGURATION			
Size	Bank 0	Bank 1	TAG
256KB	(4) 32K x 8	(4) 32K x 8	(1) 8K x 8
512KB	(4) 64K x 8	(4) 64K x 8	(1) 32K x 8
1MB	(4) 128K x 8	(4) 128K x 8	(1) 32K x 8

CACHE JUMPER CONFIGURATION		
Size	JP7	JP8
256KB	pins 1 & 2 closed	pins 1 & 2 closed
512KB	pins 2 & 3 closed	pins 1 & 2 closed
1MB	pins 2 & 3 closed	pins 2 & 3 closed

Continued on next page...

# CHAINTECH COMPUTER COMPANY, LTD.

## 586SLM.3

... continued from previous page

CPU SPEED CONFIGURATION					
Speed	Voltage	JP10	JP11	JP21	JP29
75MHz	3.4v	Open	Open	Open	1 & 2
90MHz	3.4v	Open	Closed	Open	1 & 2
90MHz	3.5v	Open	Closed	Open	3 & 4
100MHz	3.4v	Closed	Closed	Open	1 & 2
100MHz	3.5v	Closed	Closed	Open	3 & 4
120MHz	3.5v	Open	Closed	Closed	3 & 4

Note: Pins designated should be in the closed position.