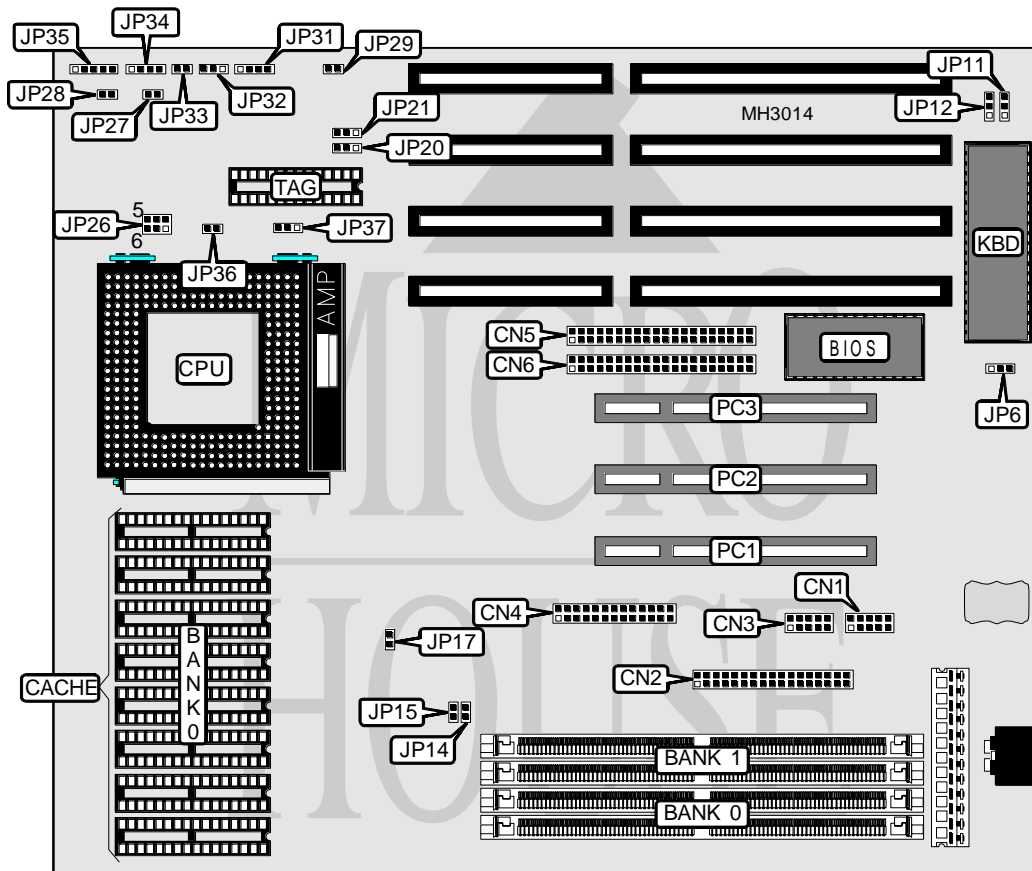


CHAINTECH COMPUTER COMPANY, LTD.

5 8 6 S B M 0 . 1

Processor	Pentium
Processor Speed	75/90/100/120/133MHz
Chip Set	SIS
Max. Onboard DRAM	128MB
Cache	256/512/1024KB
BIOS	Award
Dimensions	260mm x 220mm
I/O Options	32-bit PCI slots (3), floppy drive interface, green PC connector, IDE interfaces (2), parallel port, serial ports (2)
NPU Options	None



CONNECTIONS			
Purpose	Location	Purpose	Location
Serial port 1	CN1	Turbo LED	JP28
Floppy drive interface	CN2	IDE interface LED	JP29
Serial port 2	CN3	External battery	JP31
Parallel port	CN4	Reset switch	JP33
IDE interface 2	CN5	Speaker	JP34
IDE interface 1	CN6	Power LED & keylock	JP35
Green PC connector	JP17	32-bit PCI slots	PC1 - PC3
Turbo switch	JP27		

Continued on next page. . .

CHAINTECH COMPUTER COMPANY, LTD.

586SBM0.1

... continued from previous page

USER CONFIGURABLE SETTINGS		
Function	Jumper	Position
í IDE interface enabled	JP6	pins 1 & 2 closed
IDE interface disabled	JP6	pins 2 & 3 closed
í CMOS memory normal operation	JP32	pins 1 & 2 closed
CMOS memory clear	JP32	pins 2 & 3 closed
í DRAM parity enabled	JP37	pins 1 & 2 closed
dram parity disabled	JP37	pins 2 & 3 closed

DRAM CONFIGURATION		
Size	Bank 0	Bank 1
2MB	(2) 256K x 36	NONE
2MB	NONE	(2) 256K x 36
4MB	(2) 512K x 36	NONE
4MB	NONE	(2) 512K x 36
4MB	(2) 256K x 36	(2) 256K x 36
6MB	(2) 256K x 36	(2) 512K x 36
6MB	(2) 512K x 36	(2) 256K x 36
8MB	(2) 1M x 36	NONE
8MB	NONE	(2) 1M x 36
8MB	(2) 512K x 36	(2) 512K x 36
10MB	(2) 256K x 36	(2) 1M x 36
10MB	(2) 1M x 36	(2) 256K x 36
12MB	(2) 512K x 36	(2) 1M x 36
12MB	(2) 1M x 36	(2) 512K x 36
16MB	(2) 2M x 36	NONE
16MB	NONE	(2) 2M x 36
16MB	(2) 1M x 36	(2) 1M x 36
18MB	(2) 256K x 36	(2) 2M x 36
18MB	(2) 2M x 36	(2) 256K x 36
20MB	(2) 512K x 36	(2) 2M x 36
20MB	(2) 2M x 36	(2) 512K x 36
24MB	(2) 1M x 36	(2) 2M x 36
24MB	(2) 2M x 36	(2) 1M x 36
32MB	(2) 4M x 36	NONE
32MB	NONE	(2) 4M x 36
32MB	(2) 2M x 36	(2) 2M x 36
34MB	(2) 256K x 36	(2) 4M x 36
34MB	(2) 4M x 36	(2) 256K x 36
36MB	(2) 512K x 36	(2) 4M x 36
36MB	(2) 4M x 36	(2) 512K x 36
40MB	(2) 1M x 36	(2) 4M x 36
40MB	(2) 4M x 36	(2) 1M x 36
48MB	(2) 2M x 36	(2) 4M x 36
48MB	(2) 4M x 36	(2) 2M x 36
64MB	(2) 8M x 36	NONE

Continued on next page. . .

CHAINTECH COMPUTER COMPANY, LTD.

586SBM0.1

... continued from previous page

DRAM CONFIGURATION (CON'T)		
Size	Bank 0	Bank 1
64MB	NONE	(2) 8M x 36
64MB	(2) 4M x 36	(2) 4M x 36
66MB	(2) 256K x 36	(2) 8M x 36
66MB	(2) 8M x 36	(2) 256K x 36
68MB	(2) 512K x 36	(2) 8M x 36
68MB	(2) 8M x 36	(2) 512K x 36
72MB	(2) 1M x 36	(2) 8M x 36
72MB	(2) 8M x 36	(2) 1M x 36
80MB	(2) 2M x 36	(2) 8M x 36
80MB	(2) 8M x 36	(2) 2M x 36
96MB	(2) 4M x 36	(2) 8M x 36
96MB	(2) 8M x 36	(2) 4M x 36
128MB	(2) 8M x 36	(2) 8M x 36

CACHE CONFIGURATION		
Size	Bank 0	TAG
256KB	(8) 32K x 8	(1) 8K x 8
512KB	(8) 64K x 8	(1) 32K x 8
1MB	(8) 128K x 8	(1) 32K x 8

CACHE JUMPER CONFIGURATION		
Size	JP20	JP21
256KB	pins 1 & 2 closed	pins 1 & 2 closed
512KB	pins 1 & 2 closed	pins 2 & 3 closed
1MB	pins 2 & 3 closed	pins 2 & 3 closed

CPU SPEED CONFIGURATION					
Speed	Voltage	JP14	JP15	JP26	JP36
75MHz	3.4v	Open	Open	1 & 2	Open
90MHz	3.4v	Open	Closed	1 & 2	Open
90MHz	3.5v	Open	Closed	3 & 4	Open
100MHz	3.4v	Closed	Closed	1 & 2	Open
100MHz	3.5v	Closed	Closed	3 & 4	Open
120MHz	3.5v	Open	Closed	3 & 4	Closed
133MHz	3.5v	Closed	Closed	3 & 4	Closed

Note: Pins designated should be in the closed position.

DMA CONFIGURATION		
DMA	JP11	JP12
DMA 1	pins 1 & 2 closed	pins 1 & 2 closed
DMA 3	pins 2 & 3 closed	pins 2 & 3 closed