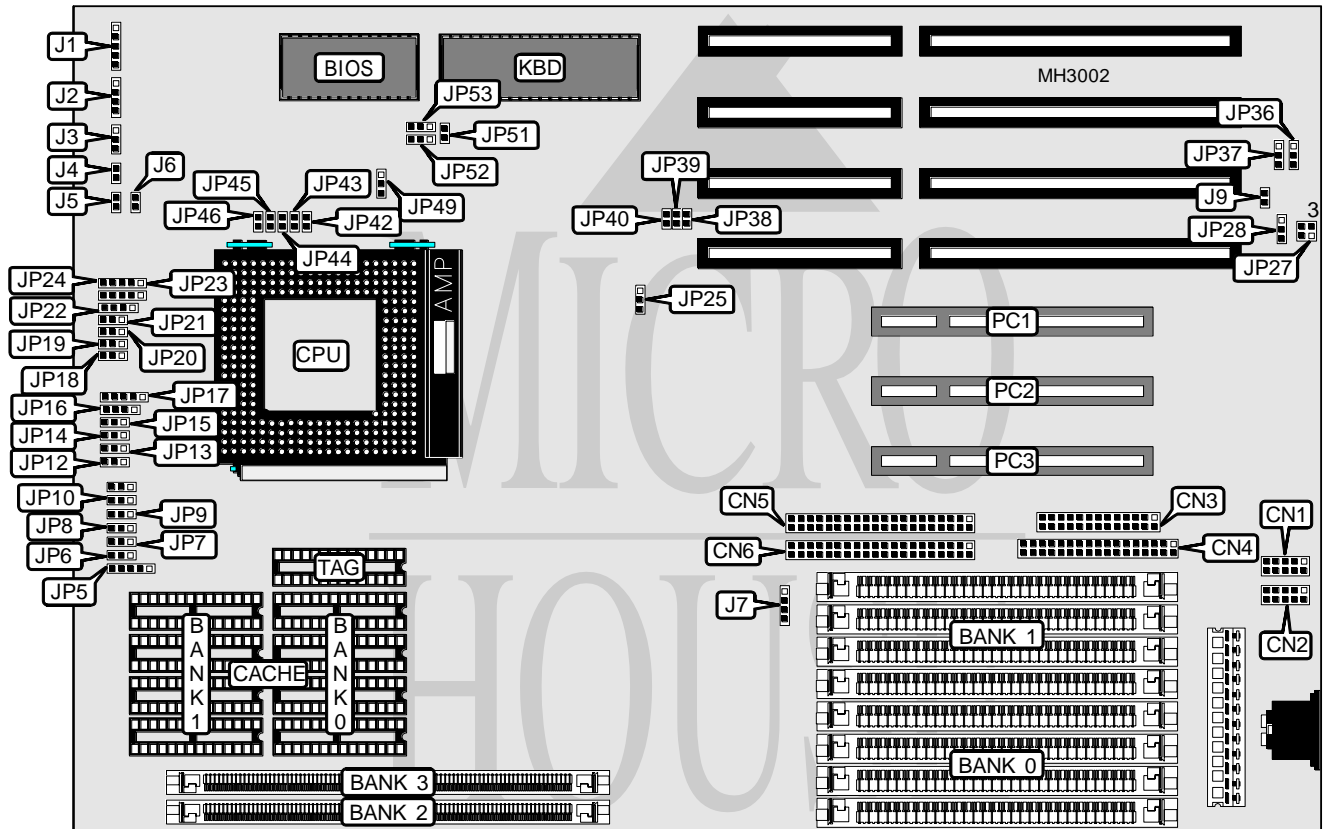


M TECHNOLOGY, INC.

R 418 P C I - 4 8 6

Processor	80486SX/CX486DX/80486DX/AM486DX2/80486DX2/80486DX4/P24D/ Pentium Overdrive
Processor Speed	25/33/40/50(internal)/50/66(internal)/75(internal)/80(internal)/ 100(internal)MHz
Chip Set	Unidentified
Max. Onboard DRAM	256MB
Cache	128/256/512/1024KB
BIOS	Award
Dimensions	330mm x 218mm
I/O Options	Parallel port, serial ports (2), 32-bit PCI slots (3), green PC connector, floppy drive interface, IDE interfaces (2)
NPU Options	None



CONNECTIONS			
Purpose	Location	Purpose	Location
Serial port 2	CN1	Turbo switch	J3
Serial port 1	CN2	Turbo LED	J4
Parallel port	CN3	Reset switch	J5
Floppy drive interface	CN4	Break switch	J6
IDE interface 2	CN5	IDE interface LED	J7
IDE interface 1	CN6	Green PC connector	J9
Power LED & keylock	J1	32-bit PCI slots	PC1 - PC3
Speaker	J2		

Continued on next page . . .

M TECHNOLOGY, INC.
R 4 1 8 P C I - 4 8 6

... continued from previous page

USER CONFIGURABLE SETTINGS		
Function	Jumper	Position
í Serial port 1 IRQ select IRQ4	JP27	pins 1 & 2, 3 & 4 closed
Serial port 2 IRQ select IRQ3	JP27	pins 1 & 2, 3 & 4 closed
í Parallel port IRQ select IRQ7	JP28	pins 2 & 3 closed
Parallel port IRQ select IRQ5	JP28	pins 1 & 2 closed
í CMOS memory normal operation	JP49	pins 1 & 2 closed
CMOS memory clear	JP49	pins 2 & 3 closed
í Monitor type select monochrome	JP51	Open
Monitor type select color	JP51	Closed

DRAM CONFIGURATION				
Size	Bank 0	Bank 1	Bank 2	Bank 3
1MB	(4) 256K x 9	NONE	NONE	NONE
1MB	NONE	NONE	(1) 256K x 36	NONE
2MB	(4) 256K x 9	(4) 256K x 9	NONE	NONE
2MB	NONE	NONE	(1) 256K x 36	(1) 256K x 36
2MB	NONE	NONE	(1) 512K x 36	NONE
3MB	NONE	NONE	(1) 256K x 36	(1) 512K x 36
3MB	NONE	NONE	(1) 512K x 36	(1) 256K x 36
4MB	(4) 1M x 9	NONE	NONE	NONE
4MB	NONE	NONE	(1) 512K x 36	(1) 512K x 36
4MB	NONE	NONE	(1) 1M x 36	NONE
5MB	(4) 256K x 9	(4) 1M x 9	NONE	NONE
5MB	(4) 1M x 9	(4) 256K x 9	NONE	NONE
5MB	(4) 256K x 9	NONE	(1) 1M x 36	NONE
5MB	NONE	NONE	(1) 256K x 36	(1) 1M x 36
5MB	NONE	NONE	(1) 1M x 36	(1) 256K x 36
6MB	(4) 1M x 9	NONE	(1) 256K x 36	(1) 256K x 36
6MB	NONE	NONE	(1) 512K x 36	(1) 1M x 36
6MB	NONE	NONE	(1) 1M x 36	(1) 512K x 36
7MB	(4) 256K x 9	(4) 256K x 9	(1) 1M x 36	(1) 256K x 36
8MB	(4) 1M x 9	(4) 1M x 9	NONE	NONE
8MB	(4) 1M x 9	(4) 256K x 9	(1) 256K x 36	(1) 512K x 36
8MB	NONE	NONE	(1) 1M x 36	(1) 1M x 36
8MB	NONE	NONE	(1) 2M x 36	NONE
9MB	NONE	NONE	(1) 256K x 36	(1) 2M x 36
9MB	NONE	NONE	(1) 2M x 36	(1) 256K x 36
10MB	NONE	NONE	(1) 512K x 36	(1) 2M x 36
10MB	NONE	NONE	(1) 2M x 36	(1) 512K x 36
11MB	(4) 256K x 9	(4) 1M x 9	(1) 1M x 36	(1) 512K x 36
12MB	NONE	NONE	(1) 1M x 36	(1) 2M x 36
12MB	NONE	NONE	(1) 2M x 36	(1) 1M x 36
13MB	(4) 1M x 9	(4) 1M x 9	(1) 256K x 36	(1) 1M x 36
16MB	(4) 4M x 9	NONE	NONE	NONE
16MB	NONE	NONE	(1) 2M x 36	(1) 2M x 36

Continued on next page...

M TECHNOLOGY, INC.

R 4 1 8 P C I - 4 8 6

... continued from previous page

DRAM CONFIGURATION (CON'T)				
Size	Bank 0	Bank 1	Bank 2	Bank 3
16MB	NONE	NONE	(1) 4M x 36	NONE
17MB	(4) 256K x 9	(4) 4M x 9	NONE	NONE
17MB	(4) 4M x 9	(4) 256K x 9	NONE	NONE
17MB	NONE	NONE	(1) 256K x 36	(1) 4M x 36
17MB	NONE	NONE	(1) 4M x 36	(1) 256K x 36
18MB	NONE	NONE	(1) 512K x 36	(1) 4M x 36
18MB	NONE	NONE	(1) 4M x 36	(1) 512K x 36
20MB	(4) 1M x 9	(4) 4M x 9	NONE	NONE
20MB	(4) 4M x 9	(4) 1M x 9	NONE	NONE
20MB	NONE	NONE	(1) 1M x 36	(1) 4M x 36
20MB	NONE	NONE	(1) 4M x 36	(1) 1M x 36
22MB	(4) 4M x 9	(4) 1M x 9	(1) 512K x 36	NONE
24MB	NONE	NONE	(1) 2M x 36	(1) 4M x 36
24MB	NONE	NONE	(1) 4M x 36	(1) 2M x 36
25MB	(4) 256K x 9	(4) 4M x 9	(1) 1M x 36	(1) 1M x 36
25MB	(4) 256K x 9	NONE	(1) 4M x 36	(1) 2M x 36
26MB	(4) 4M x 9	NONE	(1) 2M x 36	(1) 512K x 36
28MB	(4) 1M x 9	(4) 4M x 9	(1) 2M x 36	NONE
29MB	(4) 1M x 9	(4) 4M x 9	(1) 256K x 36	(1) 2M x 36
29MB	(4) 4M x 9	(4) 256K x 9	(1) 2M x 36	(1) 1M x 36
32MB	(4) 4M x 9	(4) 4M x 9	NONE	NONE
32MB	NONE	NONE	(1) 4M x 36	(1) 4M x 36
32MB	NONE	NONE	(1) 8M x 36	NONE
33MB	NONE	NONE	(1) 256K x 36	(1) 8M x 36
33MB	NONE	NONE	(1) 8M x 36	(1) 256K x 36
34MB	(4) 256K x 9	(4) 256K x 9	(1) 4M x 36	(1) 4M x 36
34MB	NONE	NONE	(1) 512K x 36	(1) 8M x 36
34MB	NONE	NONE	(1) 8M x 36	(1) 512K x 36
35MB	(4) 4M x 9	(4) 4M x 9	(1) 512K x 36	(1) 256K x 36
36MB	(4) 4M x 9	(4) 1M x 9	(1) 2M x 36	(1) 2M x 36
36MB	NONE	NONE	(1) 1M x 36	(1) 8M x 36
36MB	NONE	NONE	(1) 8M x 36	(1) 1M x 36
37MB	(4) 1M x 9	NONE	(1) 8M x 36	(1) 256K x 36
39MB	(4) 1M x 9	(4) 256K x 9	(1) 8M x 36	(1) 512K x 36
40MB	NONE	NONE	(1) 2M x 36	(1) 8M x 36
40MB	NONE	NONE	(1) 8M x 36	(1) 2M x 36
41MB	(4) 1M x 9	(4) 256K x 9	(1) 1M x 36	(1) 8M x 36
44MB	(4) 1M x 9	(4) 1M x 9	(1) 8M x 36	(1) 1M x 36
48MB	NONE	NONE	(1) 4M x 36	(1) 8M x 36
48MB	NONE	NONE	(1) 8M x 36	(1) 4M x 36
49MB	(4) 4M x 9	NONE	(1) 256K x 36	(1) 8M x 36
53MB	(4) 256K x 9	(4) 1M x 9	(1) 4M x 36	(1) 8M x 36
56MB	(4) 4M x 9	(4) 4M x 9	(1) 2M x 36	(1) 4M x 36
60MB	(4) 1M x 9	(4) 4M x 9	(1) 8M x 36	(1) 2M x 36

Continued on next page...

M TECHNOLOGY, INC.
R 4 1 8 P C I - 4 8 6

... continued from previous page

DRAM CONFIGURATION (CON'T)				
Size	Bank 0	Bank 1	Bank 2	Bank 3
64MB	(4) 16M x 9	NONE	NONE	NONE
64MB	NONE	NONE	(1) 8M x 36	(1) 8M x 36
64MB	NONE	NONE	(1) 16M x 36	NONE
65MB	(4) 256K x 9	(4) 16M x 9	NONE	NONE
65MB	(4) 16M x 9	(4) 256K x 9	NONE	NONE
65MB	NONE	NONE	(1) 256K x 36	(1) 16M x 36
65MB	NONE	NONE	(1) 16M x 36	(1) 256K x 36
66MB	(4) 256K x 9	(4) 16M x 9	(1) 256K x 36	NONE
66MB	NONE	NONE	(1) 512K x 36	(1) 16M x 36
66MB	NONE	NONE	(1) 16M x 36	(1) 512K x 36
68MB	(4) 1M x 9	(4) 16M x 9	NONE	NONE
68MB	(4) 16M x 9	(4) 1M x 9	NONE	NONE
68MB	NONE	NONE	(1) 1M x 36	(1) 16M x 36
68MB	NONE	NONE	(1) 16M x 36	(1) 1M x 36
70MB	(4) 16M x 9	NONE	(1) 512K x 36	(1) 1M x 36
72MB	NONE	NONE	(1) 2M x 36	(1) 16M x 36
72MB	NONE	NONE	(1) 16M x 36	(1) 2M x 36
75MB	(4) 16M x 9	(4) 256K x 9	(1) 512K x 36	(1) 2M x 36
76MB	(4) 1M x 9	(4) 1M x 9	(1) 1M x 36	(1) 16M x 36
77MB	(4) 1M x 9	(4) 16M x 9	(1) 2M x 36	(1) 256K x 36
80MB	(4) 4M x 9	(4) 16M x 9	NONE	NONE
80MB	(4) 16M x 9	(4) 4M x 9	NONE	NONE
80MB	(4) 4M x 9	NONE	(1) 8M x 36	(1) 8M x 36
80MB	NONE	NONE	(1) 4M x 36	(1) 16M x 36
80MB	NONE	NONE	(1) 16M x 36	(1) 4M x 36
81MB	(4) 16M x 9	(4) 256K x 9	(1) 4M x 36	NONE
82MB	(4) 4M x 9	(4) 256K x 9	(1) 256K x 36	(1) 16M x 36
84MB	(4) 4M x 9	(4) 16M x 9	(1) 512K x 36	(1) 512K x 36
85MB	(4) 1M x 9	(4) 16M x 9	(1) 256K x 36	(1) 4M x 36
85MB	(4) 16M x 9	(4) 1M x 9	(1) 4M x 36	(1) 256K x 36
86MB	(4) 16M x 9	(4) 1M x 9	(1) 512K x 36	(1) 4M x 36
96MB	NONE	NONE	(1) 8M x 36	(1) 16M x 36
96MB	NONE	NONE	(1) 16M x 36	(1) 8M x 36
97MB	(4) 256K x 9	(4) 16M x 9	(1) 8M x 36	NONE
97MB	(4) 4M x 9	(4) 4M x 9	(1) 16M x 36	(1) 256K x 36
98MB	(4) 16M x 9	(4) 4M x 9	(1) 4M x 36	(1) 512K x 36
113MB	(4) 4M x 9	(4) 256K x 9	(1) 8M x 36	(1) 16M x 36
114MB	(4) 16M x 9	(4) 4M x 9	(1) 512K x 36	(1) 8M x 36
120MB	(4) 4M x 9	(4) 16M x 9	(1) 2M x 36	(1) 8M x 36
128MB	(4) 16M x 9	(4) 16M x 9	NONE	NONE
128MB	NONE	NONE	(1) 16M x 36	(1) 16M x 36
132MB	(4) 16M x 9	NONE	(1) 16M x 36	(1) 1M x 36
136MB	(4) 16M x 9	NONE	(1) 2M x 36	(1) 16M x 36

Continued on next page. . .

M TECHNOLOGY, INC.

R 418 P C I - 4 8 6

... continued from previous page

DRAM CONFIGURATION (CON'T)				
Size	Bank 0	Bank 1	Bank 2	Bank 3
137MB	(4) 16M x 9	(4) 256K x 9	(1) 16M x 36	(1) 2M x 36
148MB	(4) 16M x 9	(4) 16M x 9	(1) 4M x 36	(1) 1M x 36
148MB	(4) 16M x 9	(4) 1M x 9	(1) 16M x 36	(1) 4M x 36
176MB	(4) 16M x 9	(4) 4M x 9	(1) 16M x 36	(1) 8M x 36
194MB	(4) 16M x 9	(4) 16M x 9	(1) 512K x 36	(1) 16M x 36
256MB	(4) 16M x 9	(4) 16M x 9	(1) 16M x 36	(1) 16M x 36

CACHE CONFIGURATION			
Size	Bank 0	Bank 1	TAG
128KB	(4) 32K x 8	NONE	(1) 8K x 8
256KB (A)	(4) 32K x 8	(4) 32K x 8	(1) 32K x 8
256KB (B)	(4) 64K x 8	NONE	(1) 32K x 8
512KB (A)	(4) 64K x 8	(4) 64K x 8	(1) 32K x 8
512KB (B)	(4) 128K x 8	NONE	(1) 32K x 8
1MB	(4) 128K x 8	(4) 128K x 8	(1) 64K x 8

CACHE JUMPER CONFIGURATION						
Size	JP5	JP6	JP7	JP8	JP9	JP10
128KB	1 & 2, 4 & 5	1 & 2	1 & 2	Open	1 & 2	1 & 2
256KB (A)	2 & 3, 4 & 5	2 & 3	2 & 3	Open	1 & 2	2 & 3
256KB (B)	1 & 2, 3 & 4	1 & 2	1 & 2	Open	1 & 2	2 & 3
512KB (A)	2 & 3, 4 & 5	2 & 3	2 & 3	Open	2 & 3	2 & 3
512KB (B)	1 & 2, 4 & 5	1 & 2	1 & 2	Open	2 & 3	2 & 3
1MB	2 & 3, 4 & 5	2 & 3	2 & 3	Open	2 & 3	2 & 3

Note: Pins designated should be in the closed position.

CPU TYPE CONFIGURATION					
Type	JP12	JP13	JP14	JP15	JP16
80486SX	2 & 3	Open	2 & 3	Open	3 & 4
CX486DX	2 & 3	2 & 3	1 & 2	2 & 3	2 & 3
80486DX	2 & 3	2 & 3	2 & 3	Open	3 & 4
AM486DX2	2 & 3	2 & 3	2 & 3	Open	3 & 4
80486DX2	2 & 3	2 & 3	2 & 3	Open	3 & 4
80486DX4	2 & 3	2 & 3	2 & 3	Open	3 & 4
P24D	1 & 2	2 & 3	2 & 3	Open	1 & 2, 3 & 4
P24T	1 & 2	1 & 2	2 & 3	1 & 2	3 & 4

Note: Pins designated should be in the closed position.

Continued on next page...

M TECHNOLOGY, INC.

R 418 PCI-486

... continued from previous page

CPU TYPE CONFIGURATION (CON'T)

Type	JP17	JP18	JP19	JP20
80486SX	pins 3 & 4 closed	Open	Open	Open
CX486DX	pins 2 & 3 closed	Open	Open	Open
80486DX	pins 3 & 4 closed	Open	Open	Open
AM486DX2	pins 3 & 4 closed	2 & 3	Open	Open
80486DX2	pins 3 & 4 closed	Open	Open	Open
80486DX4	pins 3 & 4 closed	Open	Open	Open
P24D	pins 1 & 2 closed	pins 1 & 2 closed	Open	pins 1 & 2 closed
P24T	pins 1 & 2 closed	Open	Open	Open

CPU TYPE CONFIGURATION (CON'T)

Type	JP21	JP22	JP23	JP24
80486SX	Open	pins 2 & 3 closed	pins 4 & 5 closed	Open
CX486DX	Open	pins 1 & 2, 3 & 4 closed	pins 2 & 3 closed	Open
80486DX	Open	pins 1 & 2, 3 & 4 closed	pins 4 & 5 closed	Open
AM486DX2	Open	pins 1 & 2, 3 & 4 closed	pins 4 & 5 closed	Open
80486DX2	Open	pins 1 & 2, 3 & 4 closed	pins 4 & 5 closed	Open
80486DX4	Open	pins 1 & 2, 3 & 4 closed	pins 4 & 5 closed	Open
P24D	Open	pins 1 & 2, 3 & 4 closed	pins 4 & 5 closed	pins 2 & 3 closed
P24T	pins 1 & 2 closed	pins 1 & 2, 3 & 4 closed	pins 1 & 2 closed	Open

CPU SPEED CONFIGURATION

Speed	JP25	JP38	JP39	JP40
25MHz	pins 1 & 2 closed	Open	Open	Open
33MHz	pins 1 & 2 closed	Closed	Closed	Open
40MHz	pins 1 & 2 closed	Closed	Open	Open
50iMHz	pins 1 & 2 closed	Open	Open	Open
50MHz	pins 2 & 3 closed	Open	Closed	Open
66iMHz	pins 1 & 2 closed	Closed	Closed	Open
75iMHz	pins 1 & 2 closed	Open	Open	Open
80iMHz	pins 1 & 2 closed	Closed	Open	Open
100iMHz	pins 1 & 2 closed	Closed	Closed	Open

CPU VOLTAGE CONFIGURATION

Voltage	JP42	JP43	JP44	JP45	JP46
3.3v	Closed	Open	Open	Open	Open
3.45v	Open	Closed	Open	Open	Open
3.6v	Open	Open	Closed	Open	Open
3.75v	Open	Open	Open	Closed	Open
3.9v	Open	Open	Open	Open	Closed

BIOS CONFIGURATION

Type	JP52	JP53
EEPROM	pins 2 & 3 closed	pins 2 & 3 closed
12v flash	pins 1 & 2 closed	pins 1 & 2 closed

Continued on next page. . .

M TECHNOLOGY, INC.
R 4 1 8 P C I - 4 8 6

... continued from previous page

DMA CONFIGURATION		
DMA	JP36	JP37
DMA 1	pins 2 & 3 closed	pins 2 & 3 closed
DMA 3	pins 1 & 2 closed	pins 1 & 2 closed