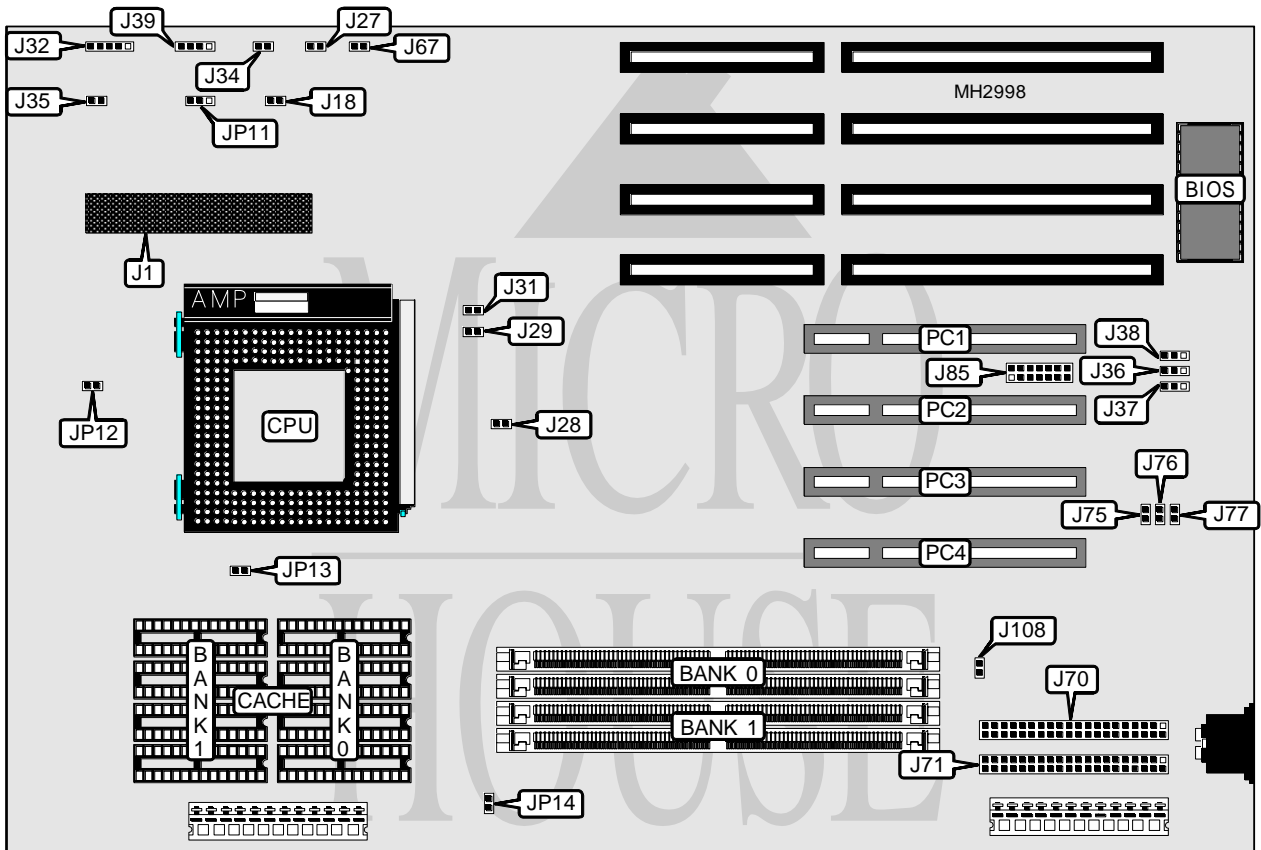


SUPER MICRO P55CWA (REV. 1.3)

Processor	Pentium
Processor Speed	75/90/100/120/133MHz
Chip Set	Intel
Max. Onboard DRAM	128MB
Cache	256/512KB
BIOS	AMI
Dimensions	330mm x 218mm
I/O Options	VRM module connector, IDE interfaces (2), Legacy connector, 32-bit PCI slots (4)
NPU Options	None



CONNECTIONS			
Purpose	Location	Purpose	Location
VRM module connector	J1	Speaker	J39
Chassis fan power	J18	IDE interface 1	J70
Power LED & keylock	J32	IDE interface 2	J71
IDE interface LED	J34	Legacy connector	J85
Reset switch	J35	32-bit PCI slots	PC1 - PC4

Note: The size of the VRM module is unidentified.

Continued on next page. . .

SUPER MICRO

P55CWA (REV. 1.3)

... continued from previous page

USER CONFIGURABLE SETTINGS		
Function	Jumper	Position
í Factory configured - do not alter	J28	Closed
í Factory configured - do not alter	J36	pins 1 & 2 closed
í Factory configured - do not alter	J37	pins 1 & 2 closed
í Factory configured - do not alter	J38	pins 2 & 3 closed
í Factory configured - do not alter	J67	Open
í Factory configured - do not alter	J75	Open
í Factory configured - do not alter	J76	Open
í Factory configured - do not alter	J77	Open
í Factory configured - do not alter	J108	Open
í Factory configured - do not alter	JP12	Closed
í Factory configured - do not alter	JP13	Closed
í Factory configured - do not alter	JP14	Closed

DRAM CONFIGURATION		
Size	Bank 0	Bank 1
8MB	(2) 1M x 36	NONE
16MB	(2) 2M x 36	NONE
16MB	(2) 1M x 36	(2) 1M x 36
24MB	(2) 1M x 36	(2) 2M x 36
32MB	(2) 4M x 36	NONE
32MB	(2) 2M x 36	(2) 2M x 36
40MB	(2) 1M x 36	(2) 4M x 36
48MB	(2) 2M x 36	(2) 4M x 36
64MB	(2) 8M x 36	NONE
64MB	(2) 4M x 36	(2) 4M x 36
72MB	(2) 1M x 36	(2) 8M x 36
80MB	(2) 2M x 36	(2) 8M x 36
96MB	(2) 4M x 36	(2) 8M x 36
128MB	(2) 8M x 36	(2) 8M x 36

CACHE CONFIGURATION		
Size	Bank 0	Bank 1
256KB	(4) 32K x 8	(4) 32K x 8
512KB	(4) 64K x 8	(4) 64K x 8

CPU SPEED CONFIGURATION			
Speed	J27	J29	J31
75MHz	Open	Closed	Closed
90MHz	Open	Closed	Open
100MHz	Open	Open	Closed
120MHz	Closed	Closed	Open
133MHz	Closed	Open	Closed

Continued on next page. ...

SUPER MICRO
P55CWA (REV. 1.3)

... continued from previous page

CPU VOLTAGE CONFIGURATION	
Voltage	JP11
3.3v	pins 2 & 3 closed
3.4v	Open
3.5v	pins 1 & 2 closed