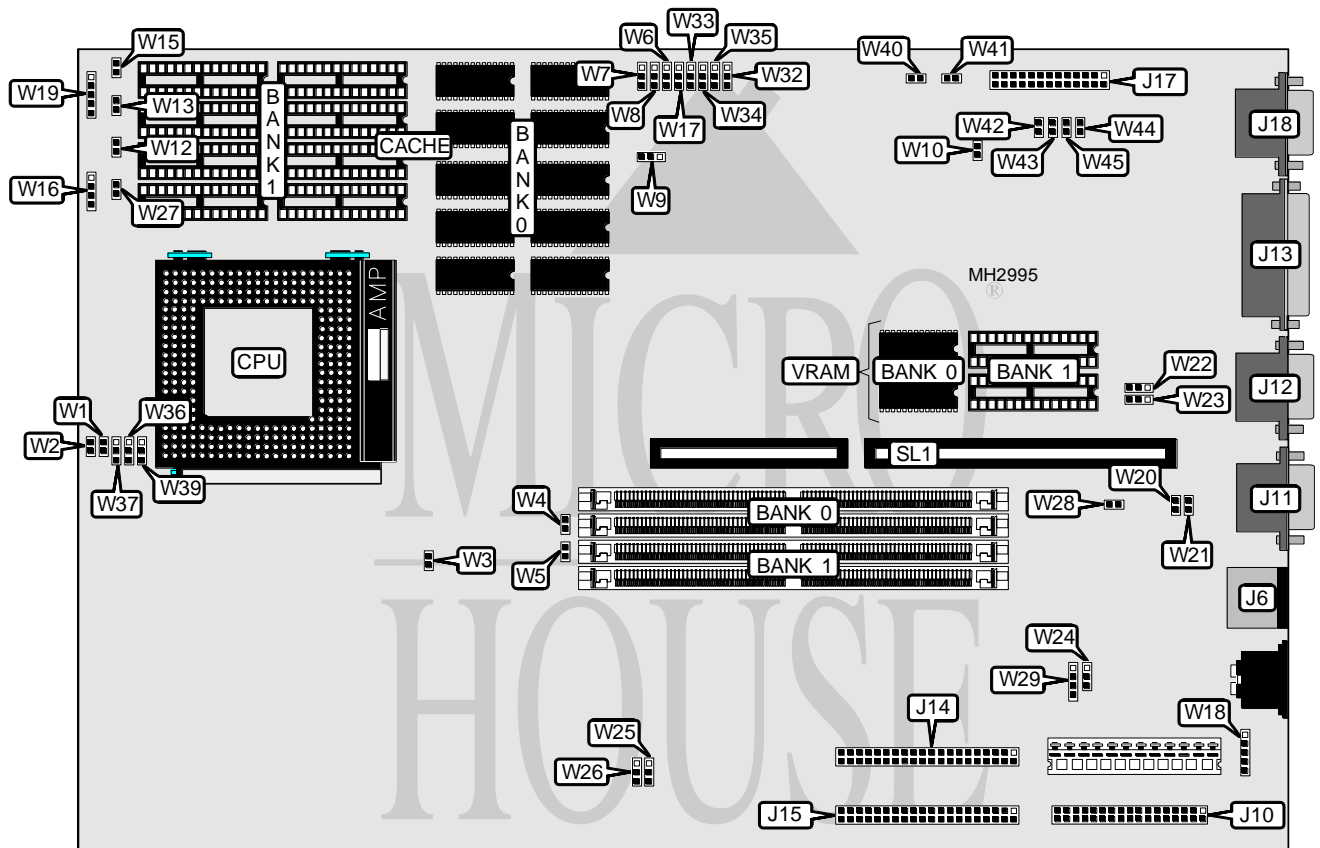


MICRONICS COMPUTERS, INC. LPX54 (REV. 3A)

Processor	Pentium
Processor Speed	75/90/100MHz
Chip Set	VLSI
Max. Onboard DRAM	128MB
Cache	256/512KB
BIOS	Phoenix
Dimensions	330mm x 218mm
I/O Options	PS/2 mouse port, parallel port, serial ports (2), VGA port, VGA feature connector, floppy drive interface, IDE interfaces (2), riser slot
NPU Options	None



CONNECTIONS			
Purpose	Location	Purpose	Location
PS/2 mouse port	J6	Riser slot	SL1
Floppy drive interface	J10	Turbo switch	W12
Serial port 1	J11	Turbo LED	W13
Serial port 2	J12	Reset switch	W15
Parallel port	J13	Speaker	W16
IDE interface 2	J14	Auxiliary keyboard connector	W18
IDE interface 1	J15	Power LED & keylock	W19
VGA feature connector	J17	IDE interface LED	W27
VGA port	J18		

Continued on next page. . .

MICRONICS COMPUTERS, INC.
LPX54 (REV. 3A)

... continued from previous page

USER CONFIGURABLE SETTINGS		
Function	Jumper	Position
í Cache type select write back	W1	Open
Cache type select write through	W1	Closed
í Flash BIOS normal mode	W9	pins 2 & 3 closed
Flash BIOS recovery mode	W9	pins 1 & 2 closed
í Flash BIOS write protect disabled	W10	Closed
Flash BIOS write protect enabled	W10	Open
í CMOS memory normal operation	W17	pins 1 & 2 closed
CMOS memory clear	W17	pins 2 & 3 closed
í Monitor type select color	W20	Closed
Monitor type select monochrome	W20	Open
í PS/2 mouse installed	W21	Closed
PS/2 mouse not installed	W21	Open
í Factory configured - do not alter	W32	pins 1 & 2 closed
í Factory configured - do not alter	W33	pins 1 & 2 closed
í Factory configured - do not alter	W34	pins 1 & 2 closed
í Factory configured - do not alter	W35	pins 1 & 2 closed
í Factory configured - do not alter	W36	pins 1 & 2 closed
í Factory configured - do not alter	W37	pins 2 & 3 closed
í Factory configured - do not alter	W39	pins 2 & 3 closed
í On board VGA enabled	W40	Open
On board VGA disabled	W40	Closed
í Factory configured - do not alter	W41	Closed
í VGA hardware enabled	W42	Open
VGA hardware disabled	W42	Closed
í Factory configured - do not alter	W43	Open
í Factory configured - do not alter	W44	Open
í Factory configured - do not alter	W45	Open
í Factory configured - do not alter	W46	pins 2 & 3 closed
Note: The location of W46 is unidentified.		

Continued on next page...

MICRONICS COMPUTERS, INC.

LPX54 (REV. 3A)

... continued from previous page

DRAM CONFIGURATION		
Size	Bank 0	Bank 1
8MB	(2) 1M x 36	NONE
16MB	(2) 1M x 36	(2) 1M x 36
16MB	(2) 2M x 36	NONE
24MB	(2) 2M x 36	(2) 1M x 36
32MB	(2) 4M x 36	NONE
32MB	(2) 2M x 36	(2) 2M x 36
40MB	(2) 4M x 36	(2) 1M x 36
48MB	(2) 4M x 36	(2) 2M x 36
64MB	(2) 8M x 36	NONE
64MB	(2) 4M x 36	(2) 4M x 36
72MB	(2) 8M x 36	(2) 1M x 36
80MB	(2) 8M x 36	(2) 2M x 36
96MB	(2) 8M x 36	(2) 4M x 36
128MB	(2) 8M x 36	(2) 8M x 36

VRAM CONFIGURATION		
Size	Bank 0	Bank 1
1MB	(2) 256K x 16	NONE
2MB	(2) 256K x 16	(2) 256K x 16

Note: Bank 0 is factory installed and is not configurable.

CACHE CONFIGURATION		
Size	Bank 0	Bank 1
256KB	(8) 32K x 8	NONE
512KB	(8) 32K x 8	(8) 32K x 8

Note: Bank 0 is factory installed and is not configurable.

CACHE JUMPER CONFIGURATION			
Size	W6	W7	W8
256KB	pins 1 & 2 closed	pins 1 & 2 closed	pins 1 & 2 closed
512KB	pins 2 & 3 closed	pins 2 & 3 closed	pins 2 & 3 closed

CPU SPEED CONFIGURATION				
Speed	W3	W4	W5	W38
75MHz	Closed	Closed	Open	Open
90MHz	Closed	Open	Closed	Open
100MHz	Open	Closed	Open	Closed

Note: The location of W38 is unidentified.

CPU CLOCK SPEED CONFIGURATION	
Speed	W2
1.5x	Open
2x	Closed

Continued on next page. . .

MICRONICS COMPUTERS, INC.

LPX54 (REV. 3A)

... continued from previous page

DMA CONFIGURATION		
DMA	W22	W23
None	Open	Open
DMA 1	pins 1 & 2 closed	pins 1 & 2 closed
DMA 3	pins 2 & 3 closed	pins 2 & 3 closed

DMA CONFIGURATION		
DMA	W25	W26
None	Open	Open
DMA 6	pins 1 & 2 closed	pins 1 & 2 closed
DMA 7	pins 2 & 3 closed	pins 2 & 3 closed

PCI CONFIGURATION				
IDE 1 IRQ	IDE 2 IRQ	W24	W28	W29
í IRQ 14	IRQ 15	pins 2 & 3 closed	Open	pins 1 & 2 closed
None	None	Open	Open	Open
None	IRQ 15	pins 2 & 3 closed	Open	Open
PCI INT A	None	Open	Closed	Open
PCI INT A	IRQ 15	pins 2 & 3 closed	Closed	Open
IRQ 14	None	Open	Open	pins 1 & 2 closed