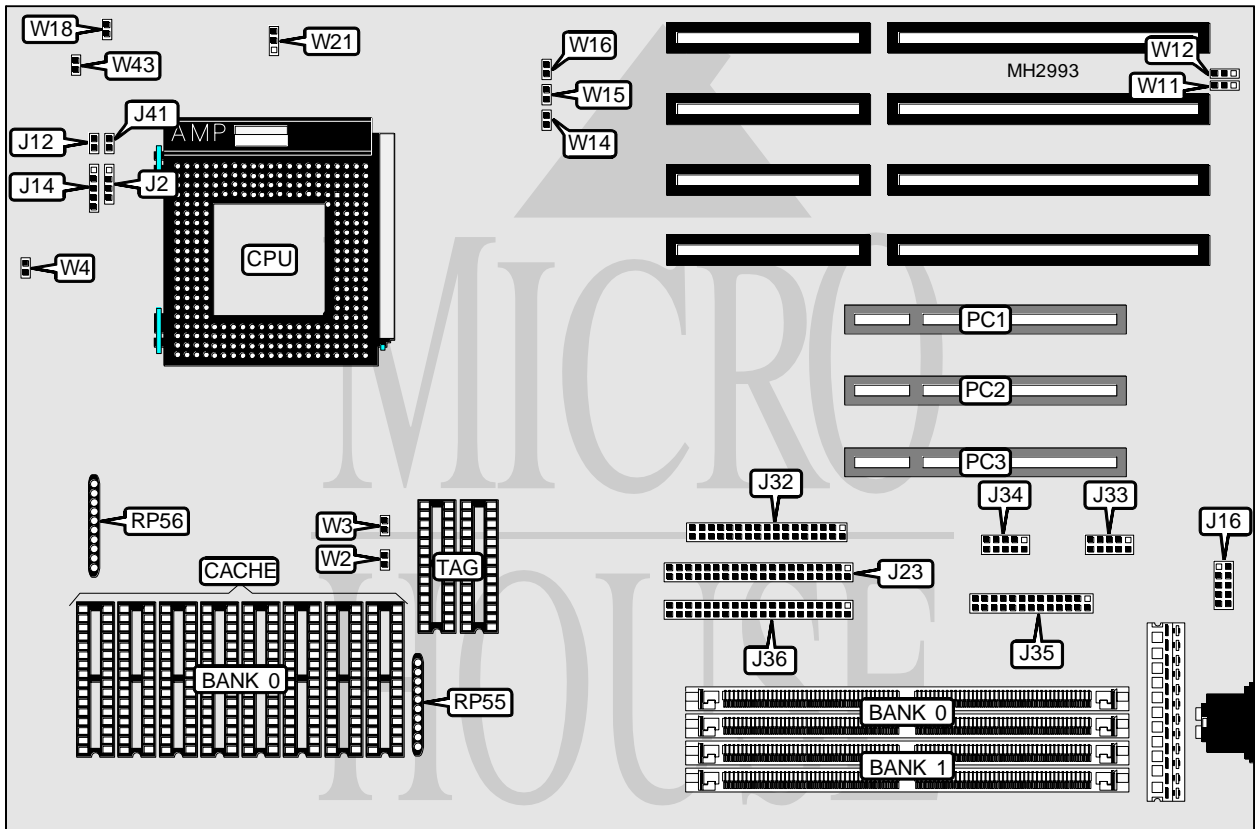


MICRONICS COMPUTERS, INC.

M54LI (REV. 1B)

Processor	Pentium
Processor Speed	75/90/100/120/133MHz
Chip Set	SIS
Max. Onboard DRAM	128MB
Cache	256/512KB
BIOS	Phoenix
Dimensions	330mm x 218mm
I/O Options	PS/2 mouse interface, parallel port, serial ports (2), 32-bit PCI slots (3), floppy drive interface, IDE interfaces (2)
NPU Options	None



CONNECTIONS			
Purpose	Location	Purpose	Location
Speaker	J2	Serial port 2	J34
Reset switch	J12	Parallel port	J35
Power LED & keylock	J14	IDE interface 1	J36
PS/2 mouse interface	J16	IDE interface LED	J41
IDE interface 2	J23	32-bit PCI slots	PC1 - PC3
Floppy drive interface	J32	Turbo LED	W43
Serial port 1	J33		

Continued on next page. . .

MICRONICS COMPUTERS, INC.
M54LI (REV. 1B)

... continued from previous page

USER CONFIGURABLE SETTINGS		
Function	Jumper	Position
í CMOS memory normal operation	W18	Open
CMOS memory clear	W18	Closed
í BIOS normal operation	W21	pins 1 & 2 closed
BIOS recovery mode	W21	pins 2 & 3 closed

DRAM CONFIGURATION		
Size	Bank 0	Bank 1
8MB	(2) 1M x 36	NONE
16MB	(2) 1M x 36	(2) 1M x 36
16MB	(2) 2M x 36	NONE
24MB	(2) 2M x 36	(2) 1M x 36
32MB	(2) 4M x 36	NONE
32MB	(2) 2M x 36	(2) 2M x 36
40MB	(2) 4M x 36	(2) 1M x 36
48MB	(2) 4M x 36	(2) 2M x 36
64MB	(2) 8M x 36	NONE
64MB	(2) 4M x 36	(2) 4M x 36
72MB	(2) 8M x 36	(2) 1M x 36
80MB	(2) 8M x 36	(2) 2M x 36
96MB	(2) 8M x 36	(2) 4M x 36
128MB	(2) 8M x 36	(2) 8M x 36

CACHE CONFIGURATION		
Size	Bank 0	TAG
256KB	(8) 32K x 8	(2) 32K x 8
512KB	(8) 64K x 8	(2) 32K x 8

CACHE JUMPER CONFIGURATION		
Size	W2	W3
256KB	Open	Open
512KB	Closed	Open

CACHE VOLTAGE CONFIGURATION		
Voltage	RP55	RP56
3.3v	Not installed	Installed
5v	Installed	Not installed

CPU SPEED CONFIGURATION				
Speed	W4	W14	W15	W16
75MHz	Open	Closed	Closed	Open
90MHz	Open	Closed	Open	Closed
100MHz	Open	Open	Closed	Open
120MHz	Closed	Closed	Open	Closed
133MHz	Closed	Open	Closed	Open

Continued on next page...

MICRONICS COMPUTERS, INC.
M54LI (REV. 1B)

... continued from previous page

DMA CONFIGURATION		
DMA	W11	W12
DMA 1	pins 1 & 2 closed	pins 1 & 2 closed
DMA 3	pins 2 & 3 closed	pins 2 & 3 closed