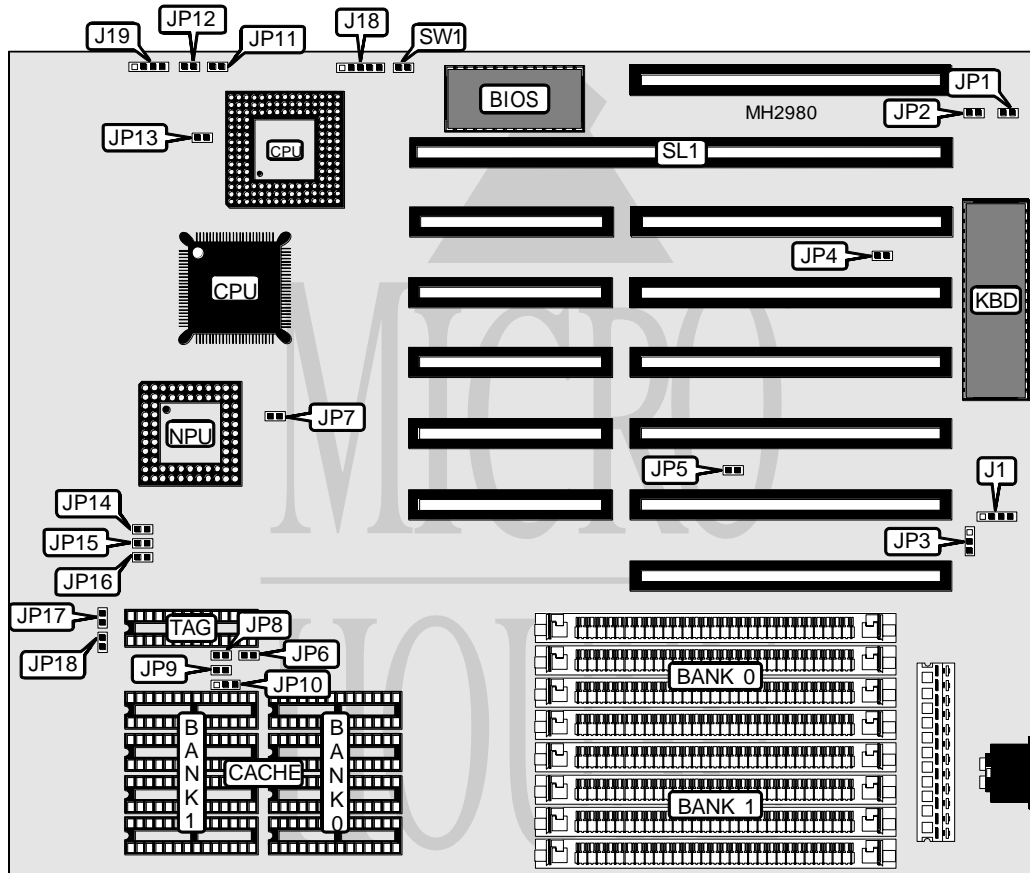


# UNIDENTIFIED 386 LOCAL-BUS CACHE MAINBOARD

|                          |                                   |
|--------------------------|-----------------------------------|
| <b>Processor</b>         | AM386DX/80386DX/AM486DXL/CX486DLC |
| <b>Processor Speed</b>   | 33/40MHz                          |
| <b>Chip Set</b>          | OPTI                              |
| <b>Max. Onboard DRAM</b> | 32MB                              |
| <b>Cache</b>             | 64/128/256KB                      |
| <b>BIOS</b>              | AMI                               |
| <b>Dimensions</b>        | 240mm x 221mm                     |
| <b>I/O Options</b>       | 32-bit VESA local bus slot        |
| <b>NPU Options</b>       | 80387DX/CX487DLC                  |



| CONNECTIONS         |          |                            |          |
|---------------------|----------|----------------------------|----------|
| Purpose             | Location | Purpose                    | Location |
| External battery    | J1       | Turbo switch               | JP12     |
| Power LED & keylock | J18      | 32-bit VESA local bus slot | SL1      |
| Speaker             | J19      | Reset switch               | SW1      |
| Turbo LED           | JP11     |                            |          |

Continued on next page. . .

# UNIDENTIFIED

## 386 LOCAL-BUS CACHE MAINBOARD

... continued from previous page

### USER CONFIGURABLE SETTINGS

| Function                            | Jumper | Position          |
|-------------------------------------|--------|-------------------|
| í CMOS memory normal operation      | JP3    | pins 2 & 3 closed |
| CMOS memory clear                   | JP3    | pins 1 & 2 closed |
| í Monitor type select color         | JP4    | Closed            |
| Monitor type select monochrome      | JP4    | Open              |
| í Factory configured - do not alter | JP7    | N/A               |
| í Factory configured - do not alter | JP14   | N/A               |
| í Factory configured - do not alter | JP15   | N/A               |
| í Factory configured - do not alter | JP16   | N/A               |

### DRAM CONFIGURATION

| Size | Bank 0       | Bank 1       |
|------|--------------|--------------|
| 1MB  | (4) 256K x 9 | NONE         |
| 2MB  | (4) 256K x 9 | (4) 256K x 9 |
| 4MB  | (4) 1M x 9   | NONE         |
| 8MB  | (4) 1M x 9   | (4) 1M x 9   |
| 16MB | (4) 4M x 9   | NONE         |
| 32MB | (4) 4M x 9   | (4) 4M x 9   |

### CACHE CONFIGURATION

| Size  | Bank 0      | Bank 1      | TAG         |
|-------|-------------|-------------|-------------|
| 64KB  | (4) 8K x 8  | (4) 8K x 8  | (1) 8K x 8  |
| 128KB | (4) 32K x 8 | NONE        | (1) 8K x 8  |
| 256KB | (4) 32K x 8 | (4) 32K x 8 | (1) 32K x 8 |

### CACHE JUMPER CONFIGURATION

| Size  | JP6    | JP8    | JP9    | JP10  | JP17   | JP18   |
|-------|--------|--------|--------|-------|--------|--------|
| 64KB  | Open   | Open   | Open   | 2 & 3 | Open   | Open   |
| 128KB | Closed | Closed | Open   | 1 & 2 | Open   | Closed |
| 256KB | Closed | Closed | Closed | 2 & 3 | Closed | Closed |

Note: Pins designated should be in the closed position.

### CPU TYPE CONFIGURATION

| Type     | JP1    | JP5    | JP13   |
|----------|--------|--------|--------|
| AM486DX  | Open   | Open   | Open   |
| 80386DX  | Open   | Open   | Open   |
| AM386DXL | Open   | Open   | Open   |
| CX486DLC | Closed | Closed | Closed |

### CPU SPEED CONFIGURATION

| Speed | JP2    |
|-------|--------|
| 33MHz | Closed |
| 40MHz | Open   |