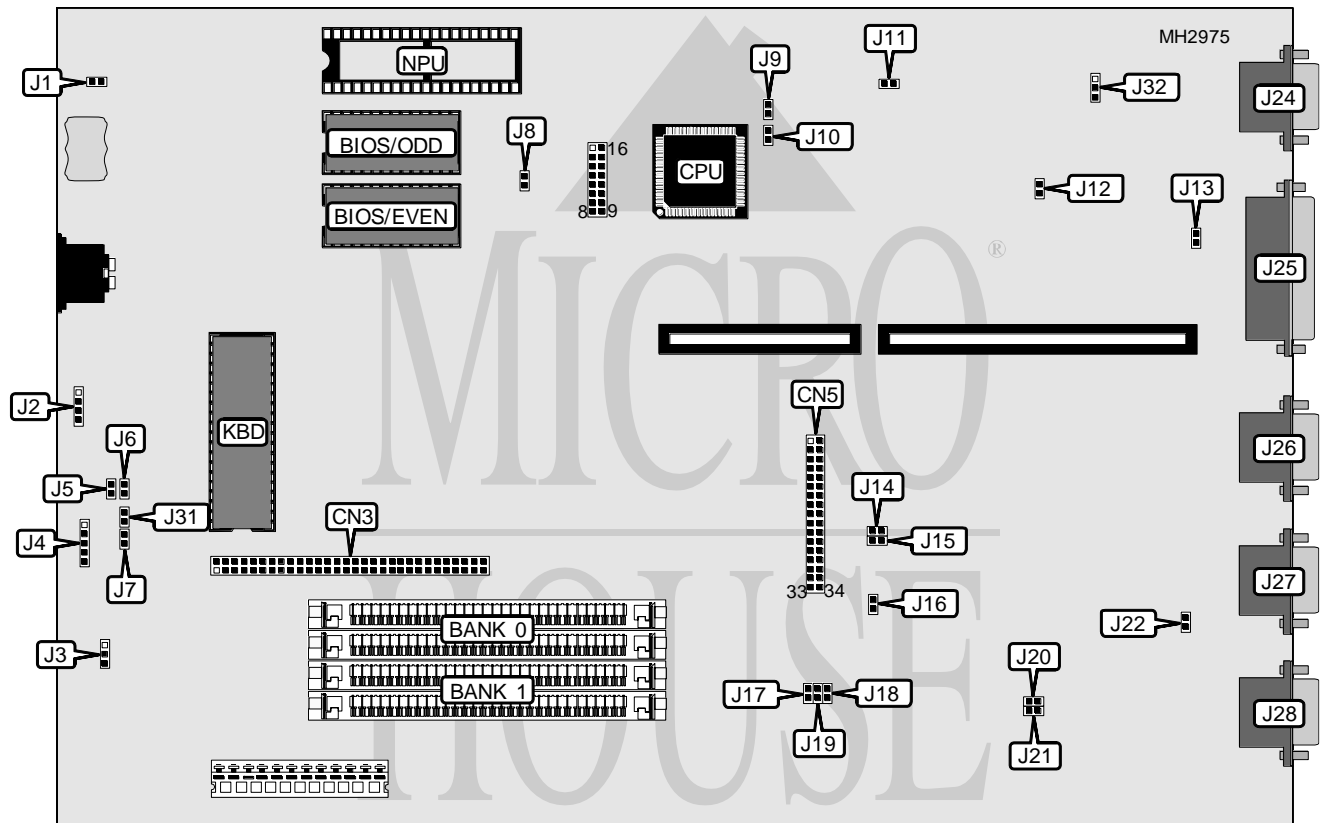


AQUARIUS SYSTEMS, INC.

ASI-008

Processor 80286
Processor Speed 16MHz
Chip Set Unidentified
Max. Onboard DRAM 4MB
Cache None
BIOS AMI
Dimensions 330mm x 218mm
I/O Options None
NPU Options 80287



CONNECTIONS			
Purpose	Location	Purpose	Location
VGA connector	CN3	Serial port 2	J24
Floppy drive interface	CN5	Parallel port	J25
External battery	J2	Serial port 1	J26
Speaker	J3	VGA port	J27
Power LED	J4	Monochrome port	J28

Continued on next page. . .

AQUARIUS SYSTEMS, INC.
ASI-008

... continued from previous page

USER CONFIGURABLE SETTINGS		
Function	Jumper	Position
í BIOS type select 27256	J1	Closed
BIOS type select 27128	J1	Open
í Shadow RAM disabled	J8	Closed
Shadow RAM enabled	J8	Open
í Page mode disabled	J9	Open
Page mode enabled	J9	Closed
í Read wait state 0 wait state	J10	On
Read wait state 1 wait state	J10	Off
í Write wait state 0 wait state	J11	On
Write wait state 1 wait state	J11	Off
í ROM wait state 2 wait states	J12	On
ROM wait state 3 wait states	J12	Off
í Factory configured - do not alter	J13	N/A
í Factory configured - do not alter	J14	N/A
í Factory configured - do not alter	J15	N/A
í Factory configured - do not alter	J16	N/A
í Factory configured - do not alter	J18	N/A
í Factory configured - do not alter	J19	N/A
í RAM parity check disabled	J30	pins 1 & 2 closed
RAM parity check enabled	J30	pins 2 & 3 closed
í Interleave select non-interleave	J32	pins 1 & 2 closed
Interleave select two-way paged/interleave	J32	pins 2 & 3 closed

Note: The location of J30 is unidentified.

DRAM CONFIGURATION		
Size	Bank 0	Bank 1
512KB	(2) 256K x 9	NONE
1MB	(2) 256K x 9	(2) 256K x 9
2MB	(2) 1M x 9	NONE
4MB	(2) 1M x 9	(2) 1M x 9

DRAM JUMPER CONFIGURATION			
Size	J5	J6	J7
512KB	On	Off	On
1MB	Off	On	On
2MB	On	On	Off
4MB	Off	On	Off

Continued on next page. ...

AQUARIUS SYSTEMS, INC.
ASI-008*... continued from previous page*

MONITOR MODE SELECT CONFIGURATION			
Mode	J17	J22	J31
Monochrome	Off	Off	On
Color	On	On	Off

IRQ CONFIGURATION		
IRQ	JP20	JP21
IRQ5	Open	Closed
IRQ7	Closed	Open