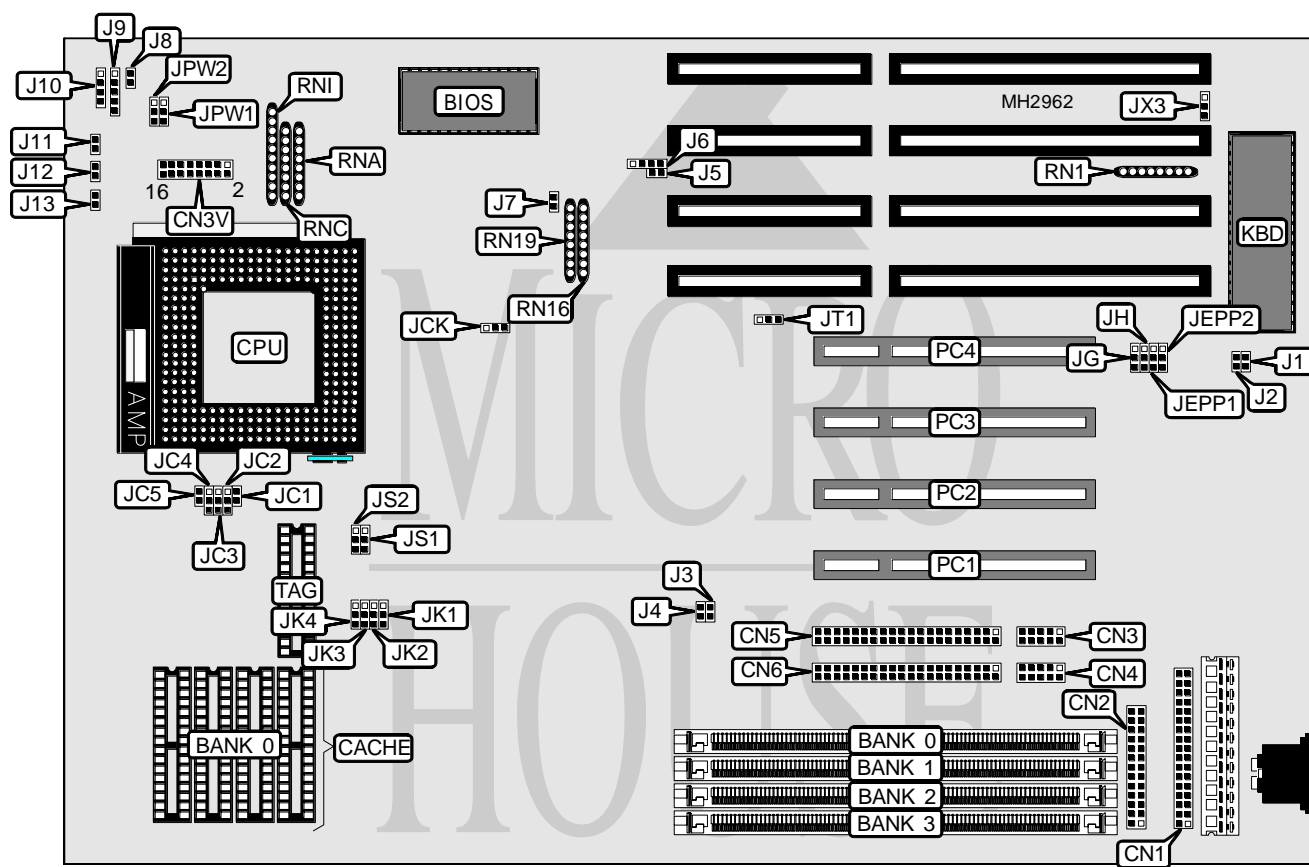


FIRST INTERNATIONAL COMPUTER, INC.

486-PIO-2

Processor	80486SX/CX486DX/SL80486DX/UMCU5SD/UMCU5S/UMCU5SLV/CX484DX2/ (SL)AM486DX2/AM486DX2/SL80486DX2/(SL)AM486DX4/AM486DX4/CXM1/ 80486DX4/P24D/P24S/Pentium Overdrive
Processor Speed	25/33/40/50(internal)/50/66(internal)/75(internal)/80(internal)/ 100(internal)MHz
Chip Set	VIA
Max. Onboard DRAM	128MB
Cache	128/256/512KB
BIOS	Award
Dimensions	330mm x 218mm
I/O Options	Parallel port, serial ports (2), 32-bit PCI slots (4), floppy drive interface, IDE interfaces (2)
NPU Options	None



Continued on next page. . .

FIRST INTERNATIONAL COMPUTER, INC.

486-PIO-2

... continued from previous page

CONNECTIONS			
Purpose	Location	Purpose	Location
Floppy drive interface	CN1	External battery	J6
Parallel port	CN2	Green PC connector	J7
Serial port 2	CN3	Chassis fan power	J8
Serial port 1	CN4	Power LED & keylock	J9
IDE interface 2	CN5	Speaker	J10
IDE interface 1	CN6	Reset switch	J11
IDE interface LED	J3	Turbo switch	J12
Green PC LED	J4	Turbo LED	J13
Outlet connector	J5	32-bit PCI slots	PC1 - PC4

USER CONFIGURABLE SETTINGS		
Function	Jumper	Position
í Monitor type select monochrome/EGA/VGA	J1	Open
Monitor type select CGA	J1	Closed
í CMOS memory normal operation	J2	Open
CMOS memory clear	J2	Closed

DRAM CONFIGURATION				
Size	Bank 0	Bank 1	Bank 2	Bank 3
1MB	(1) 256K x 36	NONE	NONE	NONE
1MB	NONE	(1) 256K x 36	NONE	NONE
1MB	NONE	NONE	(1) 256K x 36	NONE
2MB	(1) 256K x 36	(1) 256K x 36	NONE	NONE
2MB	(1) 256K x 36	NONE	(1) 256K x 36	NONE
2MB	NONE	NONE	(1) 256K x 36	(1) 256K x 36
2MB	NONE	(1) 256K x 36	(1) 256K x 36	NONE
3MB	(1) 256K x 36	(1) 256K x 36	(1) 256K x 36	NONE
3MB	NONE	(1) 256K x 36	(1) 256K x 36	(1) 256K x 36
3MB	(1) 256K x 36	NONE	(1) 256K x 36	(1) 256K x 36
4MB	(1) 1M x 36	NONE	NONE	NONE
4MB	NONE	(1) 1M x 36	NONE	NONE
4MB	NONE	NONE	(1) 1M x 36	NONE
4MB	(1) 256K x 36	(1) 256K x 36	(1) 256K x 36	(1) 256K x 36
5MB	(1) 256K x 36	(1) 1M x 36	NONE	NONE
5MB	(1) 256K x 36	NONE	(1) 1M x 36	NONE
5MB	(1) 1M x 36	(1) 256K x 36	NONE	NONE
5MB	(1) 1M x 36	NONE	(1) 256K x 36	NONE
5MB	NONE	(1) 256K x 36	(1) 1M x 36	NONE
5MB	NONE	(1) 1M x 36	(1) 256K x 36	NONE
6MB	(1) 256K x 36	(1) 256K x 36	(1) 1M x 36	NONE
6MB	(1) 256K x 36	(1) 1M x 36	(1) 256K x 36	NONE
6MB	(1) 1M x 36	(1) 256K x 36	(1) 256K x 36	NONE
6MB	NONE	(1) 1M x 36	(1) 256K x 36	(1) 256K x 36
6MB	(1) 1M x 36	NONE	(1) 256K x 36	(1) 256K x 36

Continued on next page. ...

FIRST INTERNATIONAL COMPUTER, INC.

486-PIO-2

... continued from previous page

DRAM CONFIGURATION (CON'T)				
Size	Bank 0	Bank 1	Bank 2	Bank 3
7MB	(1) 256K x 36	(1) 1M x 36	(1) 256K x 36	(1) 256K x 36
7MB	(1) 1M x 36	(1) 256K x 36	(1) 256K x 36	(1) 256K x 36
8MB	(1) 1M x 36	(1) 1M x 36	NONE	NONE
8MB	(1) 1M x 36	NONE	(1) 1M x 36	NONE
8MB	NONE	NONE	(1) 1M x 36	(1) 1M x 36
8MB	NONE	(1) 1M x 36	(1) 1M x 36	NONE
9MB	(1) 256K x 36	(1) 1M x 36	(1) 1M x 36	NONE
9MB	(1) 1M x 36	(1) 256K x 36	(1) 1M x 36	NONE
9MB	(1) 1M x 36	(1) 1M x 36	(1) 256K x 36	NONE
9MB	NONE	(1) 256K x 36	(1) 1M x 36	(1) 1M x 36
9MB	(1) 256K x 36	NONE	(1) 1M x 36	(1) 1M x 36
10MB	(1) 256K x 36	(1) 256K x 36	(1) 1M x 36	(1) 1M x 36
10MB	(1) 1M x 36	(1) 1M x 36	(1) 256K x 36	(1) 256K x 36
12MB	(1) 1M x 36	(1) 1M x 36	(1) 1M x 36	NONE
12MB	NONE	(1) 1M x 36	(1) 1M x 36	(1) 1M x 36
12MB	(1) 1M x 36	NONE	(1) 1M x 36	(1) 1M x 36
13MB	(1) 256K x 36	(1) 1M x 36	(1) 1M x 36	(1) 1M x 36
13MB	(1) 1M x 36	(1) 256K x 36	(1) 1M x 36	(1) 1M x 36
16MB	NONE	(1) 4M x 36	NONE	NONE
16MB	NONE	NONE	(1) 4M x 36	NONE
16MB	(1) 1M x 36	(1) 1M x 36	(1) 1M x 36	(1) 1M x 36
17MB	(1) 256K x 36	(1) 4M x 36	NONE	NONE
17MB	(1) 256K x 36	NONE	(1) 4M x 36	NONE
17MB	NONE	(1) 256K x 36	(1) 4M x 36	NONE
17MB	NONE	(1) 4M x 36	(1) 256K x 36	NONE
18MB	(1) 256K x 36	(1) 256K x 36	(1) 4M x 36	NONE
18MB	(1) 256K x 36	(1) 4M x 36	(1) 256K x 36	NONE
18MB	NONE	(1) 4M x 36	(1) 256K x 36	(1) 256K x 36
19MB	(1) 256K x 36	(1) 4M x 36	(1) 256K x 36	(1) 256K x 36
20MB	(1) 1M x 36	(1) 4M x 36	NONE	NONE
20MB	(1) 1M x 36	NONE	(1) 4M x 36	NONE
20MB	NONE	(1) 1M x 36	(1) 4M x 36	NONE
20MB	NONE	(1) 4M x 36	(1) 1M x 36	NONE
21MB	(1) 256K x 36	(1) 1M x 36	(1) 4M x 36	NONE
21MB	(1) 256K x 36	(1) 4M x 36	(1) 1M x 36	NONE
21MB	(1) 1M x 36	(1) 256K x 36	(1) 4M x 36	NONE
21MB	(1) 1M x 36	(1) 4M x 36	(1) 256K x 36	NONE
22MB	(1) 1M x 36	(1) 4M x 36	(1) 256K x 36	(1) 256K x 36
24MB	(1) 1M x 36	(1) 1M x 36	(1) 4M x 36	NONE
24MB	(1) 1M x 36	(1) 4M x 36	(1) 1M x 36	NONE
24MB	NONE	(1) 4M x 36	(1) 1M x 36	(1) 1M x 36
25MB	(1) 256K x 36	(1) 4M x 36	(1) 1M x 36	(1) 1M x 36
28MB	(1) 1M x 36	(1) 4M x 36	(1) 1M x 36	(1) 1M x 36
33MB	(1) 256K x 36	(1) 4M x 36	(1) 4M x 36	NONE

Continued on next page...

FIRST INTERNATIONAL COMPUTER, INC.

486-PIO-2

... continued from previous page

DRAM CONFIGURATION (CON'T)				
Size	Bank 0	Bank 1	Bank 2	Bank 3
33MB	NONE	(1) 256K x 36	(1) 4M x 36	(1) 4M x 36
33MB	(1) 256K x 36	NONE	(1) 4M x 36	(1) 4M x 36
34MB	(1) 256K x 36	(1) 256K x 36	(1) 4M x 36	(1) 4M x 36
36MB	(1) 1M x 36	(1) 4M x 36	(1) 4M x 36	NONE
36MB	NONE	(1) 1M x 36	(1) 4M x 36	(1) 4M x 36
36MB	(1) 1M x 36	NONE	(1) 4M x 36	(1) 4M x 36
37MB	(1) 256K x 36	(1) 1M x 36	(1) 4M x 36	(1) 4M x 36
37MB	(1) 1M x 36	(1) 256K x 36	(1) 4M x 36	(1) 4M x 36
40MB	(1) 1M x 36	(1) 1M x 36	(1) 4M x 36	(1) 4M x 36
48MB	NONE	(1) 4M x 36	(1) 4M x 36	(1) 4M x 36
49MB	(1) 256K x 36	(1) 4M x 36	(1) 4M x 36	(1) 4M x 36
52MB	(1) 1M x 36	(1) 4M x 36	(1) 4M x 36	(1) 4M x 36
64MB	NONE	(1) 8M x 36	(1) 8M x 36	NONE
65MB	(1) 256K x 36	(1) 16M x 36	NONE	NONE
65MB	(1) 256K x 36	(1) 8M x 36	(1) 8M x 36	NONE
66MB	(1) 256K x 36	(1) 256K x 36	(1) 8M x 36	(1) 8M x 36
66MB	(1) 256K x 36	(1) 256K x 36	(1) 8M x 36	(1) 8M x 36
66MB	(1) 8M x 36	(1) 8M x 36	(1) 256K x 36	(1) 256K x 36
68MB	(1) 1M x 36	(1) 8M x 36	(1) 8M x 36	NONE
68MB	NONE	(1) 1M x 36	(1) 8M x 36	(1) 8M x 36
68MB	(1) 8M x 36	(1) 1M x 36	(1) 8M x 36	NONE
69MB	(1) 256K x 36	(1) 8M x 36	(1) 1M x 36	(1) 8M x 36
69MB	(1) 256K x 36	(1) 1M x 36	(1) 8M x 36	(1) 8M x 36
69MB	(1) 1M x 36	(1) 256K x 36	(1) 8M x 36	(1) 8M x 36
69MB	(1) 1M x 36	(1) 8M x 36	(1) 256K x 36	(1) 8M x 36
72MB	(1) 1M x 36	(1) 1M x 36	(1) 8M x 36	(1) 8M x 36
72MB	(1) 1M x 36	(1) 8M x 36	(1) 1M x 36	(1) 8M x 36
72MB	(1) 8M x 36	(1) 8M x 36	(1) 1M x 36	(1) 1M x 36
80MB	(1) 8M x 36	(1) 4M x 36	(1) 8M x 36	NONE
80MB	(1) 8M x 36	(1) 8M x 36	(1) 4M x 36	NONE
81MB	(1) 256K x 36	(1) 4M x 36	(1) 8M x 36	(1) 8M x 36
81MB	(1) 256K x 36	(1) 8M x 36	(1) 4M x 36	(1) 8M x 36
84MB	(1) 1M x 36	(1) 4M x 36	(1) 8M x 36	(1) 8M x 36
84MB	(1) 1M x 36	(1) 8M x 36	(1) 4M x 36	(1) 8M x 36
96MB	(1) 8M x 36	(1) 8M x 36	(1) 8M x 36	NONE
97MB	(1) 256K x 36	(1) 8M x 36	(1) 8M x 36	(1) 8M x 36
128MB	(1) 8M x 36	(1) 8M x 36	(1) 8M x 36	(1) 8M x 36

CACHE CONFIGURATION		
Size	Bank 0	TAG
128KB	(4) 32K x 8	(1) 8K x 8
256KB	(4) 64K x 8	(1) 32K x 8
512KB	(4) 128K x 8	(1) 32K x 8

Continued on next page. . .

FIRST INTERNATIONAL COMPUTER, INC.

486-PIO-2

... continued from previous page

CACHE JUMPER CONFIGURATION		
Size	JS1	JS2
128KB	pins 1 & 2 closed	pins 1 & 2 closed
256KB	pins 2 & 3 closed	pins 1 & 2 closed
512KB	pins 2 & 3 closed	pins 2 & 3 closed

CPU TYPE CONFIGURATION					
Type	JC1	JC2	JC3	JC4	JC5
80486SX	Open	Open	2 & 3	2 & 3	Open
CX486DX	Open	Open	1 & 2	1 & 2	Open
SL80486DX	Open	2 & 3	1 & 2	1 & 2	Open
UMC U5SD	Open	Open	1 & 2	1 & 2	Open
UMC U5S/U5SLV	Open	Open	2 & 3	2 & 3	Open
CX486DX2	Open	Open	1 & 2	1 & 2	Open
SL AM486DX2	Open	2 & 3	1 & 2	1 & 2	Open
AM486DX2	Closed	Open	1 & 2	1 & 2	Open
SL80486DX2	Open	2 & 3	1 & 2	1 & 2	Open
SL AM486DX4	Open	1 & 2	1 & 2	1 & 2	Open
AM486DX4	Open	Open	1 & 2	1 & 2	Open
CXM1	Open	1 & 2	1 & 2	1 & 2	Open
80486DX4	Open	1 & 2	1 & 2	1 & 2	Open
80486DX4 (2x)	Open	2 & 3	1 & 2	1 & 2	Open
80486DX4 (3x)	Open	1 & 2	1 & 2	1 & 2	Open
P24D (WB)	Open	1 & 2	1 & 2	1 & 2	Open
P24D (WT)	Closed	1 & 2	1 & 2	1 & 2	Open
P24S	Open	2 & 3	1 & 2	1 & 2	Open
P24T (WB)	Open	1 & 2	1 & 2	1 & 2	Closed
P24T (WT)	Closed	1 & 2	1 & 2	1 & 2	Closed

Note: Pins designated should be in the closed position.

Continued on next page...

FIRST INTERNATIONAL COMPUTER, INC.

486 - P I O - 2

... continued from previous page

CPU TYPE CONFIGURATION (CON'T)			
Type	RNA	RNC	RNI
80486SX	Not installed	Not installed	pins 1 - 5 closed
CX486DX	Not installed	Installed	Not installed
SL80486DX	Not installed	Not installed	pins 1 - 5 closed
UMC U5SD	Installed	Not installed	Not installed
UMC U5S/U5SLV	Installed	Not installed	Not installed
CX486DX2	Not installed	Installed	Not installed
SL AM486DX2	Not installed	Not installed	pins 6 - 10 closed
AM486DX2	Installed	Not installed	Not installed
SL80486DX2	Not installed	Not installed	pins 1 - 5 closed
SL AM486DX4	Not installed	Not installed	pins 6 - 10 closed
AM486DX4	Installed	Not installed	Not installed
CXM1	Not installed	Not installed	pins 6 - 10 closed
80486DX4	Not installed	Not installed	pins 1 - 5 closed
80486DX4 (2x)	Not installed	Not installed	pins 1 - 5 closed
80486DX4 (3x)	Not installed	Not installed	pins 1 - 5 closed
P24D (WB)	Not installed	Not installed	pins 1 - 5 closed
P24D (WT)	Not installed	Not installed	pins 1 - 5 closed
P24S	Not installed	Not installed	pins 1 - 5 closed
P24T (WB)	Not installed	Not installed	pins 1 - 5 closed
P24T (WT)	Not installed	Not installed	pins 1 - 5 closed

CPU SPEED CONFIGURATION				
Speed	JK1	JK2	JK3	JK4
25MHz	pins 2 & 3 closed	pins 1 & 2 closed	pins 2 & 3 closed	pins 1 & 2 closed
33MHz	pins 2 & 3 closed	pins 2 & 3 closed	pins 1 & 2 closed	pins 1 & 2 closed
40MHz	pins 1 & 2 closed	pins 1 & 2 closed	pins 2 & 3 closed	pins 1 & 2 closed
50iMHz	pins 2 & 3 closed	pins 1 & 2 closed	pins 2 & 3 closed	pins 1 & 2 closed
50MHz	pins 2 & 3 closed	pins 1 & 2 closed	pins 2 & 3 closed	pins 2 & 3 closed
66iMHz	pins 2 & 3 closed	pins 2 & 3 closed	pins 1 & 2 closed	pins 1 & 2 closed
75iMHz	pins 2 & 3 closed	pins 1 & 2 closed	pins 2 & 3 closed	pins 1 & 2 closed
80iMHz	pins 1 & 2 closed	pins 1 & 2 closed	pins 2 & 3 closed	pins 1 & 2 closed
100iMHz	pins 2 & 3 closed	pins 2 & 3 closed	pins 1 & 2 closed	pins 1 & 2 closed

CPU VOLTAGE CONFIGURATION			
Voltage	CN3V	JPW1	JPW2
3.3v	Open	1 & 2	Open
3.45v	Open	2 & 3	Open
3.6v	Open	Open	1 & 2
4v	Open	Open	2 & 3
5v	1 & 2, 3 & 4, 13 & 14, 15 & 16		

Note: Pins designated should be in the closed position.

Continued on next page. . .

FIRST INTERNATIONAL COMPUTER, INC.

486-PIO-2

... continued from previous page

DMA CONFIGURATION		
DMA	JEPP1	JEPP2
DMA 1	pins 2 & 3 closed	pins 2 & 3 closed
DMA 3	pins 1 & 2 closed	pins 1 & 2 closed

PARALLEL PORT CONFIGURATION		
Setting	JH	JG
Output	pins 2 & 3 closed	pins 2 & 3 closed
Input	pins 1 & 2 closed	pins 1 & 2 closed
Bidirectional	pins 2 & 3 closed	Open

KEYBOARD CONFIGURATION				
Setting	JX3	RN1	RN16	RN19
Internal controller	pins 1 & 2 closed	Not installed	Installed	Not installed
External controller	pins 2 & 3 closed	Installed	Not installed	Installed

PCI BUS CLOCK CONFIGURATION		
DMA	JCK	JT1
<= 33MHz	pins 1 & 2 closed	pins 1 & 2 closed
> 33MHz	pins 2 & 3 closed	pins 2 & 3 closed