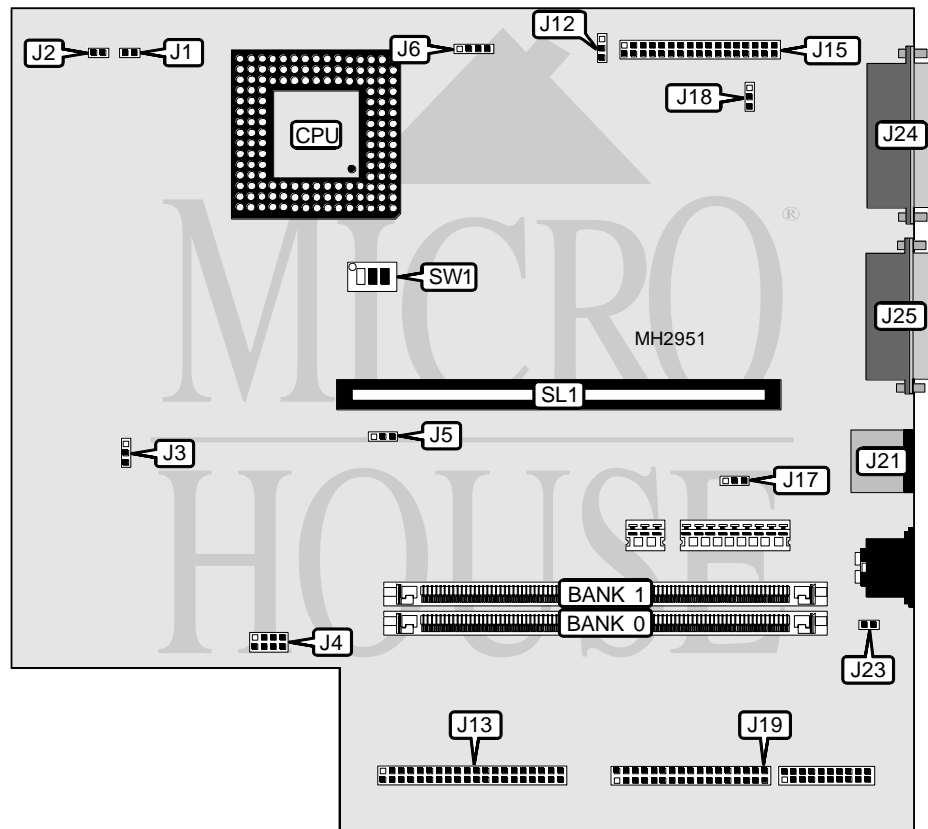


REPLY CORPORATION

POWERBOARD 25-286, PS/2 MODEL 25

Processor	CX486DX2/80486DX2/80486DX4
Processor Speed	50(internal)/66(internal)/100(internal)MHz
Chip Set	Unidentified
Max. Onboard DRAM	32MB
Cache	None
BIOS	Reply
Dimensions	330mm x 218mm
I/O Options	PS/2 mouse port, parallel port, serial port, floppy drive interface, IDE interface, VGA interface, riser slot
NPU Options	None



CONNECTIONS			
Purpose	Location	Purpose	Location
VGA interface	J4	PS/2 mouse port	J21
Drive power connector	J5	Headphone connector	J23
External battery	J6	Parallel port	J24
IDE interface	J13	Serial port	J25
Floppy drive interface	J15	Riser Card	SL1
ST-506/412 interface	J19		

Continued on next page. . .

REPLY CORPORATION

POWERBOARD 25-286, PS/2 MODEL 25

... continued from previous page

USER CONFIGURABLE SETTINGS		
Function	Jumper	Position
í VGA IRQ enabled	J3	pins 1 & 2 closed
VGA IRQ disabled	J3	pins 2 & 3 closed
í Floppy drive cable select type A	J12	pins 2 & 3 closed
Floppy drive cable select type B	J12	pins 1 & 2 closed
í IRQ5 enabled	J17	pins 1 & 2 closed
IRQ5 disabled	J17	pins 2 & 3 closed
í CMOS memory normal operation	J18	pins 1 & 2 closed
CMOS memory clear	J18	pins 2 & 3 closed

DRAM CONFIGURATION		
Size	Bank 0	Bank 1
1MB	(1) 256K x 36	NONE
2MB	(1) 256K x 36	(1) 256K x 36
4MB	(1) 1M x 36	NONE
5MB	(1) 1M x 36	(1) 256K x 36
8MB	(1) 1M x 36	(1) 1M x 36
16MB	(1) 4M x 36	NONE
17MB	(1) 256K x 36	(1) 4M x 36
17MB	(1) 4M x 36	(1) 256K x 36
20MB	(1) 1M x 36	(1) 4M x 36
20MB	(1) 4M x 36	(1) 1M x 36
32MB	(1) 4M x 36	(1) 4M x 36

CPU TYPE CONFIGURATION		
Type	J1	J2
CX486DX2	Closed	Open
80486DX2	Open	Closed
80486DX4	Open	Closed

CPU SPEED CONFIGURATION			
Speed	SW1/1	SW1/2	SW1/3
50iMHz	Off	Off	On
66iMHz	On	On	Off
100iMHz	On	On	Off