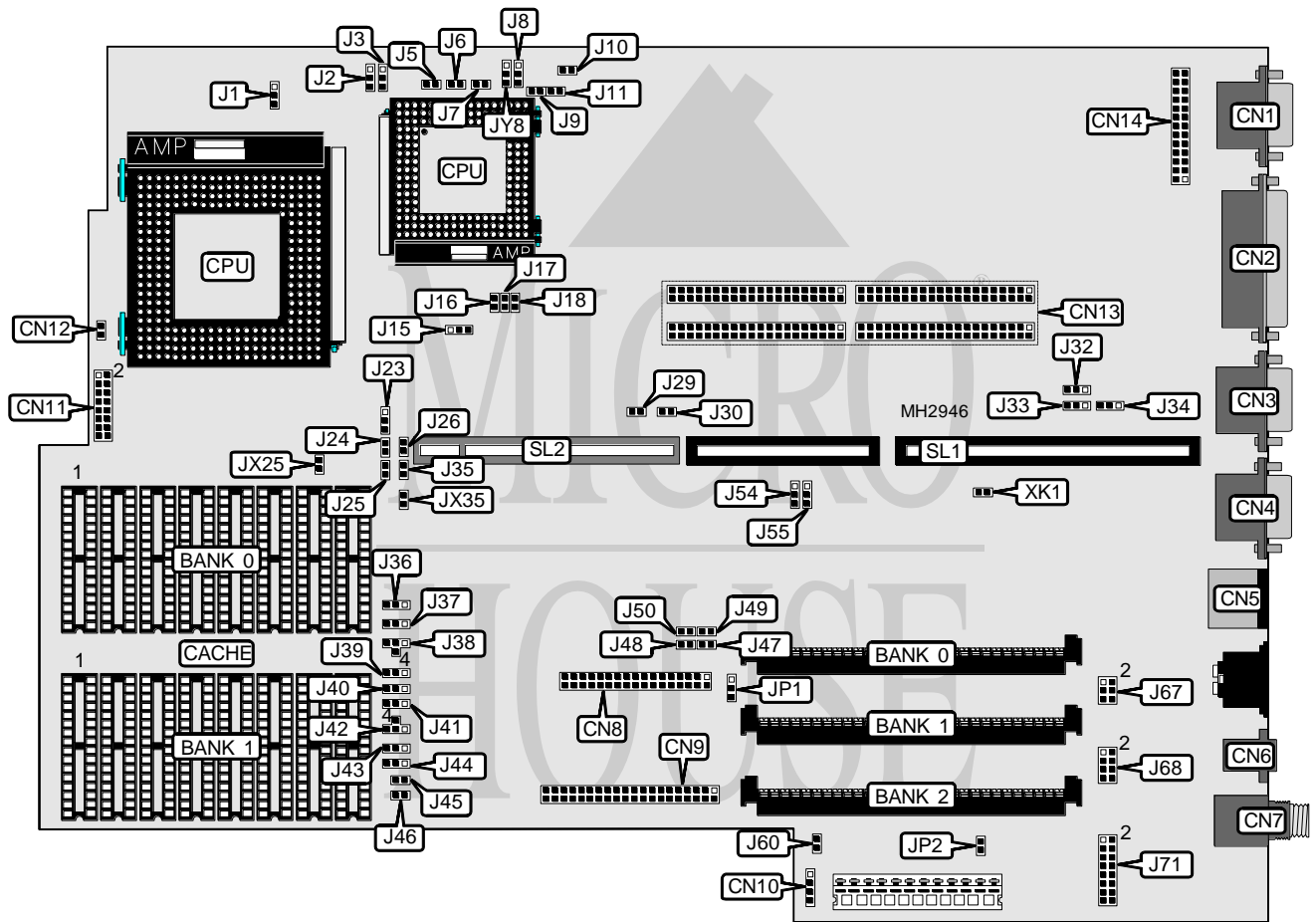


# WYSE TECHNOLOGY, INC.

## WYSE FORTE GSV

<b>Processor</b>	80486SX/80486DX/80486DX2/Pentium
<b>Processor Speed</b>	25/33/40/50(internal)/50/60/66(internal)MHz
<b>Chip Set</b>	Unidentified
<b>Max. Onboard DRAM</b>	96MB
<b>Cache</b>	256/512/1024/2048KB
<b>BIOS</b>	Unidentified
<b>Dimensions</b>	330mm x 218mm
<b>I/O Options</b>	PS/2 mouse port, parallel port, serial ports (2), VGA port, VGA feature connector, video display board connector, 10 base T connector, 10 base 2 connector, floppy drive interface, IDE interface, 32-bit VESA local bus slot
<b>NPU Options</b>	None



Continued on next page. . .

**WYSE TECHNOLOGY, INC.**  
**WYSE FORTE GSV**

... continued from previous page

CONNECTIONS			
Purpose	Location	Purpose	Location
VGA port	CN1	Power LED	CN11 pins 3 & 4
Parallel port	CN2	Green PC LED	CN11 pins 5 & 6
Serial port 2	CN3	Reset switch	CN11 pins 7 & 8
Serial port 1	CN4	Keylock	CN11 pins 9 & 10
PS/2 mouse port	CN5	Thermo sensor	CN11 pins 11 & 12
10 base T connector	CN6	IDE interface LED	CN11 pins 13 & 14
10 base 2 connector	CN7	Chassis fan power	CN12
Floppy drive interface	CN8	Video display board	CN13
IDE interface	CN9	VGA feature connector	CN14
External battery	CN10	Riser Card	SL1
Speaker	CN11 pins 1 & 2	32-bit VESA local bus slots	SL2

USER CONFIGURABLE SETTINGS		
Function	Jumper	Position
í Factory configured - do not alter	J10	N/A
í Factory configured - do not alter	J24	Open
í Factory configured - do not alter	J26	pins 1 & 2 closed
í Parallel port IRQ select IRQ7	J32	pins 2 & 3 closed
Parallel port IRQ select IRQ5	J32	pins 1 & 2 closed
í Factory configured - do not alter	J35	pins 1 & 2 closed
í I/O delay enabled	J47	Closed
I/O delay disabled	J47	Open
í Monitor type select color	J54	pins 1 & 2 closed
Monitor type select monochrome	J54	pins 2 & 3 closed
í CMOS memory normal operation	J55	pins 2 & 3 closed
CMOS memory clear	J55	pins 1 & 2 closed
í Sound card not installed	J60	Closed
í Sound card installed	J60	Open
í Factory configured - do not alter	JP1	N/A
í Factory configured - do not alter	JP2	N/A
í Factory configured - do not alter	JX25	Open
í Factory configured - do not alter	JX35	Open
í Onboard ethernet enabled	XK1	Closed
Onboard ethernet disabled	XK1	Open

DRAM CONFIGURATION			
Size	Bank 0	Bank 1	Bank 2
2MB	(1) 512K x 36	NONE	NONE
4MB	(1) 512K x 36	(1) 512K x 36	NONE
4MB	(1) 1M x 36	NONE	NONE
6MB	(1) 512K x 36	(1) 512K x 36	(1) 512K x 36
6MB	(1) 512K x 36	(1) 1M x 36	NONE
8MB	(1) 2M x 36	NONE	NONE
8MB	(1) 1M x 36	(1) 1M x 36	NONE

Continued on next page. . .

WYSE TECHNOLOGY, INC.  
WYSE FORTE GSV

... continued from previous page

DRAM CONFIGURATION (CON'T)			
Size	Bank 0	Bank 1	Bank 2
10MB	(1) 512K x 36	(1) 2M x 36	NONE
12MB	(1) 512K x 36	(1) 512K x 36	(1) 2M x 36
12MB	(1) 1M x 36	(1) 2M x 36	NONE
14MB	(1) 512K x 36	(1) 1M x 36	(1) 2M x 36
16MB	(1) 1M x 36	(1) 1M x 36	(1) 2M x 36
16MB	(1) 2M x 36	(1) 2M x 36	NONE
16MB	(1) 4M x 36	NONE	NONE
18MB	(1) 512K x 36	(1) 2M x 36	(1) 2M x 36
18MB	(1) 512K x 36	(1) 4M x 36	NONE
20MB	(1) 1M x 36	(1) 2M x 36	(1) 2M x 36
20MB	(1) 1M x 36	(1) 4M x 36	NONE
24MB	(1) 2M x 36	(1) 4M x 36	NONE
24MB	(1) 2M x 36	(1) 2M x 36	(1) 2M x 36
32MB	(1) 8M x 36	NONE	NONE
32MB	(1) 4M x 36	(1) 4M x 36	NONE
34MB	(1) 512K x 36	(1) 8M x 36	NONE
36MB	(1) 512K x 36	(1) 512K x 36	(1) 8M x 36
36MB	(1) 1M x 36	(1) 8M x 36	NONE
38MB	(1) 512K x 36	(1) 1M x 36	(1) 8M x 36
40MB	(1) 2M x 36	(1) 8M x 36	NONE
40MB	(1) 1M x 36	(1) 1M x 36	(1) 8M x 36
42MB	(1) 512K x 36	(1) 2M x 36	(1) 8M x 36
44MB	(1) 1M x 36	(1) 2M x 36	(1) 8M x 36
48MB	(1) 2M x 36	(1) 2M x 36	(1) 8M x 36
50MB	(1) 512K x 36	(1) 4M x 36	(1) 8M x 36
52MB	(1) 1M x 36	(1) 4M x 36	(1) 8M x 36
56MB	(1) 2M x 36	(1) 4M x 36	(1) 8M x 36
64MB	(1) 8M x 36	(1) 8M x 36	NONE
64MB	(1) 4M x 36	(1) 4M x 36	(1) 8M x 36
66MB	(1) 512K x 36	(1) 8M x 36	(1) 8M x 36
68MB	(1) 1M x 36	(1) 8M x 36	(1) 8M x 36
72MB	(1) 2M x 36	(1) 8M x 36	(1) 8M x 36
80MB	(1) 4M x 36	(1) 8M x 36	(1) 8M x 36
96MB	(1) 8M x 36	(1) 8M x 36	(1) 8M x 36

CACHE CONFIGURATION (80486 ONLY)		
Size	Bank 0 (sockets 5 - 8)	Bank 1 (sockets 5 - 8)
256KB	(4) 32K x 8	(4) 32K x 8
512KB	(4) 64K x 8	(4) 64K x 8
1MB	(4) 128K x 8	(4) 128K x 8

Continued on next page...

**WYSE TECHNOLOGY, INC.**  
**WYSE FORTE GSV**

... continued from previous page

CACHE JUMPER CONFIGURATION (80486 ONLY)						
Size	J36	J37	J38	J39	J40	
256KB	1 & 2	1 & 2	2 & 3	Open	Open	
512KB	1 & 2	1 & 2	2 & 3	1 & 2	2 & 3	
1MB	1 & 2	1 & 2	2 & 3	2 & 3	1 & 2	

Note: Pins designated should be in the closed position.

CACHE JUMPER CONFIGURATION (80486 ONLY, CON'T)						
Size	J41	J42	J43	J44	J45	J46
256KB	2 & 3	2 & 4	Open	1 & 2	Open	1 & 2
512KB	2 & 3	2 & 3	Open	1 & 2	1 & 2	1 & 2
1MB	2 & 3	2 & 3	1 & 2	1 & 2	1 & 2	1 & 2

Note: Pins designated should be in the closed position.

CACHE CONFIGURATION (PENTIUM ONLY)		
Size	Bank 0	Bank 1
512KB	(8) 32K x 8	(8) 32K x 8
1MB	(8) 64K x 8	(8) 64K x 8
2MB	(8) 128K x 8	(8) 128K x 8

CACHE JUMPER CONFIGURATION (PENTIUM ONLY)						
Size	J36	J37	J38	J39	J40	
512KB	2 & 3	2 & 3	1 & 2	Open	Open	
1MB	2 & 3	2 & 3	1 & 2	2 & 3	1 & 2	
2MB	2 & 3	2 & 3	1 & 2	2 & 3	1 & 2	

Note: Pins designated should be in the closed position.

CACHE JUMPER CONFIGURATION (PENTIUM ONLY, CON'T)						
Size	J41	J42	J43	J44	J45	J46
512KB	2 & 3	2 & 3	Open	Open	Closed	Closed
1MB	2 & 3	2 & 3	Open	2 & 3	Closed	Closed
2MB	2 & 3	2 & 3	2 & 3	2 & 3	Closed	Closed

Note: Pins designated should be in the closed position.

CPU TYPE CONFIGURATION							
Type	J1	J2	J3	J5	J6	J7	J8
80486SX	1 & 2	1 & 2	Open	Open	Open	Open	1 & 2
80486DX	2 & 3	1 & 2	1 & 2	1 & 2	Open	Open	1 & 2
80486DX2	2 & 3	1 & 2	1 & 2	1 & 2	Open	Open	1 & 2
Pentium	Open	Open	Open	Open	Open	Open	2 & 3

Note: Pins designated should be in the closed position.

Continued on next page...

# WYSE TECHNOLOGY, INC.

## WYSE FORTE GSV

... continued from previous page

CPU TYPE CONFIGURATION (CON'T)							
Type	J9	J11	J23	J29	J30	J48	JY8
80486SX	Open	Open	1 & 2	1 & 2	1 & 2	Open	2 & 3
80486DX	Open	Open	1 & 2	1 & 2	1 & 2	Open	2 & 3
80486DX2	Open	Open	1 & 2	1 & 2	1 & 2	Open	2 & 3
Pentium	Open	Open	2 & 3	Open	Open	1 & 2	1 & 2

Note: Pins designated should be in the closed position.

CPU SPEED CONFIGURATION				
Speed	J15	J16	J17	J18
25MHz	pins 2 & 3 closed	Closed	Closed	Open
33MHz	pins 2 & 3 closed	Open	Closed	Open
40MHz	pins 2 & 3 closed	Open	Open	Closed
50iMHz	pins 2 & 3 closed	Closed	Closed	Open
50MHz	pins 2 & 3 closed	Open	Open	Open
60MHz	pins 1 & 2 closed	Closed	Closed	Closed
66iMHz	pins 2 & 3 closed	Open	Closed	Open

AT BUS SPEED CONFIGURATION			
Local bus speed	AT bus speed	J49	J50
25MHz	8.33MHz	Open	Closed
33MHz	8.25MHz	Closed	Open

VESA WAIT STATE CONFIGURATION	
Wait states	J25
0 wait states	Open
1 wait state	Closed

DMA CONFIGURATION		
DMA	J33	J34
DMA 1	pins 1 & 2 closed	pins 1 & 2 closed
DMA 3	pins 2 & 3 closed	pins 2 & 3 closed

ETHERNET I/O ADDRESS CONFIGURATION	
I/O address	J67
300hex	pins 3 & 4, 5 & 6 closed
320hex	pins 5 & 6 closed
360hex	pins 3 & 4 closed
360hex	All open
Boot PROM enabled	pins 1 & 2 closed

Continued on next page. . .

**WYSE TECHNOLOGY, INC.**  
**WYSE FORTE GSV***... continued from previous page*

ETHERNET INTERRUPT CONFIGURATION	
IRQ	J68
IRQ3	pins 1 & 2 closed
IRQ4	pins 3 & 4 closed
IRQ5	pins 5 & 6 closed
IRQ9	pins 7 & 8 closed

ETHERNET DMA CONFIGURATION	
DMA	J71
DMA3	pins 1 & 2, 3 & 4 closed
DMA4	pins 5 & 6, 7 & 8 closed
DMA5	pins 9 & 10, 11 & 12 closed
DMA7	pins 13 & 14, 15 & 16 closed