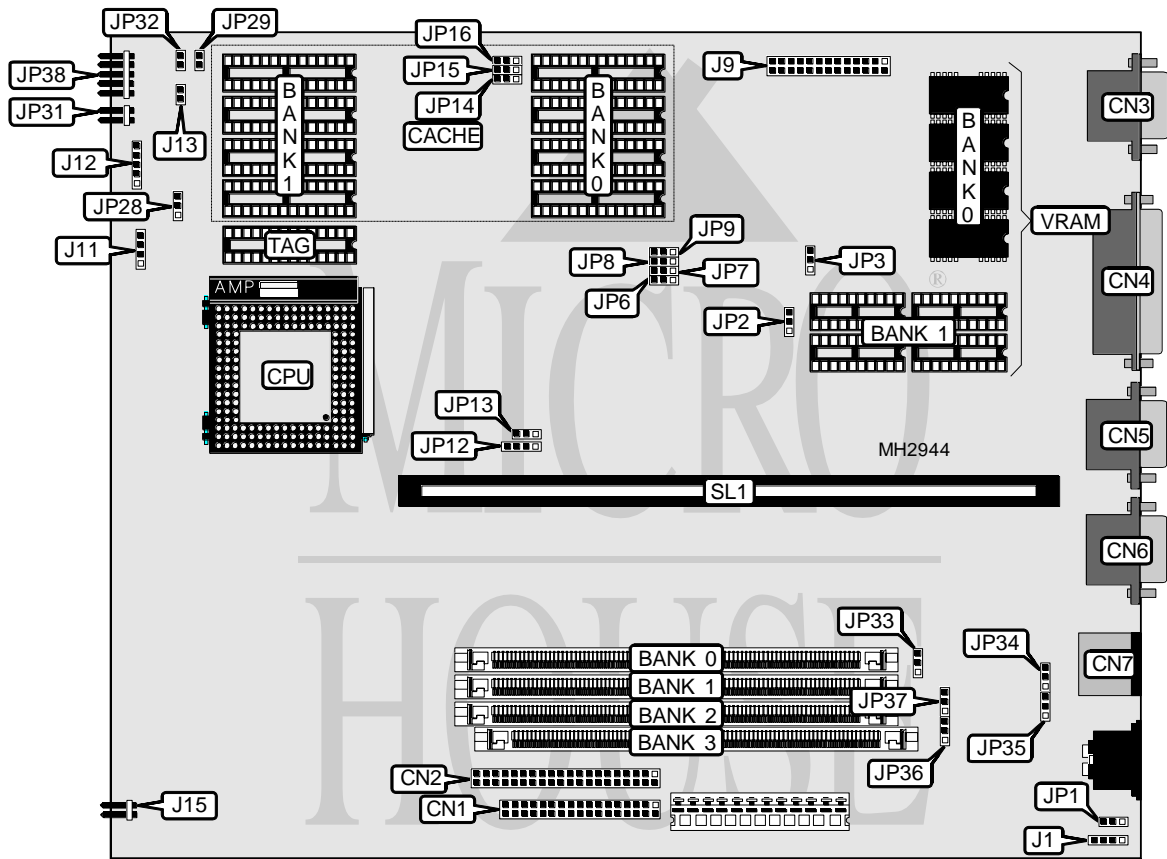


WYSE TECHNOLOGY, INC. WYSE DECISION 486GSI

Processor	80486SX/80487SX/80486DX/80486DX2/Pentium Overdrive
Processor Speed	25/33/50(internal)/50/66(internal)MHz
Chip Set	Unidentified
Max. Onboard DRAM	64MB
Cache	128/256KB
BIOS	Unidentified
Dimensions	254mm x 218mm
I/O Options	PS/2 mouse port, parallel port, serial ports (2), VGA port, VGA feature connector, floppy drive interface, IDE interface, riser slot
NPU Options	None



CONNECTIONS			
Purpose	Location	Purpose	Location
Floppy drive interface	CN1	Speaker	J11
IDE interface	CN2	Power LED & keylock	J12
VGA port	CN3	Reset switch	J13
Parallel port	CN4	Chassis fan power	J15
Serial port 1	CN5	Turbo LED	JP29
Serial port 2	CN6	IDE interface LED	JP31
PS/2 mouse port	CN7	Turbo switch	JP32
External battery	J1	LED connector	JP38 pins 3 - 10
VGA feature connector	J9	Riser Card	SL1

Continued on next page . . .

WYSE TECHNOLOGY, INC.
WYSE DECISION 486GSI

... continued from previous page

USER CONFIGURABLE SETTINGS		
Function	Jumper	Position
í Battery type select internal	JP1	pins 1 & 2 closed
Battery type select external	JP1	Open
CMOS memory clear	JP1	pins 2 & 3 closed
í VGA controller enabled	JP2	pins 1 & 2 closed
VGA controller disabled	JP2	pins 2 & 3 closed
í VGA IRQ9 enabled	JP3	pins 1 & 2 closed
VGA IRQ9 disabled	JP3	pins 2 & 3 closed
í Speaker type select internal	JP28	pins 2 & 3 closed
Speaker type select external	JP28	pins 1 & 2 closed
í Turbo LED enabled	JP29	pins 1 & 2 closed
Turbo LED disabled	JP29	pins 2 & 3 closed
í Turbo switch enabled	JP32	pins 1 & 2 closed
Turbo enabled disabled	JP32	pins 2 & 3 closed
í Parallel port enabled	JP33	pins 1 & 2 closed
Parallel port disabled	JP33	pins 2 & 3 closed
í IDE interface enabled	JP34	pins 1 & 2 closed
IDE interface disabled	JP34	pins 2 & 3 closed
í Floppy drive interface enabled	JP35	pins 1 & 2 closed
Floppy drive interface disabled	JP35	pins 2 & 3 closed
í Serial port 1 enabled	JP36	pins 1 & 2 closed
Serial port 1 disabled	JP36	pins 2 & 3 closed
í Serial port 2 enabled	JP37	pins 1 & 2 closed
Serial port 2 disabled	JP37	pins 2 & 3 closed

DRAM CONFIGURATION				
Size	Bank 0	Bank 1	Bank 2	Bank 3
4MB	(1) 1M x 36	NONE	NONE	NONE
5MB	(1) 1M x 36	(1) 256K x 36	NONE	NONE
6MB	(1) 1M x 36	(1) 256K x 36	(1) 256K x 36	NONE
7MB	(1) 1M x 36	(1) 256K x 36	(1) 256K x 36	(1) 256K x 36
8MB	(1) 1M x 36	(1) 1M x 36	NONE	NONE
9MB	(1) 1M x 36	(1) 1M x 36	(1) 256K x 36	NONE
10MB	(1) 1M x 36	(1) 1M x 36	(1) 256K x 36	(1) 256K x 36
12MB	(1) 1M x 36	(1) 1M x 36	(1) 1M x 36	NONE
13MB	(1) 1M x 36	(1) 1M x 36	(1) 1M x 36	(1) 256K x 36
16MB	(1) 1M x 36	(1) 1M x 36	(1) 1M x 36	(1) 1M x 36
16MB	(1) 4M x 36	NONE	NONE	NONE
17MB	(1) 4M x 36	(1) 256K x 36	NONE	NONE
18MB	(1) 4M x 36	(1) 256K x 36	(1) 256K x 36	NONE
19MB	(1) 4M x 36	(1) 256K x 36	(1) 256K x 36	(1) 256K x 36
20MB	(1) 4M x 36	(1) 1M x 36	NONE	NONE
21MB	(1) 4M x 36	(1) 1M x 36	(1) 256K x 36	NONE
22MB	(1) 4M x 36	(1) 1M x 36	(1) 256K x 36	(1) 256K x 36
24MB	(1) 4M x 36	(1) 1M x 36	(1) 1M x 36	NONE

Continued on next page...

WYSE TECHNOLOGY, INC.

WYSE DECISION 486GSI

... continued from previous page

DRAM CONFIGURATION (CON'T)				
Size	Bank 0	Bank 1	Bank 2	Bank 3
25MB	(1) 4M x 36	(1) 1M x 36	(1) 1M x 36	(1) 256K x 36
28MB	(1) 4M x 36	(1) 1M x 36	(1) 1M x 36	(1) 1M x 36
32MB	(1) 4M x 36	(1) 4M x 36	NONE	NONE
33MB	(1) 4M x 36	(1) 4M x 36	(1) 256K x 36	NONE
34MB	(1) 4M x 36	(1) 4M x 36	(1) 256K x 36	(1) 256K x 36
36MB	(1) 4M x 36	(1) 4M x 36	(1) 1M x 36	NONE
37MB	(1) 4M x 36	(1) 4M x 36	(1) 1M x 36	(1) 256K x 36
40MB	(1) 4M x 36	(1) 4M x 36	(1) 1M x 36	(1) 1M x 36
48MB	(1) 4M x 36	(1) 4M x 36	(1) 4M x 36	NONE
49MB	(1) 4M x 36	(1) 4M x 36	(1) 4M x 36	(1) 256K x 36
52MB	(1) 4M x 36	(1) 4M x 36	(1) 4M x 36	(1) 1M x 36
64MB	(1) 4M x 36	(1) 4M x 36	(1) 4M x 36	(1) 4M x 36

CACHE CONFIGURATION			
Size	Bank 0	Bank 1	TAG
128KB	(4) 32K x 8	NONE	(1) 8K x 8
256KB	(4) 32K x 8	(4) 32K x 8	(1) 32K x 8

CACHE JUMPER CONFIGURATION				
Size	JP6	JP7	JP8	JP9
None	Open	Open	Open	Open
128KB	pins 2 & 3 closed	pins 1 & 2 closed	pins 2 & 3 closed	pins 2 & 3 closed
256KB	pins 1 & 2 closed	pins 1 & 2 closed	pins 1 & 2 closed	pins 1 & 2 closed

CPU TYPE CONFIGURATION		
Type	JP12	JP13
80486SX	pins 2 & 3 closed	Open
80487SX	pins 1 & 2, 3 & 4 closed	pins 1 & 2 closed
80486DX	pins 1 & 2, 3 & 4 closed	pins 2 & 3 closed
80486DX2	pins 1 & 2, 3 & 4 closed	pins 2 & 3 closed
Pentium Overdrive	pins 1 & 2, 3 & 4 closed	pins 2 & 3 closed

CPU SPEED CONFIGURATION			
Speed	JP14	JP15	JP16
25MHz	pins 2 & 3 closed	pins 2 & 3 closed	pins 1 & 2 closed
33MHz	pins 1 & 2 closed	pins 2 & 3 closed	pins 1 & 2 closed
50iMHz	pins 2 & 3 closed	pins 2 & 3 closed	pins 1 & 2 closed
50MHz	pins 1 & 2 closed	pins 1 & 2 closed	pins 1 & 2 closed
66iMHz	pins 1 & 2 closed	pins 2 & 3 closed	pins 1 & 2 closed

VRAM CONFIGURATION		
Size	Bank 0	Bank 1
512KB	(4) 256K x 4	NONE
1MB	(4) 256K x 4	(4) 256K x 4