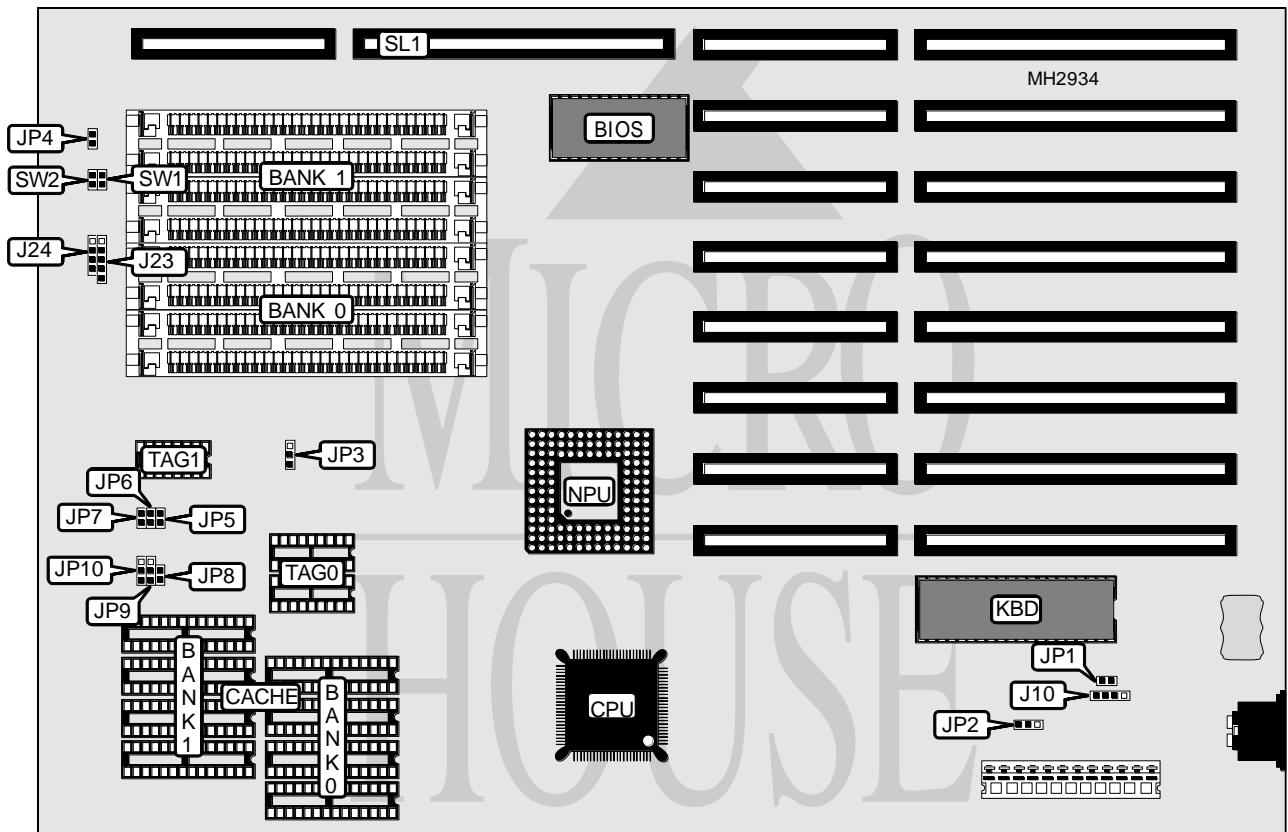


POSITIVE CORPORATION P C 3 4 0

Processor 80386DX
Processor Speed 33/40MHz
Chip Set OPTI
Max. Onboard DRAM 64MB
Cache 32/64/128/256KB
BIOS AMI/MR
Dimensions 330mm x 218mm
I/O Options External memory card
NPU Options 80387DX/3167



CONNECTIONS			
Purpose	Location	Purpose	Location
External battery	J10	External memory card	SL1
Power LED & keylock	J23	Reset switch	SW1
Speaker	J24	Turbo switch	SW2
Turbo LED	JP4		

Continued on next page. . .

POSITIVE CORPORATION

PC340

... continued from previous page

USER CONFIGURABLE SETTINGS		
Function	Jumper	Position
í Password disabled (MR BIOS only)	JP1	Open
Password enabled (MR BIOS only)	JP1	Closed
í CMOS memory normal operation	JP2	pins 2 & 3 closed
CMOS memory clear	JP2	pins 1 & 2 closed
í I/O bus speed select ATCLK/6	JP3	Open
I/O bus speed select ATCLK/8	JP3	Closed

DRAM CONFIGURATION				
Size	Bank 0	Bank 1	Bank 2	Bank 3
1MB	(4) 256K x 9	NONE	NONE	NONE
2MB	(4) 256K x 9	(4) 256K x 9	NONE	NONE
4MB	(4) 1M x 9	NONE	NONE	NONE
5MB	(4) 256K x 9	(4) 1M x 9	NONE	NONE
8MB	(4) 1M x 9	(4) 1M x 9	NONE	NONE
12MB	(4) 1M x 9	(4) 1M x 9	(4) 1M x 9	NONE
16MB	(4) 1M x 9	(4) 1M x 9	(4) 1M x 9	(4) 1M x 9
16MB	(4) 4M x 9	NONE	NONE	NONE
20MB	(4) 1M x 9	(4) 4M x 9	NONE	NONE
20MB	(4) 4M x 9	(4) 1M x 9	NONE	NONE
24MB	(4) 1M x 9	(4) 1M x 9	(4) 4M x 9	NONE
24MB	(4) 1M x 9	(4) 4M x 9	(4) 1M x 9	NONE
24MB	(4) 4M x 9	(4) 1M x 9	(4) 1M x 9	NONE
28MB	(4) 1M x 9	(4) 1M x 9	(4) 4M x 9	(4) 1M x 9
28MB	(4) 1M x 9	(4) 4M x 9	(4) 1M x 9	(4) 1M x 9
28MB	(4) 4M x 9	(4) 1M x 9	(4) 1M x 9	(4) 1M x 9
32MB	(4) 4M x 9	(4) 4M x 9	NONE	NONE
36MB	(4) 1M x 9	(4) 4M x 9	(4) 4M x 9	NONE
36MB	(4) 4M x 9	(4) 1M x 9	(4) 4M x 9	NONE
36MB	(4) 4M x 9	(4) 4M x 9	(4) 1M x 9	NONE
40MB	(4) 1M x 9	(4) 1M x 9	(4) 4M x 9	(4) 4M x 9
40MB	(4) 1M x 9	(4) 4M x 9	(4) 4M x 9	(4) 1M x 9
40MB	(4) 4M x 9	(4) 1M x 9	(4) 4M x 9	(4) 1M x 9
40MB	(4) 4M x 9	(4) 4M x 9	(4) 1M x 9	(4) 1M x 9
48MB	(4) 4M x 9	(4) 4M x 9	(4) 4M x 9	NONE
52MB	(4) 1M x 9	(4) 4M x 9	(4) 4M x 9	(4) 4M x 9
52MB	(4) 4M x 9	(4) 1M x 9	(4) 4M x 9	(4) 4M x 9
52MB	(4) 4M x 9	(4) 4M x 9	(4) 4M x 9	(4) 1M x 9
64MB	(4) 4M x 9	(4) 4M x 9	(4) 4M x 9	(4) 4M x 9

Note: Banks 2 & 3 are located on the external memory card.

Continued on next page. ...

POSITIVE CORPORATION

PC340

... continued from previous page

CACHE CONFIGURATION				
Size	Bank 0	Bank 1	TAG 0	TAG 1
32KB	(4) 8K x 8	NONE	(2) 16K x 4	(1) 16K x 1
64KB	(4) 8K x 8	(4) 8K x 8	(2) 16K x 4	(1) 16K x 1
128KB	(4) 32K x 8	NONE	(2) 16K x 4	(1) 16K x 1
256KB	(4) 32K x 8	(4) 32K x 8	(2) 16K x 4	(1) 16K x 1

CACHE JUMPER CONFIGURATION						
Size	JP5	JP6	JP7	JP8	JP9	JP10
32KB	1 & 2	1 & 2	1 & 2	Open	2 & 3	2 & 3
64KB	2 & 3	1 & 2	1 & 2	Open	2 & 3	1 & 2
128KB	2 & 3	1 & 2	2 & 3	Closed	2 & 3	1 & 2
256KB	2 & 3	2 & 3	2 & 3	Closed	1 & 2	1 & 2

Note: Pins designated should be in the closed position.