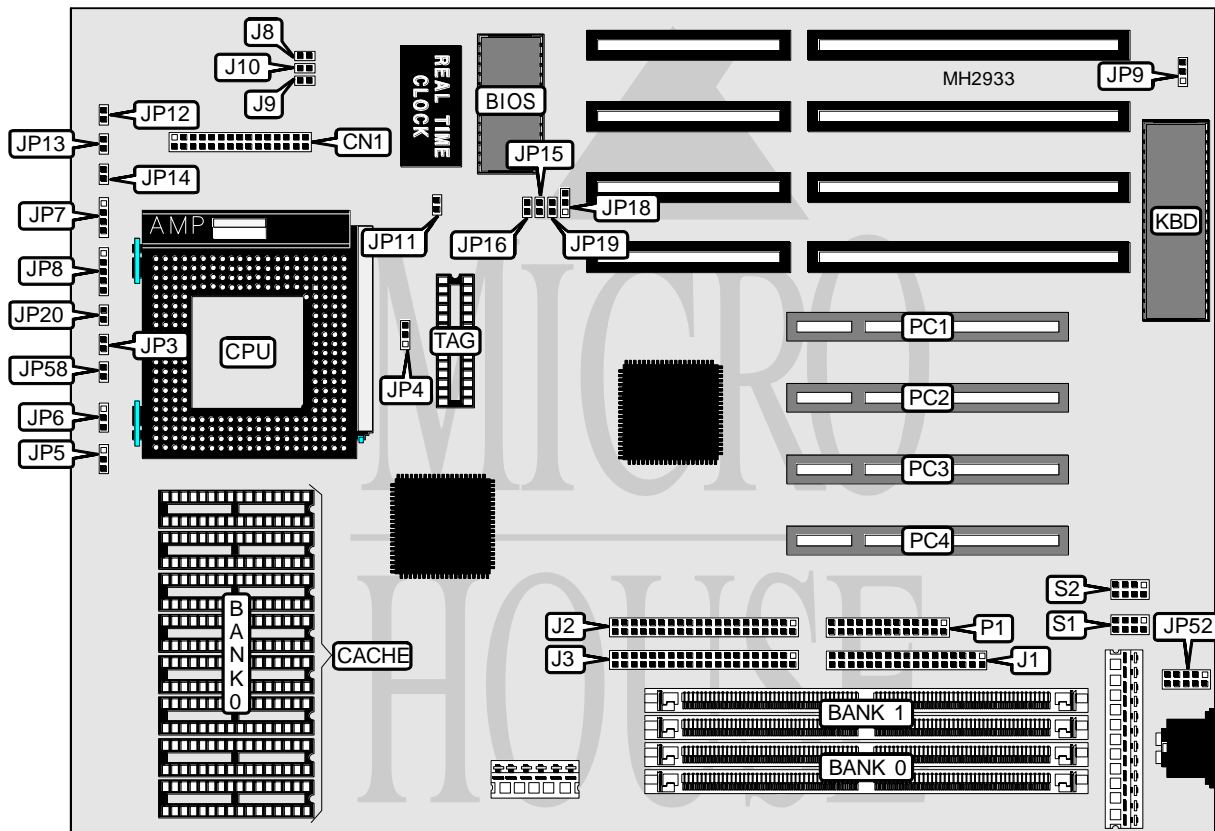


SHUTTLE COMPUTER INTERNATIONAL, INC.

HOT-541

Processor	Pentium
Processor Speed	75/90/100/120/133/150/180MHz
Chip Set	Intel
Max. Onboard DRAM	128MB
Cache	256/512KB
BIOS	Award
Dimensions	280mm x 220mm
I/O Options	PS/2 mouse port, parallel port, serial ports (2), 32-bit PCI slots (4), green PC connector, floppy drive interface, IDE interfaces (2), VRM connector
NPU Options	None



CONNECTIONS			
Purpose	Location	Purpose	Location
VRM connector	CN1	Turbo LED	JP14
Floppy drive interface	J1	Green PC connector	JP19
IDE interface 2	J2	IDE interface LED	JP20
IDE interface 1	J3	PS/2 mouse port	JP52
Speaker	JP7	Parallel port	P1
Power LED & keylock	JP8	32-bit PCI slots	PC1 - PC4
Reset switch	JP12	Serial port 2	S1
Turbo switch	JP13	Serial port 1	S2

Continued on next page. . .

SHUTTLE COMPUTER INTERNATIONAL, INC.

HOT - 5 4 1

... continued from previous page

USER CONFIGURABLE SETTINGS		
Function	Jumper	Position
í Flash BIOS voltage select 5v	JP9	pins 1 & 2 closed
Flash BIOS voltage select 12v	JP9	pins 2 & 3 closed
í CMOS memory normal operation	JP11	Open
CMOS memory clear	JP11	Closed

DRAM CONFIGURATION		
Size	Bank 0	Bank 1
8MB	(2) 1M x 36	NONE
8MB	NONE	(2) 1M x 36
16MB	(2) 2M x 36	NONE
16MB	NONE	(2) 2M x 36
16MB	(2) 1M x 36	(2) 1M x 36
24MB	(2) 1M x 36	(2) 2M x 36
24MB	(2) 2M x 36	(2) 1M x 36
32MB	(2) 4M x 36	NONE
32MB	NONE	(2) 4M x 36
32MB	(2) 2M x 36	(2) 2M x 36
40MB	(2) 1M x 36	(2) 4M x 36
40MB	(2) 4M x 36	(2) 1M x 36
48MB	(2) 2M x 36	(2) 4M x 36
48MB	(2) 4M x 36	(2) 2M x 36
64MB	(2) 8M x 36	NONE
64MB	NONE	(2) 8M x 36
64MB	(2) 4M x 36	(2) 4M x 36
72MB	(2) 1M x 36	(2) 8M x 36
72MB	(2) 8M x 36	(2) 1M x 36
80MB	(2) 2M x 36	(2) 8M x 36
80MB	(2) 8M x 36	(2) 2M x 36
96MB	(2) 4M x 36	(2) 8M x 36
96MB	(2) 8M x 36	(2) 4M x 36
128MB	(2) 8M x 36	(2) 8M x 36

CACHE CONFIGURATION		
Size	Bank 0	TAG
256KB	(8) 32K x 8	(1) 32K x 8
512KB	(8) 64K x 8	(1) 32K x 8

CACHE JUMPER CONFIGURATION			
Size	JP4	JP5	JP6
None	pins 2 & 3 closed	pins 1 & 2 closed	pins 1 & 2 closed
256KB	pins 2 & 3 closed	pins 2 & 3 closed	pins 1 & 2 closed
512KB	pins 1 & 2 closed	pins 1 & 2 closed	pins 2 & 3 closed

Continued on next page. ...

SHUTTLE COMPUTER INTERNATIONAL, INC.

HOT-541

... continued from previous page

CPU SPEED CONFIGURATION		
System clock	JP15	JP16
50MHz	Open	Open
60MHz	Closed	Closed
66MHz	Closed	Open

CPU BUS CLOCK CONFIGURATION		
System clock	AT bus clock	JP18
50MHz	6.25MHz	pins 2 & 3 closed
50MHz	8.33MHz	pins 1 & 2 closed
60MHz	7.50MHz	pins 2 & 3 closed
60MHz	10.0MHz	pins 1 & 2 closed
66MHz	8.25MHz	pins 2 & 3 closed
66MHz	11.0MHz	pins 1 & 2 closed

CPU BUS RATIO CONFIGURATION			
Bus/core ratio	CQA/fraction	JP3	JP58
2/3	50MHz/75MHz	Open	Open
2/3	60MHz/90MHz	Open	Open
2/3	66MHz/100MHz	Open	Open
1/2	50MHz/100MHz	Closed	Open
1/2	60MHz/120MHz	Closed	Open
1/2	66MHz/133MHz	Closed	Open
1/3	33MHz/100MHz	Open	Closed
1/3	50MHz/150MHz	Open	Closed
1/3	60MHz/180MHz	Open	Closed

CPU VOLTAGE CONFIGURATION			
Voltage	J8	J9	J10
3.3v	Open	Closed	Open
3.45v	Open	Open	Closed
3.6v	Closed	Open	Open