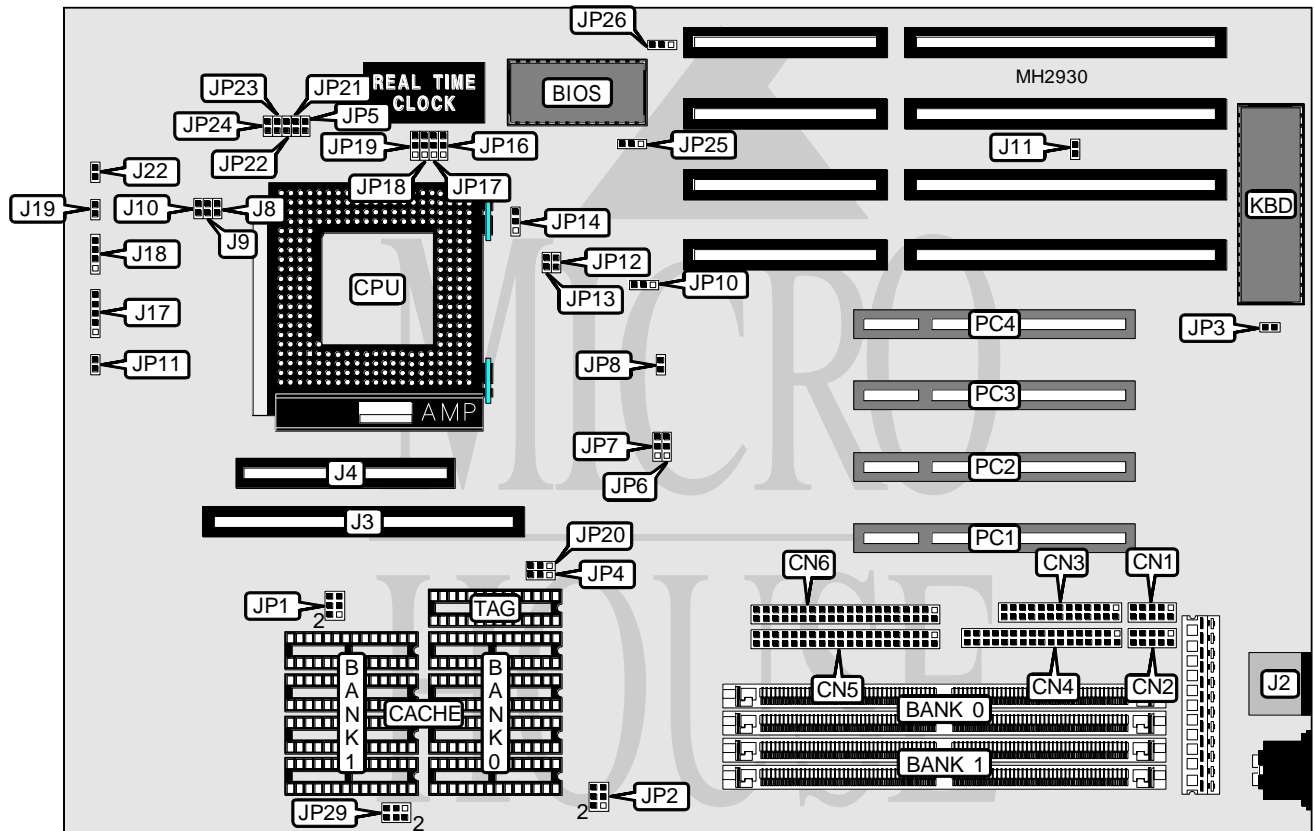


SOYO COMPUTER CO., LTD.

SY-5TC2/C5

Processor Pentium
Processor Speed 75/90/100/120/133/150MHz
Chip Set Intel
Max. Onboard DRAM 128MB
Cache 256/512KB
BIOS Award
Dimensions 330mm x 218mm
I/O Options PS/2 mouse port, parallel port, serial ports (2), 32-bit PCI slots (4), floppy drive interface, IDE interface, green PC connector
NPU Options None



CONNECTIONS			
Purpose	Location	Purpose	Location
Serial port 1	CN1	VRM slot	J4
Serial port 2	CN2	Power LED & keylock	J17
Parallel port	CN3	Speaker	J18
Floppy drive interface	CN4	Reset switch	J19
IDE interface 1	CN5	Turbo LED	J22
IDE interface 2	CN6	Green PC connector	JP8
PS/2 mouse port	J2	IDE interface LED	JP11
External cache slot	J3	32-bit PCI slots	PC1 - PC4

Continued on next page. . .

SOYO COMPUTER CO., LTD.
SY-5TC2/C5

... continued from previous page

USER CONFIGURABLE SETTINGS		
Function	Jumper	Position
í Factory configured - do not alter	J5	N/A
í PS/2 mouse disabled	J11	Open
PS/2 mouse enabled	J11	Closed
í Factory configured - do not alter	JP2	N/A
í Monitor type select color	JP3	Closed
Monitor type select monochrome	JP3	Open
í CMOS memory normal operation	JP5	Open
CMOS memory clear	JP5	Closed
í Factory configured - do not alter	JP6	pins 1 & 2 closed
í Factory configured - do not alter	JP7	pins 1 & 2 closed
í Factory configured - do not alter	JP9	N/A
í Factory configured - do not alter	JP13	Closed
í Factory configured - do not alter	JP14	pins 1 & 2 closed
í Factory configured - do not alter	JP15	N/A
í Factory configured - do not alter	JP18	pins 1 & 2 closed
í Factory configured - do not alter	JP19	pins 2 & 3 closed
í Factory configured - do not alter	JP22	Open
í Pipeline mode enabled	JP23	Closed
Pipeline mode disabled	JP23	Open
í Cache type select write back	JP24	Open
Cache type select write through	JP24	Closed

DRAM CONFIGURATION		
Size	Bank 0	Bank 1
2MB	(2) 256K x 36	NONE
4MB	(2) 512K x 36	NONE
4MB	(2) 256K x 36	(2) 256K x 36
6MB	(2) 512K x 36	(2) 256K x 36
6MB	(2) 256K x 36	(2) 512K x 36
8MB	(2) 1M x 36	NONE
8MB	(2) 512K x 36	(2) 512K x 36
8MB	(2) 1M x 36	NONE
10MB	(2) 1M x 36	(2) 256K x 36
10MB	(2) 256K x 36	(2) 1M x 36
10MB	(2) 1M x 36	(2) 256K x 36
12MB	(2) 1M x 36	(2) 512K x 36
12MB	(2) 512K x 36	(2) 1M x 36
12MB	(2) 1M x 36	(2) 512K x 36
16MB	(2) 1M x 36	(2) 1M x 36
16MB	(2) 1M x 36	(2) 1M x 36
16MB	(2) 2M x 36	NONE
18MB	(2) 256K x 36	(2) 2M x 36
18MB	(2) 2M x 36	(2) 256K x 36
20MB	(2) 512K x 36	(2) 2M x 36

Continued on next page. . .

SOYO COMPUTER CO., LTD.
SY-5TC2/C5

... continued from previous page

DRAM CONFIGURATION (CON'T)		
Size	Bank 0	Bank 1
20MB	(2) 2M x 36	(2) 512K x 36
24MB	(2) 1M x 36	(2) 2M x 36
24MB	(2) 1M x 36	(2) 2M x 36
24MB	(2) 2M x 36	(2) 1M x 36
32MB	(2) 4M x 36	NONE
32MB	(2) 2M x 36	(2) 2M x 36
34MB	(2) 256K x 36	(2) 4M x 36
34MB	(2) 4M x 36	(2) 256K x 36
36MB	(2) 512K x 36	(2) 4M x 36
36MB	(2) 4M x 36	(2) 512K x 36
40MB	(2) 1M x 36	(2) 4M x 36
40MB	(2) 4M x 36	(2) 1M x 36
40MB	(2) 1M x 36	(2) 4M x 36
48MB	(2) 4M x 36	(2) 2M x 36
48MB	(2) 2M x 36	(2) 4M x 36
64MB	(2) 8M x 36	NONE
64MB	(2) 4M x 36	(2) 4M x 36
66MB	(2) 8M x 36	(2) 256K x 36
66MB	(2) 256K x 36	(2) 8M x 36
68MB	(2) 8M x 36	(2) 512K x 36
68MB	(2) 512K x 36	(2) 8M x 36
72MB	(2) 1M x 36	(2) 8M x 36
72MB	(2) 8M x 36	(2) 1M x 36
72MB	(2) 1M x 36	(2) 8M x 36
80MB	(2) 8M x 36	(2) 2M x 36
80MB	(2) 2M x 36	(2) 8M x 36
96MB	(2) 8M x 36	(2) 4M x 36
96MB	(2) 4M x 36	(2) 8M x 36
128MB	(2) 16M x 36	NONE
128MB	(2) 8M x 36	(2) 8M x 36

CACHE CONFIGURATION				
Size	Bank 0	Bank 1	TAG	J3
256KB	(4) 32K x 8	(4) 32K x 8	(1) 8K or (1) 16K x 8	NONE
256KB	NONE	NONE	(1) 8K or (1) 16K x 8	Card installed
512KB	(4) 64K x 8	(4) 64K x 8	(1) 32K x 8	NONE
512KB	NONE	NONE	(1) 32K x 8	Card installed

CACHE JUMPER CONFIGURATION				
Size	JP4	JP16	JP17	JP20
256KB	pins 1 & 2 closed	pins 1 & 2 closed	pins 1 & 2 closed	pins 2 & 3 closed
256KB	pins 1 & 2 closed	pins 1 & 2 closed	pins 1 & 2 closed	pins 2 & 3 closed
512KB	pins 2 & 3 closed	pins 2 & 3 closed	pins 2 & 3 closed	pins 2 & 3 closed
512KB	pins 1 & 2 closed	pins 2 & 3 closed	pins 2 & 3 closed	pins 2 & 3 closed

Continued on next page. . .

SOYO COMPUTER CO., LTD.

SY-5TC2/C5

... continued from previous page

CACHE VOLTAGE CONFIGURATION		
Size	JP1	JP29
3.3v	pins 1 & 2, 3 & 4, 5 & 6 closed	Open
Mixed voltage	Open	pins 1 & 2, 3 & 4, 5 & 6 closed

CPU SPEED CONFIGURATION			
Speed	Bus speed	JP12	JP13
75MHz	50MHz	Open	Open
90MHz	60MHz	Closed	Open
100MHz	66MHz	Closed	Closed
100MHz	50MHz	Open	Open
120MHz	60MHz	Closed	Open
133MHz	66MHz	Closed	Closed
150MHz	60MHz	Closed	Open

AT BUS CLOCK CONFIGURATION	
Speed	JP10
Clock /4	pins 2 & 3 closed
Clock /3	pins 1 & 2 closed

CPU VOLTAGE CONFIGURATION			
Voltage	J8	J9	J10
3.3v	Closed	Open	Open
3.45v - 3.6v	Open	Closed	Open

CPU BUS RATIO CONFIGURATION		
Ratio	JP21	JP22
3/2	Open	Open
2/1	Closed	Open
5/2	Closed	Closed
3/1	Open	Closed

BIOS CONFIGURATION		
DMA	JP25	JP26
EPROM	pins 1 & 2 closed	pins 2 & 3 closed
Flash	pins 2 & 3 closed	pins 1 & 2 closed