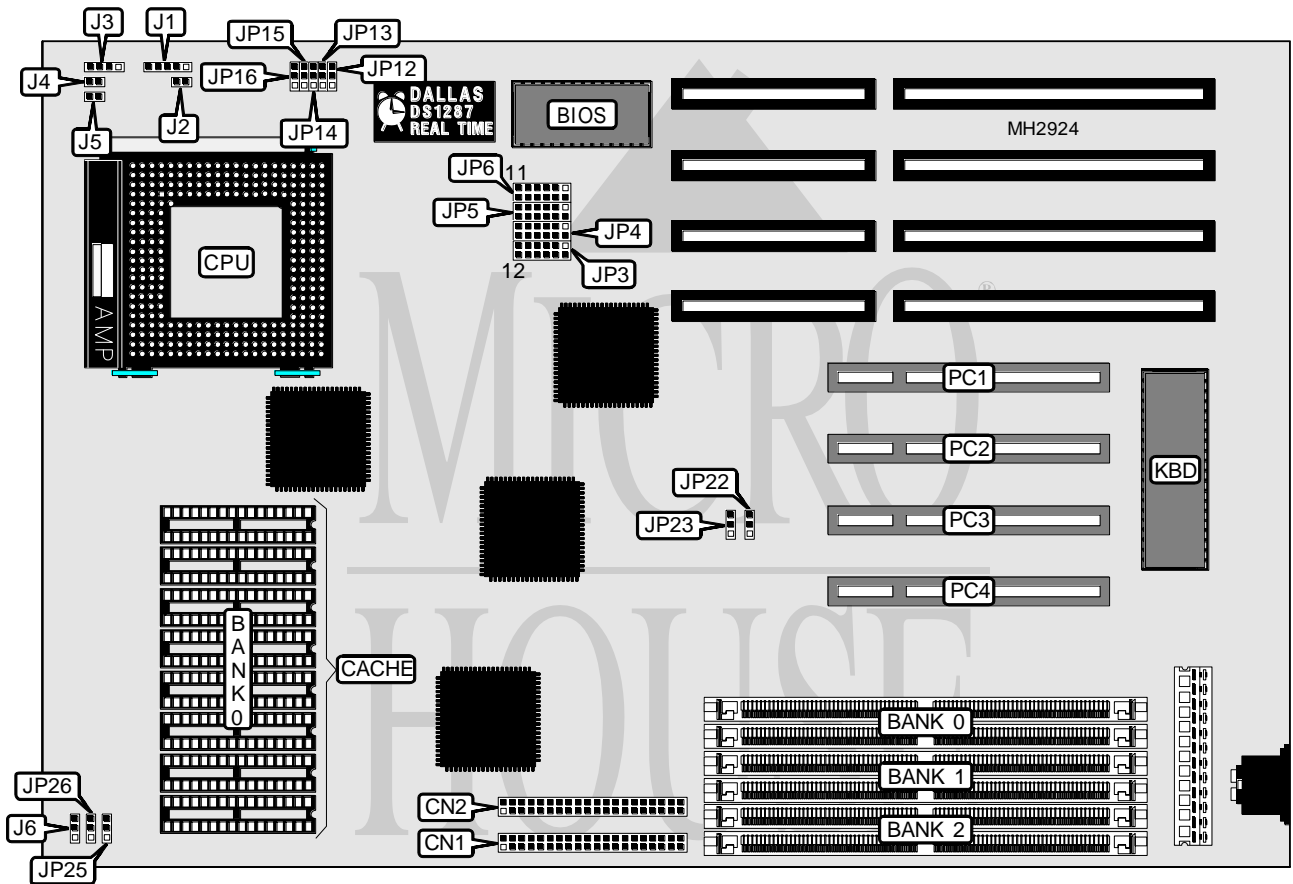


CHAINTECH COMPUTER COMPANY, LTD.

586IP1

Processor	Pentium
Processor Speed	60/66MHz
Chip Set	Intel
Max. Onboard DRAM	192MB
Cache	256/512KB
BIOS	Award
Dimensions	330mm x 218mm
I/O Options	32-bit PCI slots (4), IDE interfaces (2)
NPU Options	None



CONNECTIONS			
Purpose	Location	Purpose	Location
IDE interface 1	CN1	Turbo switch	J4
IDE interface 2	CN2	Turbo LED	J5
Power LED & keylock	J1	IDE interface LED	J6
Reset switch	J2	32-bit PCI slots	PC1 - PC4
Speaker	J3		

Continued on next page. . .

CHAINTECH COMPUTER COMPANY, LTD.

586IP1

... continued from previous page

DRAM CONFIGURATION			
Size	Bank 0	Bank 1	Bank 2
2MB	(2) 256K x 36	NONE	NONE
4MB	(2) 256K x 36	(2) 256K x 36	NONE
4MB	(2) 512K x 36	NONE	NONE
6MB	(2) 256K x 36	(2) 256K x 36	(2) 256K x 36
6MB	(2) 256K x 36	(2) 512K x 36	NONE
8MB	(2) 256K x 36	(2) 256K x 36	(2) 512K x 36
8MB	(2) 512K x 36	(2) 512K x 36	NONE
8MB	(2) 1M x 36	NONE	NONE
10MB	(2) 256K x 36	(2) 512K x 36	(2) 512K x 36
10MB	(2) 256K x 36	(2) 1M x 36	NONE
12MB	(2) 256K x 36	(2) 256K x 36	(2) 1M x 36
12MB	(2) 512K x 36	(2) 512K x 36	(2) 512K x 36
12MB	(2) 512K x 36	(2) 1M x 36	NONE
14MB	(2) 256K x 36	(2) 512K x 36	(2) 1M x 36
16MB	(2) 512K x 36	(2) 512K x 36	(2) 1M x 36
16MB	(2) 1M x 36	(2) 1M x 36	NONE
16MB	(2) 2M x 36	NONE	NONE
18MB	(2) 256K x 36	(2) 1M x 36	(2) 1M x 36
18MB	(2) 256K x 36	(2) 2M x 36	NONE
20MB	(2) 256K x 36	(2) 256K x 36	(2) 2M x 36
20MB	(2) 512K x 36	(2) 1M x 36	(2) 1M x 36
20MB	(2) 512K x 36	(2) 2M x 36	NONE
22MB	(2) 256K x 36	(2) 512K x 36	(2) 2M x 36
24MB	(2) 1M x 36	(2) 1M x 36	(2) 1M x 36
24MB	(2) 1M x 36	(2) 2M x 36	NONE
26MB	(2) 256K x 36	(2) 1M x 36	(2) 2M x 36
28MB	(2) 512K x 36	(2) 1M x 36	(2) 2M x 36
32MB	(2) 1M x 36	(2) 1M x 36	(2) 2M x 36
32MB	(2) 2M x 36	(2) 2M x 36	NONE
32MB	(2) 4M x 36	NONE	NONE
34MB	(2) 256K x 36	(2) 2M x 36	(2) 2M x 36
34MB	(2) 256K x 36	(2) 4M x 36	NONE
36MB	(2) 256K x 36	(2) 256K x 36	(2) 4M x 36
36MB	(2) 512K x 36	(2) 2M x 36	(2) 2M x 36
36MB	(2) 512K x 36	(2) 4M x 36	NONE
38MB	(2) 256K x 36	(2) 512K x 36	(2) 4M x 36
40MB	(2) 512K x 36	(2) 512K x 36	(2) 4M x 36
40MB	(2) 1M x 36	(2) 2M x 36	(2) 2M x 36
40MB	(2) 1M x 36	(2) 4M x 36	NONE
42MB	(2) 256K x 36	(2) 1M x 36	(2) 4M x 36
44MB	(2) 512K x 36	(2) 1M x 36	(2) 4M x 36
48MB	(2) 1M x 36	(2) 1M x 36	(2) 4M x 36

Continued on next page...

CHAINTECH COMPUTER COMPANY, LTD.

586IP1

... continued from previous page

DRAM CONFIGURATION (CON'T)			
Size	Bank 0	Bank 1	Bank 2
48MB	(2) 2M x 36	(2) 2M x 36	(2) 2M x 36
48MB	(2) 2M x 36	(2) 4M x 36	NONE
50MB	(2) 256K x 36	(2) 2M x 36	(2) 4M x 36
52MB	(2) 512K x 36	(2) 2M x 36	(2) 4M x 36
56MB	(2) 1M x 36	(2) 2M x 36	(2) 4M x 36
64MB	(2) 2M x 36	(2) 2M x 36	(2) 4M x 36
64MB	(2) 4M x 36	(2) 4M x 36	NONE
64MB	(2) 8M x 36	NONE	NONE
66MB	(2) 256K x 36	(2) 4M x 36	(2) 4M x 36
66MB	(2) 256K x 36	(2) 8M x 36	NONE
68MB	(2) 256K x 36	(2) 256K x 36	(2) 8M x 36
68MB	(2) 512K x 36	(2) 4M x 36	(2) 4M x 36
68MB	(2) 512K x 36	(2) 8M x 36	NONE
70MB	(2) 256K x 36	(2) 512K x 36	(2) 8M x 36
72MB	(2) 512K x 36	(2) 512K x 36	(2) 8M x 36
72MB	(2) 1M x 36	(2) 4M x 36	(2) 4M x 36
72MB	(2) 1M x 36	(2) 8M x 36	NONE
74MB	(2) 256K x 36	(2) 1M x 36	(2) 8M x 36
74MB	(2) 512K x 36	(2) 1M x 36	(2) 8M x 36
80MB	(2) 1M x 36	(2) 1M x 36	(2) 8M x 36
80MB	(2) 2M x 36	(2) 8M x 36	NONE
80MB	(2) 2M x 36	(2) 4M x 36	(2) 4M x 36
82MB	(2) 256K x 36	(2) 2M x 36	(2) 8M x 36
84MB	(2) 512K x 36	(2) 2M x 36	(2) 8M x 36
88MB	(2) 1M x 36	(2) 2M x 36	(2) 8M x 36
96MB	(2) 2M x 36	(2) 2M x 36	(2) 8M x 36
96MB	(2) 4M x 36	(2) 4M x 36	(2) 4M x 36
98MB	(2) 256K x 36	(2) 4M x 36	(2) 8M x 36
100MB	(2) 512K x 36	(2) 4M x 36	(2) 8M x 36
104MB	(2) 1M x 36	(2) 4M x 36	(2) 8M x 36
112MB	(2) 2M x 36	(2) 4M x 36	(2) 8M x 36
128MB	(2) 8M x 36	(2) 8M x 36	NONE
130MB	(2) 256K x 36	(2) 8M x 36	(2) 8M x 36
132MB	(2) 512K x 36	(2) 8M x 36	(2) 8M x 36
136MB	(2) 1M x 36	(2) 8M x 36	(2) 8M x 36
164MB	(2) 4M x 36	(2) 8M x 36	(2) 8M x 36
192MB	(2) 8M x 36	(2) 8M x 36	(2) 8M x 36

CACHE CONFIGURATION	
Size	Bank 0
256KB	(8) 32K x 8
512KB	(8) 64K x 8

Continued on next page...

CHAINTECH COMPUTER COMPANY, LTD.
586IP1

... continued from previous page

CACHE JUMPER CONFIGURATION		
Size	JP15	JP16
None	pins 1 & 2 closed	pins 1 & 2 closed
256KB	pins 1 & 2 closed	pins 2 & 3 closed
512KB	pins 2 & 3 closed	pins 2 & 3 closed

IDE SPEED CONFIGURATION		
Speed	JP22	JP23
600ns	pins 1 & 2 closed	pins 1 & 2 closed
383ns	pins 2 & 3 closed	pins 1 & 2 closed
240ns	pins 1 & 2 closed	pins 2 & 3 closed

IDE CONFIGURATION 1	
Setting	JP25
Enabled	pins 1 & 2 closed
Disabled	pins 2 & 3 closed

IDE CONFIGURATION 2	
Setting	JP26
Enabled	pins 1 & 2 closed
Disabled	pins 2 & 3 closed

CPU SPEED CONFIGURATION			
Speed	JP12	JP13	JP14
60MHz	pins 2 & 3 closed	pins 1 & 2 closed	pins 2 & 3 closed
66MHz	pins 1 & 2 closed	pins 2 & 3 closed	pins 1 & 2 closed

PCI IRQ CONFIGURATION (INT A)	
IRQ	JP6
IRQ 5	pins 11 & 12 closed
IRQ 9	pins 9 & 10 closed
IRQ 10	pins 7 & 8 closed
IRQ 11	pins 5 & 6 closed
IRQ 14	pins 3 & 4 closed
IRQ 15	pins 1 & 2 closed

PCI IRQ CONFIGURATION (INT B)	
IRQ	JP5
IRQ 5	pins 11 & 12 closed
IRQ 9	pins 9 & 10 closed
IRQ 10	pins 7 & 8 closed
IRQ 11	pins 5 & 6 closed
IRQ 14	pins 3 & 4 closed
IRQ 15	pins 1 & 2 closed

Continued on next page...

CHAINTECH COMPUTER COMPANY, LTD.

586IP1

... continued from previous page

PCI IRQ CONFIGURATION (INT C)	
IRQ	JP4
IRQ 5	pins 11 & 12 closed
IRQ 9	pins 9 & 10 closed
IRQ 10	pins 7 & 8 closed
IRQ 11	pins 5 & 6 closed
IRQ 14	pins 3 & 4 closed
IRQ 15	pins 1 & 2 closed

PCI IRQ CONFIGURATION (INT D)	
IRQ	JP3
IRQ 5	pins 11 & 12 closed
IRQ 9	pins 9 & 10 closed
IRQ 10	pins 7 & 8 closed
IRQ 11	pins 5 & 6 closed
IRQ 14	pins 3 & 4 closed
IRQ 15	pins 1 & 2 closed