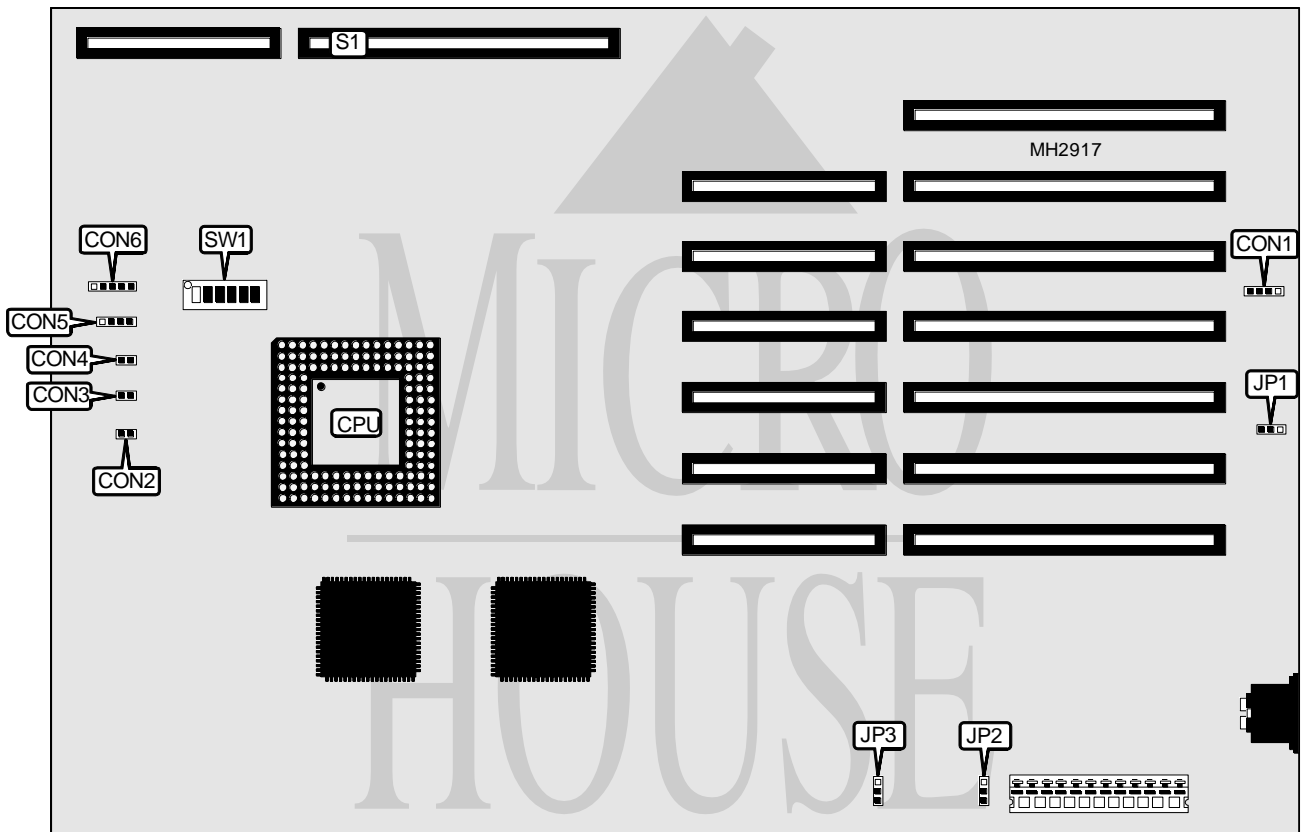


UNIDENTIFIED 486/25 MAINBOARD

Processor	80486SX
Processor Speed	25MHz
Chip Set	Unidentified
Max. Onboard DRAM	None (8MB or 16MB on riser card)
Cache	None (8KB is on the CPU)
BIOS	Award
Dimensions	330mm x 225mm
I/O Options	None
NPU Options	80387DX



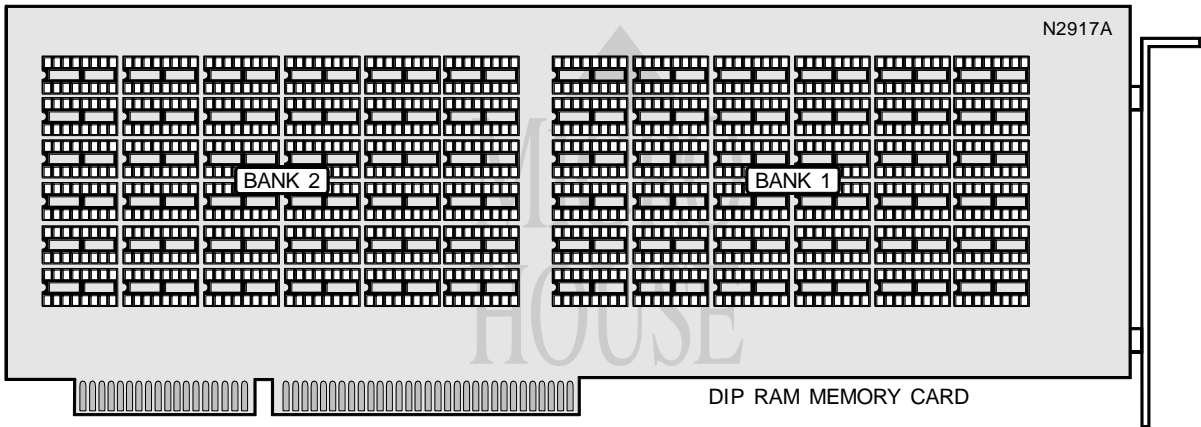
CONNECTIONS				
Purpose	Location	Purpose	Location	
External battery	CON1	Speaker	CON5	
Turbo LED	CON2	Power LED & keylock	CON6	
Turbo switch	CON3	Riser Card	S1	
Reset switch	CON4			

Continued on next page. . .

UNIDENTIFIED 486/25 MAINBOARD

... continued from previous page

USER CONFIGURABLE SETTINGS		
Function	Jumper/Switch	Position
í Battery type select external	JP1	pins 2 & 3 closed
Battery type select internal	JP1	pins 1 & 2 closed
í Monitor type select monochrome	JP2	pins 2 & 3 closed
Monitor type select color	JP2	pins 1 & 2 closed
í Power good from mainboard	JP3	pins 2 & 3 closed
Power good from power supply	JP3	pins 1 & 2 closed



DRAM CONFIGURATION		
Size	Bank 1	Bank 2
1MB	(36) 41256	NONE
2MB	(36) 41256	(1) 41256
4MB	(36) 41000	NONE
8MB	(36) 41000	(36) 41000

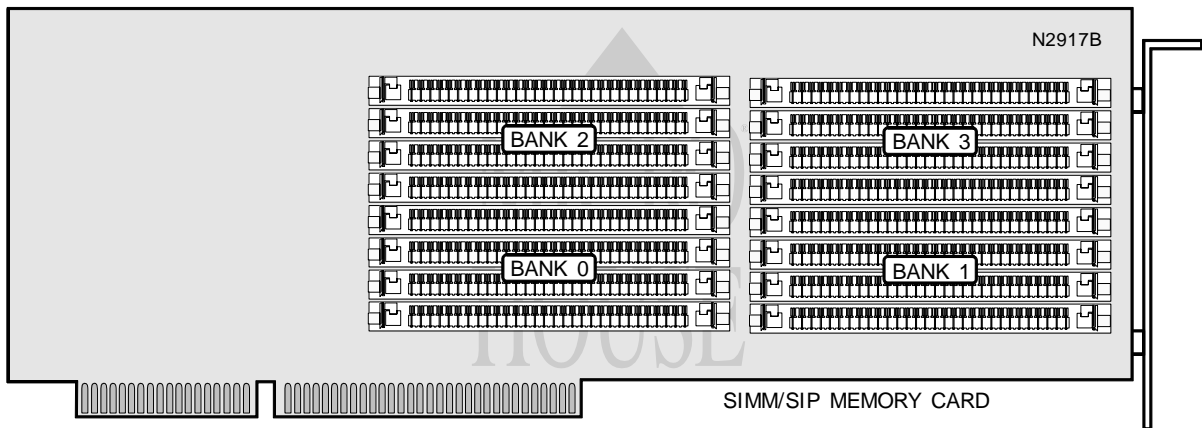
MEMORY CARD CONFIGURATION						
Select	SW1/1	SW1/2	SW1/3	SW1/4	SW1/5	SW1/6
1MB	On	On	On	On	On	On
2MB	Off	On	On	On	On	Off
4MB	Off	Off	On	On	Off	On
8MB	Off	Off	Off	On	Off	Off

Note: SW1 is located on the mainboard.

Continued on next page...

UNIDENTIFIED 486/25 MAINBOARD

... continued from previous page



DRAM CONFIGURATION

Size	Bank 0	Bank 1	Bank 2	Bank 3
1MB	(4) 256K x 9	NONE	NONE	NONE
2MB	(4) 256K x 9	(4) 256K x 9	NONE	NONE
4MB	(4) 256K x 9	(4) 256K x 9	(4) 256K x 9	(4) 256K x 9
4MB	(4) 1M x 9	NONE	NONE	NONE
8MB	(4) 1M x 9	(4) 1M x 9	NONE	NONE
16MB	(4) 1M x 9	(4) 1M x 9	(4) 1M x 9	(4) 1M x 9

Note: This may be SIMM or SIP

MEMORY CARD CONFIGURATION

Select	SW1/1	SW1/2	SW1/3	SW1/4	SW1/5	SW1/6
1MB	On	On	On	On	On	On
2MB	Off	On	On	On	On	Off
4MB	Off	Off	On	On	On	Off
4MB	Off	Off	On	On	Off	On
8MB	Off	Off	Off	On	Off	Off
16MB	Off	Off	Off	Off	Off	Off

Note: SW1 is located on the mainboard.