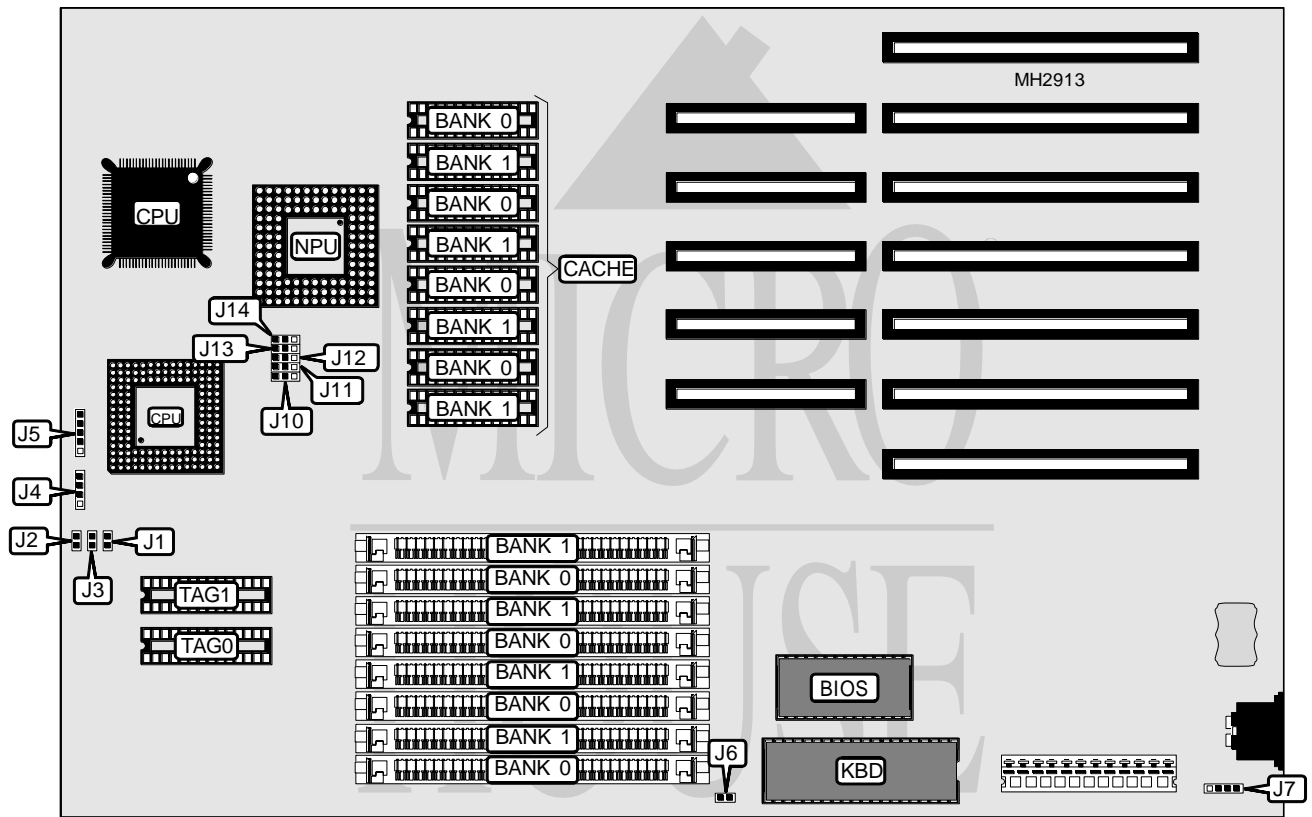


CHAINTECH COMPUTER COMPANY, LTD.

325SCD/333SCD/340SCD

Processor	AM386DX/AM386DXL/80386DX
Processor Speed	25/33/40MHz
Chip Set	Unidentified
Max. Onboard DRAM	32MB
Cache	32/64/128/256KB
BIOS	AMI
Dimensions	330mm x 218mm
I/O Options	None
NPU Options	80387DX/3167



CONNECTIONS			
Purpose	Location	Purpose	Location
Reset switch	J1	Speaker	J4
Turbo switch	J2	Power LED & keylock	J5
Turbo LED	J3	External battery	J7

Continued on next page. . .

CHAINTECH COMPUTER COMPANY, LTD.
325SCD/333SCD/340SCD

... continued from previous page

USER CONFIGURABLE SETTINGS		
Function	Jumper	Position
í Monitor type select color	J6	Closed
Monitor type select monochrome	J6	Open
í NPU synchronous with CPU	J14	pins 1 & 2 closed
NPU asynchronous with CPU	J14	pins 2 & 3 closed

DRAM CONFIGURATION		
Size	Bank 0	Bank 1
1MB	(4) 256K x 9	NONE
2MB	(4) 256K x 9	(4) 256K x 9
4MB	(4) 1M x 9	NONE
5MB	(4) 256K x 9	(4) 1M x 9
8MB	(4) 1M x 9	(4) 1M x 9
16MB	(4) 4M x 9	NONE
20MB	(4) 1M x 9	(4) 4M x 9
32MB	(4) 4M x 9	(4) 4M x 9

CACHE CONFIGURATION				
Size	Bank 0	Bank 1	TAG0	TAG1
32KB	(4) 8K x 8	NONE	(1) 8K x 8	NONE
64KB	(4) 8K x 8	(4) 8K x 8	(1) 8K x 8	(1) 8K x 8
128KB	(4) 32K x 8	NONE	(1) 32K x 8	NONE
256KB	(4) 32K x 8	(4) 32K x 8	(1) 32K x 8	(1) 32K x 8

CACHE JUMPER CONFIGURATION				
Size	J10	J11	J12	J13
32KB	pins 1 & 2 closed	pins 1 & 2 closed	pins 1 & 2 closed	pins 1 & 2 closed
64KB	pins 1 & 2 closed	pins 2 & 3 closed	pins 1 & 2 closed	pins 2 & 3 closed
128KB	pins 1 & 2 closed	pins 2 & 3 closed	pins 1 & 2 closed	pins 2 & 3 closed
256KB	pins 2 & 3 closed	pins 2 & 3 closed	pins 2 & 3 closed	pins 2 & 3 closed