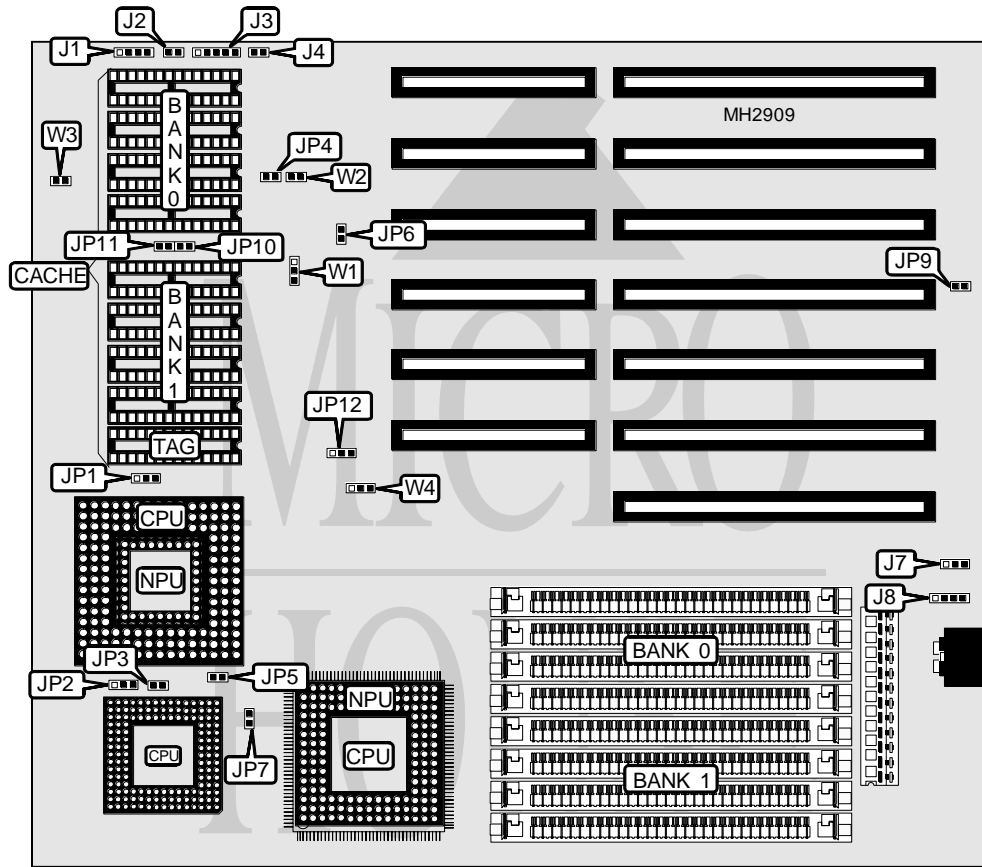


# DIAMOND FLOWER, INC. 3486-UCF REV. C

**Processor** 80386DX/80486SX/80487SX/80486DX/80486DX2/Pentium Overdrive  
**Processor Speed** 20/25/33/40/50(internal)/50/66(internal)MHz  
**Chip Set** UMC  
**Max. Onboard DRAM** 32MB  
**Cache** 64/128/256KB  
**BIOS** AMI  
**Dimensions** 254mm x 218mm  
**I/O Options** None  
**NPU Options** 80387DX/CX487DLC



CONNECTIONS			
Purpose	Location	Purpose	Location
Speaker	J1	Turbo LED	J4
Reset switch	J2	External battery	J8
Power LED & keylock	J3		

Continued on next page. . .

**DIAMOND FLOWER, INC.**  
**3486-UCF REV. C**

... continued from previous page

USER CONFIGURABLE SETTINGS		
Function	Jumper	Position
í CMOS memory normal operation	J7	pins 2 & 3 closed
CMOS memory clear	J7	pins 1 & 2 closed
í 80486SX-20 not installed	JP4	Open
80486SX-20 installed	JP4	Closed
í Monitor type select color	JP9	Closed
Monitor type select monochrome	JP9	Open
í 80486DX not installed	JP10	Open
80486DX installed	JP10	Closed
í Pentium Overdrive not installed	JP11	Open
Pentium Overdrive installed	JP11	Closed
í Intel 80386DX-33 or CX486DLC-40 not installed	JP12	pins 2 & 3 closed
Intel 80386DX-33 or CX486DLC-40 installed	JP12	pins 1 & 2 closed

DRAM CONFIGURATION		
Size	Bank 0	Bank 1
1MB	(4) 256K x 9	NONE
2MB	(4) 256K x 9	(4) 256K x 9
4MB	(4) 1M x 9	NONE
5MB	(4) 256K x 9	(4) 1M x 9
8MB	(4) 1M x 9	(4) 1M x 9
16MB	(4) 4M x 9	NONE
20MB	(4) 1M x 9	(4) 4M x 9
32MB	(4) 4M x 9	(4) 4M x 9

CACHE CONFIGURATION			
Size	Bank 0	Bank 1	TAG
64KB	(4) 8K x 8	(4) 8K x 8	(1) 8K x 8
128KB	(4) 32K x 8	NONE	(1) 8K x 8
256KB	(4) 32K x 8	(4) 32K x 8	(1) 32K x 8

CACHE JUMPER CONFIGURATION				
Size	W1	W2	W3	W4
64KB	pins 2 & 3 closed	Open	Open	pins 1 & 2 closed
128KB	pins 1 & 2 closed	Open	Closed	pins 2 & 3 closed
256KB	pins 2 & 3 closed	Closed	Closed	pins 2 & 3 closed

CPU TYPE CONFIGURATION	
Type	JP6
80386	Open
80486	Closed

Continued on next page. ...

DIAMOND FLOWER, INC.  
3486-UCF REV. C

... continued from previous page

CPU TYPE CONFIGURATION (80486 ONLY)			
Type	JP1	JP2	JP3
80486SX	Open	pins 2 & 3 closed	Open
80487SX	pins 2 & 3 closed	pins 1 & 2 closed	Closed
80486DX	pins 1 & 2 closed	pins 1 & 2 closed	Closed
80486DX2	pins 1 & 2 closed	pins 1 & 2 closed	Closed

NPU CONFIGURATION (80387)		
Setting	JP5	JP7
Disabled	Open	Open
Enabled	Closed	Closed