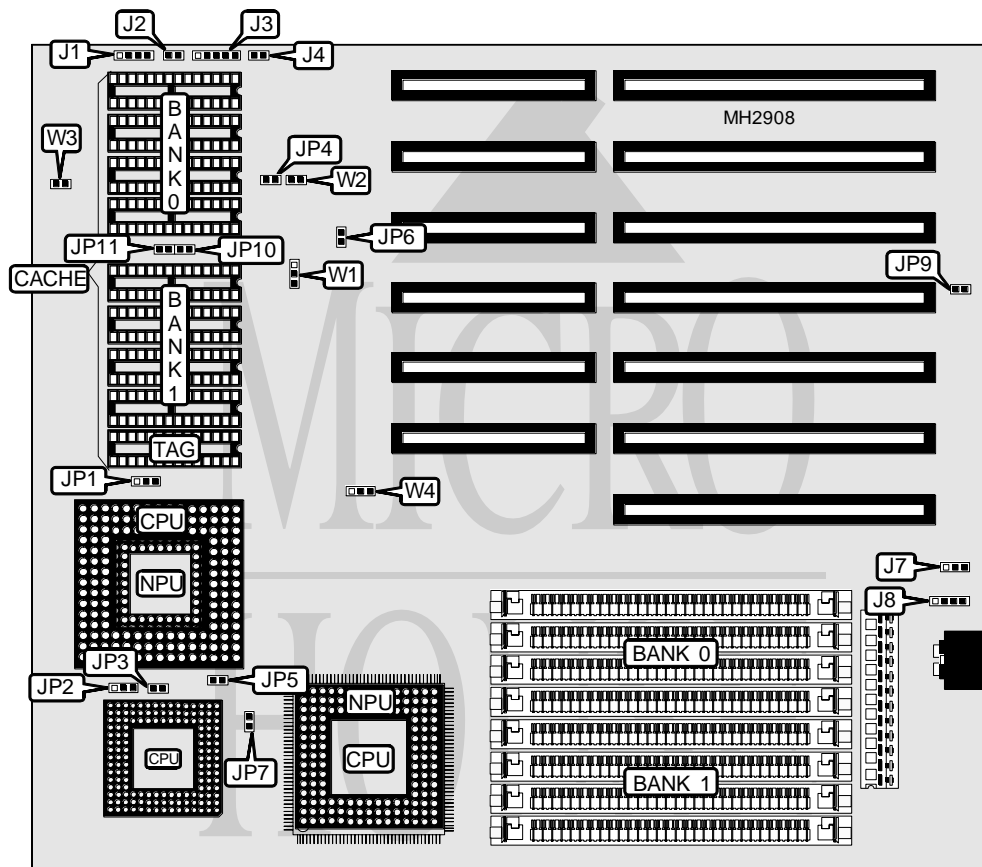


DIAMOND FLOWER, INC.

3486-UCF, 3486-UCF/Q

Processor 80386DX/80486SX/80487SX/80486DX/80486DX2/Pentium Overdrive
Processor Speed 20/25/33/40/50(internal)/50/66(internal)MHz
Chip Set UMC
Max. Onboard DRAM 32MB
Cache 64/128/256KB
BIOS AMI
Dimensions 254mm x 218mm
I/O Options None
NPU Options 80387DX/CX487DLC



| CONNECTIONS | | | |
|---------------------|----------|------------------|----------|
| Purpose | Location | Purpose | Location |
| Speaker | J1 | Turbo LED | J4 |
| Reset switch | J2 | External battery | J8 |
| Power LED & keylock | J3 | | |

Continued on next page. . .

DIAMOND FLOWER, INC.

3486-UCF, 3486-UCF/Q

... continued from previous page

| USER CONFIGURABLE SETTINGS | | |
|-----------------------------------|--------|-------------------|
| Function | Jumper | Position |
| í CMOS memory normal operation | J7 | pins 2 & 3 closed |
| CMOS memory clear | J7 | pins 1 & 2 closed |
| í 80486SX-20 not installed | JP4 | Open |
| 80486SX-20 installed | JP4 | Closed |
| í Monitor type select color | JP9 | Closed |
| Monitor type select monochrome | JP9 | Open |
| í 80486DX not installed | JP10 | Open |
| 80486DX installed | JP10 | Closed |
| í Pentium Overdrive not installed | JP11 | Open |
| Pentium Overdrive installed | JP11 | Closed |

| DRAM CONFIGURATION | | |
|--------------------|--------------|--------------|
| Size | Bank 0 | Bank 1 |
| 1MB | (4) 256K x 9 | NONE |
| 2MB | (4) 256K x 9 | (4) 256K x 9 |
| 4MB | (4) 1M x 9 | NONE |
| 5MB | (4) 256K x 9 | (4) 1M x 9 |
| 8MB | (4) 1M x 9 | (4) 1M x 9 |
| 16MB | (4) 4M x 9 | NONE |
| 20MB | (4) 1M x 9 | (4) 4M x 9 |
| 32MB | (4) 4M x 9 | (4) 4M x 9 |

| CACHE CONFIGURATION | | | |
|---------------------|-------------|-------------|-------------|
| Size | Bank 0 | Bank 1 | TAG |
| 64KB | (4) 8K x 8 | (4) 8K x 8 | (1) 8K x 8 |
| 128KB | (4) 32K x 8 | NONE | (1) 8K x 8 |
| 256KB | (4) 32K x 8 | (4) 32K x 8 | (1) 32K x 8 |

| CACHE JUMPER CONFIGURATION | | | | |
|----------------------------|-------------------|--------|--------|-------------------|
| Size | W1 | W2 | W3 | W4 |
| 64KB | pins 2 & 3 closed | Open | Open | pins 1 & 2 closed |
| 128KB | pins 1 & 2 closed | Open | Closed | pins 2 & 3 closed |
| 256KB | pins 2 & 3 closed | Closed | Closed | pins 2 & 3 closed |

| CPU TYPE CONFIGURATION | |
|------------------------|--------|
| Type | JP6 |
| 80386 | Open |
| 80486 | Closed |

Continued on next page. . .

DIAMOND FLOWER, INC.
3486-UCF, 3486-UCF/Q

... continued from previous page

| CPU TYPE CONFIGURATION (80486 ONLY) | | | |
|-------------------------------------|-------------------|-------------------|--------|
| Type | JP1 | JP2 | JP3 |
| 80486SX | Open | pins 2 & 3 closed | Open |
| 80487SX | pins 2 & 3 closed | pins 1 & 2 closed | Closed |
| 80486DX | pins 1 & 2 closed | pins 1 & 2 closed | Closed |
| 80486DX2 | pins 1 & 2 closed | pins 1 & 2 closed | Closed |

| NPU CONFIGURATION (80387) | | |
|---------------------------|--------|--------|
| Setting | JP5 | JP7 |
| Disabled | Open | Open |
| Enabled | Closed | Closed |