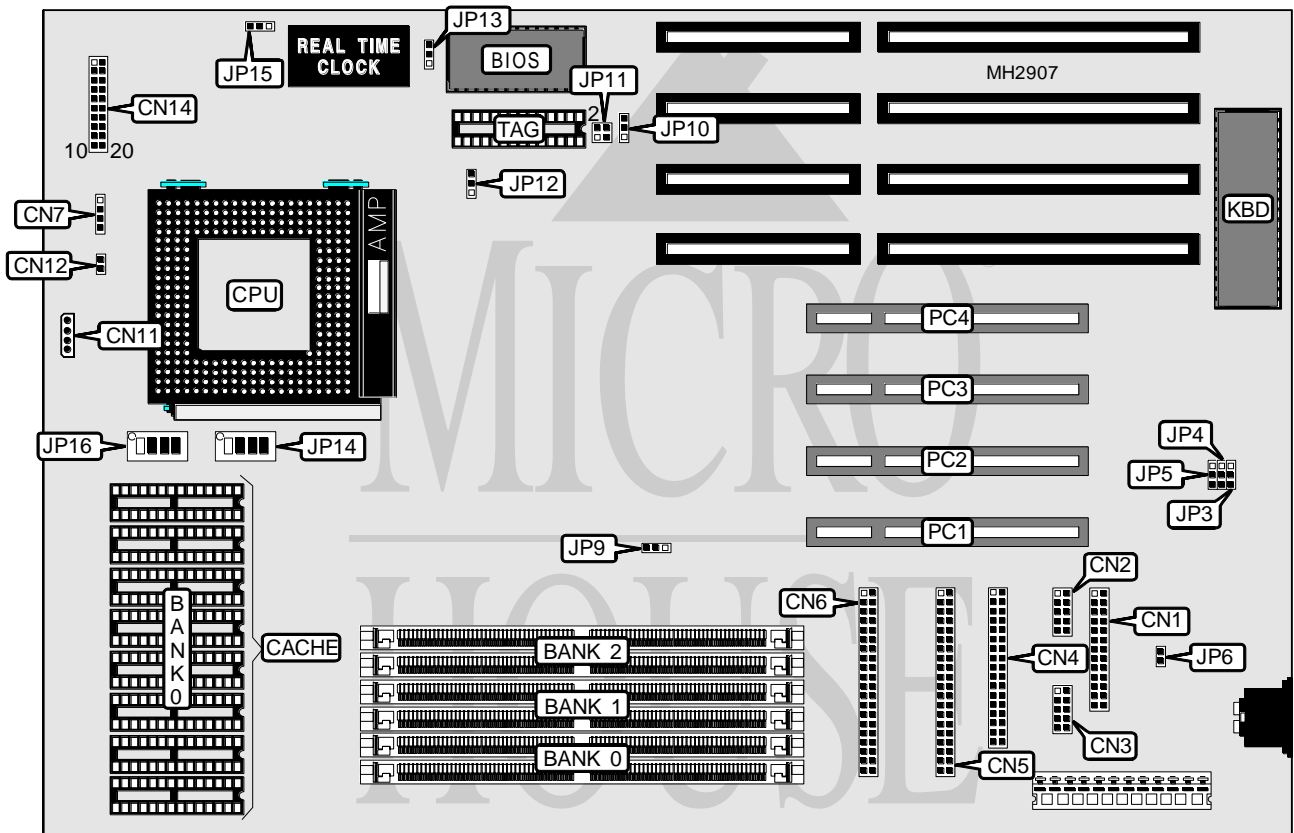


# ACER, INC. A P 5 C

<b>Processor</b>	Pentium
<b>Processor Speed</b>	75/90/100/120/133MHz
<b>Chip Set</b>	Intel
<b>Max. Onboard DRAM</b>	128MB
<b>Cache</b>	256/512KB
<b>BIOS</b>	AMI
<b>Dimensions</b>	330mm x 218mm
<b>I/O Options</b>	Parallel port, serial ports (2), 32-bit PCI slots (4), floppy drive interface, IDE interfaces (2), green PC connector
<b>NPU Options</b>	None



CONNECTIONS			
Purpose	Location	Purpose	Location
Parallel port	CN1	Chassis fan power	CN12
Serial port 1	CN2	Power LED & keylock	CN14 pins 1 - 5
Serial port 2	CN3	Speaker	CN14 pins 7 - 10
Floppy drive interface	CN4	Green PC LED	CN14 pins 12 - 13
IDE interface 2	CN5	Green PC connector	CN14 pins 15 - 17
IDE interface 1	CN6	Reset switch	CN14 pins 19- 20
IDE interface LED	CN7	32-bit PCI slots	PC1 - PC4
Chassis fan power	CN11		

Continued on next page. . .

# ACER, INC.

## A P 5 C

... continued from previous page

USER CONFIGURABLE SETTINGS		
Function	Jumper	Position
í On board I/O enabled	JP5	pins 1 & 2 closed
On board I/O disabled	JP5	pins 2 & 3 closed
í PS/2 mouse enabled (mouse is optional & may not be present)	JP6	Closed
PS/2 mouse disabled (mouse is optional & may not be present)	JP6	Open
Flash BIOS voltage select 5v	JP13	pins 1 & 2 closed
Flash BIOS voltage select 12v	JP13	pins 2 & 3 closed
í CMOS memory normal operation	JP15	pins 1 & 2 closed
CMOS memory clear	JP15	pins 2 & 3 closed

DRAM CONFIGURATION			
Size	Bank 0	Bank 1	Bank 2
8MB	(2) 1M x 36	NONE	NONE
16MB	(2) 1M x 36	(2) 1M x 36	NONE
24MB	(2) 1M x 36	(2) 1M x 36	(2) 1M x 36
32MB	(2) 2M x 36	(2) 1M x 36	(2) 1M x 36
32MB	(2) 2M x 36	(2) 2M x 36	NONE
32MB	(2) 4M x 36	NONE	NONE
40MB	(2) 2M x 36	(2) 2M x 36	(2) 1M x 36
40MB	(2) 4M x 36	(2) 1M x 36	NONE
48MB	(2) 4M x 36	(2) 1M x 36	(2) 1M x 36
48MB	(2) 4M x 36	(2) 2M x 36	NONE
56MB	(2) 4M x 36	(2) 2M x 36	(2) 1M x 36
64MB	(2) 4M x 36	(2) 4M x 36	NONE
64MB	(2) 8M x 36	NONE	NONE
72MB	(2) 8M x 36	(2) 1M x 36	NONE
80MB	(2) 8M x 36	(2) 1M x 36	(2) 1M x 36
80MB	(2) 8M x 36	(2) 2M x 36	NONE
88MB	(2) 8M x 36	(2) 2M x 36	(2) 1M x 36
96MB	(2) 8M x 36	(2) 4M x 36	NONE
104MB	(2) 8M x 36	(2) 4M x 36	(2) 1M x 36
112MB	(2) 8M x 36	(2) 2M x 36	(2) 4M x 36
128MB	(2) 8M x 36	(2) 4M x 36	(2) 4M x 36
128MB	(2) 8M x 36	(2) 8M x 36	NONE

CACHE CONFIGURATION		
Size	Bank 0	TAG
256KB	(8) 32K x 8	(1) 32K x 8
512KB	(8) 64K x 8	(1) 32K x 8

CACHE JUMPER CONFIGURATION	
Size	JP12
256KB	pins 1 & 2 closed
512KB	pins 2 & 3 closed

Continued on next page. ...

ACER, INC.  
A P 5 C

... continued from previous page

CACHE VOLTAGE JUMPER CONFIGURATION		
Type	JP14	JP16
3.3v	All Off	All On
3.3v/5v	All On	All Off

CPU SPEED CONFIGURATION			
Speed	JP9	JP10	JP11
75MHz	pins 1 & 2 closed	pins 1 & 2 closed	pins 1 & 2, 3 & 4 closed
90MHz	pins 2 & 3 closed	pins 1 & 2 closed	pins 1 & 2 closed
100MHz	pins 2 & 3 closed	pins 1 & 2 closed	pins 3 & 4 closed
120MHz	pins 2 & 3 closed	pins 2 & 3 closed	pins 1 & 2 closed
133MHz	pins 2 & 3 closed	pins 2 & 3 closed	pins 3 & 4 closed

DMA CONFIGURATION		
DMA	JP3	JP4
DMA 1	pins 2 & 3 closed	pins 2 & 3 closed
DMA 3	pins 1 & 2 closed	pins 1 & 2 closed