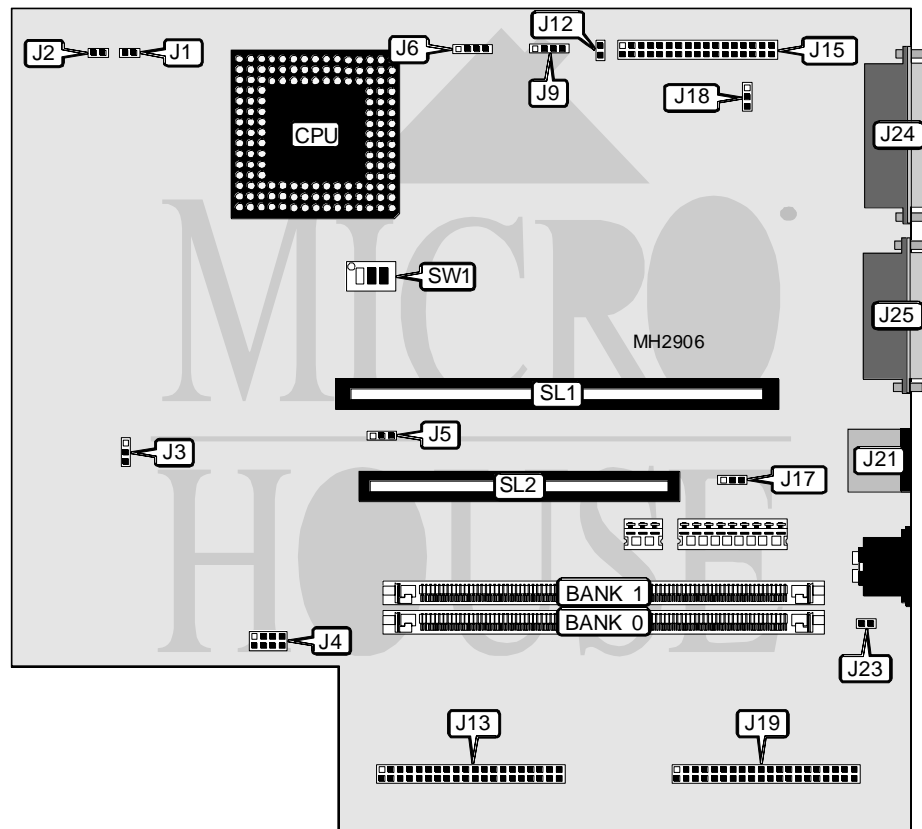


REPLY CORPORATION POWERBOARD 30-286

Processor	CX486DX2/80486DX2/80486DX4
Processor Speed	50(internal)/66(internal)/100(internal)MHz
Chip Set	Unidentified
Max. Onboard DRAM	32MB
Cache	Unidentified
BIOS	Reply
Dimensions	254mm x 218mm
I/O Options	Parallel port, serial port, floppy drive interface, IDE interface, external cache slot, riser slot, VGA interface
NPU Options	None



CONNECTIONS			
Purpose	Location	Purpose	Location
VGA interface	J4	PS/2 mouse port	J21
Drive power connector	J5	Headphone connector	J23
External battery	J6	Parallel port	J24
Hard drive power connector	J9	Serial port	J25
IDE interface	J13	Riser Card	SL1
Floppy drive interface	J15	External cache slot	SL2
ST-506/412 interface	J19		

Continued on next page. . .

REPLY CORPORATION POWERBOARD 30-286

... continued from previous page

USER CONFIGURABLE SETTINGS		
Function	Jumper	Position
í VGA IRQ enabled	J3	pins 1 & 2 closed
VGA IRQ disabled	J3	pins 2 & 3 closed
í Floppy drive interface enabled	J12	Open
Floppy drive interface disabled	J12	Closed
í IRQ5 enabled	J17	pins 1 & 2 closed
IRQ5 disabled	J17	pins 2 & 3 closed
í CMOS memory normal operation	J18	pins 1 & 2 closed
CMOS memory clear	J18	pins 2 & 3 closed

DRAM CONFIGURATION		
Size	Bank 0	Bank 1
1MB	(1) 256K x 36	NONE
2MB	(1) 256K x 36	(1) 256K x 36
3MB	(1) 256K x 36	(1) 1M x 36
4MB	(1) 1M x 36	NONE
5MB	(1) 1M x 36	(1) 256K x 36
8MB	(1) 1M x 36	(1) 1M x 36
16MB	(1) 4M x 36	NONE
17MB	(1) 256K x 36	(1) 4M x 36
17MB	(1) 4M x 36	(1) 256K x 36
20MB	(1) 1M x 36	(1) 4M x 36
20MB	(1) 4M x 36	(1) 1M x 36
32MB	(1) 4M x 36	(1) 4M x 36

CACHE CONFIGURATION

Note: Cache is installed at SL2. The size is unidentified.

CPU TYPE CONFIGURATION		
Type	J1	J2
Cyrix	Open	Closed
Intel	Closed	Open

CPU SPEED CONFIGURATION			
Speed	SW1/1	SW1/2	SW1/3
50iMHz	On	On	Off
66iMHz	Off	Off	On
100iMHz	Off	Off	On