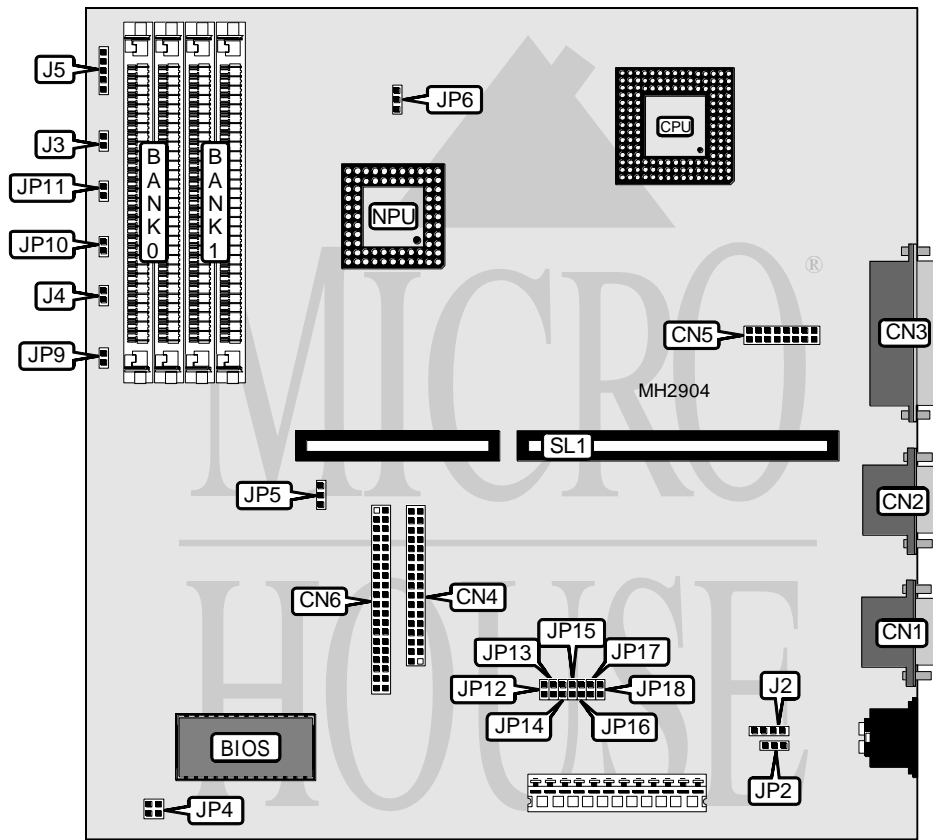


PC BRAND LEADER

Processor	80386SX
Processor Speed	25/33MHz
Chip Set	Unidentified
Max. Onboard DRAM	16MB
Cache	None
BIOS	Unidentified
Dimensions	220mm x 220mm
I/O Options	Parallel port, serial ports (2), game port, IDE interface, floppy drive interface, riser slot
NPU Options	80387SX



CONNECTIONS			
Purpose	Location	Purpose	Location
Serial port 1	CN1	IDE interface LED	J3
Serial port 2	CN2	Reset switch	J4
Parallel port	CN3	Power LED & keylock	J5
Floppy drive interface	CN4	Speaker	JP9
Game port	CN5	Turbo switch	JP10
IDE interface	CN6	Turbo LED	JP11
External battery	J2	Riser Card	SL1

Continued on next page. . .

PC BRAND LEADER

... continued from previous page

USER CONFIGURABLE SETTINGS		
Function	Jumper	Position
í Battery type select internal	JP2	pins 1 & 2 closed
Battery type select external	JP2	pins 2 & 3 closed
í CMOS memory normal operation	JP4	pins 1 & 2 closed
CMOS memory clear	JP4	pins 3 & 4 closed
í Turbo enabled	JP5	pins 2 & 3 closed
Turbo disabled	JP5	pins 1 & 2 closed
í Speaker type select internal buzzer	JP9	pins 1 & 2 closed
Speaker type select external speaker	JP9	Open
í Serial port 1 enabled	JP12	Open
Serial port 1 disabled	JP12	Closed
í Serial port 2 enabled	JP13	Open
Serial port 2 disabled	JP13	Closed
í Floppy drive interface enabled	JP14	Open
Floppy drive interface disabled	JP14	Closed
í Parallel port LPT select LPT1	JP15	Open
Parallel port LPT select LPT2	JP15	Closed
í IDE interface enabled	JP16	Open
IDE interface disabled	JP16	Closed
í Game port enabled	JP17	Open
Game port disabled	JP17	Closed
í Security disabled	JP18	Open
Security enabled	JP18	Closed

DRAM CONFIGURATION		
Size	Bank 0	Bank 1
512KB	(2) 256K x 9	NONE
1MB	(2) 256K x 9	(2) 256K x 9
2MB	(2) 1M x 9	NONE
4MB	(2) 1M x 9	(2) 1M x 9
8MB	(2) 4M x 9	NONE
16MB	(2) 4M x 9	(2) 4M x 9

CPU SPEED CONFIGURATION	
Speed	JP6
25MHz	pins 2 & 3 closed
33MHz	pins 1 & 2 closed

MISCELLANEOUS TECHNICAL NOTE
 Note: The location of pin 1 is unidentified.