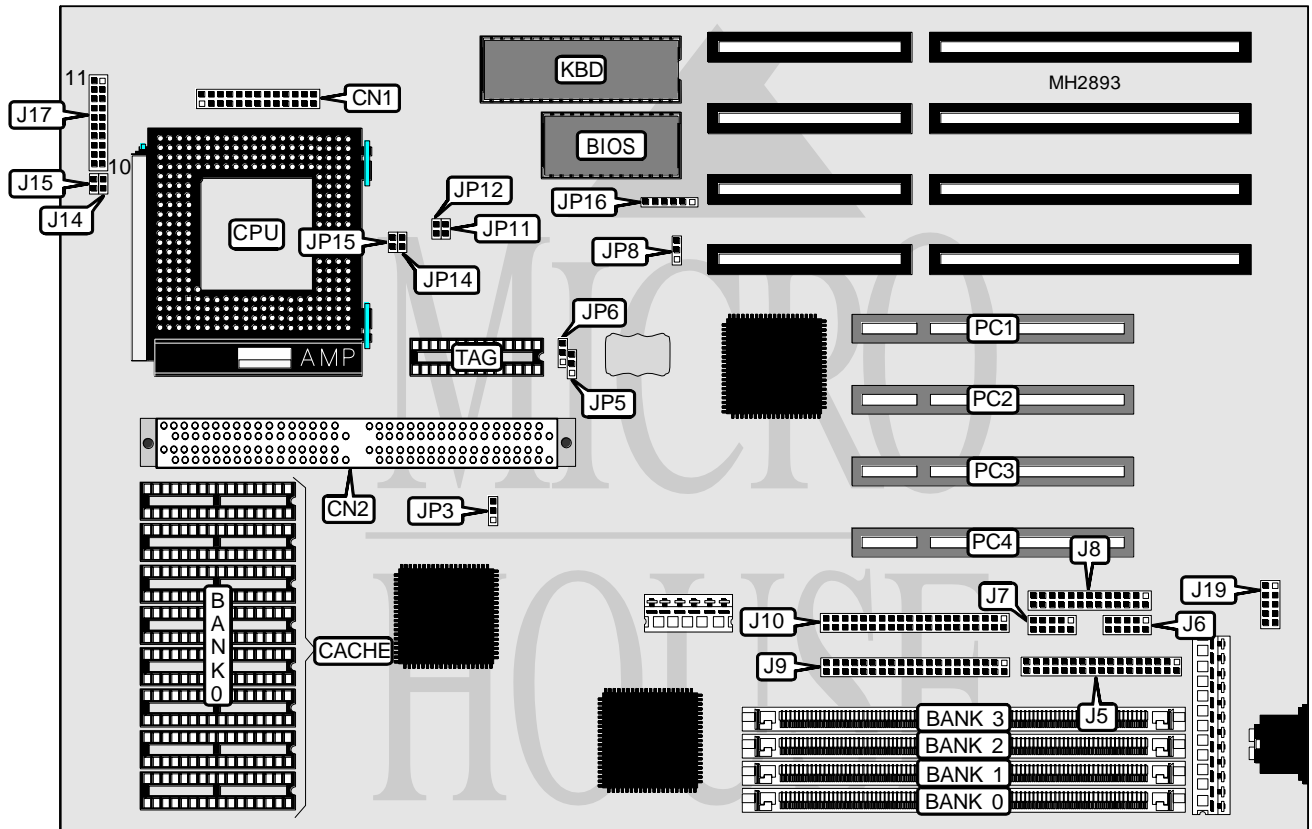


TMC RESEARCH CORPORATION PCI54ST (VER. 1.0A)

Processor	Pentium
Processor Speed	75/90/100/120/133/150/166MHz
Chip Set	SIS
Max. Onboard DRAM	128MB
Cache	256/512/1024KB
BIOS	SIS
Dimensions	330mm x 218mm
I/O Options	PS/2 mouse connector, parallel port, serial ports (2), 32-bit PCI slots (4), green PC connector, floppy drive interface, IDE interfaces (2)
NPU Options	None



CONNECTIONS			
Purpose	Location	Purpose	Location
Floppy drive interface	J5	PS/2 mouse connector	J19
Serial port 1	J6	Speaker	J17 pins 1 - 5
Serial port 2	J7	Turbo switch	J17 pins 7 & 17
Parallel port	J8	Reset switch	J17 pins 8 & 18
IDE interface 1	J9	IDE interface LED	J17 pins 10 & 20
IDE interface 2	J10	Power LED & keylock	J17 pins 11 - 15
Green PC LED	J14	32-bit PCI slots	PC1 - PC4
Green PC connector	J15		

Continued on next page. . .

TMC RESEARCH CORPORATION

PCI54ST (VER. 1.0A)

... continued from previous page

USER CONFIGURABLE SETTINGS		
Function	Jumper	Position
Factory configured - do not alter	CN1	N/A
í CMOS memory normal operation	JP8	pins 1 & 2 closed
CMOS memory clear	JP8	pins 2 & 3 closed
í Flash BIOS voltage select 12v	JP16	pins 1 & 2 closed
Flash BIOS voltage select 5v	JP16	pins 2 & 3 closed

DRAM CONFIGURATION				
Size	Bank 0	Bank 1	Bank 2	Bank 3
4MB	NONE	(1) 1M x 36	NONE	NONE
4MB	NONE	NONE	NONE	(1) 1M x 36
8MB	NONE	(1) 2M x 36	NONE	NONE
8MB	NONE	NONE	NONE	(1) 2M x 36
8MB	(1) 1M x 36	(1) 1M x 36	NONE	NONE
8MB	NONE	NONE	(1) 1M x 36	(1) 1M x 36
16MB	NONE	(1) 4M x 36	NONE	NONE
16MB	NONE	NONE	NONE	(1) 4M x 36
16MB	(1) 2M x 36	(1) 2M x 36	NONE	NONE
16MB	NONE	NONE	(1) 2M x 36	(1) 2M x 36
16MB	(1) 1M x 36	(1) 1M x 36	(1) 1M x 36	(1) 1M x 36
24MB	(1) 2M x 36	(1) 2M x 36	(1) 1M x 36	(1) 1M x 36
24MB	(1) 1M x 36	(1) 1M x 36	(1) 2M x 36	(1) 2M x 36
32MB	NONE	(1) 8M x 36	NONE	NONE
32MB	NONE	NONE	NONE	(1) 8M x 36
32MB	(1) 4M x 36	(1) 4M x 36	NONE	NONE
32MB	NONE	NONE	(1) 4M x 36	(1) 4M x 36
32MB	(1) 2M x 36	(1) 2M x 36	(1) 2M x 36	(1) 2M x 36
40MB	(1) 1M x 36	(1) 1M x 36	(1) 4M x 36	(1) 4M x 36
40MB	(1) 4M x 36	(1) 4M x 36	(1) 1M x 36	(1) 1M x 36
48MB	(1) 4M x 36	NONE	(1) 4M x 36	(1) 4M x 36
48MB	(1) 4M x 36	(1) 4M x 36	(1) 4M x 36	NONE
64MB	NONE	NONE	(1) 8M x 36	(1) 8M x 36
64MB	(1) 8M x 36	(1) 8M x 36	NONE	NONE
64MB	(1) 4M x 36	(1) 4M x 36	(1) 4M x 36	(1) 4M x 36
72MB	(1) 1M x 36	(1) 1M x 36	(1) 8M x 36	(1) 8M x 36
72MB	(1) 8M x 36	(1) 8M x 36	(1) 1M x 36	(1) 1M x 36
80MB	(1) 2M x 36	(1) 2M x 36	(1) 8M x 36	(1) 8M x 36
80MB	(1) 8M x 36	(1) 8M x 36	(1) 2M x 36	(1) 2M x 36
96MB	(1) 4M x 36	(1) 4M x 36	(1) 8M x 36	(1) 8M x 36
96MB	(1) 8M x 36	(1) 8M x 36	(1) 4M x 36	(1) 4M x 36
128MB	(1) 8M x 36	(1) 8M x 36	(1) 8M x 36	(1) 8M x 36

Continued on next page. ...

TMC RESEARCH CORPORATION

PCI54ST (VER. 1.0A)

... continued from previous page

CACHE CONFIGURATION		
Size	Bank 0	TAG
256KB	(8) 32K x 8	(1) 8K x 8
512KB	(8) 64K x 8	(1) 16K x 8
1MB	(8) 128K x 8	(1) 32K x 8

CACHE JUMPER CONFIGURATION		
Size	JP5	JP6
256KB	JP5 pin 2 & JP6 pin 1 closed	pins 2 & 3 closed
512KB	pins 2 & 3 closed	pins 1 & 2 closed
1MB	pins 1 & 2 closed	JP5 pin 3 & JP6 pin 2 closed

CACHE CONFIGURATION (CACHE MODULE)
Note: Cache modules are available in either 256KB or 512KB. If one is installed at CN2, cache chips in Bank 0 must be removed.

CACHE JUMPER CONFIGURATION (CACHE MODULE)	
Type	JP3
Asynchronous	pins 1 & 2 closed
Synchronous (burst/pipe burst)	pins 2 & 3 closed

CPU SPEED CONFIGURATION		
Speed	JP14	JP15
75MHz	Open	Open
90MHz	Open	Open
100MHz	Open	Open
120MHz	Open	Closed
133MHz	Open	Closed
150MHz	Closed	Closed
160MHz	Closed	Closed

CPU CLOCK SPEED CONFIGURATION		
Speed	JP11	JP12
50MHz	Open	Open
60MHz	Open	Closed
66MHz	Closed	Closed