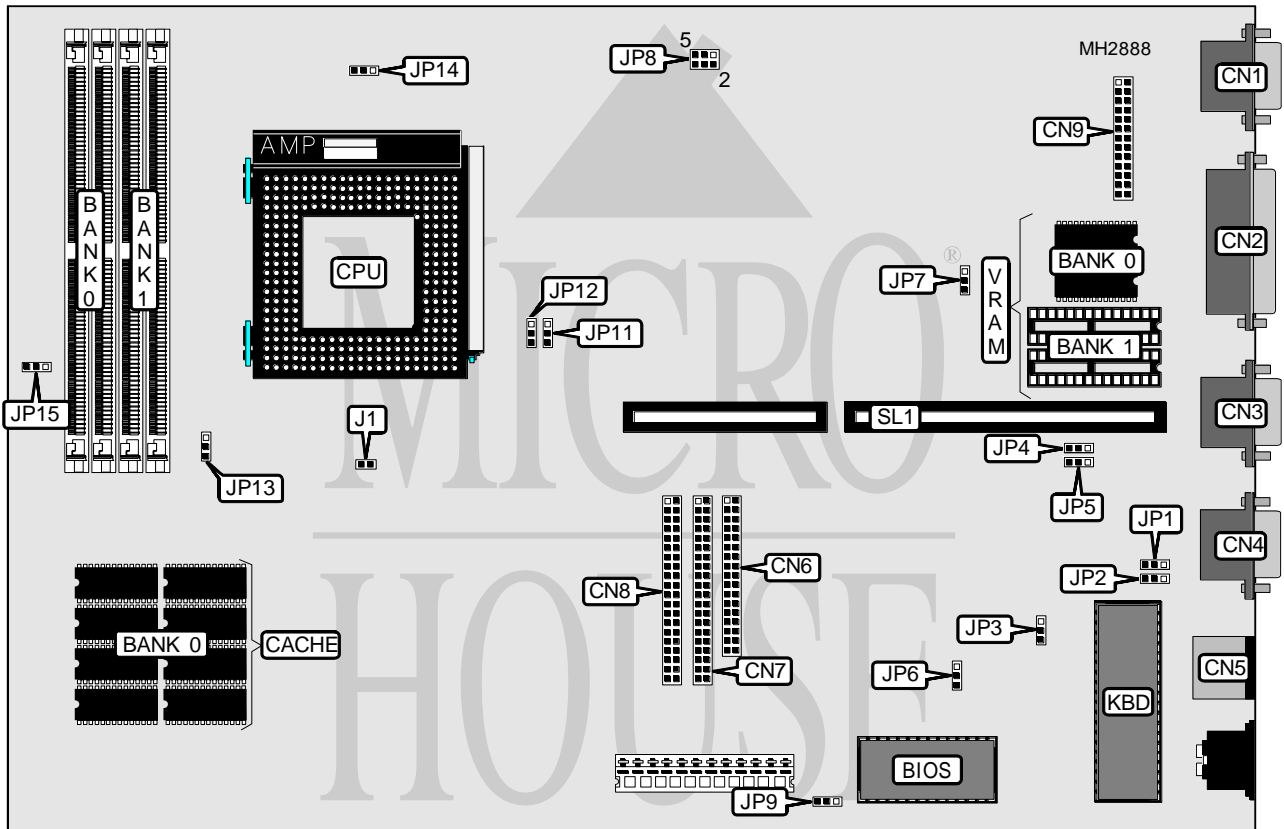


ICL INDIANA D-SERIES

Processor	Pentium
Processor Speed	75/90/100MHz
Chip Set	ALI
Max. Onboard DRAM	64MB
Cache	256KB
BIOS	Acer
Dimensions	432mm x 368mm
I/O Options	PS/2 mouse port, parallel port, serial ports (2), VGA port, VGA feature connector, floppy drive interface, IDE interfaces (2), riser slot
NPU Options	None



CONNECTIONS			
Purpose	Location	Purpose	Location
VGA port	CN1	IDE interface 1	CN7
Parallel port	CN2	IDE interface 2	CN8
Serial port 1	CN3	VGA feature connector	CN9
Serial port 2	CN4	Chassis fan power	J1
PS/2 mouse port	CN5	Riser Card	SL1
Floppy drive interface	CN6		

Continued on next page. . .

ICL INDIANA D-SERIES

... continued from previous page

USER CONFIGURABLE SETTINGS		
Function	Jumper	Position
í BIOS type select Acer BIOS	JP1	pins 1 & 2 closed
BIOS type select OEM BIOS	JP1	pins 2 & 3 closed
í Password disabled	JP2	pins 2 & 3 closed
Password enabled	JP2	pins 1 & 2 closed
í BIOS type select flash BIOS	JP3	pins 1 & 2 closed
BIOS type select EPROM	JP3	pins 2 & 3 closed
í On board I/O enabled	JP6	pins 2 & 3 closed
On board I/O disabled	JP6	pins 1 & 2 closed
í On board video enabled	JP7	pins 2 & 3 closed
On board video disabled	JP7	pins 1 & 2 closed
í IDE interface enabled	JP9	pins 1 & 2 closed
IDE interface disabled	JP9	pins 2 & 3 closed
í No delay for M1451C	JP11	pins 1 & 2 closed
Delay ADS# by 1 CPU clock	JP11	pins 2 & 3 closed
í Factory configured - do not alter	JP12	pins 1 & 2 closed
í CPU bus speed select 1.5x	JP14	pins 1 & 2 closed
CPU bus speed select 2x	JP14	pins 2 & 3 closed
í Factory configured - do not alter	JP15	N/A

DRAM CONFIGURATION		
Size	Bank 0	Bank 1
8MB	(2) 1M x 36	NONE
16MB	(2) 2M x 36	NONE
24MB	(2) 1M x 36	(2) 2M x 36
32MB	(2) 4M x 36	NONE
32MB	(2) 2M x 36	(2) 2M x 36
40MB	(2) 1M x 36	(2) 4M x 36
48MB	(2) 4M x 36	(2) 2M x 36
64MB	(2) 4M x 36	(2) 4M x 36

CACHE CONFIGURATION	
Size	Bank 0
256KB	(8) 32K x 8

Note: Cache is factory installed and is not configurable.

CPU SPEED CONFIGURATION	
Speed	JP8
75MHz	pins 1 & 2 closed
90MHz	pins 3 & 4 closed
100MHz	pins 5 & 6 closed

Continued on next page...

ICL

INDIANA D-SERIES

... continued from previous page

CPU VOLTAGE CONFIGURATION	
Voltage	JP13
3.3825v (VR CPU)	pins 1 & 2 closed
3.5250v (VRE CPU)	pins 2 & 3 closed

DMA CONFIGURATION		
DMA	JP4	JP5
DMA1	pins 2 & 3 closed	pins 2 & 3 closed
DMA3	pins 1 & 2 closed	pins 1 & 2 closed

VRAM CONFIGURATION		
Size	Bank 0	Bank 1
1MB	(2) 256K x 16	NONE
2MB	(2) 256K x 16	(2) 256K x 16