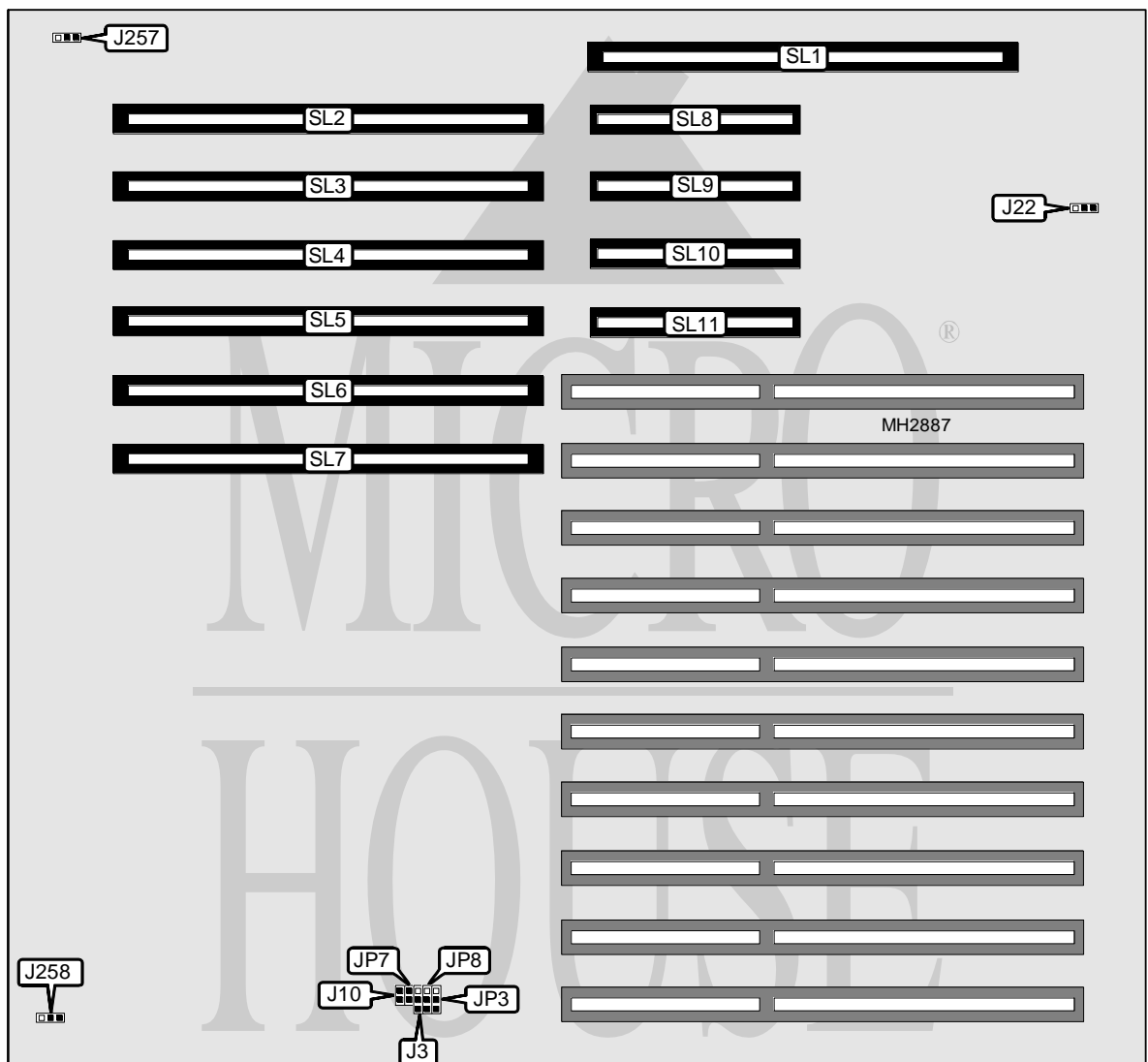


ICL M X 4 8 6

Processor	80486DX
Processor Speed	33/50MHz
Chip Set	Unidentified
Max. Onboard DRAM	64MB
Cache	Unidentified
BIOS	Unidentified
Dimensions	355mm x 305mm
I/O Options	LCD/BIOS slot, local bus slots, external memory card, external processor board, serial ports (2), parallel port, PS/2 mouse interface, floppy drive interface, IDE interface, LCD interface
NPU Options	4167



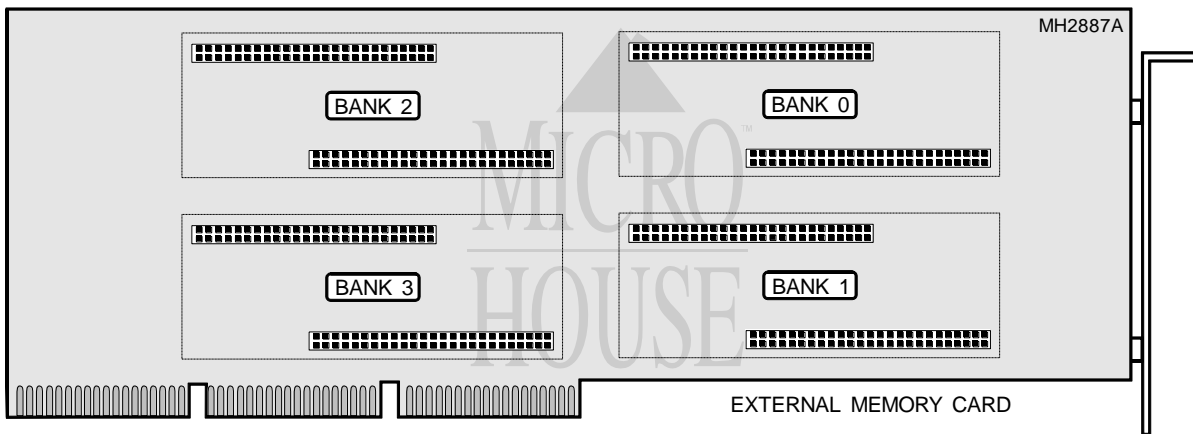
Continued on next page...

ICL MX486

... continued from previous page

CONNECTIONS			
Purpose	Location	Purpose	Location
LCD/BIOS slot	SL1	Local bus slots extension slots	SL8 - SL11
Local bus slots	SL2 - SL7		

USER CONFIGURABLE SETTINGS			
Function	Jumper	Position	
í Multiprocessing type select asymmetric	J3	pins 2 & 3 closed	
Multiprocessing type select symmetric	J3	pins 1 & 2 closed	
í CPU speed select 33MHz used	J10	Open	
CPU speed select 33MHz not used	J10	Closed	
í Temperature sensor for second 486/33 board in slot 13	J22	Open	
Temperature sensor for second 486/50 board in slot 14	J22	Closed	
í Factory configured - do not alter	J257	N/A	
í Factory configured - do not alter	J258	N/A	
í ISP INT to CPU1 unlatched	JP3	pins 1 & 2 closed	
ISP INT to CPU1 latched	JP3	pins 2 & 3 closed	
í I/O cycles long wait enabled	JP7	Closed	
I/O cycles long wait disabled	JP7	Open	
í Cache type select programmed by software	JP8	pins 1 & 2 closed	
Cache type select write back	JP8	pins 2 & 3 closed	
Cache type select write through	JP8	Open	



Continued on next page. ...

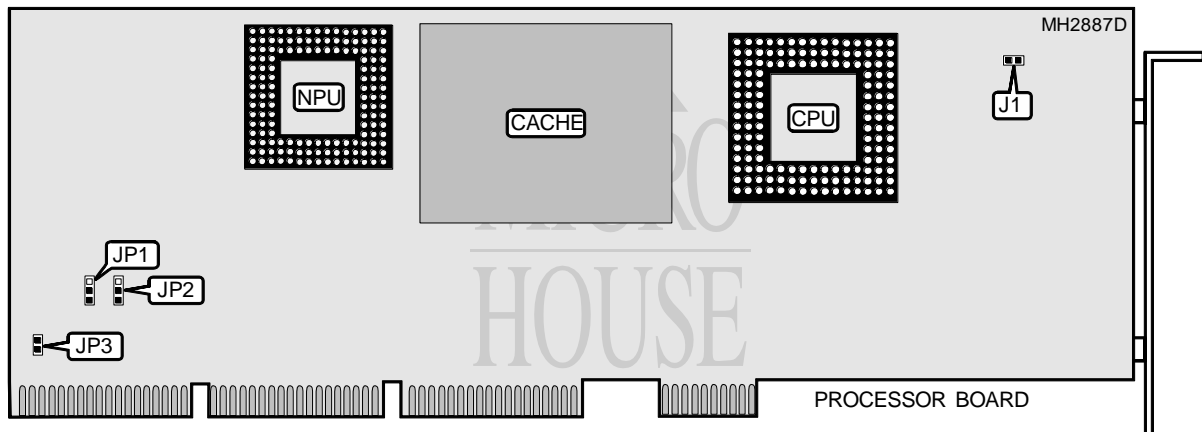
ICL

MX486

... continued from previous page

DRAM CONFIGURATION				
Size	Bank 0	Bank 1	Bank 2	Bank 3
8MB	8MB	NONE	NONE	NONE
12MB	8MB	4MB	NONE	NONE
16MB	8MB	4MB	4MB	NONE
16MB	8MB	8MB	NONE	NONE
16MB	16MB	NONE	NONE	NONE
24MB	8MB	4MB	4MB	8MB
24MB	8MB	8MB	8MB	NONE
24MB	8MB	16MB	NONE	NONE
32MB	8MB	8MB	8MB	8MB
32MB	16MB	16MB	NONE	NONE
40MB	8MB	16MB	16MB	NONE
48MB	16MB	16MB	16MB	NONE
56MB	8MB	16MB	16MB	16MB
64MB	16MB	16MB	16MB	16MB

Note: Memory is installed by using ICL modules.



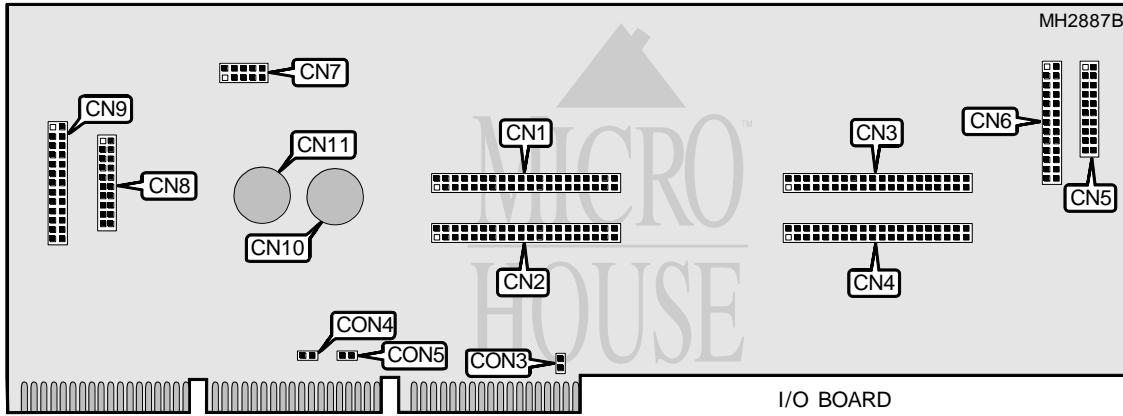
USER CONFIGURABLE SETTINGS		
Function	Jumper	Position
í Factory configured - do not alter	J1	N/A
í Factory configured - do not alter	JP1	pins 2 & 3 closed
í Factory configured - do not alter	JP2	pins 1 & 2 closed
í Factory configured - do not alter	JP3	Closed

CACHE CONFIGURATION
Note: The size and configuration of the cache is unidentified.

Continued on next page...

ICL MX486

... continued from previous page



CONNECTIONS			
Purpose	Location	Purpose	Location
System board connector	CN1	Serial port 1	CN7
System board connector	CN2	Serial port 2	CN8
System board connector	CN3	Parallel port	CN9
System board connector	CN4	PS/2 mouse connector	CN10
Chassis fan power	CN5	Keyboard connector	CN11
Chassis fan power	CN6		

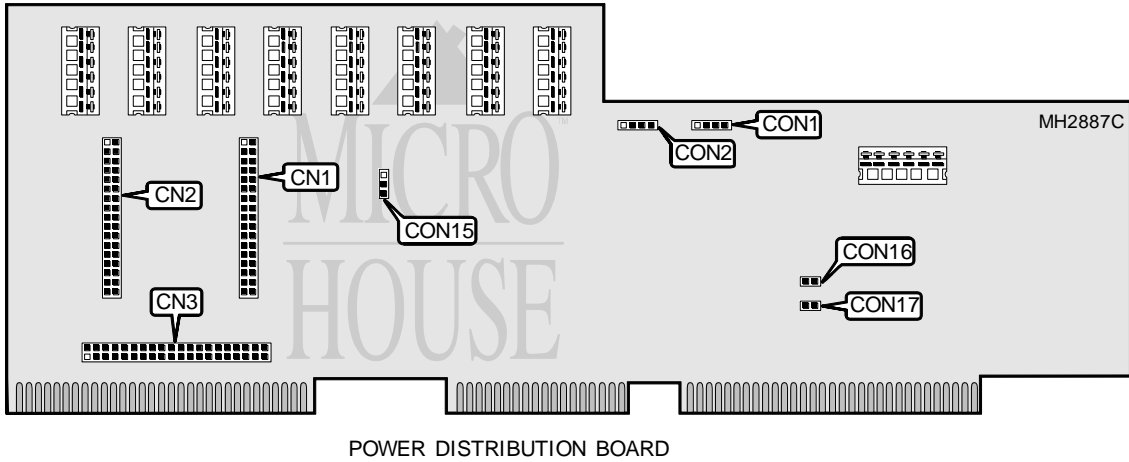
Note: Jumper sizes may not be exact. They are shown for location purposes only.

USER CONFIGURABLE SETTINGS			
Function	Jumper	Position	
í IRQ select IRQ7	CON3	pins 2 & 3 closed	
IRQ select IRQ5	CON3	pins 1 & 2 closed	
í Motor drive spindle speed select single speed	CON4	Open	
Motor drive spindle speed select double speed	CON4	Closed	
í Pre-compensation mode select normal	CON5	Closed	
Pre-compensation mode select alternate	CON5	Open	

Continued on next page. ...

ICL
MX486

... continued from previous page



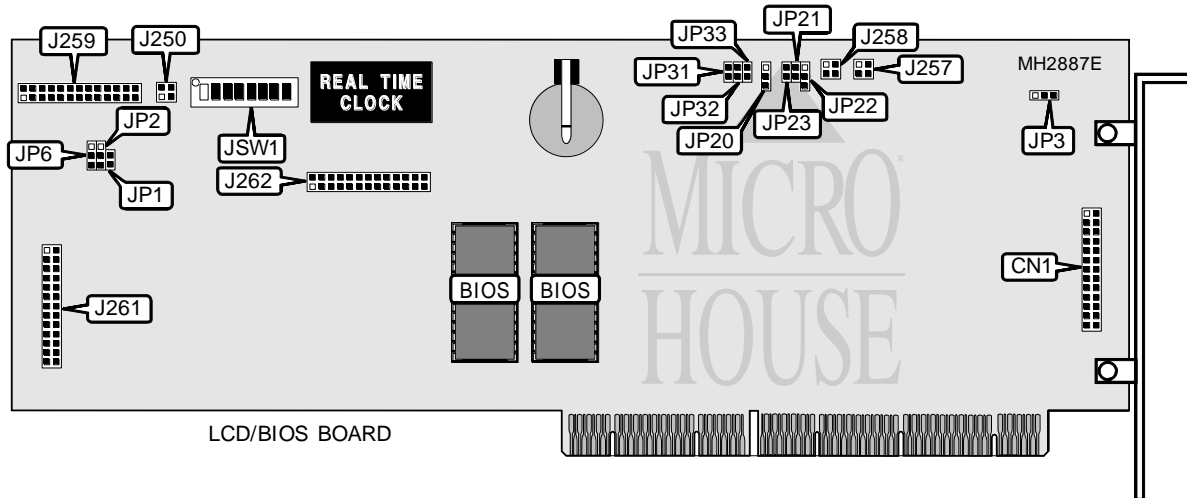
CONNECTIONS			
Purpose	Location	Purpose	Location
Temperature sensor interface	CON1	Floppy drive interface	CN2
Chassis fan power	CON2	IDE interface	CN3
Floppy drive interface	CN1		

USER CONFIGURABLE SETTINGS			
Function	Jumper	Position	
í Floppy drives write protect disabled	CON15	pins 1 & 2 closed	
Floppy drives write protect enabled	CON15	pins 2 & 3 closed	
í Factory configured - do not alter	CON16	N/A	
í Factory configured - do not alter	CON17	N/A	

Continued on next page. . .

ICL MX486

... continued from previous page



LCD/BIOS BOARD

CONNECTIONS

Purpose	Location
LCD interface	CN1

USER CONFIGURABLE SETTINGS

Function	Jumper	Position
í Factory configured - do not alter	JP1	Closed
í INT 2 asymmetric	JP2	pins 2 & 3 closed
INT 2 symmetric	JP2	pins 1 & 2 closed
í Safe operation enabled	JP3	pins 2 & 3 closed
Micro-switch override	JP3	pins 1 & 2 closed
í INT ACK 2 asymmetric	JP6	pins 2 & 3 closed
INT ACK 2 symmetric	JP6	pins 1 & 2 closed
í Keyboard/mouse lock set by key	JP20	pins 1 & 2 closed
Keyboard/mouse enabled	JP20	pins 2 & 3 closed
Keyboard/mouse locked	JP20	Open
í I/O CHK# disabled	JP21	Open
/O CHK# enabled	JP21	Closed
í 3-mode diskette primary address enabled	JP22	pins 1 & 2 closed
3-mode diskette secondary address enabled	JP22	pins 2 & 3 closed
í VCCAUX 5v auxiliary enabled	JP23	Open
VCCAUX 5v auxiliary disabled	JP23	Closed
í DCM COM port access, lower 64KB memory installed	JP34	pins 2 & 3 closed
DCM COM port access, upper 64KB memory installed	JP34	pins 1 & 2 closed
í Factory configured - do not alter	J250	N/A
í Factory configured - do not alter	J257	N/A
í Factory configured - do not alter	J258	N/A
í Factory configured - do not alter	J259	N/A

Continued on next page...

ICL

MX486

... continued from previous page

USER CONFIGURABLE SETTINGS (CON'T)		
Function	Jumper	Position
í Factory configured - do not alter	J261	N/A
í Factory configured - do not alter	J262	N/A
í Factory configured - do not alter	JSW1/1	N/A
í Factory configured - do not alter	JSW1/2	N/A
í Factory configured - do not alter	JSW1/3	N/A
í Factory configured - do not alter	JSW1/4	N/A
í Factory configured - do not alter	JSW1/5	N/A
í RAM test enabled	JSW1/6	Off
RAM test disabled	JSW1/6	On
í COM port speed set by ECU	JSW1/7	Off
COM1 = 9600, n, 8, 1 & COM2 = 2400, n, 8, 1	JSW1/7	On
í Password disabled	JSW1/8	On
Password enabled	JSW1/8	Off

Note: The location of JP34 is unidentified.

EISA MEMORY CONFIGURATION			
Setting	JP31	JP32	JP33
1C000H - 1FFFFH	pins 1 & 2 closed	pins 1 & 2 closed	pins 1 & 2 closed
18000H - 1BFFFFH	pins 2 & 3 closed	pins 1 & 2 closed	pins 1 & 2 closed
14000H - 17FFFFH	pins 1 & 2 closed	pins 2 & 3 closed	pins 1 & 2 closed
10000H - 13FFFFH	pins 2 & 3 closed	pins 2 & 3 closed	pins 1 & 2 closed
0C000H - 0FFFFH	pins 1 & 2 closed	pins 1 & 2 closed	pins 2 & 3 closed
08000H - 0BFFFFH	pins 2 & 3 closed	pins 1 & 2 closed	pins 2 & 3 closed
04000H - 07FFFFH	pins 1 & 2 closed	pins 2 & 3 closed	pins 2 & 3 closed
00000H - 03FFFFH	pins 2 & 3 closed	pins 2 & 3 closed	pins 2 & 3 closed